

KANSAS CORPORATION COMMISSION
OIL & GAS CONSERVATION DIVISION

TEMPORARY ABANDONMENT WELL APPLICATION

OPERATOR: License#
Name:
Address 1:
Address 2:
City: State: Zip:
Contact Person:
Phone:
Contact Person Email:
Field Contact Person:
Field Contact Person Phone:

API No. 15-
Spot Description:
Sec. Twp. S. R.
GPS Location: Lat: Long:
Datum: NAD27 NAD83 WGS84
County: Elevation:
Lease Name: Well #:
Well Type: Oil Gas OG WSW Other:
SWD Permit #: ENHR Permit #:
Gas Storage Permit #:
Spud Date: Date Shut-In:

Table with 7 columns: Conductor, Surface, Production, Intermediate, Liner, Tubing. Rows include Size, Setting Depth, Amount of Cement, Top of Cement, Bottom of Cement.

Casing Fluid Level from Surface: How Determined? Date:
Casing Squeeze(s): to w / sacks of cement, to w / sacks of cement. Date:
Do you have a valid Oil & Gas Lease? Yes No
Depth and Type: Junk in Hole at Tools in Hole at Casing Leaks: Yes No Depth of casing leak(s):
Type Completion: ALT. I ALT. II Depth of: DV Tool: w / sacks of cement Port Collar: w / sack of cement
Packer Type: Size: Inch Set at: Feet
Total Depth: Plug Back Depth: Plug Back Method:

Geological Data:

Table with 4 columns: Formation Name, Formation Top, Formation Base, Completion Information. Rows 1 and 2.

UNDER PENALTY OF PERJURY I HEREBY ATTEST THAT THE INFORMATION CONTAINED HEREIN IS TRUE AND CORRECT TO THE BEST OF MY KNOWLEDGE

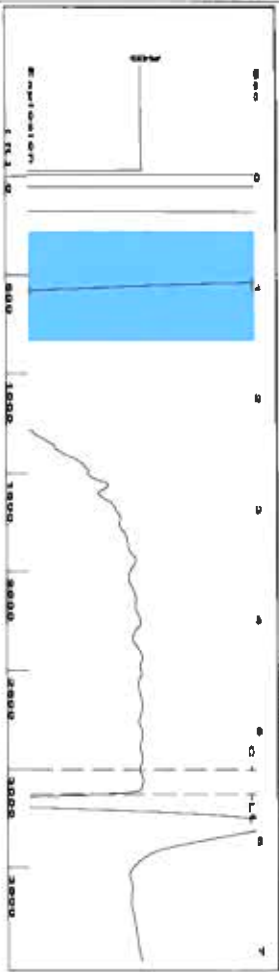
Submitted Electronically

Form with fields: Do NOT Write in This Space - KCC USE ONLY, Date Tested, Results, Date Plugged, Date Repaired, Date Put Back in Service, Review Completed by, Comments, TA Approved: Yes Denied, Date.

Mail to the Appropriate KCC Conservation Office:

Table with 2 columns: Office Address, Phone. Rows for KCC District Office #1, #2, #3, #4.

Group: Merit Energy Company-Ulysses Well: KU 9 (acquired on: 04/21/22 09:45:40)



Filter Type: High Pass  
Manual Acoustic Velocity: 120.14 ft/s  
Automatic Collar Count: Yes  
Manual JTS: sec 17.6678  
Time: 5.585 sec  
Joints: 98.6362 Jts  
Depth: 3126.77 ft

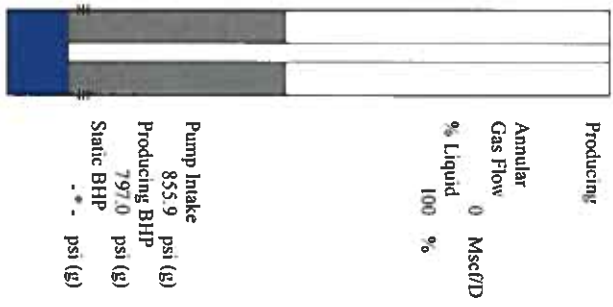
[ 0.5 to 1.5 (Sec) ]



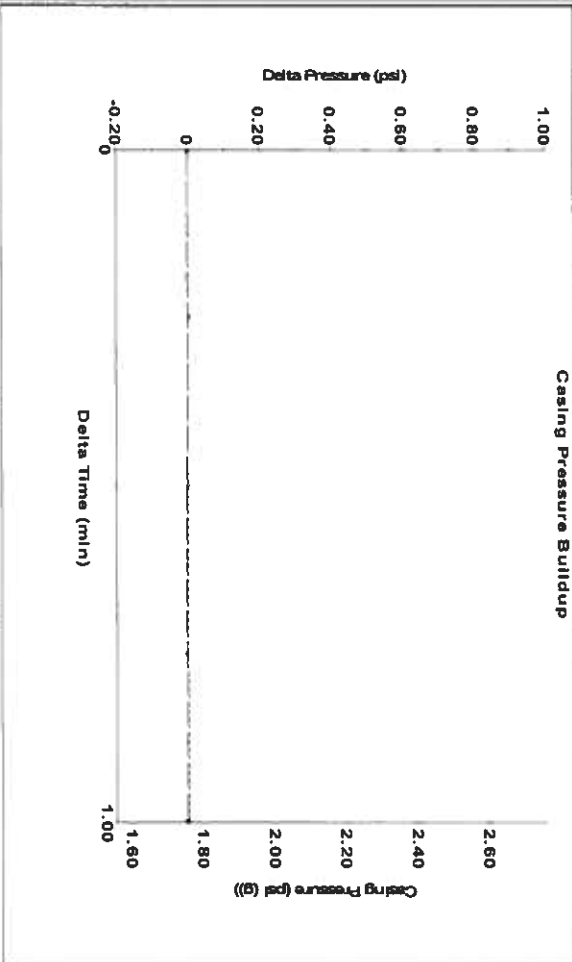
**Analysis Method: Automatic**

Group: Merit Energy Company-Ulysses Well: KU 9 (acquired on: 04/21/22 09:45:40)

Production	Potential	Casing Pressure	Producing
Oil: -*-	BBU/D	1.8 psi (g)	Annular
Water: -*-	BBU/D	Casing Pressure Buildup	Gas Flow
Gas: -*-	MscFD	-0.0 psi	% Liquid
		1.00 min	MscFD
IPR Method	Vogel	Gas/Liquid Interface Pressure	
PBHP/SBHP	-*-	3.3 psi (g)	
Production Efficiency	0.0		
		Liquid Level Depth	
Oil: 40 deg API		3126.77 ft	
Water: 1.05 Sp.Gr.H2O		Pump Intake Depth	
Gas: 0.86 Sp.Gr.AIR		5710.00 ft	
Acoustic Velocity	1119.7 ft/s	Formation Depth	
		5522.00 ft	

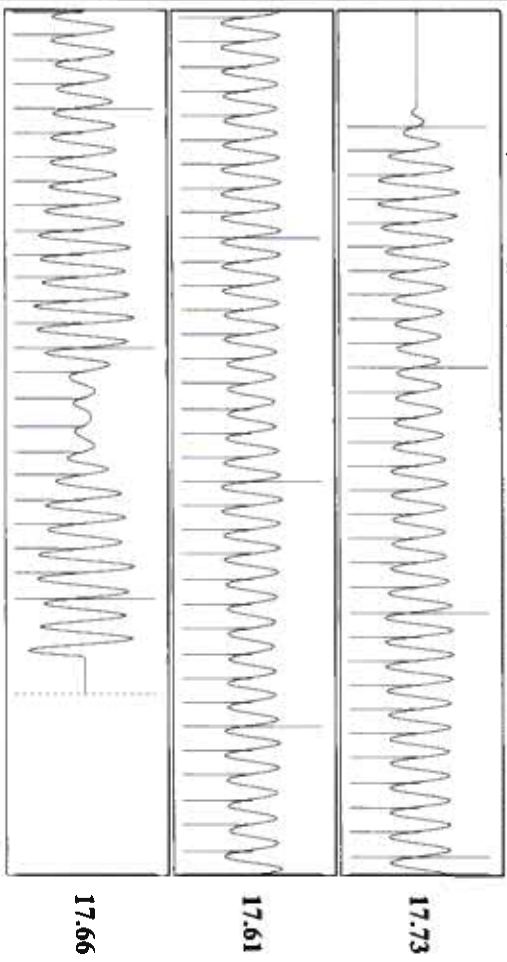


Group: Merit Energy Company-Ulysses Well: KU 9 (acquired on: 04/21/22 09:45:40)



Change in Pressure: -0.00 psi  
Change in Time: 1.00 min  
PTI: 6716  
Range: 0 - ? psi

Group: Merit Energy Company-Ulysses Well: KU 9 (acquired on: 04/21/22 09:45:40)



Acoustic Velocity: 1119.7 ft/s  
Joints Per Second: 17.6609 jts/sec  
Depth to liquid level: 3126.77 ft  
Automatic Collar Count: Yes

Joints counted: 90  
Joints to liquid level: 98.6362  
Filter Width: 15.6678  
Time to 1st Collar: 5.364

May 05, 2022

Katherine McClurkan  
Merit Energy Company, LLC  
13727 Noel Road, Suite 1200  
Dallas, TX 75240

Re: Temporary Abandonment  
API 15-187-21102-00-00  
KU 9-P20-29-39  
SE/4 Sec.20-29S-39W  
Stanton County, Kansas

Dear Katherine McClurkan:

"Your temporary abandonment (TA) application for the well listed above has been approved. In accordance with K.A.R. 82-3-111 the TA status of this well will expire 05/05/2023.

- \* If you return this well to service or plug it, please notify the District Office.
- \* If you sell this well you are required to file a Transfer of Operator form, T-1.
- \* If the well will remain temporarily abandoned, you must submit a new TA application, CP-111, before 05/05/2023.

You may contact me at the number above if you have questions.

Very truly yours,

Michael Maier"