

KANSAS CORPORATION COMMISSION
OIL & GAS CONSERVATION DIVISION

TEMPORARY ABANDONMENT WELL APPLICATION

OPERATOR: License#
Name:
Address 1:
Address 2:
City: State: Zip:
Contact Person:
Phone:
Contact Person Email:
Field Contact Person:
Field Contact Person Phone:

API No. 15-
Spot Description:
Sec. Twp. S. R.
GPS Location: Lat: Long:
Datum: NAD27 NAD83 WGS84
County: Elevation:
Lease Name: Well #:
Well Type: Oil Gas OG WSW Other:
SWD Permit #: ENHR Permit #:
Gas Storage Permit #:
Spud Date: Date Shut-In:

Table with 7 columns: Conductor, Surface, Production, Intermediate, Liner, Tubing. Rows include Size, Setting Depth, Amount of Cement, Top of Cement, Bottom of Cement.

Casing Fluid Level from Surface: How Determined? Date:
Casing Squeeze(s): to w / sacks of cement, to w / sacks of cement. Date:
Do you have a valid Oil & Gas Lease? Yes No
Depth and Type: Junk in Hole at Tools in Hole at Casing Leaks: Yes No Depth of casing leak(s):
Type Completion: ALT. I ALT. II Depth of: DV Tool: w / sacks of cement Port Collar: w / sack of cement
Packer Type: Size: Inch Set at: Feet
Total Depth: Plug Back Depth: Plug Back Method:

Geological Data:

Table with 4 columns: Formation Name, Formation Top, Formation Base, Completion Information. Rows 1 and 2.

UNDER PENALTY OF PERJURY I HEREBY ATTEST THAT THE INFORMATION CONTAINED HEREIN IS TRUE AND CORRECT TO THE BEST OF MY KNOWLEDGE

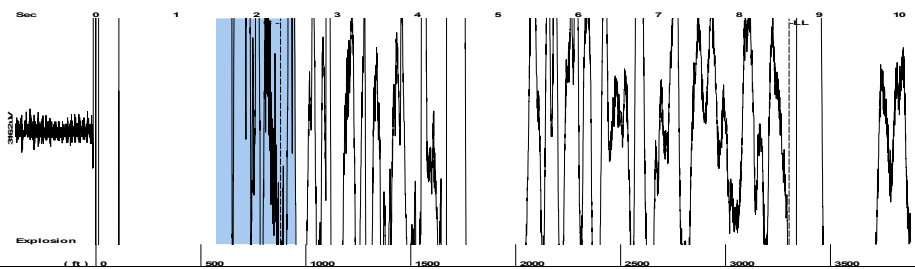
Submitted Electronically

Do NOT Write in This Space - KCC USE ONLY
Date Tested: Results: Date Plugged: Date Repaired: Date Put Back in Service:
Review Completed by: Comments:
TA Approved: Yes Denied Date:

Mail to the Appropriate KCC Conservation Office:

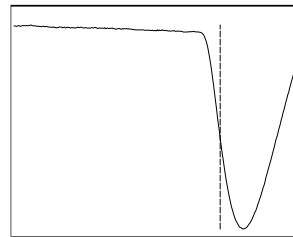
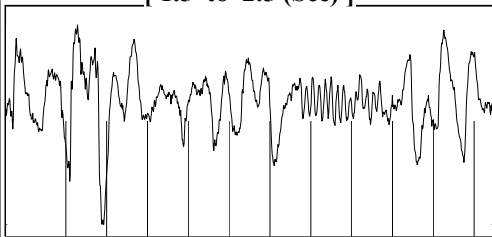
Table with 2 columns: Office Address, Phone. Rows for District Office #1, #2, #3, #4.

Group: Examples Well: BERTRAND #1 (acquired on: 05/09/22 14:34:41)



Filter Type High Pass Automatic Collar Count Yes Time 8.623 sec
 Manual Acoustic Veloc 755.662 ft/s Manual JTS/sec 11.919 Joints 104.181 Jts
 Depth 3302.54 ft

[1.5 to 2.5 (Sec)]



Analysis Method: Automatic

Group: Examples Well: BERTRAND #1 (acquired on: 05/09/22 14:34:41)

NO PRESSURE DATA AVAILABLE

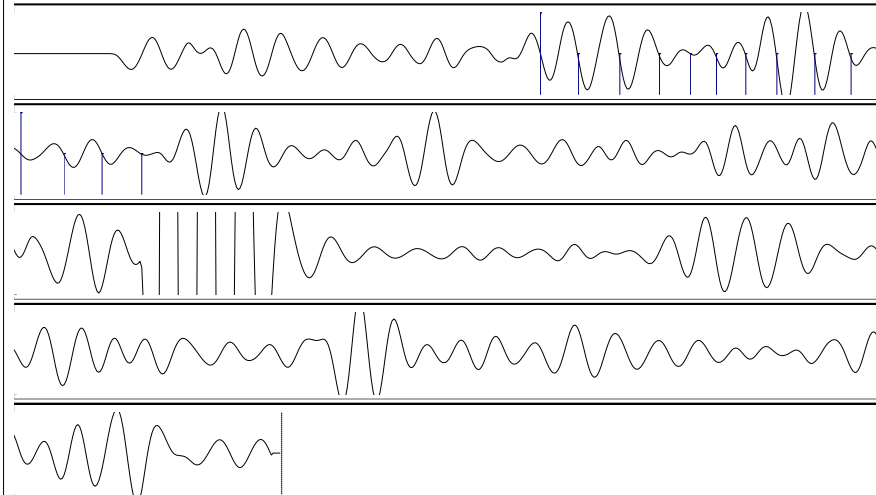
Change in Pressure -0.02 psi PT18514
 Range 0 - ? psi
 Change in Time 0.25 min

Group: Examples Well: BERTRAND #1 (acquired on: 05/09/22 14:34:41)

Production	Potential	Casing Pressure	Producing
Current			
Oil - * -	- * - BBL/D	-2.5 psi (g)	
Water - * -	- * - BBL/D	Casing Pressure Buildup	
Gas - * -	- * - Mscf/D	-0.017 psi	
		0.25 min	
IPR Method	Vogel	Gas/Liquid Interface Pressure	Annular Gas Flow
PBHP/SBHP	- * -	- * - psi (g)	- * - Mscf/D
Production Efficiency	0.0		% Liquid
			100 %
Oil 40 deg.API		Liquid Level Depth	
Water 1.05 Sp.Gr.H2O		3302.54 ft	
Gas 1.20 Sp.Gr.AIR		Pump Intake Depth	
		- * - ft	
Acoustic Velocity 765.985 ft/s		Formation Depth	
		4750.00 ft	
Formation Submergence			Pump Intake
Total Gaseous Liquid Column HT (TVD)		- * - ft	- * - psi (g)
Equivalent Gas Free Liquid HT (TVD)		- * - ft	Producing BHP
			- * - psi (g)
Acoustic Test			Static BHP
			- * - psi (g)



Group: Examples Well: BERTRAND #1 (acquired on: 05/09/22 14:34:41)



Acoustic Velocity	765.985 ft/s	Joints counted	13
Joints Per Second	12.0818 jts/sec	Joints to liquid level	104.181
Depth to liquid level	3302.54 ft	Filter Width	9.91895 13.919
Automatic Collar Count	Yes	Time to 1st Collar	1.22 2.296

Conservation Division
District Office No. 4
2301 E. 13th Street
Hays, KS 67601-2651



Phone: 785-261-6250
Fax: 785-625-0564
<http://kcc.ks.gov/>

Dwight D. Keen, Chair
Susan K. Duffy, Commissioner
Andrew J. French, Commissioner

Laura Kelly, Governor

May 11, 2022

Octavio Morales
American Warrior, Inc.
PO BOX 399
GARDEN CITY, KS 67846-0399

Re: Temporary Abandonment
API 15-109-20673-00-00
BERTRAND 1
NW/4 Sec.26-11S-33W
Logan County, Kansas

Dear Octavio Morales:

"Your temporary abandonment (TA) application for the well listed above has been approved. In accordance with K.A.R. 82-3-111 the TA status of this well will expire 05/11/2023.

- * If you return this well to service or plug it, please notify the District Office.
- * If you sell this well you are required to file a Transfer of Operator form, T-1.
- * If the well will remain temporarily abandoned, you must submit a new TA application, CP-111, before 05/11/2023.

You may contact me at the number above if you have questions.

Very truly yours,

RICHARD WILLIAMS"