

KANSAS CORPORATION COMMISSION
OIL & GAS CONSERVATION DIVISION

TEMPORARY ABANDONMENT WELL APPLICATION

OPERATOR: License#
Name:
Address 1:
Address 2:
City: State: Zip:
Contact Person:
Phone:
Contact Person Email:
Field Contact Person:
Field Contact Person Phone:

API No. 15-
Spot Description:
Sec. Twp. S. R.
GPS Location: Lat: Long:
Datum: NAD27 NAD83 WGS84
County: Elevation:
Lease Name: Well #:
Well Type: Oil Gas OG WSW Other:
SWD Permit #: ENHR Permit #:
Gas Storage Permit #:
Spud Date: Date Shut-In:

Table with 7 columns: Conductor, Surface, Production, Intermediate, Liner, Tubing. Rows include Size, Setting Depth, Amount of Cement, Top of Cement, Bottom of Cement.

Casing Fluid Level from Surface: How Determined? Date:
Casing Squeeze(s): to w / sacks of cement, to w / sacks of cement. Date:
Do you have a valid Oil & Gas Lease? Yes No
Depth and Type: Junk in Hole at Tools in Hole at Casing Leaks: Yes No Depth of casing leak(s):
Type Completion: ALT. I ALT. II Depth of: DV Tool: w / sacks of cement Port Collar: w / sack of cement
Packer Type: Size: Inch Set at: Feet
Total Depth: Plug Back Depth: Plug Back Method:

Geological Data:

Table with 4 columns: Formation Name, Formation Top, Formation Base, Completion Information. Rows 1 and 2.

UNDER PENALTY OF PERJURY I HEREBY ATTEST THAT THE INFORMATION CONTAINED HEREIN IS TRUE AND CORRECT TO THE BEST OF MY KNOWLEDGE

Submitted Electronically

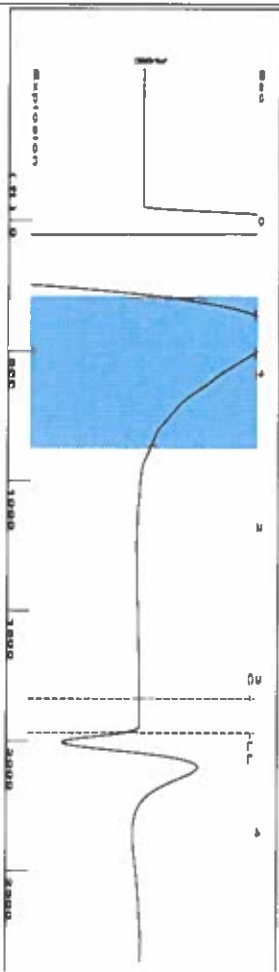
Do NOT Write in This Space - KCC USE ONLY
Date Tested: Results: Date Plugged: Date Repaired: Date Put Back in Service:
Review Completed by: Comments:
TA Approved: Yes Denied Date:

Mail to the Appropriate KCC Conservation Office:

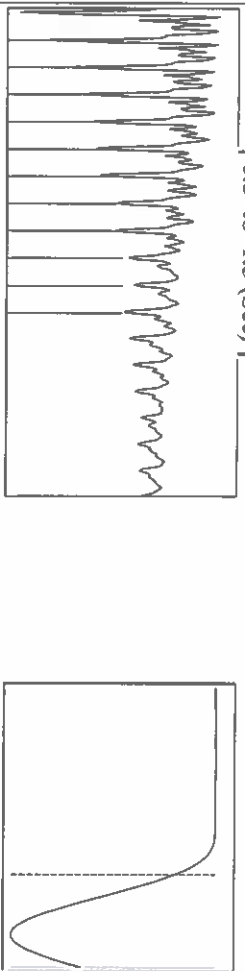
Table with 2 columns: Office Address, Phone. Rows for District Office #1, #2, #3, #4.

Shot @ 300th J/K TAD

Group: Liberal Wells Well: Ridenour A-1 (acquired on: 05/18/22 11:26:30)



Filter Type High Pass Automatic Collar Count Yes Time 3.347 sec
 Manual Acoustic Velo 1132.14 ft/s Manual JTS/sec 17.8571 Joints 62.0248 Jis
 Depth 1966.19 ft



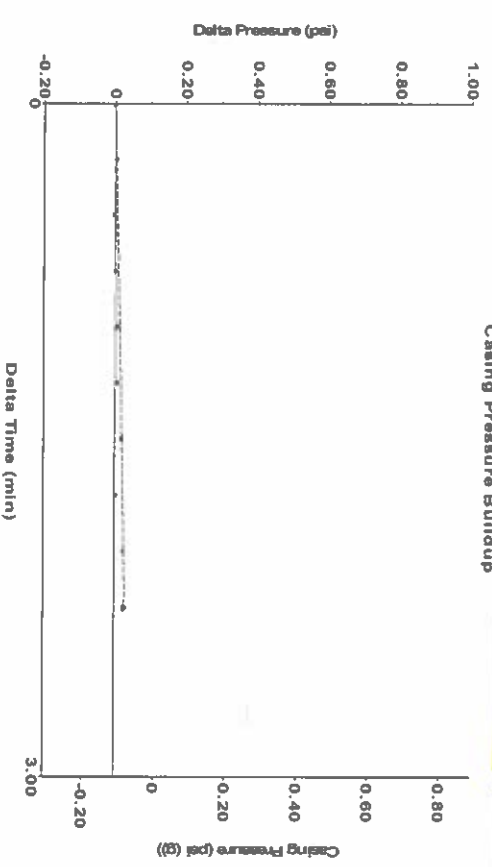
Analysis Method: Automatic

Group: Liberal Wells Well: Ridenour A-1 (acquired on: 05/18/22 11:26:30)

Production Current	Potential	Casing Pressure	Static
Oil -*- BBL/D	-*- BBL/D	-0.1 psi (g)	Oil Column Height MD 0 ft
Water -*- BBL/D	-*- BBL/D	Casing Pressure Buildup 0.0 psi	Water Column Height MD 3717 ft
Gas -*- Mscf/D	-*- Mscf/D	2.00 min	Static BHP 1690.9 psi (g)
IPR Method Vogel	Vogel	Gas/Liquid Interface Pressure 0.7 psi (g)	
PBHP/SBHP -*-	-*-		
Production Efficiency 0.0			
Oil 40 deg API		Liquid Level Depth 1966.19 ft	
Water 1.05 Sp.Gr:H2O		Pump Intake Depth 5683.00 ft	
Gas 0.80 Sp.Gr:AIR		Formation Depth 5694.00 ft	
Acoustic Velocity 1174.9 ft/s			

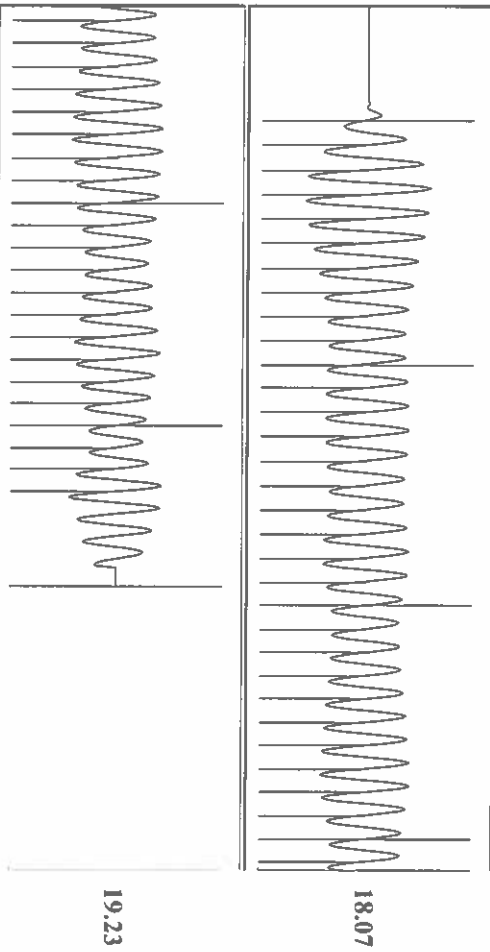


Group: Liberal Wells Well: Ridenour A-1 (acquired on: 05/18/22 11:26:30)



Change in Pressure 0.03 psi PT 11249
 Change in Time 2.25 min Range 0 - ? psi

Group: Liberal Wells Well: Ridenour A-1 (acquired on: 05/18/22 11:26:30)



Acoustic Velocity 1174.9 ft/s Joints counted 53
 Joints Per Second 18.5315 Jis/sec 62.0248
 Depth to liquid level 1966.19 ft Filter Width 15.8571
 Automatic Collar Count Yes Time to 1st Collar 3.124

May 18, 2022

Katherine McClurkan
Merit Energy Company, LLC
13727 Noel Road, Suite 1200
DALLAS, TX 75240-7362

Re: Temporary Abandonment
API 15-175-21818-00-01
Ridenour A 1
SW/4 Sec.27-31S-34W
Seward County, Kansas

Dear Katherine McClurkan:

"Your temporary abandonment (TA) application for the well listed above has been approved. In accordance with K.A.R. 82-3-111 the TA status of this well will expire 05/18/2023.

- * If you return this well to service or plug it, please notify the District Office.
- * If you sell this well you are required to file a Transfer of Operator form, T-1.
- * If the well will remain temporarily abandoned, you must submit a new TA application, CP-111, before 05/18/2023.

You may contact me at the number above if you have questions.

Very truly yours,

Michael Maier"