

KANSAS CORPORATION COMMISSION  
OIL & GAS CONSERVATION DIVISION

TEMPORARY ABANDONMENT WELL APPLICATION

OPERATOR: License# \_\_\_\_\_  
 Name: \_\_\_\_\_  
 Address 1: \_\_\_\_\_  
 Address 2: \_\_\_\_\_  
 City: \_\_\_\_\_ State: \_\_\_\_\_ Zip: \_\_\_\_\_ + \_\_\_\_\_  
 Contact Person: \_\_\_\_\_  
 Phone: ( \_\_\_\_\_ ) \_\_\_\_\_  
 Contact Person Email: \_\_\_\_\_  
 Field Contact Person: \_\_\_\_\_  
 Field Contact Person Phone: ( \_\_\_\_\_ ) \_\_\_\_\_

API No. 15- \_\_\_\_\_  
 Spot Description: \_\_\_\_\_  
 \_\_\_\_\_ - \_\_\_\_\_ - \_\_\_\_\_ - \_\_\_\_\_ Sec. \_\_\_\_\_ Twp. \_\_\_\_\_ S. R. \_\_\_\_\_  E  W  
 \_\_\_\_\_ feet from  N /  S Line of Section  
 \_\_\_\_\_ feet from  E /  W Line of Section  
 GPS Location: Lat: \_\_\_\_\_, Long: \_\_\_\_\_  
(e.g. xx.xxxxx) (e.g. -xxx.xxxxx)  
 Datum:  NAD27  NAD83  WGS84  
 County: \_\_\_\_\_ Elevation: \_\_\_\_\_  GL  KB  
 Lease Name: \_\_\_\_\_ Well #: \_\_\_\_\_  
 Well Type: (check one)  Oil  Gas  OG  WSW  Other: \_\_\_\_\_  
 SWD Permit #: \_\_\_\_\_  ENHR Permit #: \_\_\_\_\_  
 Gas Storage Permit #: \_\_\_\_\_  
 Spud Date: \_\_\_\_\_ Date Shut-In: \_\_\_\_\_

	Conductor	Surface	Production	Intermediate	Liner	Tubing
Size						
Setting Depth						
Amount of Cement						
Top of Cement						
Bottom of Cement						

Casing Fluid Level from Surface: \_\_\_\_\_ How Determined? \_\_\_\_\_ Date: \_\_\_\_\_  
 Casing Squeeze(s): \_\_\_\_\_ to \_\_\_\_\_ w / \_\_\_\_\_ sacks of cement, \_\_\_\_\_ to \_\_\_\_\_ w / \_\_\_\_\_ sacks of cement. Date: \_\_\_\_\_  
(top) (bottom) (top) (bottom)  
 Do you have a valid Oil & Gas Lease?  Yes  No  
 Depth and Type:  Junk in Hole at \_\_\_\_\_  Tools in Hole at \_\_\_\_\_ Casing Leaks:  Yes  No Depth of casing leak(s): \_\_\_\_\_  
(depth) (depth)  
 Type Completion:  ALT. I  ALT. II Depth of:  DV Tool: \_\_\_\_\_ w / \_\_\_\_\_ sacks of cement  Port Collar: \_\_\_\_\_ w / \_\_\_\_\_ sack of cement  
(depth) (depth)  
 Packer Type: \_\_\_\_\_ Size: \_\_\_\_\_ Inch Set at: \_\_\_\_\_ Feet  
 Total Depth: \_\_\_\_\_ Plug Back Depth: \_\_\_\_\_ Plug Back Method: \_\_\_\_\_

**Geological Data:**

Formation Name	Formation Top	Formation Base	Completion Information
1. _____	At: _____	to _____ Feet	Perforation Interval _____ to _____ Feet or Open Hole Interval _____ to _____ Feet
2. _____	At: _____	to _____ Feet	Perforation Interval _____ to _____ Feet or Open Hole Interval _____ to _____ Feet

UNDER PENALTY OF PERJURY I HEREBY ATTEST THAT THE INFORMATION CONTAINED HEREIN IS TRUE AND CORRECT TO THE BEST OF MY KNOWLEDGE

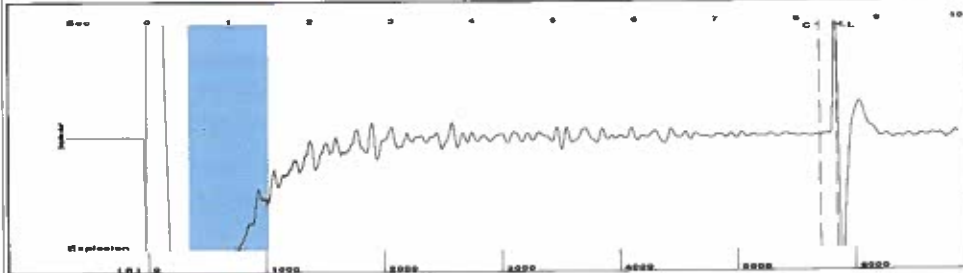
Submitted Electronically

<b>Do NOT Write in This Space - KCC USE ONLY</b>	Date Tested: _____	Results: _____	Date Plugged: _____	Date Repaired: _____	Date Put Back in Service: _____
	Review Completed by: _____ Comments: _____				
TA Approved: <input type="checkbox"/> Yes <input type="checkbox"/> Denied Date: _____					

Mail to the Appropriate KCC Conservation Office:

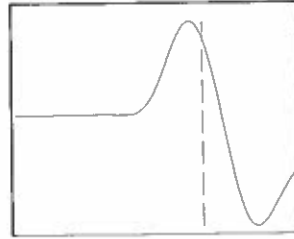
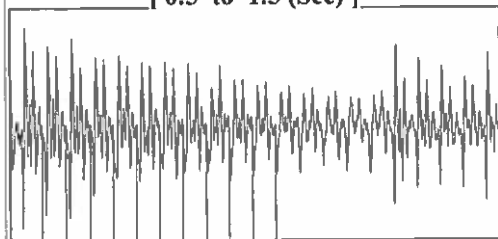
	KCC District Office #1 - 210 E. Frontview, Suite A, Dodge City, KS 67801	Phone 620.682.7933
	KCC District Office #2 - 3450 N. Rock Road, Building 600, Suite 601, Wichita, KS 67226	Phone 316.337.7400
	KCC District Office #3 - 137 E. 21st St., Chanute, KS 66720	Phone 620.902.6450
	KCC District Office #4 - 2301 E. 13th Street, Hays, KS 67601-2651	Phone 785.261.6250

Group: TA'D WELLS Well: MEREDITHE JEANNE OWWO A-1 (acquired on: 05/11/22 14:21:07)



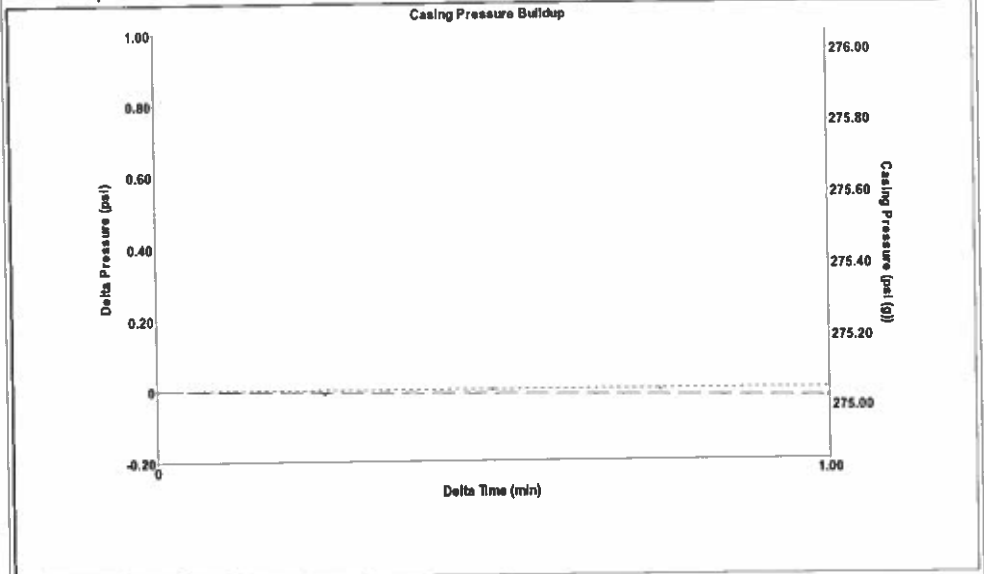
Filter Type High Pass Automatic Collar Count Yes Time 8.5 sec  
 Manual Acoustic Vel 1331.93 ft/s Manual JTS/sec 21.0084 Joints 184.414 Jts  
 Depth 5845.92 ft

[ 0.5 to 1.5 (Sec) ]



Analysis Method: Automatic

Group: TA'D WELLS Well: MEREDITHE JEANNE OWWO A-1 (acquired on: 05/11/22 14:21:07)



Change in Pressure -0.02 psi PT9424  
 Range 0 - ? psi  
 Change in Time 1.00 min

Group: TA'D WELLS Well: MEREDITHE JEANNE OWWO A-1 (acquired on: 05/11/22 14:21:07)

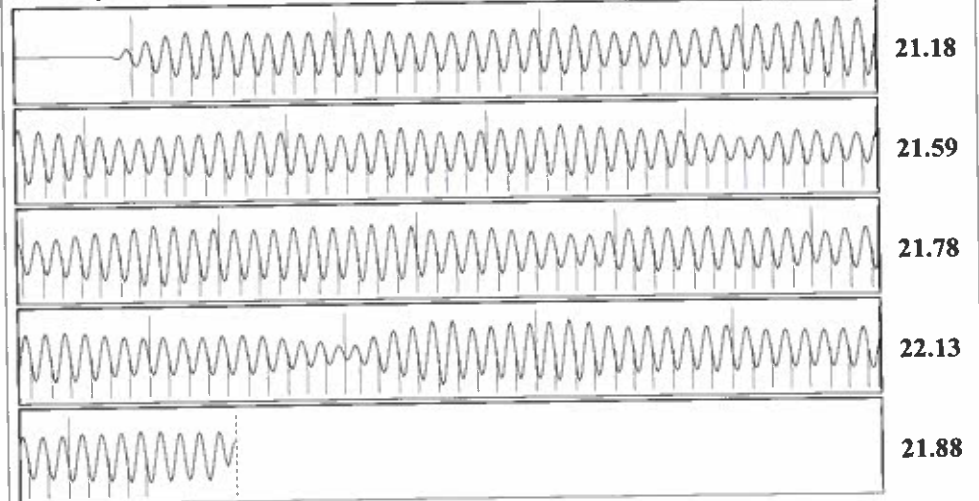
Production		Casing Pressure
Current	Potential	275.1 psi (g)
Oil -*- BBL/D	-*- BBL/D	Casing Pressure Buildup
Water -*-	-*- BBL/D	-0.025 psi
Gas -*-	-*- Mscf/D	1.00 min
IPR Method	Vogel	Gas/Liquid Interface Pressure
PBHP/SBHP	-*-	313.8 psi (g)
Production Efficiency	0.0	Liquid Level Depth
Oil 40 deg API		5845.92 ft
Water 1.05 Sp.Gr.H2O		Pump Intake Depth
Gas 0.62 Sp.Gr.AIR		5860.00 ft
Acoustic Velocity	1375.51 ft/s	Formation Depth
		6085.00 ft



Producing
Annular Gas Flow
0 Mscf/D
% Liquid
100 %
Pump Intake
318.5 psi (g)
Producing BHP
420.8 psi (g)
Static BHP
- * - psi (g)

Formation Submergence	14 ft
Total Gaseous Liquid Column HT (TVD)	14 ft
Equivalent Gas Free Liquid HT (TVD)	
Acoustic Test	

Group: TA'D WELLS Well: MEREDITHE JEANNE OWWO A-1 (acquired on: 05/11/22 14:21:07)



Acoustic Velocity	1375.51 ft/s	Joints counted	174
Joints Per Second	21.6958 jts/sec	Joints to liquid level	184.414
Depth to liquid level	5845.92 ft	Filter Width	19.0084
Automatic Collar Count	Yes	Time to 1st Collar	0.272
			23.0084
			8.292

May 19, 2022

Katherine McClurkan  
Merit Energy Company, LLC  
13727 Noel Road, Suite 1200  
Dallas, TX 75240

Re: Temporary Abandonment  
API 15-129-21355-00-01  
Meredithe Jeanne OWWO 1  
SW/4 Sec.31-31S-39W  
Morton County, Kansas

Dear Katherine McClurkan:

"Your temporary abandonment (TA) application for the well listed above has been approved. In accordance with K.A.R. 82-3-111 the TA status of this well will expire 01/19/2023.

- \* If you return this well to service or plug it, please notify the District Office.
- \* If you sell this well you are required to file a Transfer of Operator form, T-1.
- \* If the well will remain temporarily abandoned, you must submit a new TA application, CP-111, before 01/19/2023.

You may contact me at the number above if you have questions.

Very truly yours,

Michael Maier"