

KANSAS CORPORATION COMMISSION
OIL & GAS CONSERVATION DIVISION

TEMPORARY ABANDONMENT WELL APPLICATION

OPERATOR: License#
Name:
Address 1:
Address 2:
City: State: Zip:
Contact Person:
Phone:
Contact Person Email:
Field Contact Person:
Field Contact Person Phone:

API No. 15-
Spot Description:
Sec. Twp. S. R.
feet from N / S Line of Section
feet from E / W Line of Section
GPS Location: Lat: , Long:
Datum: NAD27 NAD83 WGS84
County: Elevation: GL KB
Lease Name: Well #:
Well Type: (check one) Oil Gas OG WSW Other:
SWD Permit #: ENHR Permit #:
Gas Storage Permit #:
Spud Date: Date Shut-In:

Table with 7 columns: Conductor, Surface, Production, Intermediate, Liner, Tubing. Rows include Size, Setting Depth, Amount of Cement, Top of Cement, Bottom of Cement.

Casing Fluid Level from Surface: How Determined? Date:
Casing Squeeze(s): to w / sacks of cement, to w / sacks of cement. Date:
Do you have a valid Oil & Gas Lease? Yes No
Depth and Type: Junk in Hole at Tools in Hole at Casing Leaks: Yes No Depth of casing leak(s):
Type Completion: ALT. I ALT. II Depth of: DV Tool: w / sacks of cement Port Collar: w / sack of cement
Packer Type: Size: Inch Set at: Feet
Total Depth: Plug Back Depth: Plug Back Method:

Geological Date:

Table with 4 columns: Formation Name, Formation Top, Formation Base, Completion Information. Rows 1 and 2.

UNDER PENALTY OF PERJURY I HEREBY ATTEST THAT THE INFORMATION CONTAINED HEREIN IS TRUE AND CORRECT TO THE BEST OF MY KNOWLEDGE

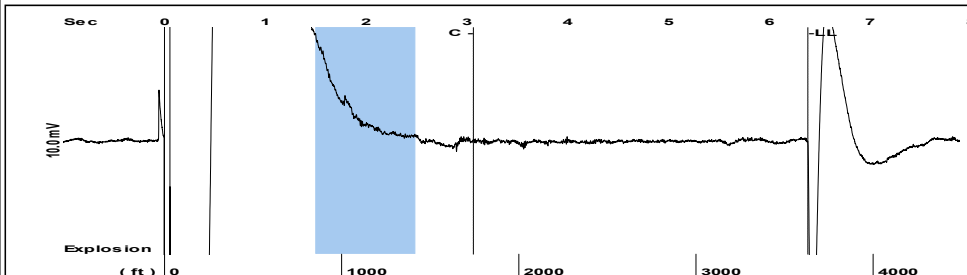
Submitted Electronically

Do NOT Write in This Space - KCC USE ONLY
Date Tested: Results: Date Plugged: Date Repaired: Date Put Back in Service:
Review Completed by: Comments:
TA Approved: Yes Denied Date:

Mail to the Appropriate KCC Conservation Office:

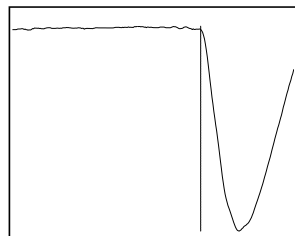
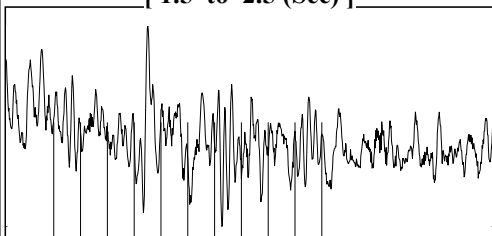
Table with 3 columns: District Office #, Address, Phone. Rows 1-4.

Group: MyWells Well: Unruh-D # 2 (acquired on: 05/09/22 10:36:11)



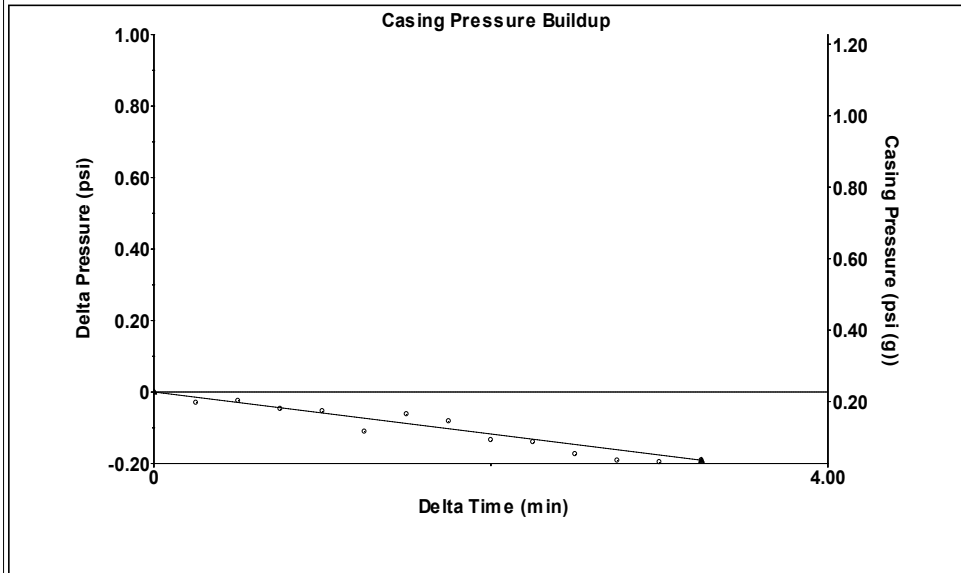
Filter Type High Pass Automatic Collar Count Yes Time 6.383 sec
 Manual Acoustic Velo 1134.91 ft/s Manual JTS/sec 18.1818 Joints 116.357 Jts
 Depth 3631.49 ft

[1.5 to 2.5 (Sec)]



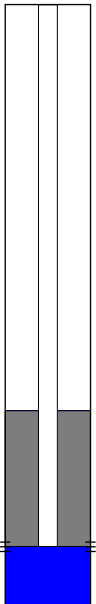
Analysis Method: Automatic

Group: MyWells Well: Unruh-D # 2 (acquired on: 05/09/22 10:36:11)

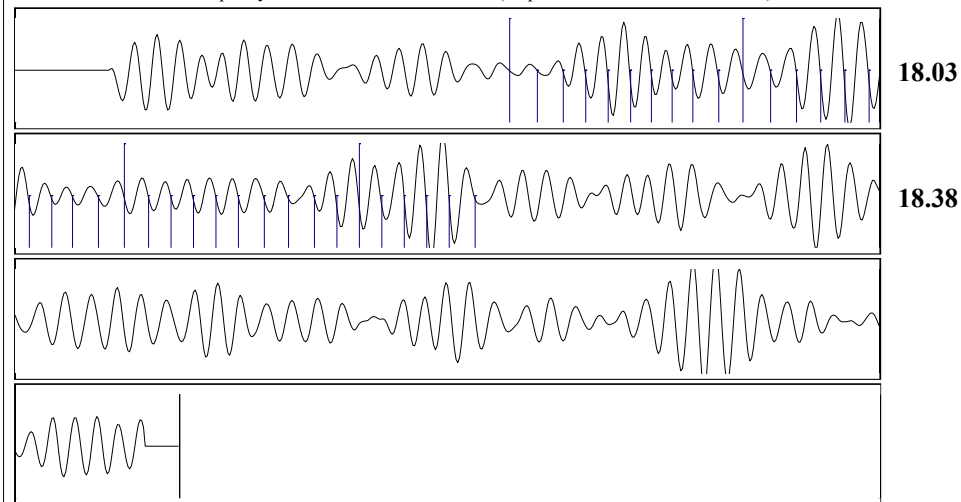


Change in Pressure -0.19 psi PT 17384
 Change in Time 3.25 min Range 0 - ? psi

Group: MyWells Well: Unruh-D # 2 (acquired on: 05/09/22 10:36:11)

Production	Potential	Casing Pressure		Producing
Current	- * - BBL/D	0.2 psi (g)		Annular
Oil - * -	- * - BBL/D	Casing Pressure Buildup		Gas Flow
Water - * -	- * - Mscf/D	-0.191 psi		0 Mscf/D
Gas - * -		3.25 min	% Liquid	100 %
IPR Method	Vogel	Gas/Liquid Interface Pressure		
PBHP/SBHP	- * -	1.9 psi (g)		
Production Efficiency	0.0			
		Liquid Level Depth		
Oil 40 deg.API		3631.49 ft		
Water 1.05 Sp.Gr.H2O		Pump Intake Depth		
Gas 0.85 Sp.Gr.AIR		5060.00 ft		
Acoustic Velocity 1137.86 ft/s		Formation Depth		
		5060.00 ft		
Formation Submergence				
Total Gaseous Liquid Column HT (TVD)		1429 ft		
Equivalent Gas Free Liquid HT (TVD)		1429 ft		
Acoustic Test				
		Pump Intake		
		482.1 psi (g)		
		Producing BHP		
		482.1 psi (g)		
		Static BHP		
		- * - psi (g)		

Group: MyWells Well: Unruh-D # 2 (acquired on: 05/09/22 10:36:11)



Acoustic Velocity 1137.86 ft/s Joints counted 35
 Joints Per Second 18.2292 jts/sec Joints to liquid level 116.357
 Depth to liquid level 3631.49 ft Filter Width 16.1818 20.1818
 Automatic Collar Count Yes Time to 1st Collar 1.144 3.064

May 19, 2022

MELODY FLETCHER
Oil Producers, Inc. of Kansas
1710 WATERFRONT PKWY
WICHITA, KS 67206-6603

Re: Temporary Abandonment
API 15-033-21201-00-00
UNRUH D 2
NW/4 Sec.02-31S-18W
Comanche County, Kansas

Dear MELODY FLETCHER:

"Your temporary abandonment (TA) application for the well listed above has been approved. In accordance with K.A.R. 82-3-111 the TA status of this well will expire 05/19/2023.

- * If you return this well to service or plug it, please notify the District Office.
- * If you sell this well you are required to file a Transfer of Operator form, T-1.
- * If the well will remain temporarily abandoned, you must submit a new TA application, CP-111, before 05/19/2023.

You may contact me at the number above if you have questions.

Very truly yours,

Michael Maier"