

KANSAS CORPORATION COMMISSION
OIL & GAS CONSERVATION DIVISION

TEMPORARY ABANDONMENT WELL APPLICATION

OPERATOR: License#
Name:
Address 1:
Address 2:
City: State: Zip:
Contact Person:
Phone:
Contact Person Email:
Field Contact Person:
Field Contact Person Phone:

API No. 15-
Spot Description:
Sec. Twp. S. R.
GPS Location: Lat: Long:
Datum: NAD27 NAD83 WGS84
County: Elevation:
Lease Name: Well #:
Well Type: Oil Gas OG WSW Other:
SWD Permit #: ENHR Permit #:
Gas Storage Permit #:
Spud Date: Date Shut-In:

Table with 7 columns: Conductor, Surface, Production, Intermediate, Liner, Tubing. Rows include Size, Setting Depth, Amount of Cement, Top of Cement, Bottom of Cement.

Casing Fluid Level from Surface: How Determined? Date:
Casing Squeeze(s): to w / sacks of cement, to w / sacks of cement. Date:
Do you have a valid Oil & Gas Lease? Yes No
Depth and Type: Junk in Hole at Tools in Hole at Casing Leaks: Yes No Depth of casing leak(s):
Type Completion: ALT. I ALT. II Depth of: DV Tool: w / sacks of cement Port Collar: w / sack of cement
Packer Type: Size: Inch Set at: Feet
Total Depth: Plug Back Depth: Plug Back Method:

Geological Data:

Table with 4 columns: Formation Name, Formation Top, Formation Base, Completion Information. Rows 1 and 2.

UNDER PENALTY OF PERJURY I HEREBY ATTEST THAT THE INFORMATION CONTAINED HEREIN IS TRUE AND CORRECT TO THE BEST OF MY KNOWLEDGE

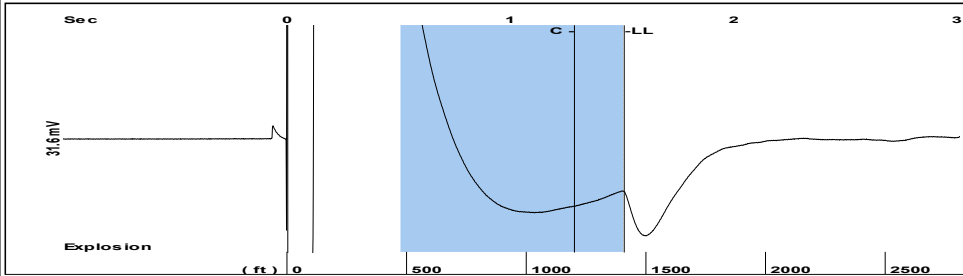
Submitted Electronically

Do NOT Write in This Space - KCC USE ONLY
Date Tested: Results: Date Plugged: Date Repaired: Date Put Back in Service:
Review Completed by: Comments:
TA Approved: Yes Denied Date:

Mail to the Appropriate KCC Conservation Office:

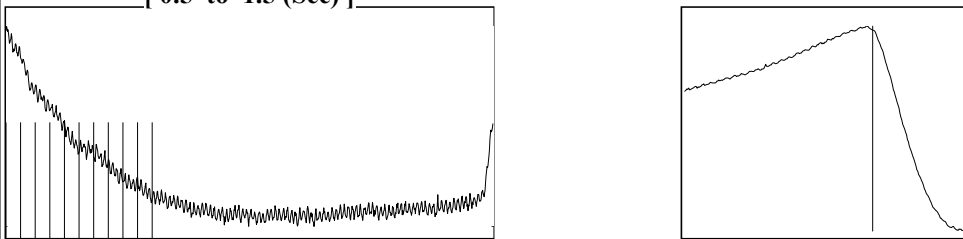
Table with 3 columns: District Office #, Address, Phone. Rows 1-4.

Group: MyWells Well: Lang # 3 (acquired on: 05/06/22 10:16:13)



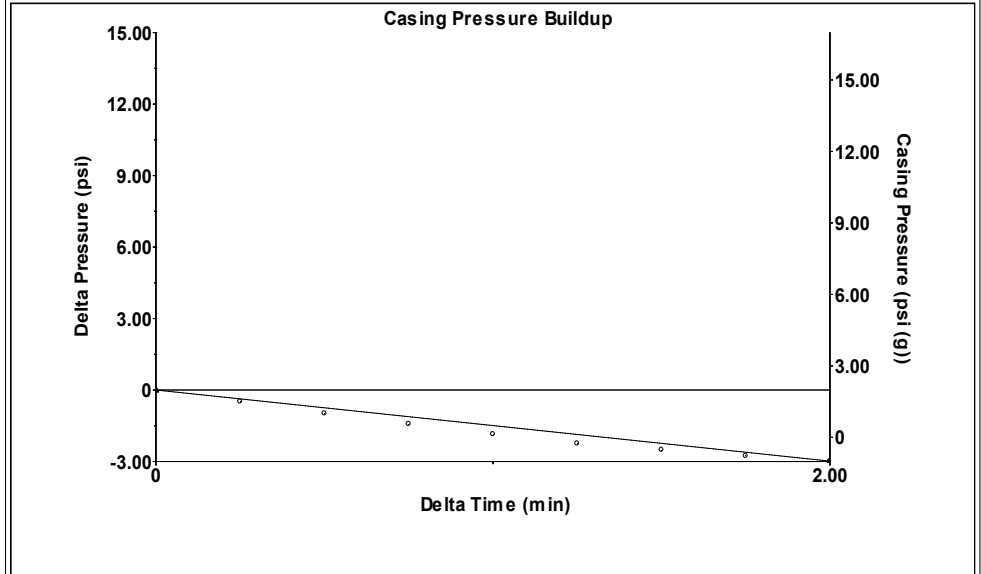
Filter Type High Pass Automatic Collar Count Yes Time 1.511 sec
 Manual Acoustic Velo 1876.67 ft/s Manual JTS/sec 33.3333 Joints 50.0633 Jts
 Depth 1409.28 ft

[0.5 to 1.5 (Sec)]



Analysis Method: Automatic

Group: MyWells Well: Lang # 3 (acquired on: 05/06/22 10:16:13)

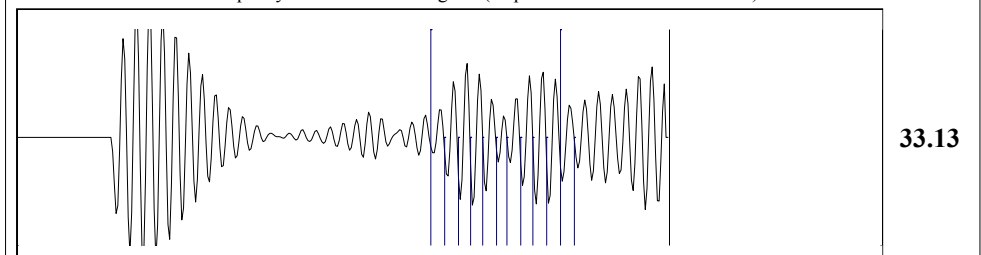


Change in Pressure -2.99 psi PT 17384
 Change in Time 2.00 min Range 0 - ? psi

Group: MyWells Well: Lang # 3 (acquired on: 05/06/22 10:16:13)

Production					
Current	Potential	Casing Pressure	Producing		
Oil - *-	- *- BBL/D	2.0 psi (g)	Annular		
Water - *-	- *- BBL/D	Casing Pressure Buildup	Gas Flow	0 Mscf/D	
Gas - *-	- *- Mscf/D	-2.986 psi	% Liquid	100 %	
		2.00 min			
IPR Method	Vogel	Gas/Liquid Interface Pressure			
PBHP/SBHP	- *-	2.4 psi (g)			
Production Efficiency	0.0				
		Liquid Level Depth			
Oil 40 deg.API		1409.28 ft			
Water 1.05 Sp.Gr.H2O		Pump Intake Depth			
Gas 0.55 Sp.Gr.AIR		3545.00 ft			
Acoustic Velocity	1865.36 ft/s	Formation Depth			
		3545.00 ft			
Formation Submergence			Pump Intake		
Total Gaseous Liquid Column HT (TVD)	2136 ft		712.1 psi (g)		
Equivalent Gas Free Liquid HT (TVD)	2136 ft		Producing BHP		
			712.1 psi (g)		
Acoustic Test			Static BHP		
			- *- psi (g)		

Group: MyWells Well: Lang # 3 (acquired on: 05/06/22 10:16:13)



33.13

Acoustic Velocity 1865.36 ft/s Joints counted 11
 Joints Per Second 33.1325 jts/sec Joints to liquid level 50.0633
 Depth to liquid level 1409.28 ft Filter Width 31.3333 35.3333
 Automatic Collar Count Yes Time to 1st Collar 0.956 1.288

Conservation Division
District Office No. 4
2301 E. 13th Street
Hays, KS 67601-2651



Phone: 785-261-6250
Fax: 785-625-0564
<http://kcc.ks.gov/>

Dwight D. Keen, Chair
Susan K. Duffy, Commissioner
Andrew J. French, Commissioner

Laura Kelly, Governor

May 24, 2022

MELODY FLETCHER
Oil Producers, Inc. of Kansas
1710 WATERFRONT PKWY
WICHITA, KS 67206-6603

Re: Temporary Abandonment
API 15-051-20647-00-00
LANG 3
NE/4 Sec.08-14S-17W
Ellis County, Kansas

Dear MELODY FLETCHER:

"Your temporary abandonment (TA) application for the well listed above has been approved. In accordance with K.A.R. 82-3-111 the TA status of this well will expire 05/24/2023.

- * If you return this well to service or plug it, please notify the District Office.
- * If you sell this well you are required to file a Transfer of Operator form, T-1.
- * If the well will remain temporarily abandoned, you must submit a new TA application, CP-111, before 05/24/2023.

You may contact me at the number above if you have questions.

Very truly yours,

RICHARD WILLIAMS"