

KANSAS CORPORATION COMMISSION
OIL & GAS CONSERVATION DIVISION

TEMPORARY ABANDONMENT WELL APPLICATION

OPERATOR: License#
Name:
Address 1:
Address 2:
City: State: Zip:
Contact Person:
Phone:
Contact Person Email:
Field Contact Person:
Field Contact Person Phone:

API No. 15-
Spot Description:
Sec. Twp. S. R.
GPS Location: Lat: Long:
Datum: NAD27 NAD83 WGS84
County: Elevation:
Lease Name: Well #:
Well Type: Oil Gas OG WSW Other:
SWD Permit #: ENHR Permit #:
Gas Storage Permit #:
Spud Date: Date Shut-In:

Table with 7 columns: Conductor, Surface, Production, Intermediate, Liner, Tubing. Rows include Size, Setting Depth, Amount of Cement, Top of Cement, Bottom of Cement.

Casing Fluid Level from Surface: How Determined? Date:
Casing Squeeze(s): to w / sacks of cement, to w / sacks of cement. Date:
Do you have a valid Oil & Gas Lease? Yes No
Depth and Type: Junk in Hole at Tools in Hole at Casing Leaks: Yes No Depth of casing leak(s):
Type Completion: ALT. I ALT. II Depth of: DV Tool: w / sacks of cement Port Collar: w / sack of cement
Packer Type: Size: Inch Set at: Feet
Total Depth: Plug Back Depth: Plug Back Method:

Geological Data:

Table with 4 columns: Formation Name, Formation Top, Formation Base, Completion Information. Rows 1 and 2.

UNDER PENALTY OF PERJURY I HEREBY ATTEST THAT THE INFORMATION CONTAINED HEREIN IS TRUE AND CORRECT TO THE BEST OF MY KNOWLEDGE

Submitted Electronically

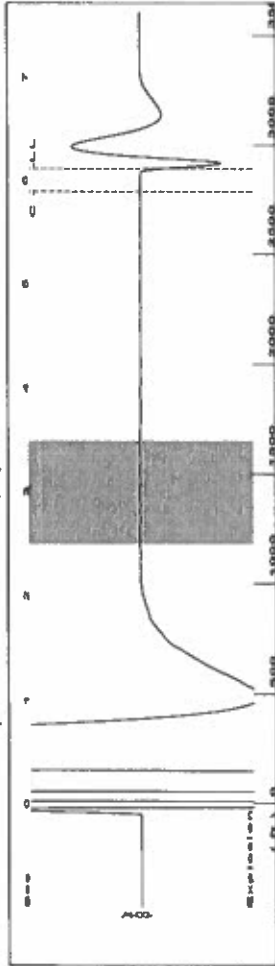
Do NOT Write in This Space - KCC USE ONLY
Date Tested: Results: Date Plugged: Date Repaired: Date Put Back in Service:
Review Completed by: Comments:
TA Approved: Yes Denied Date:

Mail to the Appropriate KCC Conservation Office:

Table with 2 columns: Office Address, Phone. Rows for District Office #1, #2, #3, #4.



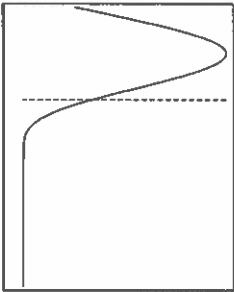
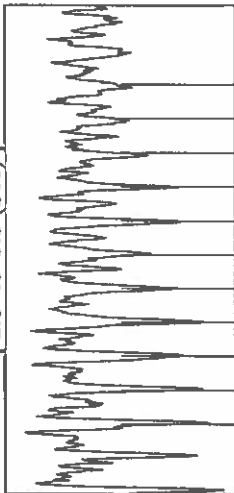
Group: Route 3 Well: GC V-2 (acquired on: 05/18/22 11:45:54 )



Filter Type High Pass Automatic Collar Count Yes  
 Manual Acoustic Veloc/24.713 ft/s Manual JTS/sec 14.3678

Time 6.111 sec  
 Joints 89.8676 Jts  
 Depth 2891.94 ft

2.5 to 3.5 (Sec)



**Analysis Method: Automatic**

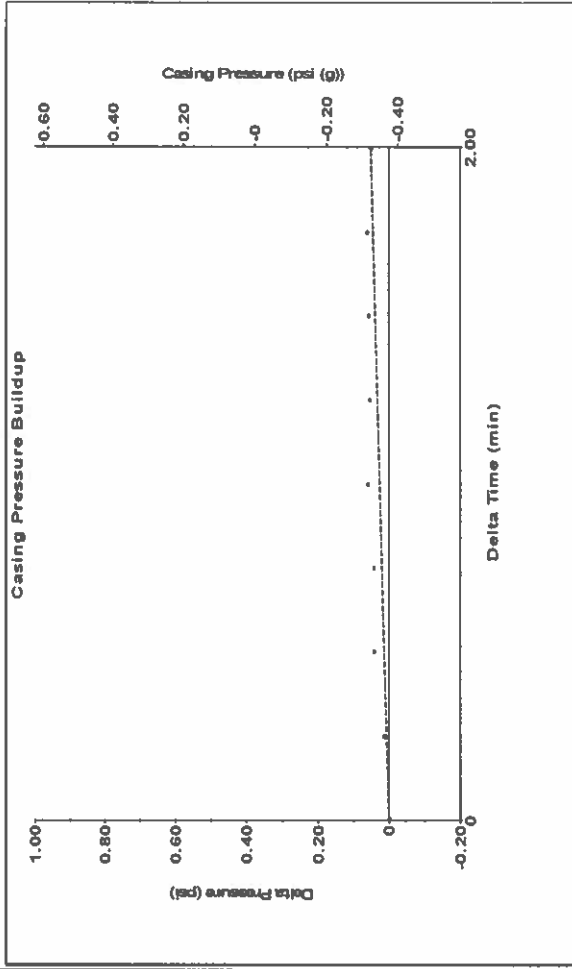
Group: Route 3 Well: GC V-2 (acquired on: 05/18/22 11:45:54 )

Production Current	Potential	Casing Pressure	Producing
Oil -*- BBL/D	-*- -0.4 psi (g)	0.051 psi	Annular
Water -*- BBL/D	2.00 min	0.051 psi	Gas Flow
Gas -*- Mscf/D	Gas/Liquid Interface Pressure	1.2 psi (g)	% Liquid
IPR Method Vogel	Liquid Level Depth	2891.94 ft	99 %
PBHP/SBHP	Pump Intake Depth	4827.00 ft	
Production Efficiency	Formation Depth	4994.00 ft	
Oil 40 deg API			
Water 1.05 Sp.Gr.H2O			
Gas 1.03 Sp.Gr.AIR			
Acoustic Velocity	946.471 ft/s		
Formation Submergence			
Total Gaseous Liquid Column HT (TVD)	1935 ft		
Equivalent Gas Free Liquid HT (TVD)	1909 ft		
Acoustic Test			



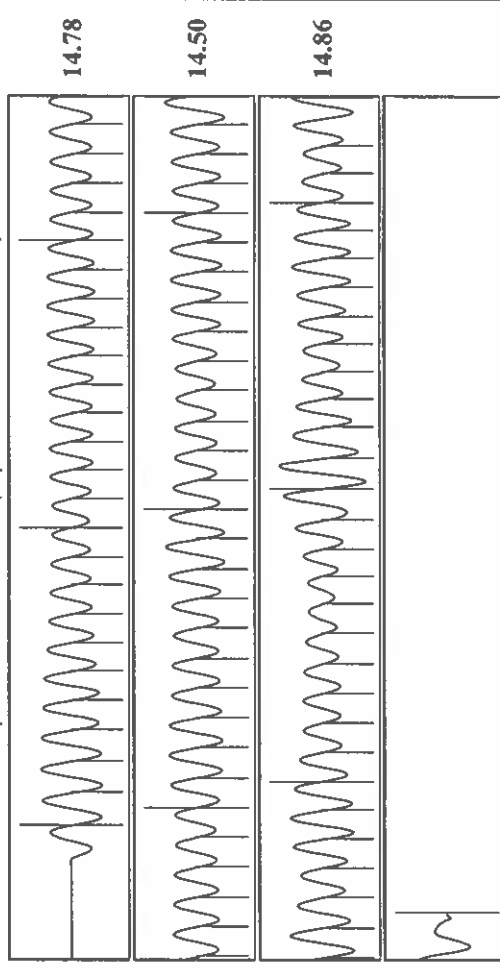
Pump Intake 639.2 psi (g)  
 Producing BHP 714.3 psi (g)  
 Static BHP - \* - psi (g)

Group: Route 3 Well: GC V-2 (acquired on: 05/18/22 11:45:54 )



Change in Pressure 0.05 psi  
 Change in Time 2.00 min  
 PT13865 Range

Group: Route 3 Well: GC V-2 (acquired on: 05/18/22 11:45:54 )



Acoustic Velocity 946.471 ft/s  
 Joints Per Second 14.7059 jts/sec  
 Depth to liquid level 2891.94 ft  
 Automatic Collar Count Yes  
 Joints counted 82  
 Joints to liquid level 89.8676  
 Filter Width 16.3678  
 Time to 1st Collar 0.312  
 5.888

Conservation Division  
District Office No. 1  
210 E. Frontview, Suite A  
Dodge City, KS 67801



Phone: 620-682-7933  
<http://kcc.ks.gov/>

Dwight D. Keen, Chair  
Susan K. Duffy, Commissioner  
Andrew J. French, Commissioner

Laura Kelly, Governor

May 25, 2022

Katherine McClurkan  
Merit Energy Company, LLC  
13727 Noel Road, Suite 1200  
Dallas, TX 75240-7362

Re: Temporary Abandonment  
API 15-055-22141-00-00  
Garden City V 2  
SW/4 Sec.27-23S-34W  
Finney County, Kansas

Dear Katherine McClurkan:

"Your temporary abandonment (TA) application for the well listed above has been approved. In accordance with K.A.R. 82-3-111 the TA status of this well will expire 05/25/2023.

- \* If you return this well to service or plug it, please notify the District Office.
- \* If you sell this well you are required to file a Transfer of Operator form, T-1.
- \* If the well will remain temporarily abandoned, you must submit a new TA application, CP-111, before 05/25/2023.

You may contact me at the number above if you have questions.

Very truly yours,

Michael Maier"