

KANSAS CORPORATION COMMISSION
OIL & GAS CONSERVATION DIVISION

TEMPORARY ABANDONMENT WELL APPLICATION

OPERATOR: License#
Name:
Address 1:
Address 2:
City: State: Zip:
Contact Person:
Phone:
Contact Person Email:
Field Contact Person:
Field Contact Person Phone:

API No. 15-
Spot Description:
Sec. Twp. S. R.
GPS Location: Lat: Long:
Datum: NAD27 NAD83 WGS84
County: Elevation:
Lease Name: Well #:
Well Type: Oil Gas OG WSW Other:
SWD Permit #: ENHR Permit #:
Gas Storage Permit #:
Spud Date: Date Shut-In:

Table with 7 columns: Conductor, Surface, Production, Intermediate, Liner, Tubing. Rows include Size, Setting Depth, Amount of Cement, Top of Cement, Bottom of Cement.

Casing Fluid Level from Surface: How Determined? Date:
Casing Squeeze(s): to w / sacks of cement, to w / sacks of cement. Date:
Do you have a valid Oil & Gas Lease? Yes No
Depth and Type: Junk in Hole at Tools in Hole at Casing Leaks: Yes No Depth of casing leak(s):
Type Completion: ALT. I ALT. II Depth of: DV Tool: w / sacks of cement Port Collar: w / sack of cement
Packer Type: Size: Inch Set at: Feet
Total Depth: Plug Back Depth: Plug Back Method:

Geological Data:

Table with 4 columns: Formation Name, Formation Top, Formation Base, Completion Information. Rows 1 and 2.

UNDER PENALTY OF PERJURY I HEREBY ATTEST THAT THE INFORMATION CONTAINED HEREIN IS TRUE AND CORRECT TO THE BEST OF MY KNOWLEDGE

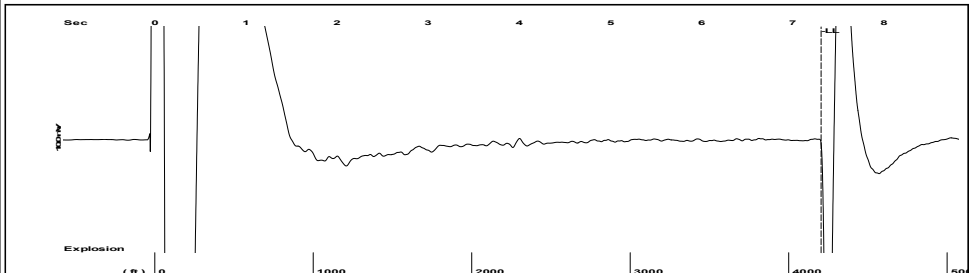
Submitted Electronically

Do NOT Write in This Space - KCC USE ONLY
Date Tested: Results: Date Plugged: Date Repaired: Date Put Back in Service:
Review Completed by: Comments:
TA Approved: Yes Denied Date:

Mail to the Appropriate KCC Conservation Office:

Table with 3 columns: District Office, Address, Phone. Rows for District Office #1, #2, #3, #4.

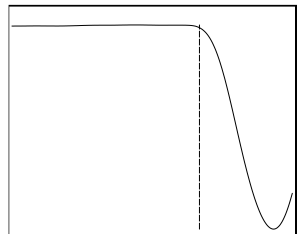
Group: Kansas Well: Robbins trust 2-26 (acquired on: 05/31/22 15:48:12)



Time 7.312 sec
 Joints 137.219 Jts
 Depth 4204.40 ft

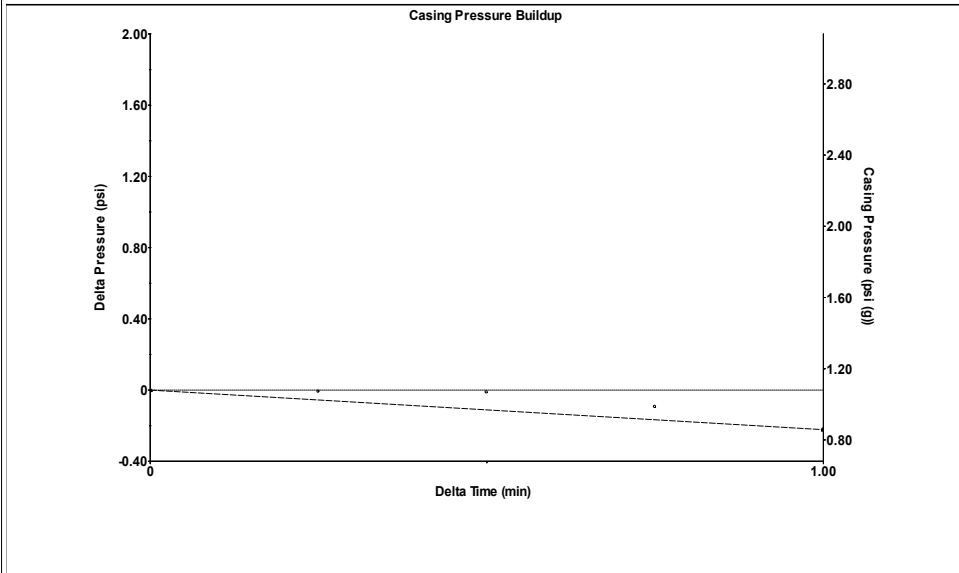
Liquid level calculated with user supplied Acoustic Velocity

Acoustic Velocity 1150 ft/s



Analysis Method: Acoustic Velocity

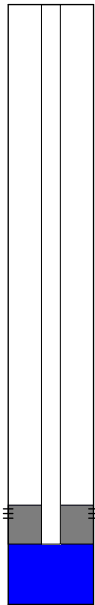
Group: Kansas Well: Robbins trust 2-26 (acquired on: 05/31/22 15:48:12)



Change in Pressure -0.22 psi PT 18318
 Change in Time 1.00 min Range 0 - ? psi

Group: Kansas Well: Robbins trust 2-26 (acquired on: 05/31/22 15:48:12)

Production Current	Potential	Casing Pressure	Producing
Oil - * -	- * - BBL/D	1.1 psi (g)	
Water - * -	- * - BBL/D	Casing Pressure Buildup	Annular Gas Flow
Gas - * -	- * - Mscf/D	-0.223 psi	0 Mscf/D
		1.00 min	% Liquid
IPR Method	Vogel	Gas/Liquid Interface Pressure	100 %
PBHP/SBHP	- * -	3.1 psi (g)	
Production Efficiency	0.0		
Oil 40 deg.API		Liquid Level Depth	
Water 1.05 Sp.Gr.H2O		4204.40 ft	
Gas 0.85 Sp.Gr.AIR		Pump Intake Depth	
		4579.00 ft	
Acoustic Velocity 1150 ft/s		Formation Depth	
		4284.00 ft	
Formation Submergence			Pump Intake
Total Gaseous Liquid Column HT (TVD)	375 ft		130.2 psi (g)
Equivalent Gas Free Liquid HT (TVD)	375 ft		Producing BHP
			30.2 psi (g)
			Static BHP
			- * - psi (g)
Acoustic Test			



Group: Kansas Well: Robbins trust 2-26 (acquired on: 05/31/22 15:48:12)

Entered Acoustic Velocity for Liquid Level depth determination

Conservation Division
District Office No. 1
210 E. Frontview, Suite A
Dodge City, KS 67801



Phone: 620-682-7933
<http://kcc.ks.gov/>

Dwight D. Keen, Chair
Susan K. Duffy, Commissioner
Andrew J. French, Commissioner

Laura Kelly, Governor

June 01, 2022

Jeff Scarbrough
Shakespeare Oil Co., Inc.
202 W MAIN ST
SALEM, IL 62881-1519

Re: Temporary Abandonment
API 15-101-22059-00-00
ROBBINS TRUST 2-26
SW/4 Sec.26-18S-29W
Lane County, Kansas

Dear Jeff Scarbrough:

"Your temporary abandonment (TA) application for the well listed above has been approved. In accordance with K.A.R. 82-3-111 the TA status of this well will expire 06/01/2023.

- * If you return this well to service or plug it, please notify the District Office.
- * If you sell this well you are required to file a Transfer of Operator form, T-1.
- * If the well will remain temporarily abandoned, you must submit a new TA application, CP-111, before 06/01/2023.

You may contact me at the number above if you have questions.

Very truly yours,

Michael Maier"