

KANSAS CORPORATION COMMISSION
OIL & GAS CONSERVATION DIVISION

TEMPORARY ABANDONMENT WELL APPLICATION

OPERATOR: License#
Name:
Address 1:
Address 2:
City: State: Zip:
Contact Person:
Phone:
Contact Person Email:
Field Contact Person:
Field Contact Person Phone:

API No. 15-
Spot Description:
Sec. Twp. S. R.
GPS Location: Lat: Long:
Datum: NAD27 NAD83 WGS84
County: Elevation:
Lease Name: Well #:
Well Type: Oil Gas OG WSW Other:
SWD Permit #: ENHR Permit #:
Gas Storage Permit #:
Spud Date: Date Shut-In:

Table with 7 columns: Conductor, Surface, Production, Intermediate, Liner, Tubing. Rows include Size, Setting Depth, Amount of Cement, Top of Cement, Bottom of Cement.

Casing Fluid Level from Surface: How Determined? Date:
Casing Squeeze(s): to w / sacks of cement, to w / sacks of cement. Date:
Do you have a valid Oil & Gas Lease? Yes No
Depth and Type: Junk in Hole at Tools in Hole at Casing Leaks: Yes No Depth of casing leak(s):
Type Completion: ALT. I ALT. II Depth of: DV Tool: w / sacks of cement Port Collar: w / sack of cement
Packer Type: Size: Inch Set at: Feet
Total Depth: Plug Back Depth: Plug Back Method:

Geological Data:

Table with 4 columns: Formation Name, Formation Top, Formation Base, Completion Information. Rows 1 and 2.

UNDER PENALTY OF PERJURY I HEREBY ATTEST THAT THE INFORMATION CONTAINED HEREIN IS TRUE AND CORRECT TO THE BEST OF MY KNOWLEDGE

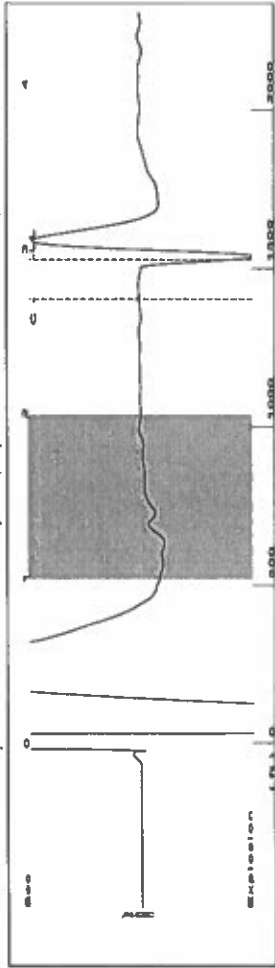
Submitted Electronically

Do NOT Write in This Space - KCC USE ONLY
Date Tested: Results: Date Plugged: Date Repaired: Date Put Back in Service:
Review Completed by: Comments:
TA Approved: Yes Denied Date:

Mail to the Appropriate KCC Conservation Office:

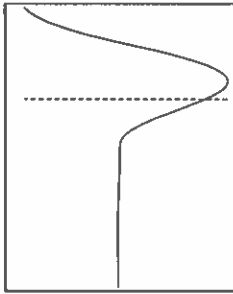
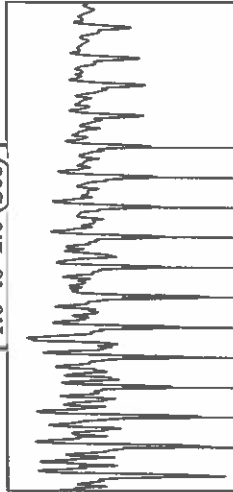
Table with 3 columns: District Office, Address, Phone. Rows for District Office #1, #2, #3, #4.

Group: TAD Well: Garden City T-1 (acquired on: 05/26/22 12:08:19)

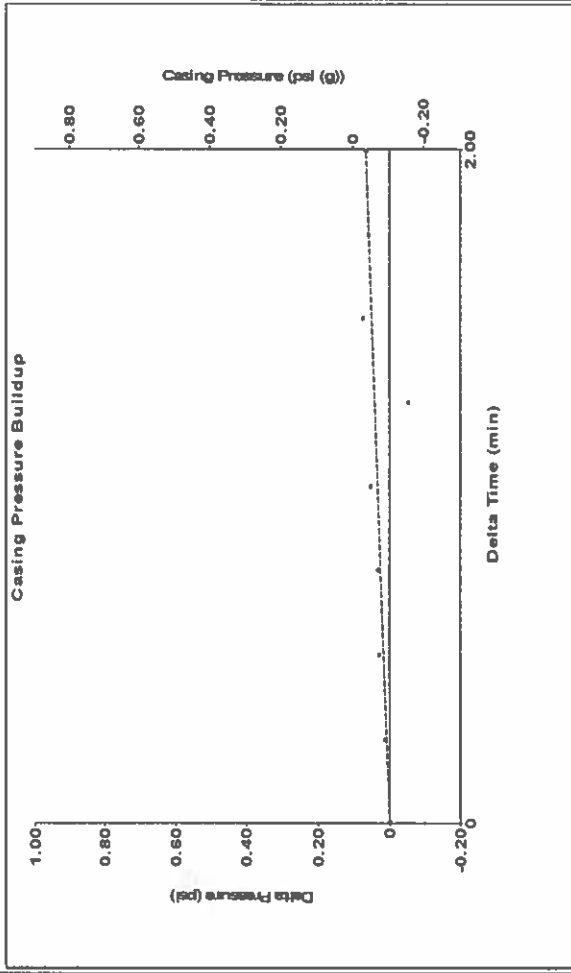


Filter Type High Pass Automatic Collar Count Yes
 Manual Acoustic Veloc 030.89 f/s Manual JTS/sec 16.2602
 Time 2.934 sec
 Joints 48.1773 Jts
 Depth 1527.22 ft

1.0 to 2.0 (Sec)



Group: TAD Well: Garden City T-1 (acquired on: 05/26/22 12:08:19)



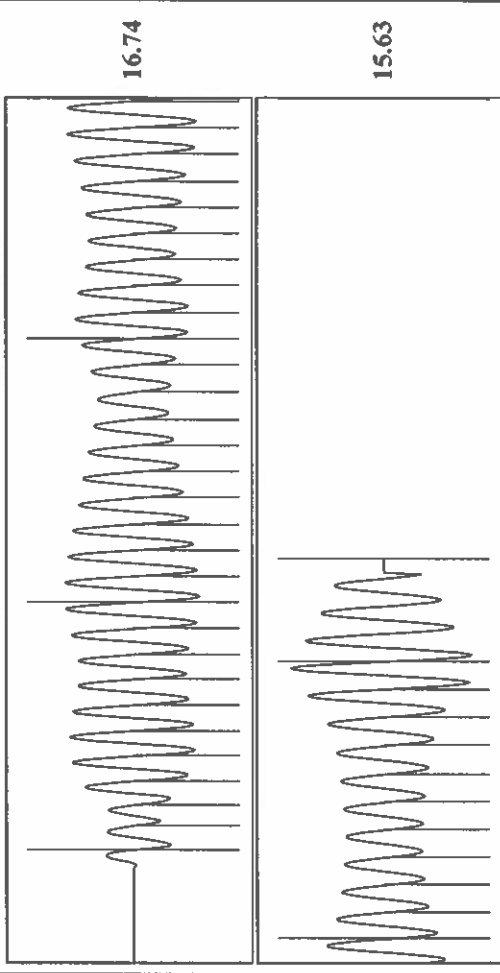
Change in Pressure 0.07 psi
 Change in Time 2.00 min
 PFI 3865 Range

Analysis Method: Automatic

Group: TAD Well: Garden City T-1 (acquired on: 05/26/22 12:08:19)

Production	Potential	Casing Pressure	Producing
Oil - * -	- * - BBL/D	-0.1 psi (g)	Annular
Water - * -	- * - BBL/D	0.066 psi	Gas Flow 0 Mscf/D
Gas - * -	- * - Mscf/D	2.00 min	% Liquid 100 %
IPR Method	Vogel	Gas/Liquid Interface Pressure	Pump Intake
PBHP/SBHP	- * -	0.6 psi (g)	1067.4 psi (g)
Production Efficiency	0.0	Liquid Level Depth	Producing BHP
Oil 40 deg API		1527.22 ft	947.5 psi (g)
Water 1.05 Sp.Gr.H2O		Pump Intake Depth	Static BHP
Gas 0.93 Sp.Gr.AIR		4799.00 ft	- * - psi (g)
Acoustic Velocity	1041.05 f/s	Formation Depth	
		4406.00 ft	
Formation Submergence			
Total Gaseous Liquid Column HT (TVD)		3272 ft	
Equivalent Gas Free Liquid HT (TVD)		3272 ft	
Acoustic Test			

Group: TAD Well: Garden City T-1 (acquired on: 05/26/22 12:08:19)



Acoustic Velocity 1041.05 f/s
 Joints Per Second 16.4204 Jts/sec
 Depth to liquid level 1527.22 ft
 Automatic Collar Count Yes
 Joints counted 40
 Joints to liquid level 48.1773
 Filter Width 14.2602
 Time to 1st Collar 18.2602 2.696

June 01, 2022

Katherine McClurkan
Merit Energy Company, LLC
13727 Noel Road, Suite 1200
Dallas, TX 75240

Re: Temporary Abandonment
API 15-055-21686-00-00
Garden City T 1
NW/4 Sec.29-23S-34W
Finney County, Kansas

Dear Katherine McClurkan:

"Your temporary abandonment (TA) application for the well listed above has been approved. In accordance with K.A.R. 82-3-111 the TA status of this well will expire 06/01/2023.

- * If you return this well to service or plug it, please notify the District Office.
- * If you sell this well you are required to file a Transfer of Operator form, T-1.
- * If the well will remain temporarily abandoned, you must submit a new TA application, CP-111, before 06/01/2023.

You may contact me at the number above if you have questions.

Very truly yours,

Michael Maier"