

KANSAS CORPORATION COMMISSION  
OIL & GAS CONSERVATION DIVISION

TEMPORARY ABANDONMENT WELL APPLICATION

OPERATOR: License# \_\_\_\_\_  
 Name: \_\_\_\_\_  
 Address 1: \_\_\_\_\_  
 Address 2: \_\_\_\_\_  
 City: \_\_\_\_\_ State: \_\_\_\_\_ Zip: \_\_\_\_\_ + \_\_\_\_\_  
 Contact Person: \_\_\_\_\_  
 Phone: ( \_\_\_\_\_ ) \_\_\_\_\_  
 Contact Person Email: \_\_\_\_\_  
 Field Contact Person: \_\_\_\_\_  
 Field Contact Person Phone: ( \_\_\_\_\_ ) \_\_\_\_\_

API No. 15- \_\_\_\_\_  
 Spot Description: \_\_\_\_\_  
 \_\_\_\_\_ - \_\_\_\_\_ - \_\_\_\_\_ - \_\_\_\_\_ Sec. \_\_\_\_\_ Twp. \_\_\_\_\_ S. R. \_\_\_\_\_  E  W  
 \_\_\_\_\_ feet from  N /  S Line of Section  
 \_\_\_\_\_ feet from  E /  W Line of Section  
 GPS Location: Lat: \_\_\_\_\_, Long: \_\_\_\_\_  
(e.g. xx.xxxxx) (e.g. -xxx.xxxxx)  
 Datum:  NAD27  NAD83  WGS84  
 County: \_\_\_\_\_ Elevation: \_\_\_\_\_  GL  KB  
 Lease Name: \_\_\_\_\_ Well #: \_\_\_\_\_  
 Well Type: (check one)  Oil  Gas  OG  WSW  Other: \_\_\_\_\_  
 SWD Permit #: \_\_\_\_\_  ENHR Permit #: \_\_\_\_\_  
 Gas Storage Permit #: \_\_\_\_\_  
 Spud Date: \_\_\_\_\_ Date Shut-In: \_\_\_\_\_

	Conductor	Surface	Production	Intermediate	Liner	Tubing
Size						
Setting Depth						
Amount of Cement						
Top of Cement						
Bottom of Cement						

Casing Fluid Level from Surface: \_\_\_\_\_ How Determined? \_\_\_\_\_ Date: \_\_\_\_\_  
 Casing Squeeze(s): \_\_\_\_\_ to \_\_\_\_\_ w / \_\_\_\_\_ sacks of cement, \_\_\_\_\_ to \_\_\_\_\_ w / \_\_\_\_\_ sacks of cement. Date: \_\_\_\_\_  
(top) (bottom) (top) (bottom)  
 Do you have a valid Oil & Gas Lease?  Yes  No  
 Depth and Type:  Junk in Hole at \_\_\_\_\_  Tools in Hole at \_\_\_\_\_ Casing Leaks:  Yes  No Depth of casing leak(s): \_\_\_\_\_  
(depth) (depth)  
 Type Completion:  ALT. I  ALT. II Depth of:  DV Tool: \_\_\_\_\_ w / \_\_\_\_\_ sacks of cement  Port Collar: \_\_\_\_\_ w / \_\_\_\_\_ sack of cement  
(depth) (depth)  
 Packer Type: \_\_\_\_\_ Size: \_\_\_\_\_ Inch Set at: \_\_\_\_\_ Feet  
 Total Depth: \_\_\_\_\_ Plug Back Depth: \_\_\_\_\_ Plug Back Method: \_\_\_\_\_

**Geological Data:**

Formation Name	Formation Top	Formation Base	Completion Information
1. _____	At: _____	to _____ Feet	Perforation Interval _____ to _____ Feet or Open Hole Interval _____ to _____ Feet
2. _____	At: _____	to _____ Feet	Perforation Interval _____ to _____ Feet or Open Hole Interval _____ to _____ Feet

UNDER PENALTY OF PERJURY I HEREBY ATTEST THAT THE INFORMATION CONTAINED HEREIN IS TRUE AND CORRECT TO THE BEST OF MY KNOWLEDGE

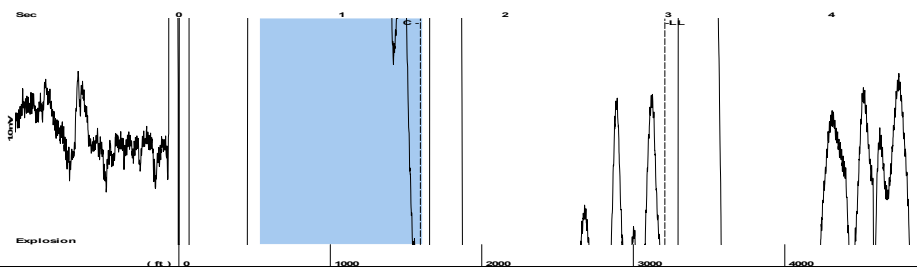
Submitted Electronically

<b>Do NOT Write in This Space - KCC USE ONLY</b>	Date Tested: _____	Results: _____	Date Plugged: _____	Date Repaired: _____	Date Put Back in Service: _____
	Review Completed by: _____ Comments: _____				
TA Approved: <input type="checkbox"/> Yes <input type="checkbox"/> Denied Date: _____					

Mail to the Appropriate KCC Conservation Office:

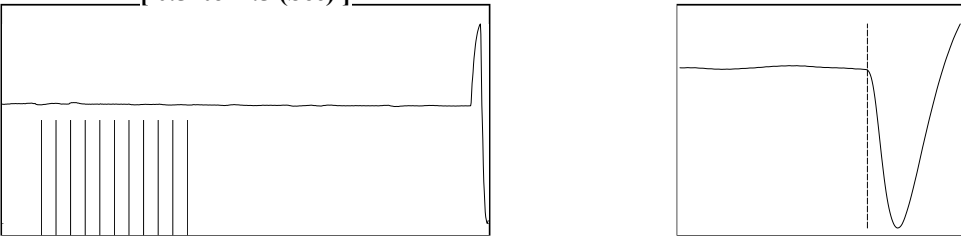
	KCC District Office #1 - 210 E. Frontview, Suite A, Dodge City, KS 67801	Phone 620.682.7933
	KCC District Office #2 - 3450 N. Rock Road, Building 600, Suite 601, Wichita, KS 67226	Phone 316.337.7400
	KCC District Office #3 - 137 E. 21st St., Chanute, KS 66720	Phone 620.902.6450
	KCC District Office #4 - 2301 E. 13th Street, Hays, KS 67601-2651	Phone 785.261.6250

Group: MyWells Well: SEACAT # 8 (acquired on: 06/02/22 13:33:24)



Filter Type High Pass Automatic Collar Count Yes Time 2.978 sec  
 Manual Acoustic Veloc 2113.33 ft/s Manual JTS/sec 33.3333 Joints 101.194 Jts  
 Depth 3207.86 ft

[ 0.5 to 1.5 (Sec) ]



Analysis Method: Automatic

Group: MyWells Well: SEACAT # 8 (acquired on: 06/02/22 13:33:24)

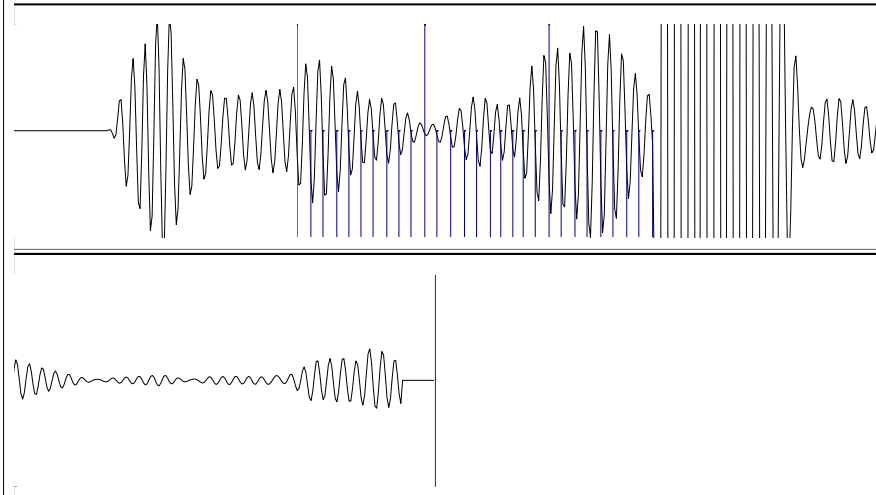
NO PRESSURE DATA AVAILABLE

Change in Pressure 0.00 psi NONE  
 Range 0 - ? psi  
 Change in Time 0.00 min

Group: MyWells Well: SEACAT # 8 (acquired on: 06/02/22 13:33:24)

Production	Potential	Casing Pressure	Producing
Current		0.0 psi (g)	
Oil - *-	- *- BBL/D	Casing Pressure Buildup	Annular Gas Flow
Water - *-	- *- BBL/D	- *- psi	- *- Mscf/D
Gas - *-	- *- Mscf/D	- *- min	% Liquid
		Gas/Liquid Interface Pressure	100 %
		- *- psi (g)	
IPR Method	Vogel	Liquid Level Depth	
PBHP/SBHP	- *-	3207.86 ft	
Production Efficiency	0.0	Pump Intake Depth	
		- *- ft	
Oil 40 deg.API		Formation Depth	
Water 1.05 Sp.Gr.H2O		6193.00 ft	
Gas 0.55 Sp.Gr.AIR			
Acoustic Velocity	2154.37 ft/s		
		Pump Intake	
		- *- psi (g)	
		Producing BHP	
		- *- psi (g)	
		Static BHP	
		- *- psi (g)	
Formation Submergence			
Total Gaseous Liquid Column HT (TVD)	- *- ft		
Equivalent Gas Free Liquid HT (TVD)	- *- ft		
Acoustic Test			

Group: MyWells Well: SEACAT # 8 (acquired on: 06/02/22 13:33:24)



Acoustic Velocity	2154.37 ft/s	Joints counted	28
Joints Per Second	33.9806 jts/sec	Joints to liquid level	101.194
Depth to liquid level	3207.86 ft	Filter Width	31.3333 35.3333
Automatic Collar Count	Yes	Time to 1st Collar	0.656 1.48

Conservation Division  
District Office No. 1  
210 E. Frontview, Suite A  
Dodge City, KS 67801



Phone: 620-682-7933  
<http://kcc.ks.gov/>

Dwight D. Keen, Chair  
Susan K. Duffy, Commissioner  
Andrew J. French, Commissioner

Laura Kelly, Governor

June 08, 2022

Jose Reyes  
American Warrior, Inc.  
PO BOX 399  
GARDEN CITY, KS 67846-0399

Re: Temporary Abandonment  
API 15-025-21238-00-00  
SEACAT 8  
SW/4 Sec.19-31S-21W  
Clark County, Kansas

Dear Jose Reyes:

"Your temporary abandonment (TA) application for the well listed above has been approved. In accordance with K.A.R. 82-3-111 the TA status of this well will expire 06/08/2023.

- \* If you return this well to service or plug it, please notify the District Office.
- \* If you sell this well you are required to file a Transfer of Operator form, T-1.
- \* If the well will remain temporarily abandoned, you must submit a new TA application, CP-111, before 06/08/2023.

You may contact me at the number above if you have questions.

Very truly yours,

Michael Maier"