

KANSAS CORPORATION COMMISSION
OIL & GAS CONSERVATION DIVISION

TEMPORARY ABANDONMENT WELL APPLICATION

OPERATOR: License#
Name:
Address 1:
Address 2:
City: State: Zip:
Contact Person:
Phone:
Contact Person Email:
Field Contact Person:
Field Contact Person Phone:

API No. 15-
Spot Description:
Sec. Twp. S. R.
feet from N / S Line of Section
feet from E / W Line of Section
GPS Location: Lat: , Long:
Datum: NAD27 NAD83 WGS84
County: Elevation: GL KB
Lease Name: Well #:
Well Type: Oil Gas OG WSW Other:
SWD Permit #: ENHR Permit #:
Gas Storage Permit #:
Spud Date: Date Shut-In:

Table with 7 columns: Conductor, Surface, Production, Intermediate, Liner, Tubing. Rows include Size, Setting Depth, Amount of Cement, Top of Cement, Bottom of Cement.

Casing Fluid Level from Surface: How Determined? Date:
Casing Squeeze(s): to w / sacks of cement, to w / sacks of cement. Date:
Do you have a valid Oil & Gas Lease? Yes No
Depth and Type: Junk in Hole at Tools in Hole at Casing Leaks: Yes No Depth of casing leak(s):
Type Completion: ALT. I ALT. II Depth of: DV Tool: w / sacks of cement Port Collar: w / sack of cement
Packer Type: Size: Inch Set at: Feet
Total Depth: Plug Back Depth: Plug Back Method:

Geological Data:

Table with 4 columns: Formation Name, Formation Top, Formation Base, Completion Information. Rows 1 and 2.

UNDER PENALTY OF PERJURY I HEREBY ATTEST THAT THE INFORMATION CONTAINED HEREIN IS TRUE AND CORRECT TO THE BEST OF MY KNOWLEDGE

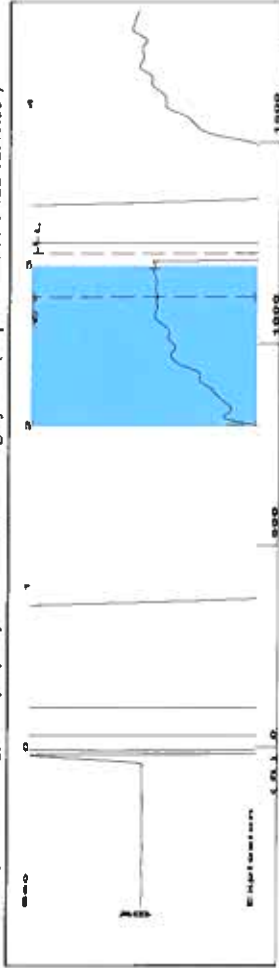
Submitted Electronically

Do NOT Write in This Space - KCC USE ONLY
Date Tested: Results: Date Plugged: Date Repaired: Date Put Back in Service:
Review Completed by: Comments:
TA Approved: Yes Denied Date:

Mail to the Appropriate KCC Conservation Office:

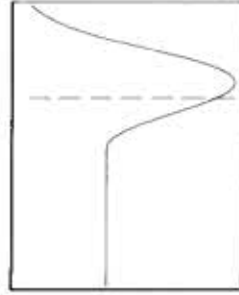
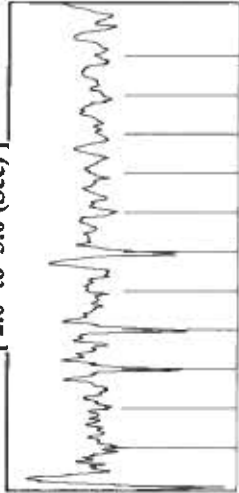
Table with 2 columns: Office Address, Phone. Rows for District Office #1, #2, #3, #4.

Group: Merit Energy Company-Ulysses Well: MLP Lighty A-1 (acquired on: 06/04/22 12:40:33 )



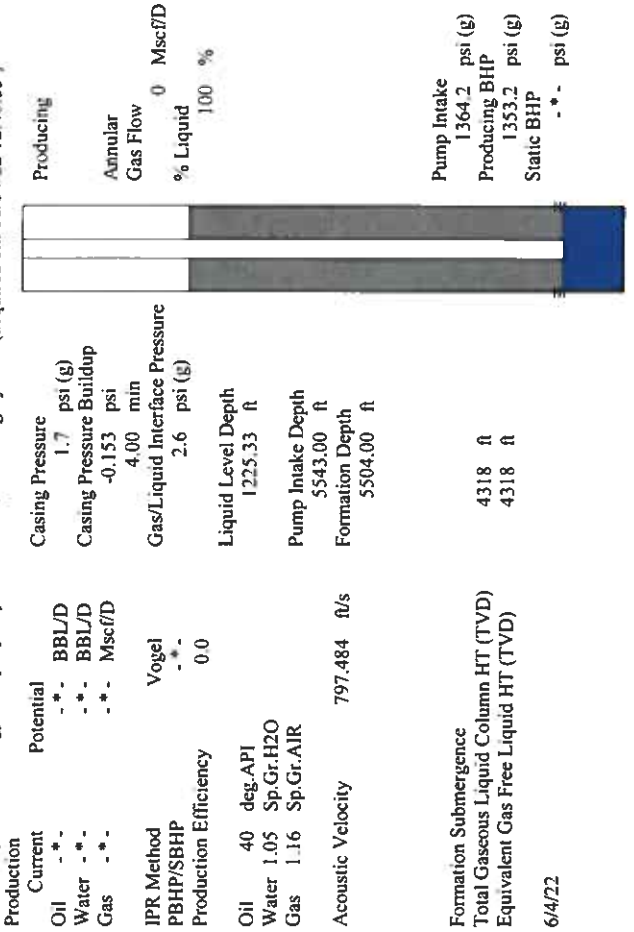
Filter Type High Pass Automatic Collar Count Yes Time 3.073 sec  
 Manual Acoustic Velo 788.557 ft/s Manual JTS/sec 12.4378  
 Joints 38.6541 Jts  
 Depth 1225.33 ft

2.0 to 3.0 (Sec) |

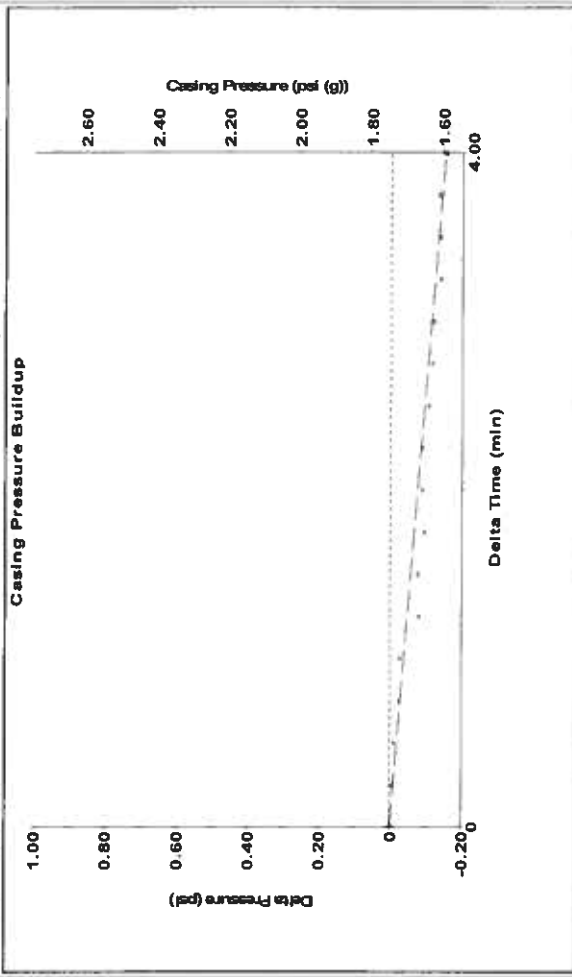


**Analysis Method: Automatic**

Group: Merit Energy Company-Ulysses Well: MLP Lighty A-1 (acquired on: 06/04/22 12:40:33 )

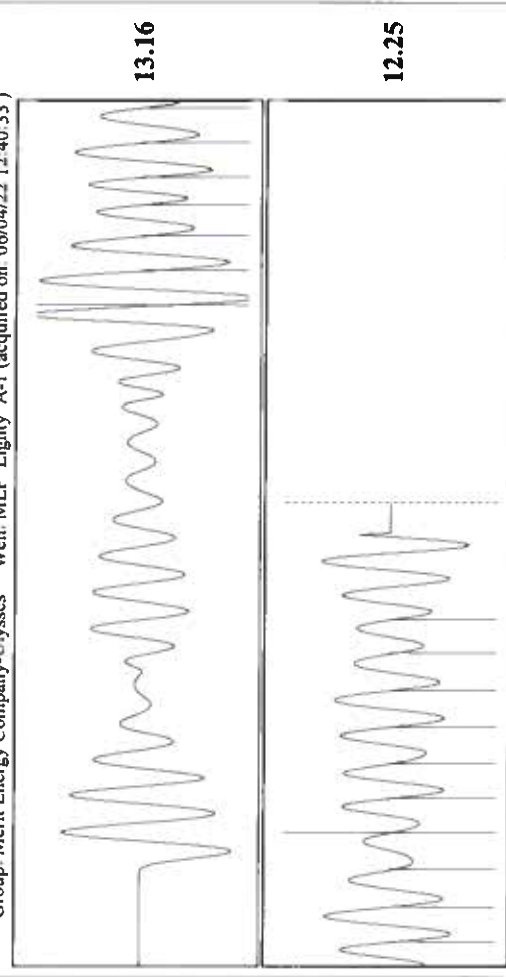


Group: Merit Energy Company-Ulysses Well: MLP Lighty A-1 (acquired on: 06/04/22 12:40:33 )



Change in Pressure -0.15 psi  
 Change in Time 4.00 min  
 PT18865 Range

Group: Merit Energy Company-Ulysses Well: MLP Lighty A-1 (acquired on: 06/04/22 12:40:33 )



Acoustic Velocity 797.484 ft/s Joints counted 16  
 Joints Per Second 12.5786 Jts/sec Joints to liquid level 38.6541  
 Depth to liquid level 1225.33 ft Filter Width 14.4378  
 Automatic Collar Count Yes Time to 1st Collar 1.528 2.8

Conservation Division  
District Office No. 1  
210 E. Frontview, Suite A  
Dodge City, KS 67801



Phone: 620-682-7933  
<http://kcc.ks.gov/>

Dwight D. Keen, Chair  
Susan K. Duffy, Commissioner  
Andrew J. French, Commissioner

Laura Kelly, Governor

June 08, 2022

Katherine McClurkan  
Merit Energy Company, LLC  
13727 Noel Road, Suite 1200  
Dallas, TX 75240-7362

Re: Temporary Abandonment  
API 15-067-21212-00-01  
MLP Light A 1  
SW/4 Sec.14-30S-35W  
Grant County, Kansas

Dear Katherine McClurkan:

"Your temporary abandonment (TA) application for the well listed above has been approved. In accordance with K.A.R. 82-3-111 the TA status of this well will expire 06/08/2023.

- \* If you return this well to service or plug it, please notify the District Office.
- \* If you sell this well you are required to file a Transfer of Operator form, T-1.
- \* If the well will remain temporarily abandoned, you must submit a new TA application, CP-111, before 06/08/2023.

You may contact me at the number above if you have questions.

Very truly yours,

Michael Maier"