

KANSAS CORPORATION COMMISSION
OIL & GAS CONSERVATION DIVISION

TEMPORARY ABANDONMENT WELL APPLICATION

OPERATOR: License#
Name:
Address 1:
Address 2:
City: State: Zip:
Contact Person:
Phone:
Contact Person Email:
Field Contact Person:
Field Contact Person Phone:

API No. 15-
Spot Description:
Sec. Twp. S. R.
GPS Location: Lat, Long
Datum: NAD27, NAD83, WGS84
County: Elevation:
Lease Name: Well #:
Well Type: Oil, Gas, OG, WSW, Other
SWD Permit #: ENHR Permit #:
Gas Storage Permit #:
Spud Date: Date Shut-In:

Table with 7 columns: Conductor, Surface, Production, Intermediate, Liner, Tubing. Rows include Size, Setting Depth, Amount of Cement, Top of Cement, Bottom of Cement.

Casing Fluid Level from Surface: How Determined? Date:
Casing Squeeze(s): to w / sacks of cement, to w / sacks of cement. Date:
Do you have a valid Oil & Gas Lease? Yes No
Depth and Type: Junk in Hole at Tools in Hole at Casing Leaks: Yes No Depth of casing leak(s):
Type Completion: ALT. I ALT. II Depth of: DV Tool: w / sacks of cement Port Collar: w / sack of cement
Packer Type: Size: Inch Set at: Feet
Total Depth: Plug Back Depth: Plug Back Method:

Geological Data:

Table with 4 columns: Formation Name, Formation Top, Formation Base, Completion Information. Rows 1 and 2.

UNDER PENALTY OF PERJURY I HEREBY ATTEST THAT THE INFORMATION CONTAINED HEREIN IS TRUE AND CORRECT TO THE BEST OF MY KNOWLEDGE

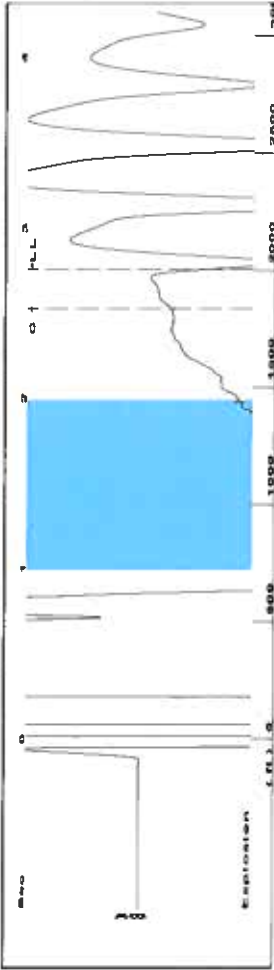
Submitted Electronically

Do NOT Write in This Space - KCC USE ONLY
Date Tested: Results: Date Plugged: Date Repaired: Date Put Back in Service:
Review Completed by: Comments:
TA Approved: Yes Denied Date:

Mail to the Appropriate KCC Conservation Office:

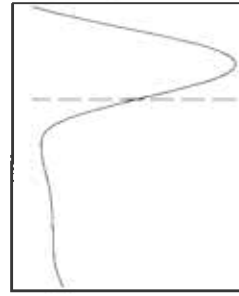
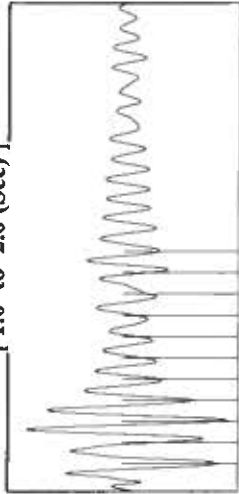
Table with 3 columns: District Office #, Address, Phone. Rows 1-4.

Group: Merit Energy Company-Ulysses Well: LBSLU 701 (acquired on: 05/31/22 10:23:59)

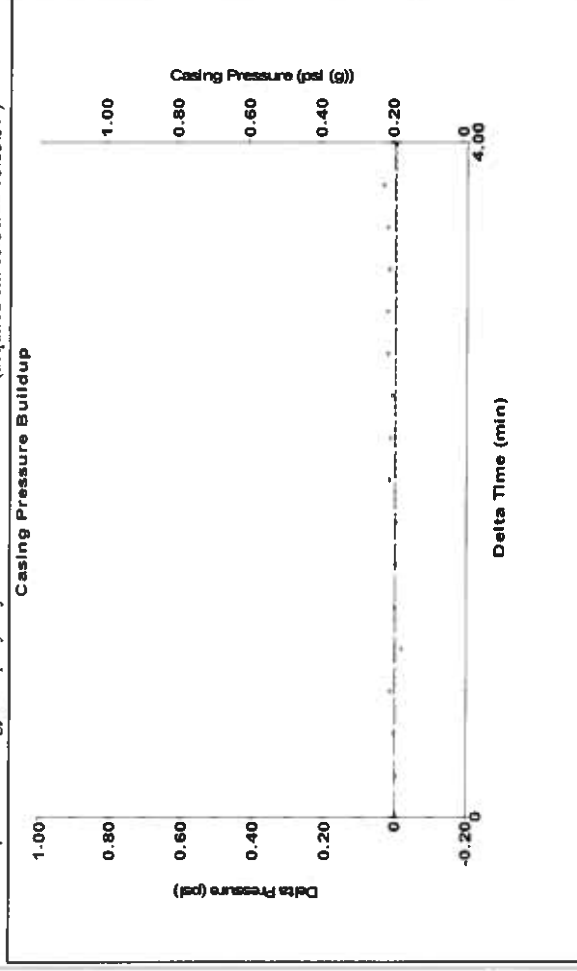


Filter Type High Pass Automatic Collar Count Yes Time 2.759 sec
 Manual Acoustic Velo 1457.47 ft/s Manual JTS/sec 22.9885 Joints 63.2947
 Depth 2006.44 ft

[1.0 to 2.0 (Sec)]



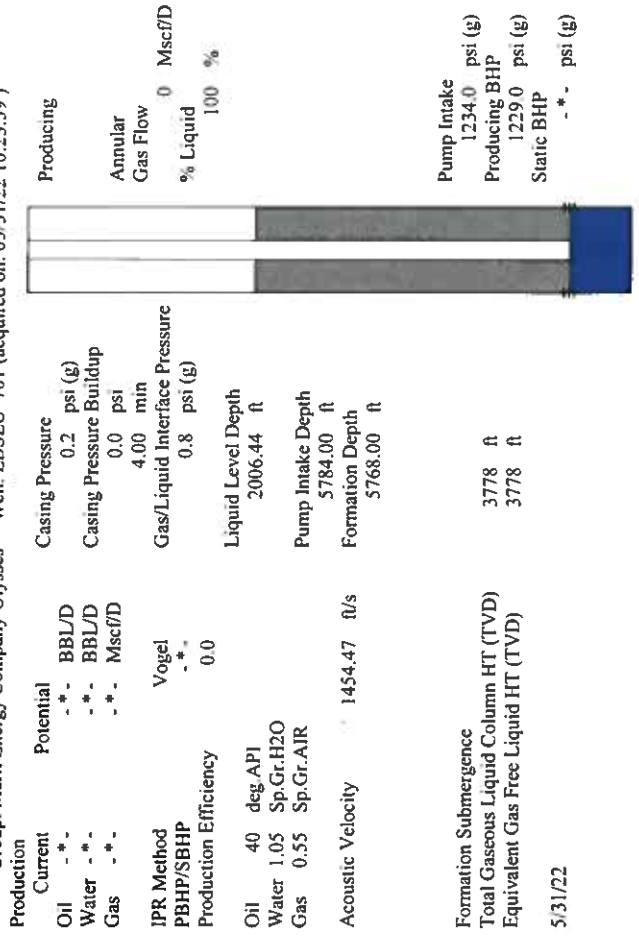
Group: Merit Energy Company-Ulysses Well: LBSLU 701 (acquired on: 05/31/22 10:23:59)



Change in Pressure 0.00 psi PTI 8865 Range
 Change in Time 4.00 min

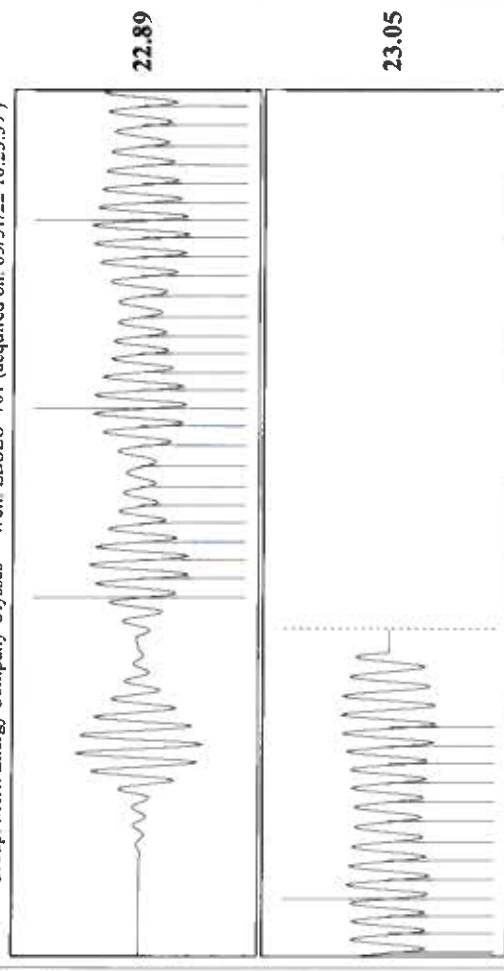
Analysis Method: Automatic

Group: Merit Energy Company-Ulysses Well: LBSLU 701 (acquired on: 05/31/22 10:23:59)



Production	Potential	Casing Pressure	0.2 psi (g)
Oil -*- BBL/D	Casing Pressure Buildup	4.00 min	
Water -*- BBL/D	Gas/Liquid Interface Pressure	0.8 psi (g)	
Gas -*- Mscf/D	Liquid Level Depth	2006.44 ft	
IPR Method Vogel	Pump Intake Depth	5784.00 ft	
PBHP/SBHP -*-	Formation Depth	5768.00 ft	
Production Efficiency 0.0	Acoustic Velocity	1454.47 ft/s	
Oil 40 deg API	Formation Submergence		
Water 1.05 Sp.Gr.H2O	Total Gaseous Liquid Column HT (TVDD)	3778 ft	
Gas 0.55 Sp.Gr.AIR	Equivalent Gas Free Liquid HT (TVDD)	3778 ft	
	5/31/22		

Group: Merit Energy Company-Ulysses Well: LBSLU 701 (acquired on: 05/31/22 10:23:59)



Acoustic Velocity 1454.47 ft/s Joints counted 39
 Joints Per Second 22.9412 JTS/sec 63.2947
 Depth to liquid level 2006.44 ft Filter Width 24.9885
 Automatic Collar Count Yes Time to 1st Collar 0.828 2.528

June 08, 2022

Katherine McClurkan
Merit Energy Company, LLC
13727 Noel Road, Suite 1200
Dallas, TX 75240

Re: Temporary Abandonment
API 15-067-21692-00-00
LBSLU 701
SW/4 Sec.17-30S-38W
Grant County, Kansas

Dear Katherine McClurkan:

"Your temporary abandonment (TA) application for the well listed above has been approved. In accordance with K.A.R. 82-3-111 the TA status of this well will expire 06/08/2023.

- * If you return this well to service or plug it, please notify the District Office.
- * If you sell this well you are required to file a Transfer of Operator form, T-1.
- * If the well will remain temporarily abandoned, you must submit a new TA application, CP-111, before 06/08/2023.

You may contact me at the number above if you have questions.

Very truly yours,

Michael Maier"