

KANSAS CORPORATION COMMISSION
OIL & GAS CONSERVATION DIVISION

TEMPORARY ABANDONMENT WELL APPLICATION

OPERATOR: License#
Name:
Address 1:
Address 2:
City: State: Zip:
Contact Person:
Phone:
Contact Person Email:
Field Contact Person:
Field Contact Person Phone:

API No. 15-
Spot Description:
Sec. Twp. S. R.
GPS Location: Lat: Long:
Datum: NAD27 NAD83 WGS84
County: Elevation:
Lease Name: Well #:
Well Type: Oil Gas OG WSW Other:
SWD Permit #: ENHR Permit #:
Gas Storage Permit #:
Spud Date: Date Shut-In:

Table with 7 columns: Conductor, Surface, Production, Intermediate, Liner, Tubing. Rows include Size, Setting Depth, Amount of Cement, Top of Cement, Bottom of Cement.

Casing Fluid Level from Surface: How Determined? Date:
Casing Squeeze(s): to w / sacks of cement, to w / sacks of cement. Date:
Do you have a valid Oil & Gas Lease? Yes No
Depth and Type: Junk in Hole at Tools in Hole at Casing Leaks: Yes No Depth of casing leak(s):
Type Completion: ALT. I ALT. II Depth of: DV Tool: w / sacks of cement Port Collar: w / sack of cement
Packer Type: Size: Inch Set at: Feet
Total Depth: Plug Back Depth: Plug Back Method:

Geological Data:

Table with 4 columns: Formation Name, Formation Top, Formation Base, Completion Information. Rows 1 and 2.

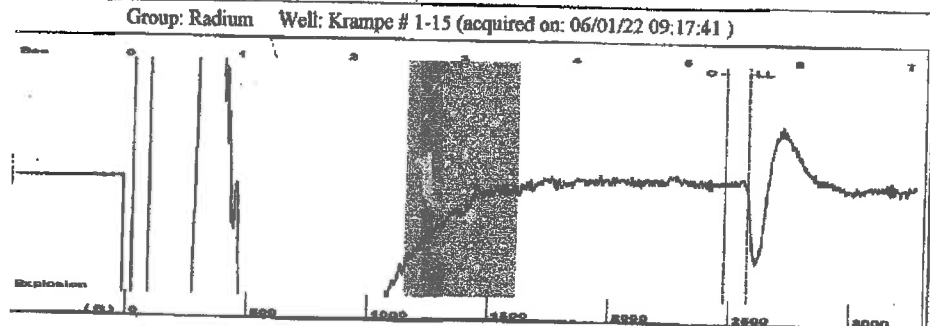
UNDER PENALTY OF PERJURY I HEREBY ATTEST THAT THE INFORMATION CONTAINED HEREIN IS TRUE AND CORRECT TO THE BEST OF MY KNOWLEDGE

Submitted Electronically

Do NOT Write in This Space - KCC USE ONLY
Date Tested: Results: Date Plugged: Date Repaired: Date Put Back in Service:
Review Completed by: Comments:
TA Approved: Yes Denied Date:

Mail to the Appropriate KCC Conservation Office:

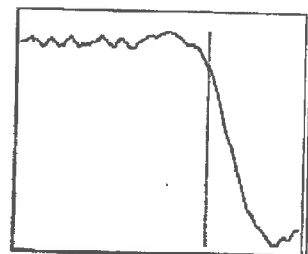
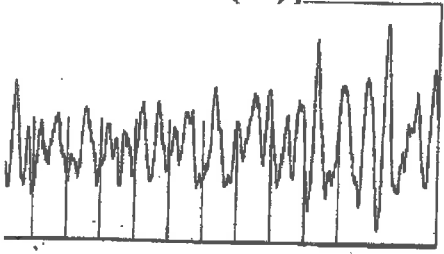
Table with 2 columns: Office Address, Phone. Rows for District Office #1, #2, #3, #4.



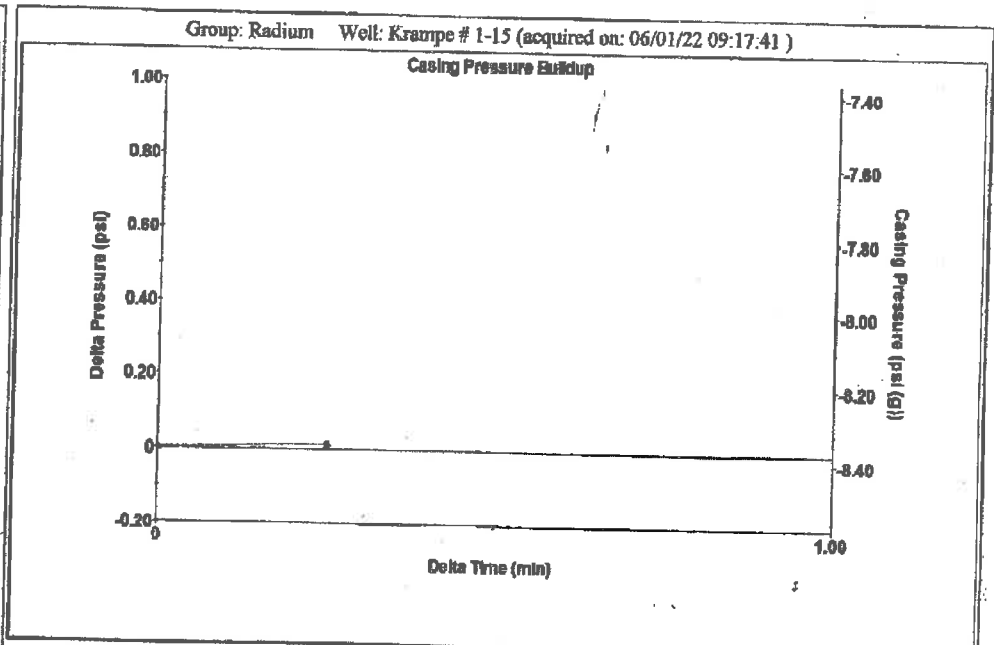
Group: Radium Well: Krampe # 1-15 (acquired on: 06/01/22 09:17:41 )

Type	High Pass	Automatic Collar Count	Yes	Time	5.56 sec
al Acoustic Velocity	902.882 ft/s	Manual JTS/sec	14.4092	Joints	82.0866 Jts
				Depth	2571.77 ft

[ 2.5 to 3.5 (Sec) ]



Analysis Method: Automatic



Change in Pressure	0.01 psi	PT13440
Change in Time	0.25 min	Range 0 - ? psi

Group: Radium Well: Krampe # 1-15 (acquired on: 06/01/22 09:17:41 )

Current	Potential	Casing Pressure	-8.4 psi (g)	Producing
..	.. BBL/D	Casing Pressure Buildup	0.0 psi	Annular Gas Flow
..	.. BBL/D		0.25 min	1 Mscf/D
..	.. Mscf/D	Gas/Liquid Interface Pressure	-7.8 psi (g)	% Liquid
				96 %

Method	Vogel	Liquid Level Depth	2571.77 ft
P/SBHP	..	Pump Intake Depth	3760.00 ft
action Efficiency	0.0	Formation Depth	3713.00 ft

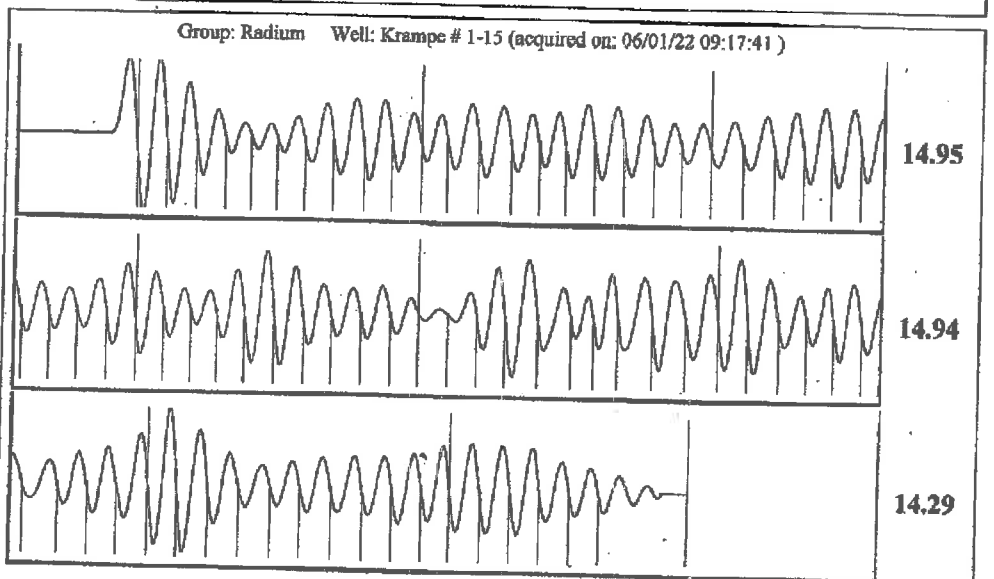
40 deg API		Pump Intake	378.8 psi (g)
r 1.05 Sp.Gr.H2O		Producing BHP	363.3 psi (g)
1.05 Sp.Gr.AIR		Static BHP	.. psi (g)

Static Velocity	925.098 ft/s	Gas/Liquid Column HT (TVD)	1188 ft
		valent Gas Free Liquid HT (TVD)	1139 ft

Static Test



Acoustic Velocity	925.098 ft/s	Joints counted	75
Joints Per Second	14.7638 jts/sec	Joints to liquid level	82.0866
Depth to liquid level	2571.77 ft	Filter Width	12.4092
Automatic Collar Count	Yes	Time to 1st Collar	0.276

June 13, 2022

Loveness Mpanje  
F. G. Holl Company L.L.C.  
9431 E CENTRAL STE 100  
WICHITA, KS 67206-2563

Re: Temporary Abandonment  
API 15-185-23160-00-02  
KRAMPE OWWO 1-15  
SW/4 Sec.15-21S-14W  
Stafford County, Kansas

Dear Loveness Mpanje:

"Your temporary abandonment (TA) application for the well listed above has been approved. In accordance with K.A.R. 82-3-111 the TA status of this well will expire 06/13/2023.

- \* If you return this well to service or plug it, please notify the District Office.
- \* If you sell this well you are required to file a Transfer of Operator form, T-1.
- \* If the well will remain temporarily abandoned, you must submit a new TA application, CP-111, before 06/13/2023.

You may contact me at the number above if you have questions.

Very truly yours,

Michael Maier"