

KANSAS CORPORATION COMMISSION
OIL & GAS CONSERVATION DIVISION

TEMPORARY ABANDONMENT WELL APPLICATION

OPERATOR: License# \_\_\_\_\_
Name: \_\_\_\_\_
Address 1: \_\_\_\_\_
Address 2: \_\_\_\_\_
City: \_\_\_\_\_ State: \_\_\_\_\_ Zip: \_\_\_\_\_ + \_\_\_\_\_
Contact Person: \_\_\_\_\_
Phone:( \_\_\_\_\_ ) \_\_\_\_\_
Contact Person Email: \_\_\_\_\_
Field Contact Person: \_\_\_\_\_
Field Contact Person Phone: ( \_\_\_\_\_ ) \_\_\_\_\_

API No. 15- \_\_\_\_\_
Spot Description: \_\_\_\_\_
Sec. \_\_\_\_\_ Twp. \_\_\_\_\_ S. R. \_\_\_\_\_ E \_\_\_\_\_ W \_\_\_\_\_
feet from \_\_\_\_\_ N / \_\_\_\_\_ S Line of Section
feet from \_\_\_\_\_ E / \_\_\_\_\_ W Line of Section
GPS Location: Lat: \_\_\_\_\_, Long: \_\_\_\_\_
Datum: \_\_\_\_\_ NAD27 \_\_\_\_\_ NAD83 \_\_\_\_\_ WGS84
County: \_\_\_\_\_ Elevation: \_\_\_\_\_ GL \_\_\_\_\_ KB
Lease Name: \_\_\_\_\_ Well #: \_\_\_\_\_
Well Type: (check one) \_\_\_\_\_ Oil \_\_\_\_\_ Gas \_\_\_\_\_ OG \_\_\_\_\_ WSW \_\_\_\_\_ Other: \_\_\_\_\_
\_\_\_\_\_ SWD Permit #: \_\_\_\_\_ ENHR Permit #: \_\_\_\_\_
\_\_\_\_\_ Gas Storage Permit #: \_\_\_\_\_
Spud Date: \_\_\_\_\_ Date Shut-In: \_\_\_\_\_

Table with 7 columns: Conductor, Surface, Production, Intermediate, Liner, Tubing. Rows include Size, Setting Depth, Amount of Cement, Top of Cement, Bottom of Cement.

Casing Fluid Level from Surface: \_\_\_\_\_ How Determined? \_\_\_\_\_ Date: \_\_\_\_\_
Casing Squeeze(s): \_\_\_\_\_ to \_\_\_\_\_ w / \_\_\_\_\_ sacks of cement, \_\_\_\_\_ to \_\_\_\_\_ w / \_\_\_\_\_ sacks of cement. Date: \_\_\_\_\_
Do you have a valid Oil & Gas Lease? \_\_\_\_\_ Yes \_\_\_\_\_ No
Depth and Type: \_\_\_\_\_ Junk in Hole at \_\_\_\_\_ Tools in Hole at \_\_\_\_\_ Casing Leaks: \_\_\_\_\_ Yes \_\_\_\_\_ No Depth of casing leak(s): \_\_\_\_\_
Type Completion: \_\_\_\_\_ ALT. I \_\_\_\_\_ ALT. II Depth of: \_\_\_\_\_ DV Tool: \_\_\_\_\_ w / \_\_\_\_\_ sacks of cement \_\_\_\_\_ Port Collar: \_\_\_\_\_ w / \_\_\_\_\_ sack of cement
Packer Type: \_\_\_\_\_ Size: \_\_\_\_\_ Inch Set at: \_\_\_\_\_ Feet
Total Depth: \_\_\_\_\_ Plug Back Depth: \_\_\_\_\_ Plug Back Method: \_\_\_\_\_

Geological Date:

Table with 4 columns: Formation Name, Formation Top, Formation Base, Completion Information. Rows 1 and 2.

UNDER PENALTY OF PERJURY I HEREBY ATTEST THAT THE INFORMATION CONTAINED HEREIN IS TRUE AND CORRECT TO THE BEST OF MY KNOWLEDGE

Submitted Electronically

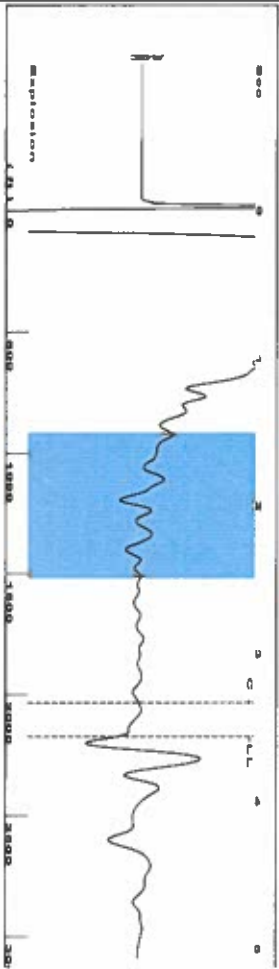
Form with fields: Do NOT Write in This Space - KCC USE ONLY, Date Tested, Results, Date Plugged, Date Repaired, Date Put Back in Service, Review Completed by, Comments, TA Approved (Yes/No), Date.

Mail to the Appropriate KCC Conservation Office:

Table with 3 columns: District Office #, Address, Phone. Rows 1-4.

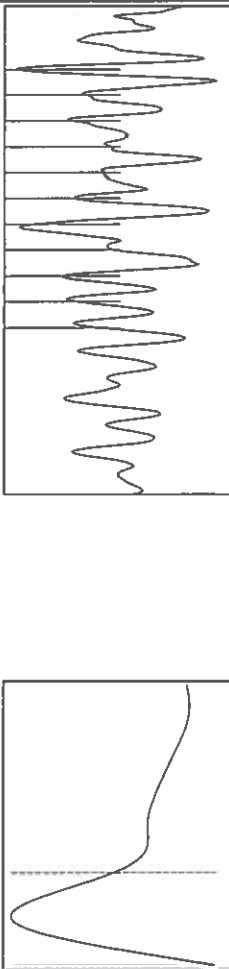
Shot @ 300' JTK

Group: Liberal Wells Well: Downing A-2 (acquired on: 06/11/22 10:39:59)



Filter Type High Pass Automatic Collar Count Yes Time 3.563 sec  
 Manual Acoustic Velocity 196.23 ft/s Manual JTS/sec 18.8679 Joints 68.5192 ft  
 Depth 2172.06 ft

1.5 to 2.5 (Sec)

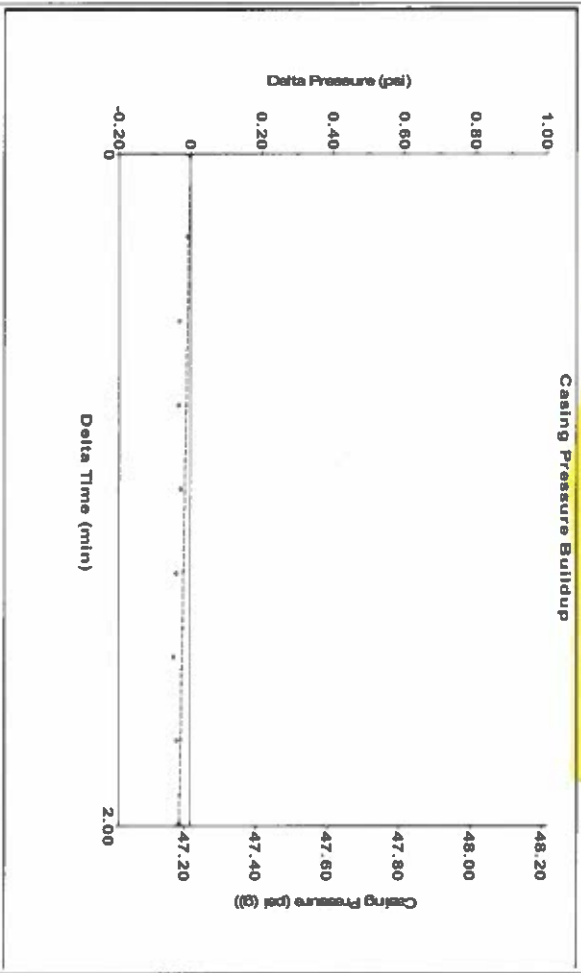


Analysis Method: Automatic

Group: Liberal Wells Well: Downing A-2 (acquired on: 06/11/22 10:39:59)

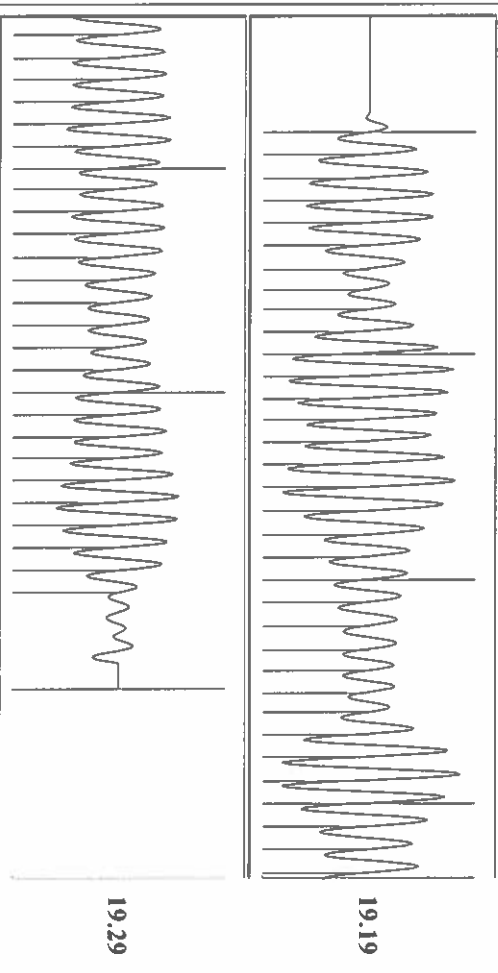
Production	Potential	Casing Pressure	Static
Oil 0	BB/L/D	47.2 psi (g)	Oil Column Height
Water 0	BB/L/D	Casing Pressure Buildup	MD 0 ft
Gas 0.0	Misc/D	-0.0 psi	Water Column Height
IPR Method	Vogel	2.00 min	MD 573 ft
PBIH/SBHP	Production Efficiency	Gas/Liquid Interface Pressure	
	0.0	50.8 psi (g)	
Oil 40 deg API	Liquid Level Depth		
Water 1.05 Sp.Gr.H2O	2172.06 ft		
Gas 0.77 Sp.Gr.AIR	Pump Intake Depth		
Acoustic Velocity	1219.23 ft/s	Formation Depth	
		2745.00 ft	
Acoustic Test		Static BIHP	311.8 psi (g)

Group: Liberal Wells Well: Downing A-2 (acquired on: 06/11/22 10:39:59)



Change in Pressure -0.03 psi PT 11249  
 Change in Time 2.00 min Range 0 - 2 psi

Group: Liberal Wells Well: Downing A-2 (acquired on: 06/11/22 10:39:59)



Acoustic Velocity 1219.23 ft/s Joints counted 59  
 Joints Per Second 19.2308 ft/sec Joints to liquid level 68.5192  
 Depth to liquid level 2172.06 ft Filter Width 16.8679  
 Automatic Collar Count Yes Time to 1st Collar 0.268 3.336

June 13, 2022

Katherine McClurkan  
Merit Energy Company, LLC  
13727 Noel Road, Suite 1200  
Dallas, TX 75240-7362

Re: Temporary Abandonment  
API 15-175-00292-00-00  
Downing A 2  
SW/4 Sec.09-32S-34W  
Seward County, Kansas

Dear Katherine McClurkan:

"Your temporary abandonment (TA) application for the well listed above has been approved. In accordance with K.A.R. 82-3-111 the TA status of this well will expire 06/13/2023.

- \* If you return this well to service or plug it, please notify the District Office.
- \* If you sell this well you are required to file a Transfer of Operator form, T-1.
- \* If the well will remain temporarily abandoned, you must submit a new TA application, CP-111, before 06/13/2023.

You may contact me at the number above if you have questions.

Very truly yours,

Michael Maier"