

KANSAS CORPORATION COMMISSION
OIL & GAS CONSERVATION DIVISION

Form must be Typed
Form must be signed

TEMPORARY ABANDONMENT WELL APPLICATION

All blanks must be complete

OPERATOR: License#
Name:
Address 1:
Address 2:
City: State: Zip:
Contact Person:
Phone:
Contact Person Email:
Field Contact Person:
Field Contact Person Phone:

API No. 15-
Spot Description:
Sec. Twp. S. R.
feet from N / S Line of Section
feet from E / W Line of Section
GPS Location: Lat: , Long:
Datum: NAD27 NAD83 WGS84
County: Elevation: GL KB
Lease Name: Well #:
Well Type: (check one) Oil Gas OG WSW Other:
SWD Permit #: ENHR Permit #:
Gas Storage Permit #:
Spud Date: Date Shut-In:

Table with 7 columns: Conductor, Surface, Production, Intermediate, Liner, Tubing. Rows include Size, Setting Depth, Amount of Cement, Top of Cement, Bottom of Cement.

Casing Fluid Level from Surface: How Determined? Date:
Casing Squeeze(s): to w / sacks of cement, to w / sacks of cement. Date:
Do you have a valid Oil & Gas Lease? Yes No
Depth and Type: Junk in Hole at Tools in Hole at Casing Leaks: Yes No Depth of casing leak(s):
Type Completion: ALT. I ALT. II Depth of: DV Tool: w / sacks of cement Port Collar: w / sack of cement
Packer Type: Size: Inch Set at: Feet
Total Depth: Plug Back Depth: Plug Back Method:

Geological Data:

Table with 4 columns: Formation Name, Formation Top, Formation Base, Completion Information. Rows 1 and 2.

UNDER PENALTY OF PERJURY I HEREBY ATTEST THAT THE INFORMATION CONTAINED HEREIN IS TRUE AND CORRECT TO THE BEST OF MY KNOWLEDGE

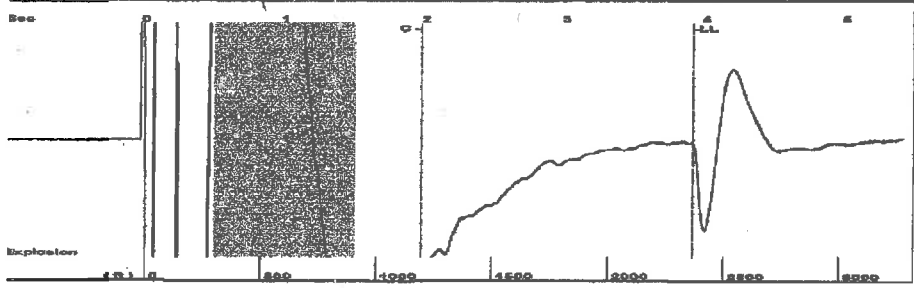
Submitted Electronically

Do NOT Write in This Space - KCC USE ONLY
Date Tested: Results: Date Plugged: Date Repaired: Date Put Back in Service:
Review Completed by: Comments:
TA Approved: Yes Denied Date:

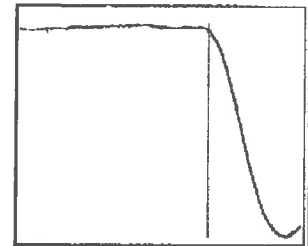
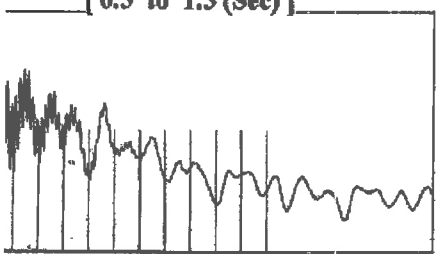
Mail to the Appropriate KCC Conservation Office:

Table with 2 columns: Office Address, Phone. Rows for District Office #1, #2, #3, #4.

Group: Belpre Well: Smith Leon 8-10 (acquired on: 06/14/22 08:17:42)

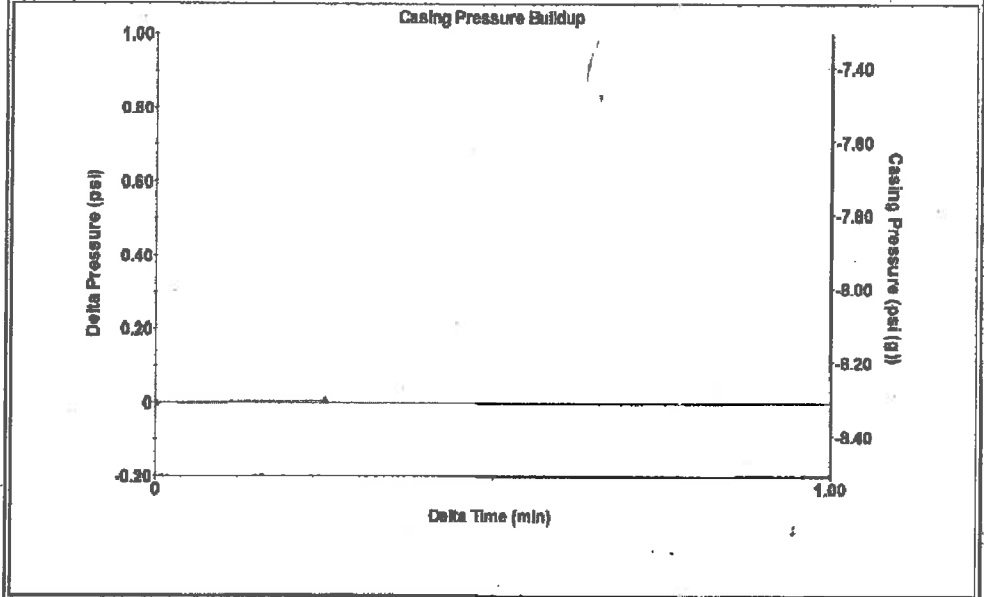


Type High Pass Automatic Collar Count Yes Time 3.905 sec
 Acoustic Velocity 1198.46 ft/s Manual JTS/sec 19.2308 Joints 75.9817 Jts
 Depth 2367.59 ft



Analysis Method: Automatic

Group: Belpre Well: Smith Leon 8-10 (acquired on: 06/14/22 08:17:42)

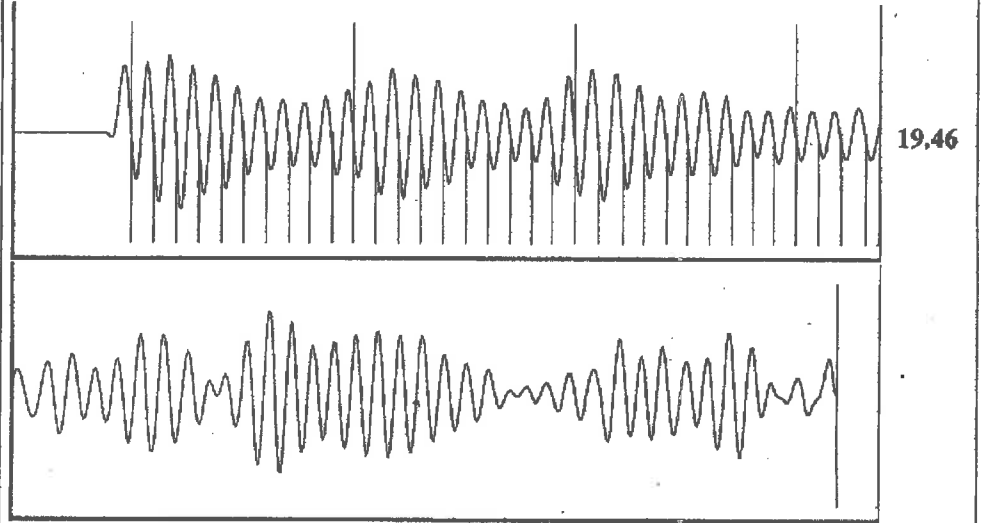


Change in Pressure 0.01 psi PT13440
 Change in Time 0.25 min Range 0 - 7 psi

Group: Belpre Well: Smith Leon 8-10 (acquired on: 06/14/22 08:17:42)

<p>Production - * - BBL/D - * - BBL/D - * - Msc/D</p> <p>Method P/SBHP Production Efficiency 0.0</p> <p>40 deg API 1.05 Sp.Gr.H2O 0.78 Sp.Gr.AIR</p> <p>Static Velocity 1212.59 ft/s</p> <p>Production Submergence Gaseous Liquid Column HT (TVD) 1964 ft Gaseous Free Liquid HT (TVD) 1964 ft</p> <p>Static Test</p>	<p>Potential</p> <p>Vogel</p> <p>1212.59 ft/s</p>	<p>Casing Pressure -8.3 psi (g) Casing Pressure Buildup 0.005 psi 0.25 min Gas/Liquid Interface Pressure -7.9 psi (g) Liquid Level Depth 2367.59 ft Pump Intake Depth 4332.00 ft Formation Depth 4322.00 ft</p>	<p>Producing</p> <p>Annular Gas Flow 0 Msc/D % Liquid 100 %</p> <p>Pump Intake 648.6 psi (g) Producing BHP 645.3 psi (g) Static BHP - * - psi (g)</p>	
--	---	---	--	--

Group: Belpre Well: Smith Leon 8-10 (acquired on: 06/14/22 08:17:42)



Acoustic Velocity 1212.59 ft/s Joints counted 33
 Joints Per Second 19.4575 jts/sec Joints to liquid level 75.9817
 Depth to liquid level 2367.59 ft Filter Width 17.2308 21.2308
 Automatic Collar Count Yes Time to 1st Collar 0.272 1.968

June 15, 2022

Loveness Mpanje
F. G. Holl Company L.L.C.
9431 E CENTRAL STE 100
WICHITA, KS 67206-2563

Re: Temporary Abandonment
API 15-047-21373-00-00
SMITH, LEON 8-10
NW/4 Sec.10-24S-17W
Edwards County, Kansas

Dear Loveness Mpanje:

"Your temporary abandonment (TA) application for the well listed above has been approved. In accordance with K.A.R. 82-3-111 the TA status of this well will expire 06/15/2023.

- * If you return this well to service or plug it, please notify the District Office.
- * If you sell this well you are required to file a Transfer of Operator form, T-1.
- * If the well will remain temporarily abandoned, you must submit a new TA application, CP-111, before 06/15/2023.

You may contact me at the number above if you have questions.

Very truly yours,

Michael Maier"