

KANSAS CORPORATION COMMISSION
OIL & GAS CONSERVATION DIVISION

TEMPORARY ABANDONMENT WELL APPLICATION

OPERATOR: License#
Name:
Address 1:
Address 2:
City: State: Zip:
Contact Person:
Phone:
Contact Person Email:
Field Contact Person:
Field Contact Person Phone:

API No. 15-
Spot Description:
Sec. Twp. S. R.
feet from N / S Line of Section
feet from E / W Line of Section
GPS Location: Lat: , Long:
Datum: NAD27 NAD83 WGS84
County: Elevation: GL KB
Lease Name: Well #:
Well Type: (check one) Oil Gas OG WSW Other:
SWD Permit #: ENHR Permit #:
Gas Storage Permit #:
Spud Date: Date Shut-In:

Table with 7 columns: Conductor, Surface, Production, Intermediate, Liner, Tubing. Rows include Size, Setting Depth, Amount of Cement, Top of Cement, Bottom of Cement.

Casing Fluid Level from Surface: How Determined? Date:
Casing Squeeze(s): to w / sacks of cement, to w / sacks of cement. Date:
Do you have a valid Oil & Gas Lease? Yes No
Depth and Type: Junk in Hole at Tools in Hole at Casing Leaks: Yes No Depth of casing leak(s):
Type Completion: ALT. I ALT. II Depth of: DV Tool: w / sacks of cement Port Collar: w / sack of cement
Packer Type: Size: Inch Set at: Feet
Total Depth: Plug Back Depth: Plug Back Method:

Geological Data:

Table with 4 columns: Formation Name, Formation Top, Formation Base, Completion Information. Rows 1 and 2.

UNDER PENALTY OF PERJURY I HEREBY ATTEST THAT THE INFORMATION CONTAINED HEREIN IS TRUE AND CORRECT TO THE BEST OF MY KNOWLEDGE

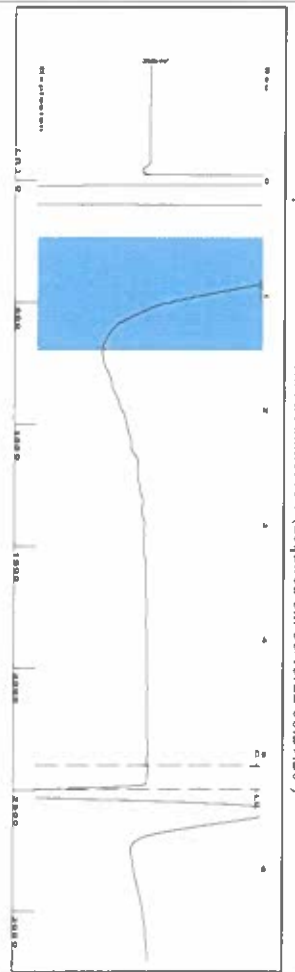
Submitted Electronically

Do NOT Write in This Space - KCC USE ONLY
Date Tested: Results: Date Plugged: Date Repaired: Date Put Back in Service:
Review Completed by: Comments:
TA Approved: Yes Denied Date:

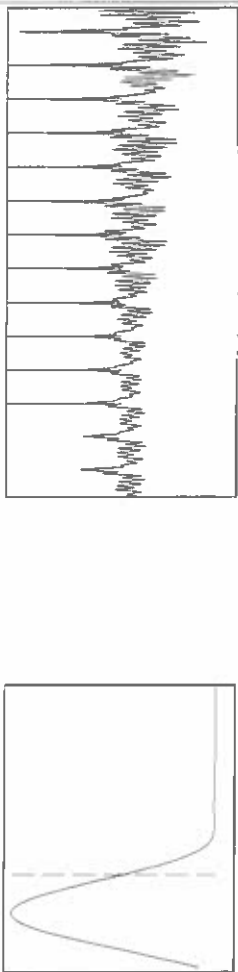
Mail to the Appropriate KCC Conservation Office:

Table with 3 columns: District Office, Address, Phone. Rows for District Office #1, #2, #3, #4.

Group: SUBLETTE Well: Arbutnot A-7 (acquired on: 06/15/22 08:29:20)



0.5 to 1.5 (Sec)



Analysis Method: Automatic

Group: SUBLETTE Well: Arbutnot A-7 (acquired on: 06/15/22 08:29:20)

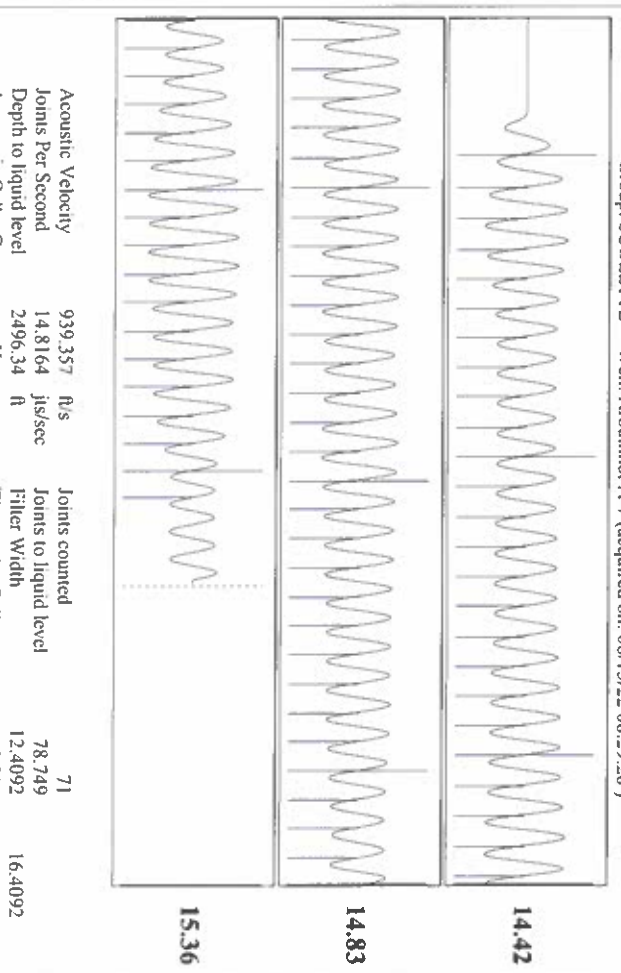
Group: SUBLETTE Well: Arbutnot A-7 (acquired on: 06/15/22 08:29:20)



Change in Pressure -0.04 psi PT116716
 Change in Time 2.00 min Range
 0 - 7 psi

Group: SUBLETTE Well: Arbutnot A-7 (acquired on: 06/15/22 08:29:20)

Production	Potential	Casing Pressure	Producing
Current	-* - BBL/D	2.4 psi (g)	Pump Intake
Oil	-* - BBL/D	Casing Pressure Buildup	704.7 psi (g)
Water	-* - Mscf/D	-0.044 psi	Producing BHP
Gas	-* -	2.00 min	697.4 psi (g)
IPR Method	Vogel	Gas/Liquid Interface Pressure	Static BHP
PBH/PSBHP	-* -	3.9 psi (g)	-* - psi (g)
Production Efficiency	0.0	Liquid Level Depth	
Oil	40 deg API	2496.34 ft	
Water	1.05 Sp.Gr./H ₂ O	Pump Intake Depth	
Gas	1.03 Sp.Gr./AIR	4603.00 ft	
Acoustic Velocity	939.357 ft/s	Formation Depth	
		4580.00 ft	



Acoustic Velocity 939.357 ft/s Joints counted 71
 Joints Per Second 14.8164 ft/sec Joints to liquid level 78.749
 Depth to liquid level 2496.34 ft Filler Width 12.4092
 Automatic Collar Count Yes Time to 1st Collar 0.316 16.4092
 5.108

Conservation Division
District Office No. 1
210 E. Frontview, Suite A
Dodge City, KS 67801



Phone: 620-682-7933
<http://kcc.ks.gov/>

Dwight D. Keen, Chair
Susan K. Duffy, Commissioner
Andrew J. French, Commissioner

Laura Kelly, Governor

June 15, 2022

Katherine McClurkan
Merit Energy Company, LLC
13727 Noel Road, Suite 1200
Dallas, TX 75240-7362

Re: Temporary Abandonment
API 15-081-21978-00-00
Arbuthnot A 7
SE/4 Sec.32-30S-33W
Haskell County, Kansas

Dear Katherine McClurkan:

"Your temporary abandonment (TA) application for the well listed above has been approved. In accordance with K.A.R. 82-3-111 the TA status of this well will expire 06/15/2023.

- * If you return this well to service or plug it, please notify the District Office.
- * If you sell this well you are required to file a Transfer of Operator form, T-1.
- * If the well will remain temporarily abandoned, you must submit a new TA application, CP-111, before 06/15/2023.

You may contact me at the number above if you have questions.

Very truly yours,

Michael Maier"