

KANSAS CORPORATION COMMISSION
OIL & GAS CONSERVATION DIVISION

TEMPORARY ABANDONMENT WELL APPLICATION

OPERATOR: License# _____
 Name: _____
 Address 1: _____
 Address 2: _____
 City: _____ State: _____ Zip: _____ + _____
 Contact Person: _____
 Phone: (_____) _____
 Contact Person Email: _____
 Field Contact Person: _____
 Field Contact Person Phone: (_____) _____

API No. 15- _____
 Spot Description: _____
 _____ - _____ - _____ - _____ Sec. _____ Twp. _____ S. R. _____ E W
 _____ feet from N / S Line of Section
 _____ feet from E / W Line of Section
 GPS Location: Lat: _____, Long: _____
(e.g. xx.xxxxx) (e.g. -xxx.xxxxx)
 Datum: NAD27 NAD83 WGS84
 County: _____ Elevation: _____ GL KB
 Lease Name: _____ Well #: _____
 Well Type: (check one) Oil Gas OG WSW Other: _____
 SWD Permit #: _____ ENHR Permit #: _____
 Gas Storage Permit #: _____
 Spud Date: _____ Date Shut-In: _____

	Conductor	Surface	Production	Intermediate	Liner	Tubing
Size						
Setting Depth						
Amount of Cement						
Top of Cement						
Bottom of Cement						

Casing Fluid Level from Surface: _____ How Determined? _____ Date: _____
 Casing Squeeze(s): _____ to _____ w / _____ sacks of cement, _____ to _____ w / _____ sacks of cement. Date: _____
(top) (bottom) (top) (bottom)
 Do you have a valid Oil & Gas Lease? Yes No
 Depth and Type: Junk in Hole at _____ Tools in Hole at _____ Casing Leaks: Yes No Depth of casing leak(s): _____
(depth) (depth)
 Type Completion: ALT. I ALT. II Depth of: DV Tool: _____ w / _____ sacks of cement Port Collar: _____ w / _____ sack of cement
(depth) (depth)
 Packer Type: _____ Size: _____ Inch Set at: _____ Feet
 Total Depth: _____ Plug Back Depth: _____ Plug Back Method: _____

Geological Data:

Formation Name	Formation Top	Formation Base	Completion Information
1. _____	At: _____	to _____ Feet	Perforation Interval _____ to _____ Feet or Open Hole Interval _____ to _____ Feet
2. _____	At: _____	to _____ Feet	Perforation Interval _____ to _____ Feet or Open Hole Interval _____ to _____ Feet

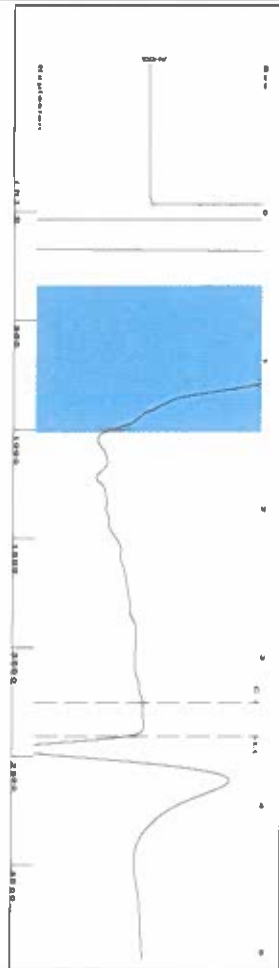
UNDER PENALTY OF PERJURY I HEREBY ATTEST THAT THE INFORMATION CONTAINED HEREIN IS TRUE AND CORRECT TO THE BEST OF MY KNOWLEDGE

Submitted Electronically

Do NOT Write in This Space - KCC USE ONLY	Date Tested: _____	Results: _____	Date Plugged: _____	Date Repaired: _____	Date Put Back in Service: _____
	Review Completed by: _____ Comments: _____				
TA Approved: <input type="checkbox"/> Yes <input type="checkbox"/> Denied Date: _____					

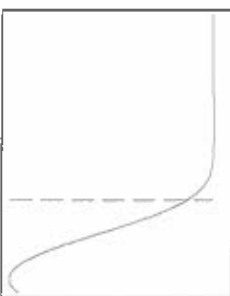
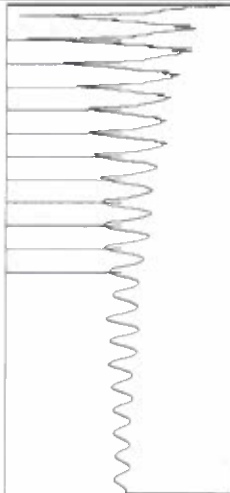
Mail to the Appropriate KCC Conservation Office:

	KCC District Office #1 - 210 E. Frontview, Suite A, Dodge City, KS 67801	Phone 620.682.7933
	KCC District Office #2 - 3450 N. Rock Road, Building 600, Suite 601, Wichita, KS 67226	Phone 316.337.7400
	KCC District Office #3 - 137 E. 21st St., Chanute, KS 66720	Phone 620.902.6450
	KCC District Office #4 - 2301 E. 13th Street, Hays, KS 67601-2651	Phone 785.261.6250

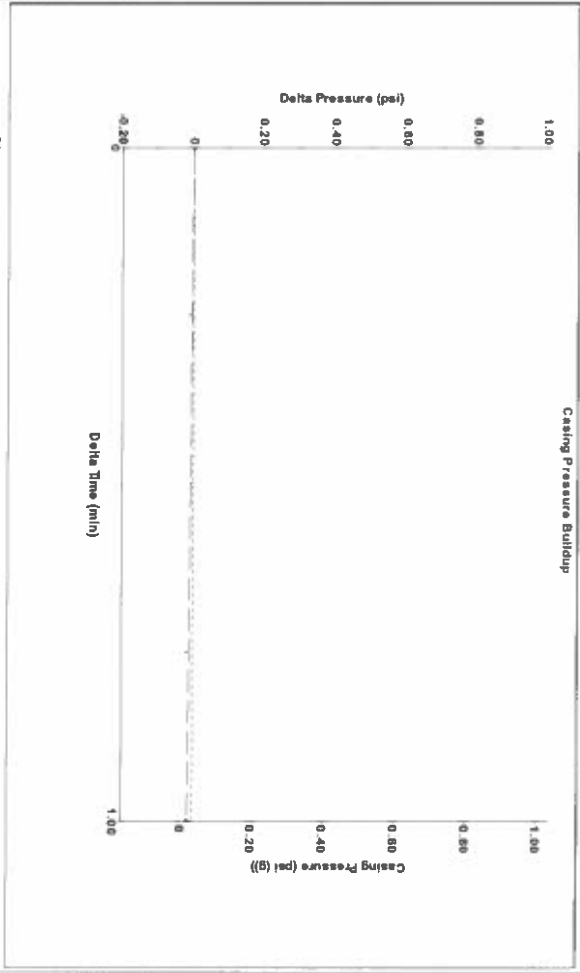


Filter Type High Pass
 Manual Acoustic Velo 1334.74 R/s
 Automatic Collar Count Yes
 Manual JTS/sec 21.0526

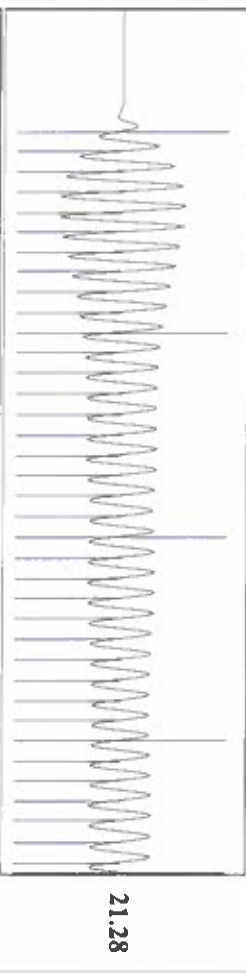
Time 3.544 sec
 Joints 75.9763 J/s
 Depth 2408.45 ft



Analysis Method: Automatic

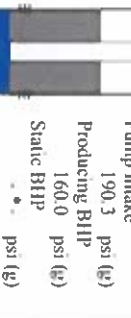


Change in Pressure -0.01 psi
 Change in Time 1.00 min
 PT16716 Range
 0 - ? psi



Production
 Current Potential
 Oil -*- BBL/D
 Water -*- BBL/D
 Gas -*- MscFD
 PPR Method
 PBHP/SBHP
 Production Efficiency 0.0
 Oil 40 deg API
 Water 1.05 Sp.Gr.H2O
 Gas 0.65 Sp.Gr.AIR
 Acoustic Velocity 1339.17 R/s
 Formation Velocity 2881.00 ft
 Casing Pressure 0.0 psi (g)
 Casing Pressure Buildup -0.013 psi
 Gas/Liquid Interface Pressure 1.00 min
 0.8 psi (g)
 Liquid Level Depth 2408.45 ft
 Pump Intake Depth 2972.00 ft
 Formation Depth 2881.00 ft
 Producing Annular Gas Flow 0 MscFD
 % Liquid 100 %
 Pump Intake 190.3 psi (g)
 Producing BHP 160.0 psi (g)
 Static BHP -*- psi (g)

Formation Submergence
 Total Gaseous Liquid Column HT (TVD) 564 ft
 Equivalent Gas Free Liquid HT (TVD) 564 ft



Acoustic Velocity 1339.17 R/s
 Joints Per Second 21.438 J/s/sec
 Depth to liquid level 2408.45 ft
 Automatic Collar Count Yes
 Joints counted 65
 Joints to liquid level 75.9763
 Filter Width 19.0526
 Time to 1st Collar 0.284
 23.0526
 3.316

June 15, 2022

Katherine McClurkan
Merit Energy Company, LLC
13727 Noel Road, Suite 1200
Dallas, TX 75240-7362

Re: Temporary Abandonment
API 15-081-21471-00-00
Burton A 5
NE/4 Sec.06-29S-34W
Haskell County, Kansas

Dear Katherine McClurkan:

"Your temporary abandonment (TA) application for the well listed above has been approved. In accordance with K.A.R. 82-3-111 the TA status of this well will expire 06/15/2023.

- * If you return this well to service or plug it, please notify the District Office.
- * If you sell this well you are required to file a Transfer of Operator form, T-1.
- * If the well will remain temporarily abandoned, you must submit a new TA application, CP-111, before 06/15/2023.

You may contact me at the number above if you have questions.

Very truly yours,

Michael Maier"