

KANSAS CORPORATION COMMISSION
OIL & GAS CONSERVATION DIVISION

TEMPORARY ABANDONMENT WELL APPLICATION

OPERATOR: License#
Name:
Address 1:
Address 2:
City: State: Zip:
Contact Person:
Phone:
Contact Person Email:
Field Contact Person:
Field Contact Person Phone:

API No. 15-
Spot Description:
Sec. Twp. S. R.
GPS Location: Lat: Long:
Datum: NAD27 NAD83 WGS84
County: Elevation:
Lease Name: Well #:
Well Type: Oil Gas OG WSW Other:
SWD Permit #: ENHR Permit #:
Gas Storage Permit #:
Spud Date: Date Shut-In:

Table with 7 columns: Conductor, Surface, Production, Intermediate, Liner, Tubing. Rows include Size, Setting Depth, Amount of Cement, Top of Cement, Bottom of Cement.

Casing Fluid Level from Surface: How Determined? Date:
Casing Squeeze(s): to w / sacks of cement, to w / sacks of cement. Date:
Do you have a valid Oil & Gas Lease? Yes No
Depth and Type: Junk in Hole at Tools in Hole at Casing Leaks: Yes No Depth of casing leak(s):
Type Completion: ALT. I ALT. II Depth of: DV Tool: w / sacks of cement Port Collar: w / sack of cement
Packer Type: Size: Inch Set at: Feet
Total Depth: Plug Back Depth: Plug Back Method:

Geological Data:

Table with 4 columns: Formation Name, Formation Top, Formation Base, Completion Information. Rows 1 and 2.

UNDER PENALTY OF PERJURY I HEREBY ATTEST THAT THE INFORMATION CONTAINED HEREIN IS TRUE AND CORRECT TO THE BEST OF MY KNOWLEDGE

Submitted Electronically

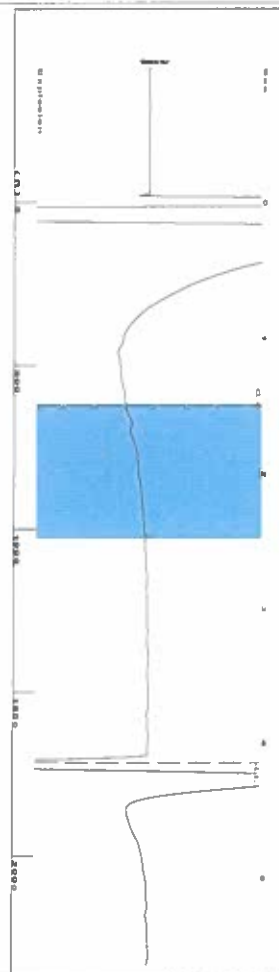
Do NOT Write in This Space - KCC USE ONLY
Date Tested: Results: Date Plugged: Date Repaired: Date Put Back in Service:
Review Completed by: Comments:
TA Approved: Yes Denied Date:

Mail to the Appropriate KCC Conservation Office:

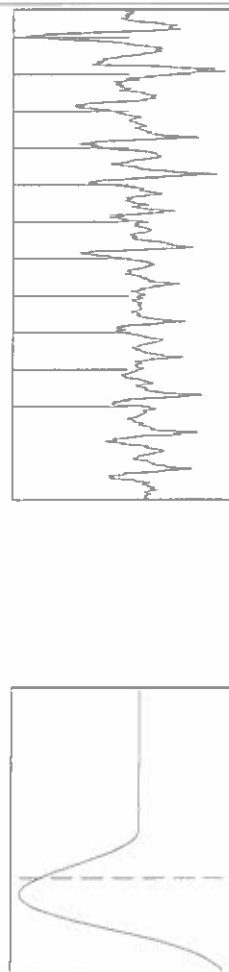
Table with 2 columns: Office Address, Phone. Rows for District Office #1, #2, #3, #4.



Group: SUBLETTE Well: SHALER A-2 (acquired on: 06/15/22 11:07:28 )



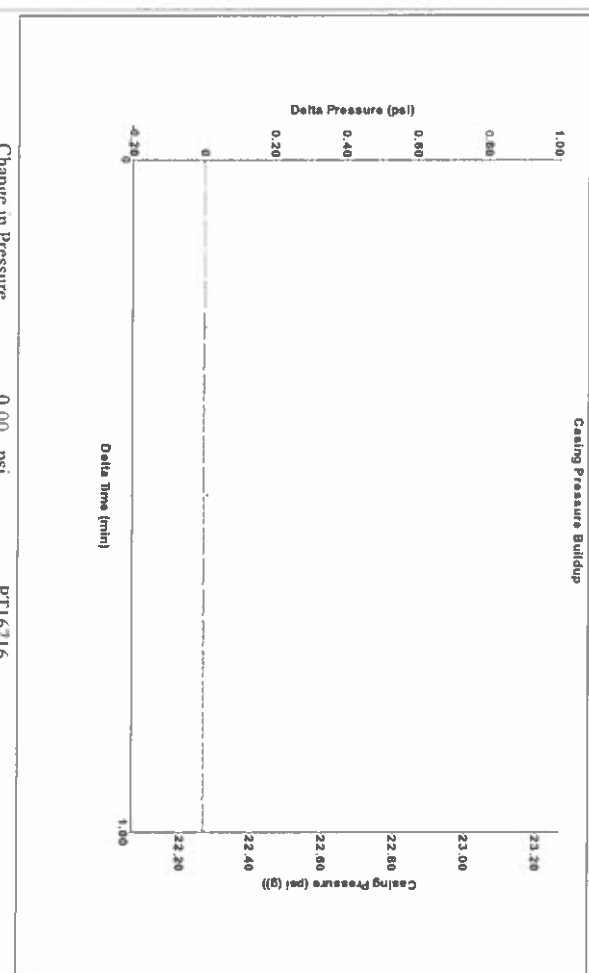
Filter Type High Pass Automatic Collar Count Yes  
 Manual Acoustic Velocity 8/35 ft/s Manual JTS/sec 13.245  
 Time 4.145 sec  
 Joints 54.0652 JIS  
 Depth 1713.87 ft



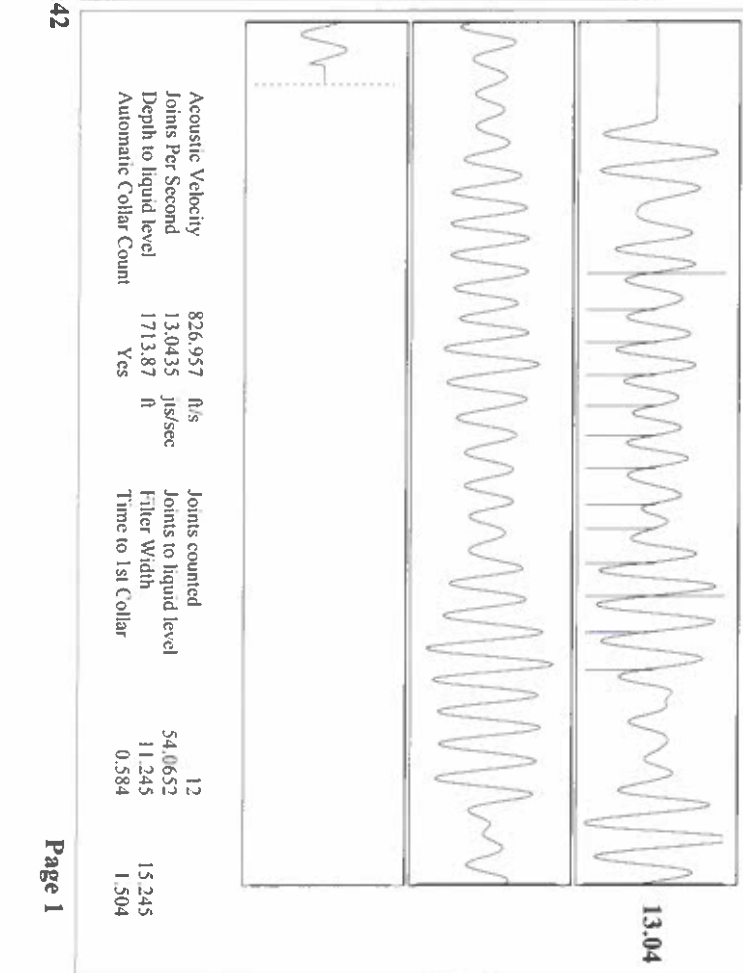
Group: SUBLETTE Well: SHALER A-2 (acquired on: 06/15/22 11:07:28 )

Production	Potential	Casing Pressure	Producing
Oil -*- BBL/D	22.3 psi (g)	Annular Gas Flow	-*- psi (g)
Water -*- BBL/D	0.003 psi	Casing Pressure Buildup	Producing BHP
Gas -*- Mscf/D	1.00 min	Gas/Liquid Interface Pressure	1708.0 psi (g)
IPR Method	Vogel	Gas/Liquid Interface Pressure	Static BHP
PIBHP/SBHP	-*-	Liquid Level Depth	-*- psi (g)
Production Efficiency	0.0	1713.87 ft	1708.0 psi (g)
Oil 40 deg API		Pump Intake Depth	-*- psi (g)
Water 1.05 Sp.Gr.H2O		Formation Depth	-*-
Gas 1.12 Sp.Gr.AIR		5416.00 ft	
Acoustic Velocity	826.957 ft/s		
Formation Submergence			
Total Gaseous Liquid Column HIT (TVD)	3702 ft		
Equivalent Gas Free Liquid HIT (TVD)	3702 ft		
6/15/22			

Group: SUBLETTE Well: SHALER A-2 (acquired on: 06/15/22 11:07:28 )



Group: SUBLETTE Well: SHALER A-2 (acquired on: 06/15/22 11:07:28 )



Change in Pressure 0.00 psi PTT: 6.716  
 Change in Time 1.00 min Range  
 Acoustic Velocity 826.957 ft/s Joints counted 12  
 Joints Per Second 13.0435 JIS/sec Joints to liquid level 54.0652  
 Depth to liquid level 1713.87 ft Filter Width 11.245  
 Automatic Collar Count Yes Time to 1st Collar 0.584 1.504

June 15, 2022

Katherine McClurkan  
Merit Energy Company, LLC  
13727 Noel Road, Suite 1200  
Dallas, TX 75240

Re: Temporary Abandonment  
API 15-081-22040-00-00  
Shaler A 2  
NE/4 Sec.10-28S-34W  
Haskell County, Kansas

Dear Katherine McClurkan:

"Your temporary abandonment (TA) application for the well listed above has been approved. In accordance with K.A.R. 82-3-111 the TA status of this well will expire 06/15/2023.

- \* If you return this well to service or plug it, please notify the District Office.
- \* If you sell this well you are required to file a Transfer of Operator form, T-1.
- \* If the well will remain temporarily abandoned, you must submit a new TA application, CP-111, before 06/15/2023.

You may contact me at the number above if you have questions.

Very truly yours,

Michael Maier"