

KANSAS CORPORATION COMMISSION
OIL & GAS CONSERVATION DIVISION

TEMPORARY ABANDONMENT WELL APPLICATION

OPERATOR: License#
Name:
Address 1:
Address 2:
City: State: Zip:
Contact Person:
Phone:
Contact Person Email:
Field Contact Person:
Field Contact Person Phone:

API No. 15-
Spot Description:
Sec. Twp. S. R.
GPS Location: Lat: Long:
Datum: NAD27 NAD83 WGS84
County: Elevation:
Lease Name: Well #:
Well Type: Oil Gas OG WSW Other:
SWD Permit #: ENHR Permit #:
Gas Storage Permit #:
Spud Date: Date Shut-In:

Table with 7 columns: Conductor, Surface, Production, Intermediate, Liner, Tubing. Rows include Size, Setting Depth, Amount of Cement, Top of Cement, Bottom of Cement.

Casing Fluid Level from Surface: How Determined? Date:
Casing Squeeze(s): to w / sacks of cement, to w / sacks of cement. Date:
Do you have a valid Oil & Gas Lease? Yes No
Depth and Type: Junk in Hole at Tools in Hole at Casing Leaks: Yes No Depth of casing leak(s):
Type Completion: ALT. I ALT. II Depth of: DV Tool: w / sacks of cement Port Collar: w / sack of cement
Packer Type: Size: Inch Set at: Feet
Total Depth: Plug Back Depth: Plug Back Method:

Geological Data:

Table with 4 columns: Formation Name, Formation Top, Formation Base, Completion Information. Rows 1 and 2.

UNDER PENALTY OF PERJURY I HEREBY ATTEST THAT THE INFORMATION CONTAINED HEREIN IS TRUE AND CORRECT TO THE BEST OF MY KNOWLEDGE

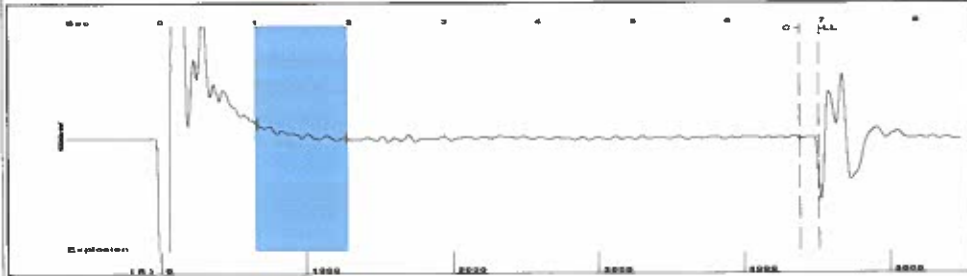
Submitted Electronically

Do NOT Write in This Space - KCC USE ONLY
Date Tested: Results: Date Plugged: Date Repaired: Date Put Back in Service:
Review Completed by: Comments:
TA Approved: Yes Denied Date:

Mail to the Appropriate KCC Conservation Office:

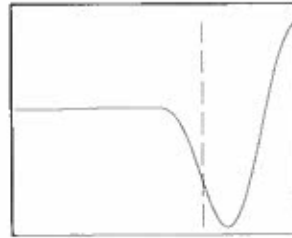
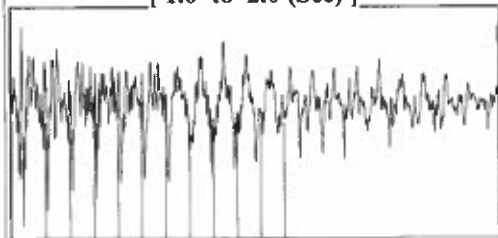
Table with 2 columns: Office Address, Phone. Rows for District Office #1, #2, #3, #4.

Group: ELKHART ROUTE 6 Well: GOODMAN 6 (acquired on: 06/16/22 11:40:17)



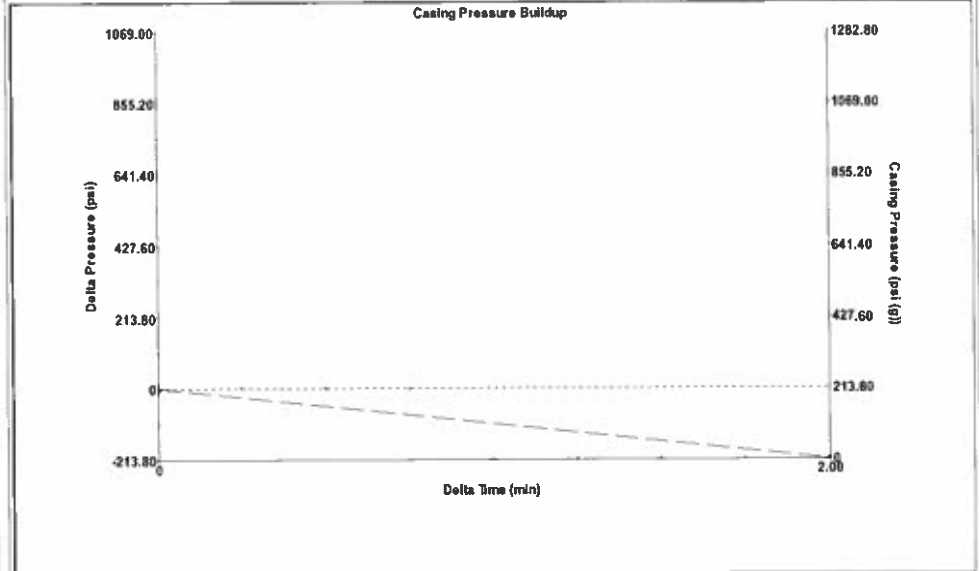
Filter Type High Pass Automatic Collar Count Yes Time 6.968 sec
 Manual Acoustic Velo 1275.51 ft/s Manual JTS/sec 20.4082 Joints 144.415 Jts
 Depth 4512.95 ft

[1.0 to 2.0 (Sec)]



Analysis Method: Automatic

Group: ELKHART ROUTE 6 Well: GOODMAN 6 (acquired on: 06/16/22 11:40:17)



Change in Pressure -213.73 psi PT9424
 Change in Time 2.00 min Range 0 - ? psi

Group: ELKHART ROUTE 6 Well: GOODMAN 6 (acquired on: 06/16/22 11:40:17)

Production Current Potential
 Oil -*- BBL/D
 Water -*- BBL/D
 Gas -*- Mscf/D

IPR Method Vogel
 PBHP/SBHP -*-
 Production Efficiency 0.0

Oil 40 deg.API
 Water 1.05 Sp.Gr.H2O
 Gas 0.68 Sp.Gr.AIR

Acoustic Velocity 1295.34 ft/s

Casing Pressure 213.8 psi (g)
 Casing Pressure Buildup -213.729 psi
 2.00 min
 Gas/Liquid Interface Pressure 239.7 psi (g)
 Liquid Level Depth 4512.95 ft
 Pump Intake Depth 5876.00 ft
 Formation Depth 5897.00 ft



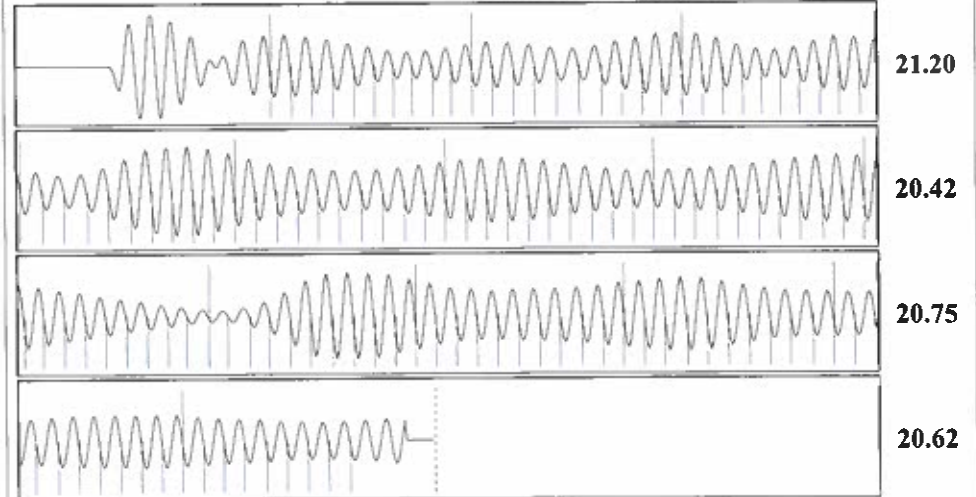
Producing
 Annular Gas Flow 0 Mscf/D
 % Liquid 100 %

Pump Intake 686.8 psi (g)
 Producing BHP 696.4 psi (g)
 Static BHP -*- psi (g)

Formation Submergence
 Total Gaseous Liquid Column HT (TVD) 1363 ft
 Equivalent Gas Free Liquid HT (TVD) 1363 ft

Acoustic Test

Group: ELKHART ROUTE 6 Well: GOODMAN 6 (acquired on: 06/16/22 11:40:17)



Acoustic Velocity 1295.34 ft/s Joints counted 128
 Joints Per Second 20.7254 jts/sec Joints to liquid level 144.415
 Depth to liquid level 4512.95 ft Filter Width 18.4082 22.4082
 Automatic Collar Count Yes Time to 1st Collar 0.592 6.768

June 26, 2022

Katherine McClurkan
Merit Energy Company, LLC
13727 Noel Road, Suite 1200
Dallas, TX 75240-7362

Re: Temporary Abandonment
API 15-129-21861-00-03
Goodman 6-M32-32-39
SW/4 Sec.32-32S-39W
Morton County, Kansas

Dear Katherine McClurkan:

"Your temporary abandonment (TA) application for the well listed above has been approved. In accordance with K.A.R. 82-3-111 the TA status of this well will expire 06/26/2023.

- * If you return this well to service or plug it, please notify the District Office.
- * If you sell this well you are required to file a Transfer of Operator form, T-1.
- * If the well will remain temporarily abandoned, you must submit a new TA application, CP-111, before 06/26/2023.

You may contact me at the number above if you have questions.

Very truly yours,

Michael Maier"