

KANSAS CORPORATION COMMISSION
OIL & GAS CONSERVATION DIVISION

TEMPORARY ABANDONMENT WELL APPLICATION

OPERATOR: License#
Name:
Address 1:
Address 2:
City: State: Zip:
Contact Person:
Phone:
Contact Person Email:
Field Contact Person:
Field Contact Person Phone:

API No. 15-
Spot Description:
Sec. Twp. S. R.
feet from N / S Line of Section
feet from E / W Line of Section
GPS Location: Lat: , Long:
Datum: NAD27 NAD83 WGS84
County: Elevation: GL KB
Lease Name: Well #:
Well Type: (check one) Oil Gas OG WSW Other:
SWD Permit #: ENHR Permit #:
Gas Storage Permit #:
Spud Date: Date Shut-In:

Table with 7 columns: Conductor, Surface, Production, Intermediate, Liner, Tubing. Rows include Size, Setting Depth, Amount of Cement, Top of Cement, Bottom of Cement.

Casing Fluid Level from Surface: How Determined? Date:
Casing Squeeze(s): to w / sacks of cement, to w / sacks of cement. Date:
Do you have a valid Oil & Gas Lease? Yes No
Depth and Type: Junk in Hole at Tools in Hole at Casing Leaks: Yes No Depth of casing leak(s):
Type Completion: ALT. I ALT. II Depth of: DV Tool: w / sacks of cement Port Collar: w / sack of cement
Packer Type: Size: Inch Set at: Feet
Total Depth: Plug Back Depth: Plug Back Method:

Geological Data:

Table with 4 columns: Formation Name, Formation Top, Formation Base, Completion Information. Rows 1 and 2.

UNDER PENALTY OF PERJURY I HEREBY ATTEST THAT THE INFORMATION CONTAINED HEREIN IS TRUE AND CORRECT TO THE BEST OF MY KNOWLEDGE

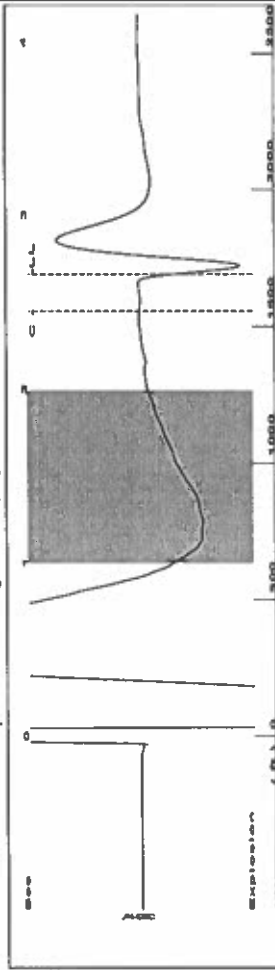
Submitted Electronically

Do NOT Write in This Space - KCC USE ONLY
Date Tested: Results: Date Plugged: Date Repaired: Date Put Back in Service:
Review Completed by: Comments:
TA Approved: Yes Denied Date:

Mail to the Appropriate KCC Conservation Office:

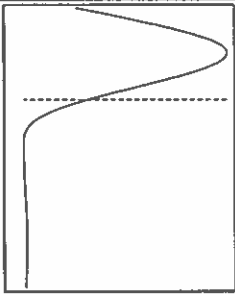
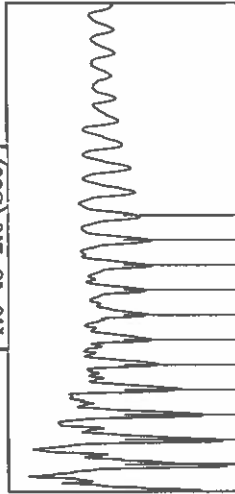
Table with 3 columns: District Office, Address, Phone. Rows for District Office #1, #2, #3, #4.

Group: TAD Well: gcc 1-530 (acquired on: 06/15/22 15:24:57)



Filter Type High Pass Automatic Collar Count Yes Time 2.658 sec
 Manual Acoustic Veloc 1243.14 ft/s Manual JTS/sec 19.6078 Joints 53.2784 Jts
 Depth 1688.93 ft

1.0 to 2.0 (Sec)

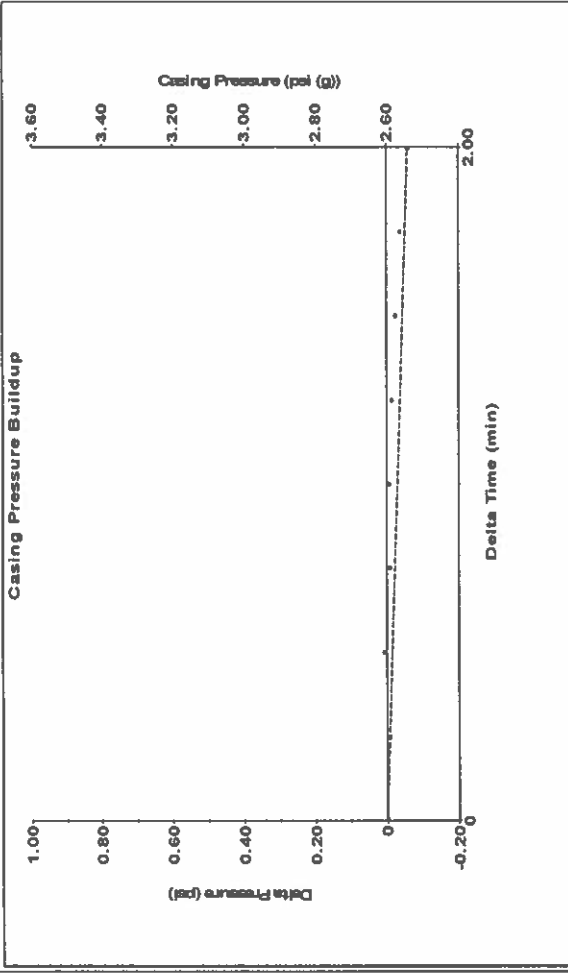


Analysis Method: Automatic

Group: TAD Well: gcc 1-530 (acquired on: 06/15/22 15:24:57)

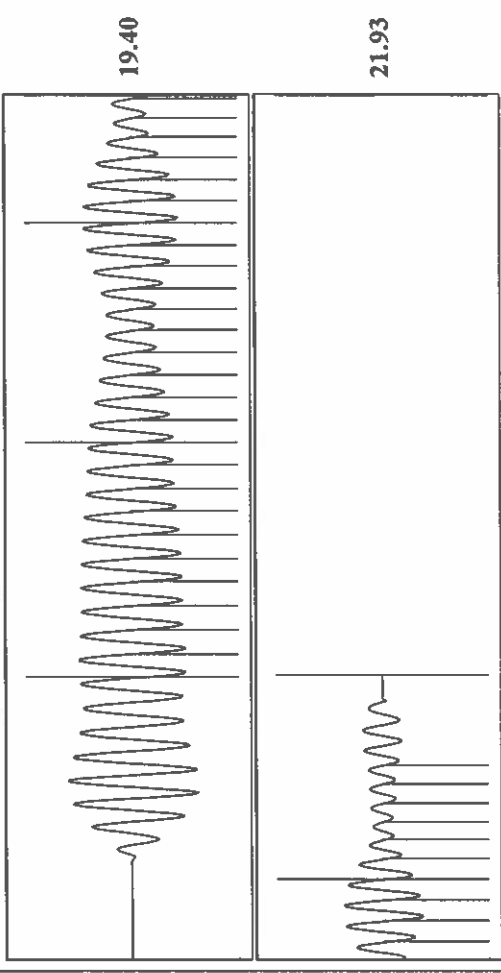
Production Current	Potential	Casing Pressure	2.6 psi (g)
Oil -*- BBL/D	-*- BBL/D	Casing Pressure Buildup	-0.059 psi
Water -*- BBL/D	-*- BBL/D	Gas/Liquid Interface Pressure	3.3 psi (g)
Gas -*- Msc/D	-*- Msc/D	Liquid Level Depth	1688.93 ft
IPR Method Vogel	-*-	Pump Intake Depth	-*- ft
PBHP/SBHP -*-	-*-	Formation Depth	4658.00 ft
Production Efficiency 0.0			
Oil 40 deg API			
Water 1.05 Sp.Gr.H2O			
Gas 0.71 Sp.Gr.AIR			
Acoustic Velocity 1270.82 ft/s			
Formation Submergence			
Total Gaseous Liquid Column HT (TVD) 2969 ft			
Equivalent Gas Free Liquid HT (TVD) 2969 ft			
Acoustic Test			
Producing	Annular Gas Flow 0 Msc/D	% Liquid 100 %	
Pump Intake	-*- psi (g)		
Producing BHP	1353.2 psi (g)		
Static BHP	-*- psi (g)		

Group: TAD Well: gcc 1-530 (acquired on: 06/15/22 15:24:57)



Change in Pressure -0.06 psi PT13865 Range
 Change in Time 2.00 min

Group: TAD Well: gcc 1-530 (acquired on: 06/15/22 15:24:57)



Acoustic Velocity 1270.82 ft/s Joints counted 36
 Joints Per Second 20.0445 jts/sec Joints to liquid level 53.2784
 Depth to liquid level 1688.93 ft Filter Width 17.6078
 Automatic Collar Count Yes Time to 1st Collar 0.652 2.448

Conservation Division
District Office No. 1
210 E. Frontview, Suite A
Dodge City, KS 67801



Phone: 620-682-7933
<http://kcc.ks.gov/>

Dwight D. Keen, Chair
Susan K. Duffy, Commissioner
Andrew J. French, Commissioner

Laura Kelly, Governor

July 05, 2022

Katherine McClurkan
Merit Energy Company, LLC
13727 Noel, Road, Suite 1200
Dallas, TX 75240

Re: Temporary Abandonment
API 15-055-21861-00-01
GCC 1-530
NW/4 Sec.30-23S-33W
Finney County, Kansas

Dear Katherine McClurkan:

"Your temporary abandonment (TA) application for the well listed above has been approved. In accordance with K.A.R. 82-3-111 the TA status of this well will expire 07/05/2023.

- * If you return this well to service or plug it, please notify the District Office.
- * If you sell this well you are required to file a Transfer of Operator form, T-1.
- * If the well will remain temporarily abandoned, you must submit a new TA application, CP-111, before 07/05/2023.

You may contact me at the number above if you have questions.

Very truly yours,

Michael Maier"