

KANSAS CORPORATION COMMISSION
OIL & GAS CONSERVATION DIVISION

TEMPORARY ABANDONMENT WELL APPLICATION

All blanks must be complete

OPERATOR: License# _____
Name: _____
Address 1: _____
Address 2: _____
City: _____ State: _____ Zip: _____ + _____
Contact Person: _____
Phone:(_____) _____
Contact Person Email: _____
Field Contact Person: _____
Field Contact Person Phone: (_____) _____

API No. 15- _____
Spot Description: _____
____ - ____ - ____ - ____ Sec. _____ Twp. _____ S. R. _____ E W
_____ feet from N / S Line of Section
_____ feet from E / W Line of Section
GPS Location: Lat: _____, Long: _____
(e.g. xx.xxxxx) (e.g. -xxx.xxxxx)
Datum: NAD27 NAD83 WGS84
County: _____ Elevation: _____ GL KB
Lease Name: _____ Well #: _____
Well Type: (check one) Oil Gas OG WSW Other: _____
 SWD Permit #: _____ ENHR Permit #: _____
 Gas Storage Permit #: _____
Spud Date: _____ Date Shut-In: _____

	Conductor	Surface	Production	Intermediate	Liner	Tubing
Size						
Setting Depth						
Amount of Cement						
Top of Cement						
Bottom of Cement						

Casing Fluid Level from Surface: _____ How Determined? _____ Date: _____
Casing Squeeze(s): _____ to _____ w / _____ sacks of cement, _____ to _____ w / _____ sacks of cement. Date: _____
(top) (bottom) (top) (bottom)
Do you have a valid Oil & Gas Lease? Yes No
Depth and Type: Junk in Hole at _____ (depth) Tools in Hole at _____ (depth) Casing Leaks: Yes No Depth of casing leak(s): _____
Type Completion: ALT. I ALT. II Depth of: DV Tool: _____ w / _____ sacks of cement Port Collar: _____ w / _____ sack of cement
(depth) (depth)
Packer Type: _____ Size: _____ Inch Set at: _____ Feet
Total Depth: _____ Plug Back Depth: _____ Plug Back Method: _____

Geological Date:

Formation Name	Formation Top	Formation Base	Completion Information
1. _____	At: _____	to _____ Feet	Perforation Interval _____ to _____ Feet or Open Hole Interval _____ to _____ Feet
2. _____	At: _____	to _____ Feet	Perforation Interval _____ to _____ Feet or Open Hole Interval _____ to _____ Feet

UNDER PENALTY OF PERJURY I HEREBY ATTEST THAT THE INFORMATION CONTAINED HEREIN IS TRUE AND CORRECT TO THE BEST OF MY KNOWLEDGE

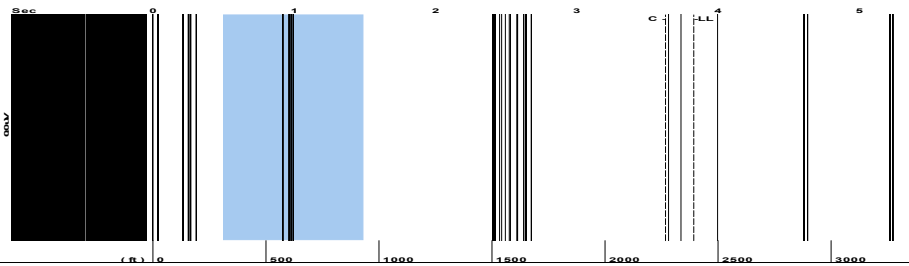
Submitted Electronically

Do NOT Write in This Space - KCC USE ONLY	Date Tested: _____	Results: _____	Date Plugged: _____	Date Repaired: _____	Date Put Back in Service: _____
	Review Completed by: _____ Comments: _____				
TA Approved: <input type="checkbox"/> Yes <input type="checkbox"/> Denied Date: _____					

Mail to the Appropriate KCC Conservation Office:

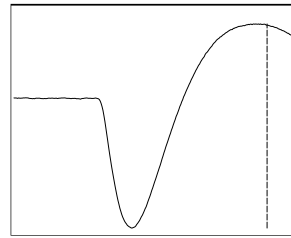
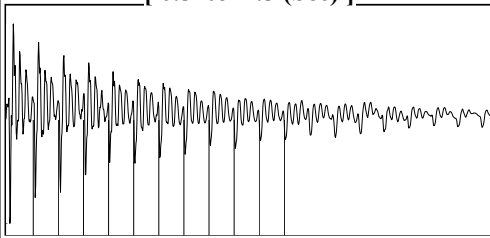
	KCC District Office #1 - 210 E. Frontview, Suite A, Dodge City, KS 67801	Phone 620.682.7933
	KCC District Office #2 - 3450 N. Rock Road, Building 600, Suite 601, Wichita, KS 67226	Phone 316.337.7400
	KCC District Office #3 - 137 E. 21st St., Chanute, KS 66720	Phone 620.902.6450
	KCC District Office #4 - 2301 E. 13th Street, Hays, KS 67601-2651	Phone 785.261.6250

Group: MyWells Well: GARDEN CITY 1-4 (acquired on: 07/05/22 08:47:53)



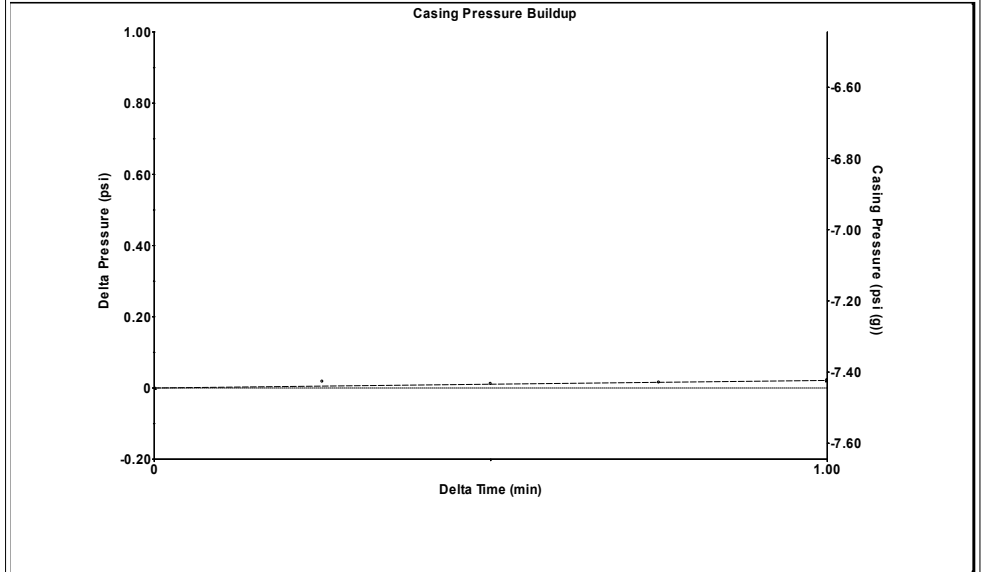
Filter Type High Pass Automatic Collar Count Yes Time 3.828 sec
 Manual Acoustic Veloc 1228.68 ft/s Manual JTS/sec 19.3798 Joints 75.4624 Jts
 Depth 2392.16 ft

[0.5 to 1.5 (Sec)]



Analysis Method: Automatic

Group: MyWells Well: GARDEN CITY 1-4 (acquired on: 07/05/22 08:47:53)

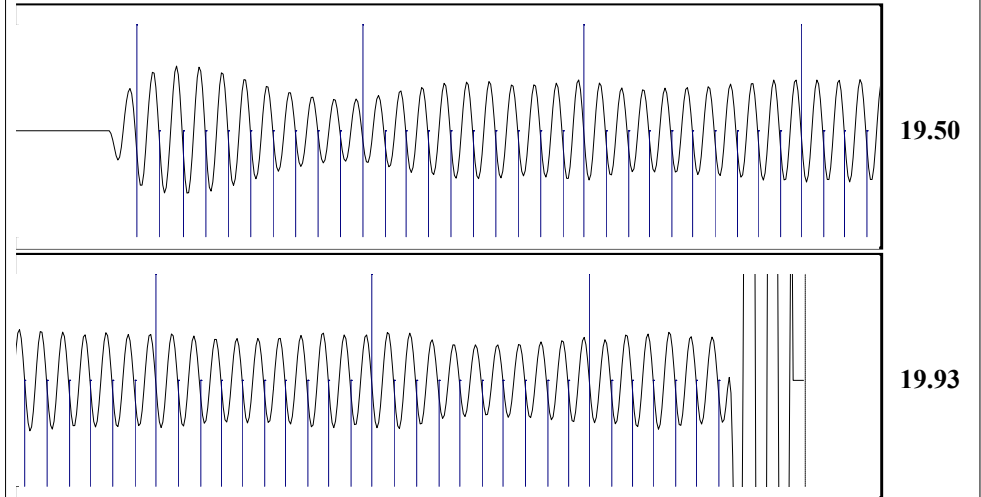


Change in Pressure 0.02 psi PT12098
 Change in Time 1.00 min Range 0 - ? psi

Group: MyWells Well: GARDEN CITY 1-4 (acquired on: 07/05/22 08:47:53)

Production Current	Potential	Casing Pressure	Producing
Oil - *-	- *- BBL/D	-7.4 psi (g)	Annular Gas Flow - *- Mscf/D
Water - *-	- *- BBL/D	Casing Pressure Buildup 0.021 psi	% Liquid 100 %
Gas - *-	- *- Mscf/D	1.00 min	
IPR Method	Vogel	Gas/Liquid Interface Pressure - *- psi (g)	
PBHP/SBHP	- *-		
Production Efficiency	0.0	Liquid Level Depth 2392.16 ft	
Oil 40 deg.API		Pump Intake Depth - *- ft	
Water 1.05 Sp.Gr.H2O		Formation Depth 2950.00 ft	
Gas 0.75 Sp.Gr.AIR			
Acoustic Velocity 1249.82 ft/s			
Formation Submergence			
Total Gaseous Liquid Column HT (TVD) - *- ft			
Equivalent Gas Free Liquid HT (TVD) - *- ft			
Acoustic Test			

Group: MyWells Well: GARDEN CITY 1-4 (acquired on: 07/05/22 08:47:53)



Acoustic Velocity 1249.82 ft/s Joints counted 66
 Joints Per Second 19.7133 jts/sec Joints to liquid level 75.4624
 Depth to liquid level 2392.16 ft Filter Width 17.3798 21.3798
 Automatic Collar Count Yes Time to 1st Collar 0.28 3.628

Conservation Division
District Office No. 1
210 E. Frontview, Suite A
Dodge City, KS 67801



Phone: 620-682-7933
<http://kcc.ks.gov/>

Dwight D. Keen, Chair
Susan K. Duffy, Commissioner
Andrew J. French, Commissioner

Laura Kelly, Governor

July 13, 2022

Octavio Morales
American Warrior, Inc.
PO BOX 399
GARDEN CITY, KS 67846-0399

Re: Temporary Abandonment
API 15-055-20559-00-00
GARDEN CITY 1-4
NW/4 Sec.14-24S-33W
Finney County, Kansas

Dear Octavio Morales:

"Your temporary abandonment (TA) application for the well listed above has been approved. In accordance with K.A.R. 82-3-111 the TA status of this well will expire 07/13/2023.

- * If you return this well to service or plug it, please notify the District Office.
- * If you sell this well you are required to file a Transfer of Operator form, T-1.
- * If the well will remain temporarily abandoned, you must submit a new TA application, CP-111, before 07/13/2023.

You may contact me at the number above if you have questions.

Very truly yours,

Michael Maier"