

KANSAS CORPORATION COMMISSION
OIL & GAS CONSERVATION DIVISION

TEMPORARY ABANDONMENT WELL APPLICATION

OPERATOR: License#
Name:
Address 1:
Address 2:
City: State: Zip:
Contact Person:
Phone:
Contact Person Email:
Field Contact Person:
Field Contact Person Phone:

API No. 15-
Spot Description:
Sec. Twp. S. R.
GPS Location: Lat, Long
Datum: NAD27, NAD83, WGS84
County: Elevation:
Lease Name: Well #:
Well Type: Oil, Gas, OG, WSW, Other
SWD Permit #: ENHR Permit #:
Gas Storage Permit #:
Spud Date: Date Shut-In:

Table with 7 columns: Conductor, Surface, Production, Intermediate, Liner, Tubing. Rows include Size, Setting Depth, Amount of Cement, Top of Cement, Bottom of Cement.

Casing Fluid Level from Surface: How Determined? Date:
Casing Squeeze(s): to w / sacks of cement, to w / sacks of cement. Date:
Do you have a valid Oil & Gas Lease? Yes No
Depth and Type: Junk in Hole at Tools in Hole at Casing Leaks: Yes No Depth of casing leak(s):
Type Completion: ALT. I ALT. II Depth of: DV Tool: w / sacks of cement Port Collar: w / sack of cement
Packer Type: Size: Inch Set at: Feet
Total Depth: Plug Back Depth: Plug Back Method:

Geological Data:

Table with 4 columns: Formation Name, Formation Top, Formation Base, Completion Information. Rows 1 and 2.

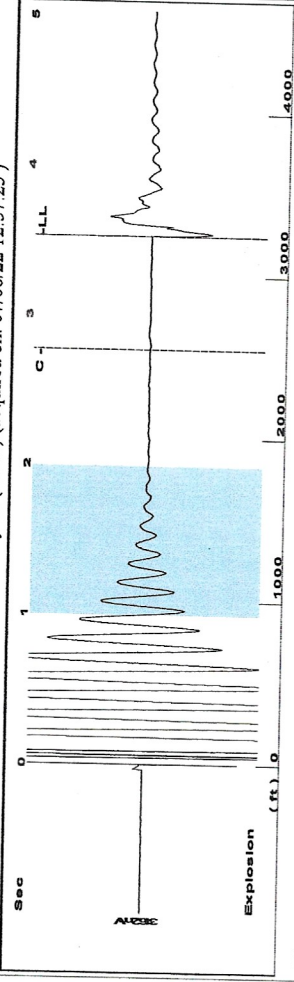
UNDER PENALTY OF PERJURY I HEREBY ATTEST THAT THE INFORMATION CONTAINED HEREIN IS TRUE AND CORRECT TO THE BEST OF MY KNOWLEDGE

Submitted Electronically

Do NOT Write in This Space - KCC USE ONLY
Date Tested: Results: Date Plugged: Date Repaired: Date Put Back in Service:
Review Completed by: Comments:
TA Approved: Yes Denied Date:

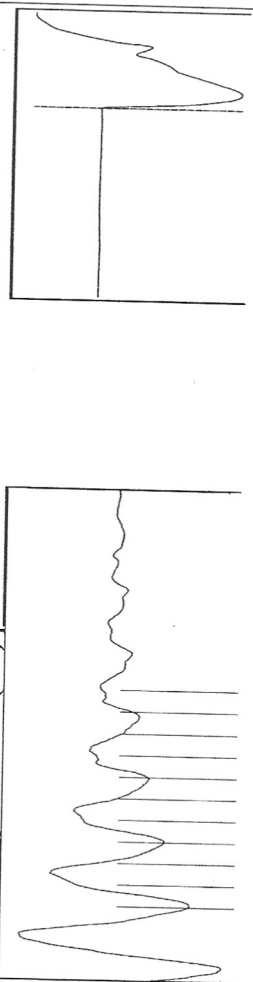
Mail to the Appropriate KCC Conservation Office:

Table with 2 columns: Office Address, Phone. Rows for District Office #1, #2, #3, #4.



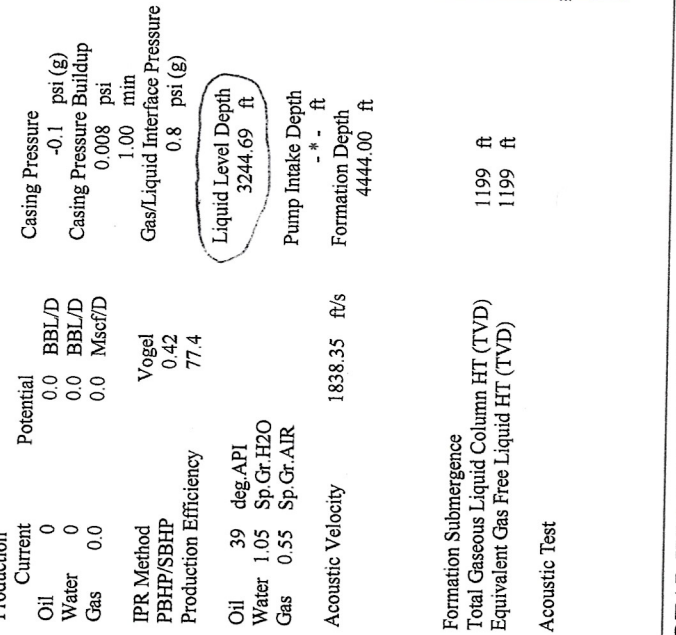
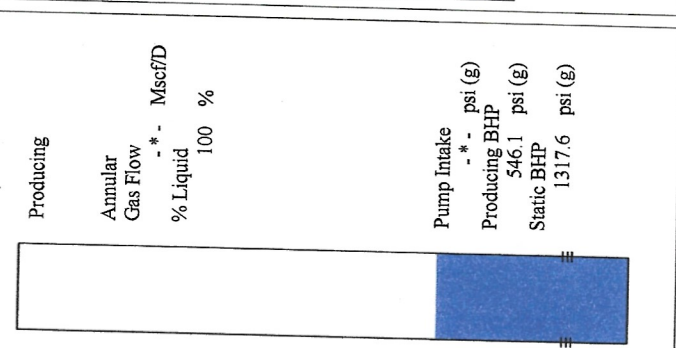
Filter Type High Pass  
 Manual Acoustic Velocity 809.95 ft/s  
 Automatic Collar Count Yes  
 Manual JTS/sec 22.6244  
 Time 3.53 sec  
 Joints 81.1173 Jts  
 Depth 3244.69 ft

[ 1.0 to 2.0 (Sec) ]

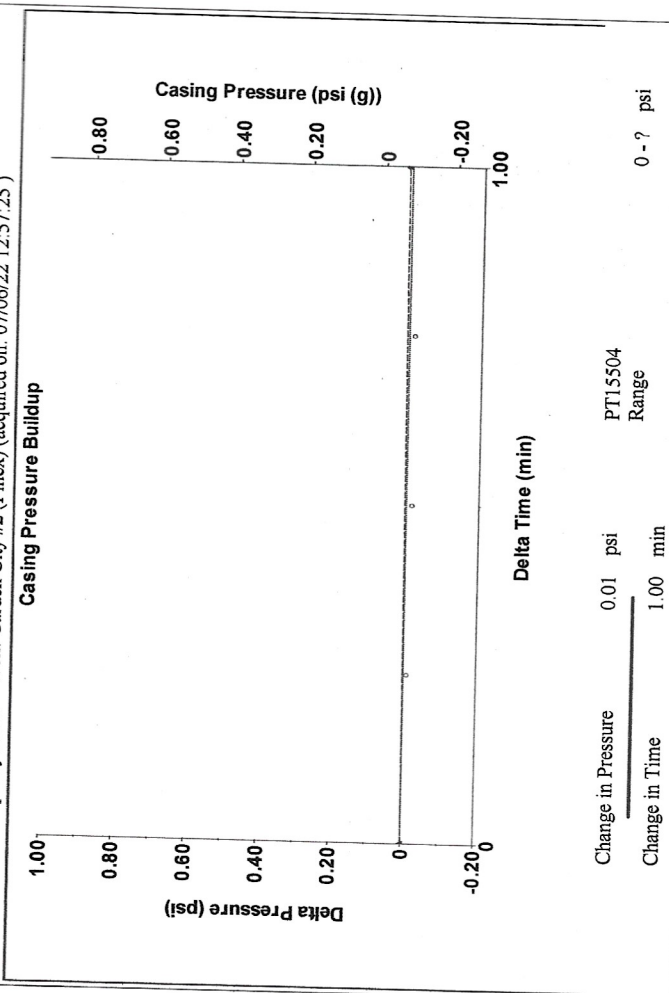


**Analysis Method: Automatic**

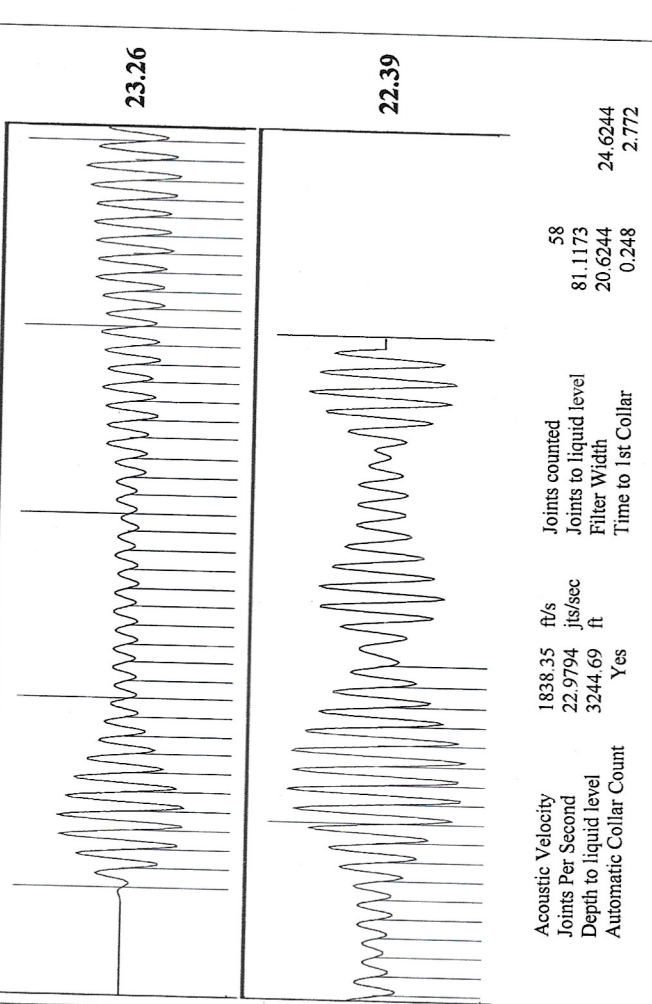
Production Current	Potential	Casing Pressure	Producing
Oil 0	0.0 BBL/D	-0.1 psi (g)	Annular
Water 0	0.0 BBL/D	Casing Pressure Buildup	Gas Flow
Gas 0.0	0.0 Mscf/D	0.008 psi	% Liquid
IPR Method	Vogel	1.00 min	100 %
PBHP/SBHP	0.42	Gas/Liquid Interface Pressure	
Production Efficiency	77.4	0.8 psi (g)	
Oil 39 deg.API		Liquid Level Depth	
Water 1.05 Sp.Gr.H2O		3244.69 ft	
Gas 0.55 Sp.Gr.AIR		Pump Intake Depth	
Acoustic Velocity	1838.35 ft/s	Formation Depth	
		4444.00 ft	
Formation Submergence			
Total Gaseous Liquid Column HT (TVD)	1199 ft		
Equivalent Gas Free Liquid HT (TVD)	1199 ft		
Acoustic Test			



**Casing Pressure Buildup**



Change in Pressure 0.01 psi  
 Change in Time 1.00 min  
 PT15504 Range



Acoustic Velocity 1838.35 ft/s  
 Joints Per Second 22.9794 jts/sec  
 Depth to liquid level 3244.69 ft  
 Automatic Collar Count Yes  
 Joints counted 58  
 Joints to liquid level 81.1173  
 Filter Width 20.6244  
 Time to 1st Collar 2.772

July 20, 2022

Kent Strube  
Hartman Oil Co., Inc.  
10500 E BERKELEY SQ PKWY STE 100  
WICHITA, KS 67206-6816

Re: Temporary Abandonment  
API 15-055-20033-00-00  
GARDEN CITY B 2-8  
NW/4 Sec.08-22S-33W  
Finney County, Kansas

Dear Kent Strube:

"Your temporary abandonment (TA) application for the well listed above has been approved. In accordance with K.A.R. 82-3-111 the TA status of this well will expire 07/20/2023.

- \* If you return this well to service or plug it, please notify the District Office.
- \* If you sell this well you are required to file a Transfer of Operator form, T-1.
- \* If the well will remain temporarily abandoned, you must submit a new TA application, CP-111, before 07/20/2023.

You may contact me at the number above if you have questions.

Very truly yours,

Michael Maier"