

KANSAS CORPORATION COMMISSION
OIL & GAS CONSERVATION DIVISION

TEMPORARY ABANDONMENT WELL APPLICATION

OPERATOR: License#
Name:
Address 1:
Address 2:
City: State: Zip:
Contact Person:
Phone:
Contact Person Email:
Field Contact Person:
Field Contact Person Phone:

API No. 15-
Spot Description:
Sec. Twp. S. R.
feet from N / S Line of Section
feet from E / W Line of Section
GPS Location: Lat: , Long:
Datum: NAD27 NAD83 WGS84
County: Elevation: GL KB
Lease Name: Well #:
Well Type: Oil Gas OG WSW Other:
SWD Permit #: ENHR Permit #:
Gas Storage Permit #:
Spud Date: Date Shut-In:

Table with 7 columns: Conductor, Surface, Production, Intermediate, Liner, Tubing. Rows include Size, Setting Depth, Amount of Cement, Top of Cement, Bottom of Cement.

Casing Fluid Level from Surface: How Determined? Date:
Casing Squeeze(s): to w / sacks of cement, to w / sacks of cement. Date:
Do you have a valid Oil & Gas Lease? Yes No
Depth and Type: Junk in Hole at Tools in Hole at Casing Leaks: Yes No Depth of casing leak(s):
Type Completion: ALT. I ALT. II Depth of: DV Tool: w / sacks of cement Port Collar: w / sack of cement
Packer Type: Size: Inch Set at: Feet
Total Depth: Plug Back Depth: Plug Back Method:

Geological Date:

Table with 4 columns: Formation Name, Formation Top, Formation Base, Completion Information. Rows 1 and 2.

UNDER PENALTY OF PERJURY I HEREBY ATTEST THAT THE INFORMATION CONTAINED HEREIN IS TRUE AND CORRECT TO THE BEST OF MY KNOWLEDGE

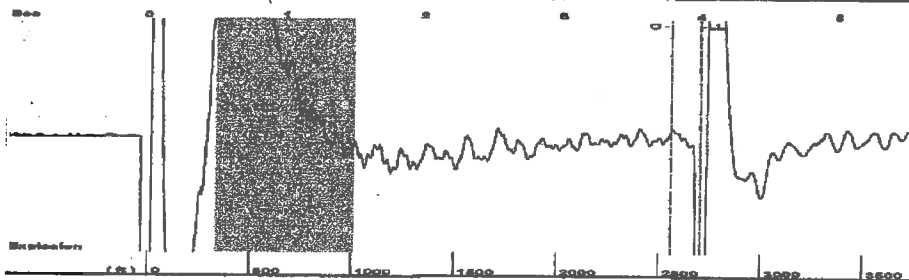
Submitted Electronically

Do NOT Write in This Space - KCC USE ONLY
Date Tested: Results: Date Plugged: Date Repaired: Date Put Back in Service:
Review Completed by: Comments:
TA Approved: Yes Denied Date:

Mail to the Appropriate KCC Conservation Office:

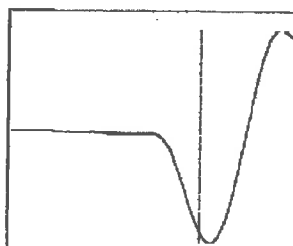
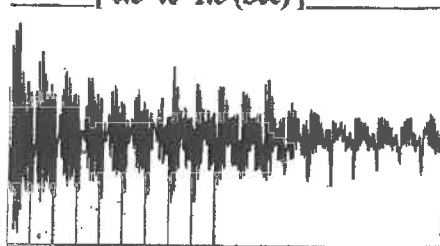
Table with 3 columns: District Office #, Address, Phone. Rows 1-4.

Group: Belpre Well: Aldrich B 2-32 (acquired on: 07/07/22 09:32:31)



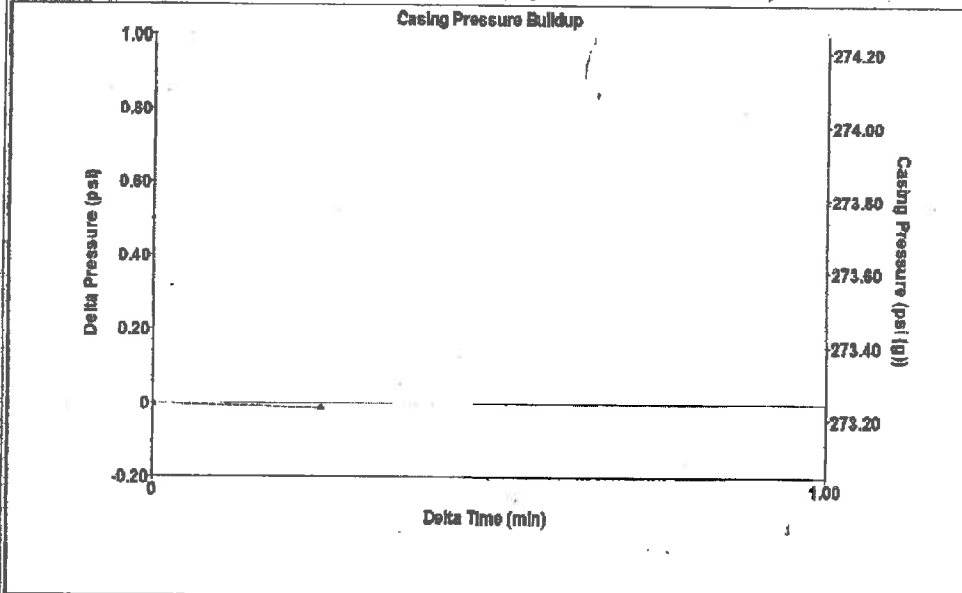
Type High Pass Automatic Collar Count Yes Time 3,996 sec  
 al Acoustic Velo 1343.22 ft/s Manual JTS/sec 21.1864 Joints 85.2389 Jts  
 Depth 2702.07 ft

[ 0.5 to 1.5 (Sec) ]



Analysis Method: Automatic

Group: Belpre Well: Aldrich B 2-32 (acquired on: 07/07/22 09:32:31)



Change in Pressure -0.01 psi PT13440  
 Range 0 - ? psi  
 Change in Time 0.25 min

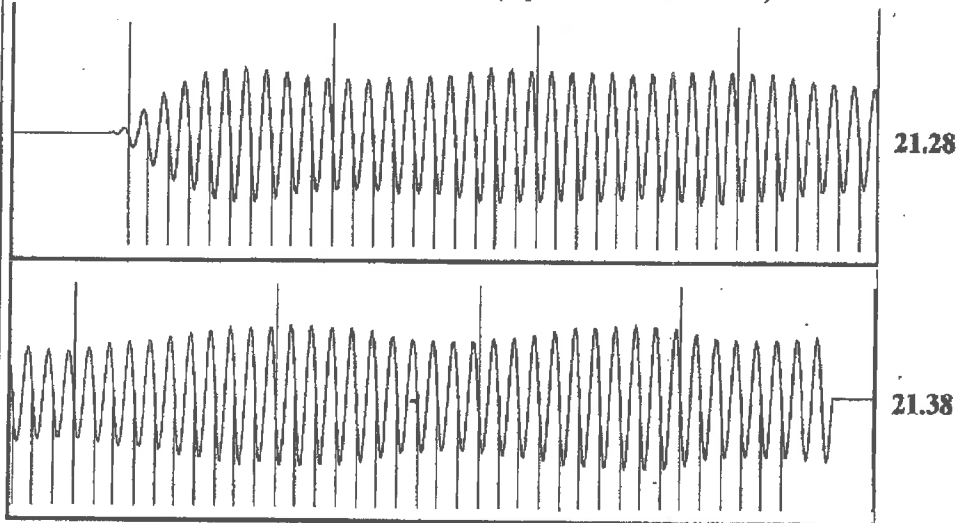
Group: Belpre Well: Aldrich B 2-32 (acquired on: 07/07/22 09:32:31)

Production Current	Potential	Casing Pressure	Producing
-*-	-*- BBL/D	273.2 psi (g)	
er -*-	-*- BBL/D	Casing Pressure Buildup	Annular Gas Flow
-*-	-*- Mscf/D	-0.0 psi	0 Mscf/D
		0.25 min	% Liquid
Method	Vogel	Gas/Liquid Interface Pressure	100 %
IP/SBHP	-*-	291.0 psi (g)	
Production Efficiency	0.0	Liquid Level Depth	
		2702.07 ft	
40 deg.API		Pump Intake Depth	
er 1.05 Sp.Gr.H2O		-*- ft	
0.63 Sp.Gr.AIR		Formation Depth	
Acoustic Velocity	1352.39 ft/s	4308.00 ft	



Pump Intake -\*- psi (g)  
 Producing BHP 1021.2 psi (g)  
 Static BHP -\*- psi (g)

Group: Belpre Well: Aldrich B 2-32 (acquired on: 07/07/22 09:32:31)



Acoustic Velocity	1352.39 ft/s	Joints counted	75
Joints Per Second	21.3311 jts/sec	Joints to liquid level	85.2389
Depth to liquid level	2702.07 ft	Filter Width	19.1864 23.1864
Automatic Collar Count	Yes	Time to 1st Collar	0.268 3.784

July 20, 2022

Loveness Mpanje  
F. G. Holl Company L.L.C.  
9431 E CENTRAL STE 100  
WICHITA, KS 67206-2563

Re: Temporary Abandonment  
API 15-145-21283-00-00  
ALDRICH B 2-32  
NE/4 Sec.32-23S-17W  
Pawnee County, Kansas

Dear Loveness Mpanje:

"Your temporary abandonment (TA) application for the well listed above has been approved. In accordance with K.A.R. 82-3-111 the TA status of this well will expire 07/20/2023.

- \* If you return this well to service or plug it, please notify the District Office.
- \* If you sell this well you are required to file a Transfer of Operator form, T-1.
- \* If the well will remain temporarily abandoned, you must submit a new TA application, CP-111, before 07/20/2023.

You may contact me at the number above if you have questions.

Very truly yours,

Michael Maier"