

KANSAS CORPORATION COMMISSION
OIL & GAS CONSERVATION DIVISION

TEMPORARY ABANDONMENT WELL APPLICATION

OPERATOR: License#
Name:
Address 1:
Address 2:
City: State: Zip:
Contact Person:
Phone:
Contact Person Email:
Field Contact Person:
Field Contact Person Phone:

API No. 15-
Spot Description:
Sec. Twp. S. R.
GPS Location: Lat: Long:
Datum: NAD27 NAD83 WGS84
County: Elevation:
Lease Name: Well #:
Well Type: Oil Gas OG WSW Other:
SWD Permit #: ENHR Permit #:
Gas Storage Permit #:
Spud Date: Date Shut-In:

Table with 7 columns: Conductor, Surface, Production, Intermediate, Liner, Tubing. Rows include Size, Setting Depth, Amount of Cement, Top of Cement, Bottom of Cement.

Casing Fluid Level from Surface: How Determined? Date:
Casing Squeeze(s): to w / sacks of cement, to w / sacks of cement. Date:
Do you have a valid Oil & Gas Lease? Yes No
Depth and Type: Junk in Hole at Tools in Hole at Casing Leaks: Yes No Depth of casing leak(s):
Type Completion: ALT. I ALT. II Depth of: DV Tool: w / sacks of cement Port Collar: w / sack of cement
Packer Type: Size: Inch Set at: Feet
Total Depth: Plug Back Depth: Plug Back Method:

Geological Date:

Table with 4 columns: Formation Name, Formation Top, Formation Base, Completion Information. Rows 1 and 2.

UNDER PENALTY OF PERJURY I HEREBY ATTEST THAT THE INFORMATION CONTAINED HEREIN IS TRUE AND CORRECT TO THE BEST OF MY KNOWLEDGE

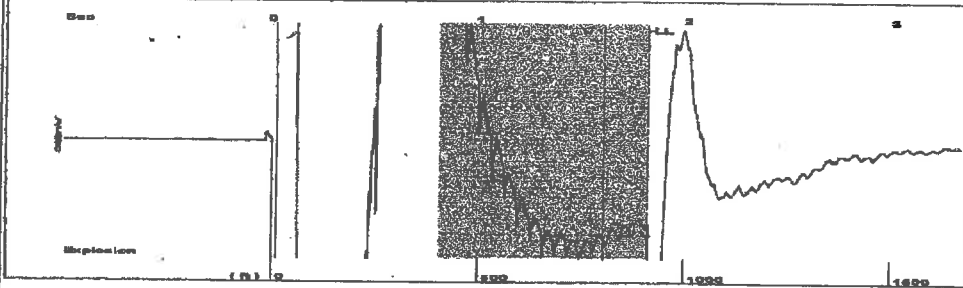
Submitted Electronically

Do NOT Write in This Space - KCC USE ONLY
Date Tested: Results: Date Plugged: Date Repaired: Date Put Back in Service:
Review Completed by: Comments:
TA Approved: Yes Denied Date:

Mail to the Appropriate KCC Conservation Office:

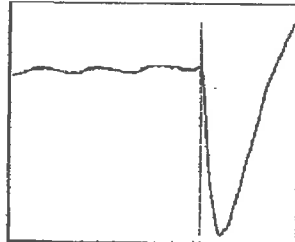
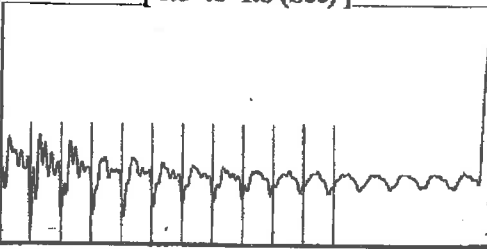
Table with 3 columns: District Office #, Address, Phone. Rows 1-4.

Group: Belpre Well: Embry a 2-23 (acquired on: 07/07/22 10:31:18 )



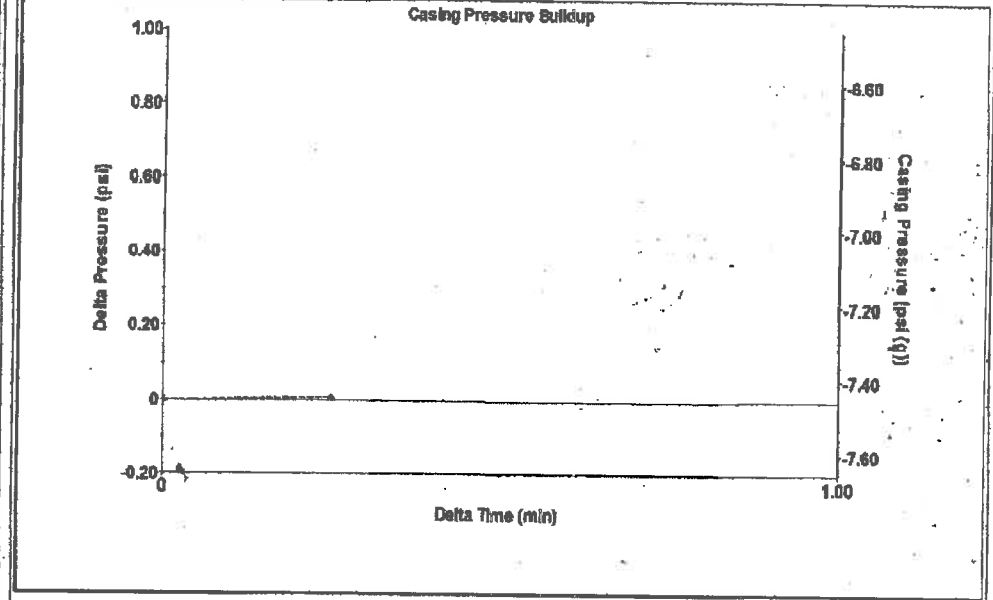
Filter Type High Pass Automatic Collar Count Yes Time 1.81 sec  
 Manual Acoustic Velocity 991.026 ft/s Manual JTS/sec 16.0256 Joints 29.5109 Jts  
 Depth 912.48 ft

[ 0.8 to 1.8 (Sec) ]



Analysis Method: Automatic

Group: Belpre Well: Embry a 2-23 (acquired on: 07/07/22 10:31:18 )

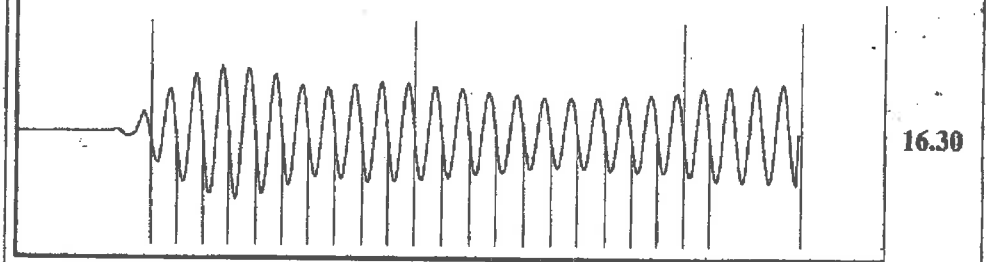


Change in Pressure 0.01 psi PT13440  
 Change in Time 0.25 min Range 0 - 7 psi

Group: Belpre Well: Embry a 2-23 (acquired on: 07/07/22 10:31:18 )

<b>Production</b> Current Potential Oil +- -+ BBL/D Water +- -+ BBL/D Gas +- -+ Mscf/D  IPR Method Vogel PBHP/SBHP -+ -+ Production Efficiency 0.0  Oil 40 deg.API Water 1.05 Sp.Gr.H2O Gas 0.96 Sp.Gr.AIR  Acoustic Velocity 1008.26 ft/s  Formation Submergence Total Gaseous Liquid Column HT (TVD) 2892 ft Equivalent Gas Free Liquid HT (TVD) 2892 ft  Acoustic Test		<b>Producing</b> Casing Pressure -7.5 psi (g) Casing Pressure Buildup 0.006 psi 0.25 min Gas/Liquid Interface Pressure -7.2 psi (g)  Liquid Level Depth 912.48 ft  Pump Intake Depth 3804.00 ft Formation Depth 3784.00 ft  Annular Gas Flow 0 Mscf/D % Liquid 100 %  Pump Intake 944.6 psi (g) Producing BHP 938.5 psi (g) Static BHP -+ -+ psi (g)
---	--	--

Group: Belpre Well: Embry a 2-23 (acquired on: 07/07/22 10:31:18 )



Acoustic Velocity 1008.26 ft/s Joints counted 21  
 Joints Per Second 16.3043 jts/sec Joints to liquid level 29.5109  
 Depth to liquid level 912.476 ft Filter Width 14.0256 18.0256  
 Automatic Collar Count Yes Time to 1st Collar 0.308 1.596

Conservation Division  
District Office No. 1  
210 E. Frontview, Suite A  
Dodge City, KS 67801



Phone: 620-682-7933  
<http://kcc.ks.gov/>

Dwight D. Keen, Chair  
Susan K. Duffy, Commissioner  
Andrew J. French, Commissioner

Laura Kelly, Governor

July 20, 2022

Loveness Mpanje  
F. G. Holl Company L.L.C.  
9431 E CENTRAL STE 100  
WICHITA, KS 67206-2563

Re: Temporary Abandonment  
API 15-047-20806-00-00  
EMBRY - A 2-23  
NW/4 Sec.23-24S-16W  
Edwards County, Kansas

Dear Loveness Mpanje:

"Your temporary abandonment (TA) application for the well listed above has been approved. In accordance with K.A.R. 82-3-111 the TA status of this well will expire 07/20/2023.

- \* If you return this well to service or plug it, please notify the District Office.
- \* If you sell this well you are required to file a Transfer of Operator form, T-1.
- \* If the well will remain temporarily abandoned, you must submit a new TA application, CP-111, before 07/20/2023.

You may contact me at the number above if you have questions.

Very truly yours,

Michael Maier"