

KANSAS CORPORATION COMMISSION
OIL & GAS CONSERVATION DIVISION

TEMPORARY ABANDONMENT WELL APPLICATION

OPERATOR: License#
Name:
Address 1:
Address 2:
City: State: Zip:
Contact Person:
Phone:
Contact Person Email:
Field Contact Person:
Field Contact Person Phone:

API No. 15-
Spot Description:
Sec. Twp. S. R.
GPS Location: Lat: Long:
Datum: NAD27 NAD83 WGS84
County: Elevation:
Lease Name: Well #:
Well Type: Oil Gas OG WSW Other:
SWD Permit #: ENHR Permit #:
Gas Storage Permit #:
Spud Date: Date Shut-In:

Table with 7 columns: Conductor, Surface, Production, Intermediate, Liner, Tubing. Rows include Size, Setting Depth, Amount of Cement, Top of Cement, Bottom of Cement.

Casing Fluid Level from Surface: How Determined? Date:
Casing Squeeze(s): to w / sacks of cement, to w / sacks of cement. Date:
Do you have a valid Oil & Gas Lease? Yes No
Depth and Type: Junk in Hole at Tools in Hole at Casing Leaks: Yes No Depth of casing leak(s):
Type Completion: ALT. I ALT. II Depth of: DV Tool: w / sacks of cement Port Collar: w / sack of cement
Packer Type: Size: Inch Set at: Feet
Total Depth: Plug Back Depth: Plug Back Method:

Geological Data:

Table with 4 columns: Formation Name, Formation Top, Formation Base, Completion Information. Rows 1 and 2.

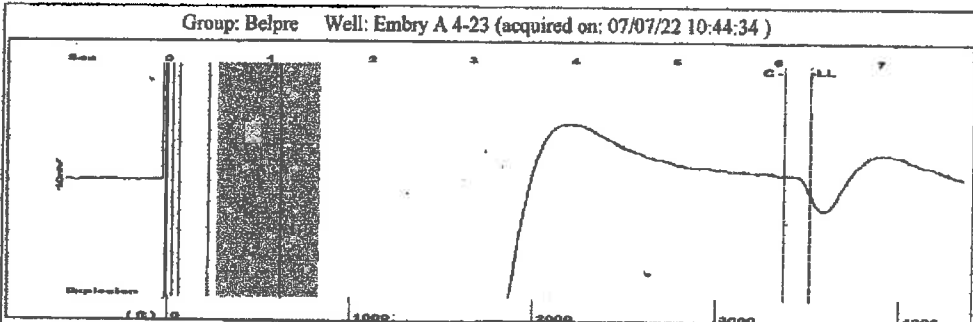
UNDER PENALTY OF PERJURY I HEREBY ATTEST THAT THE INFORMATION CONTAINED HEREIN IS TRUE AND CORRECT TO THE BEST OF MY KNOWLEDGE

Submitted Electronically

Do NOT Write in This Space - KCC USE ONLY
Date Tested: Results: Date Plugged: Date Repaired: Date Put Back in Service:
Review Completed by: Comments:
TA Approved: Yes Denied Date:

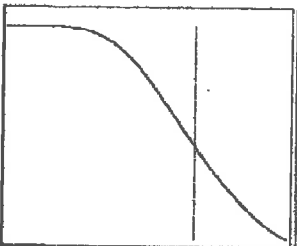
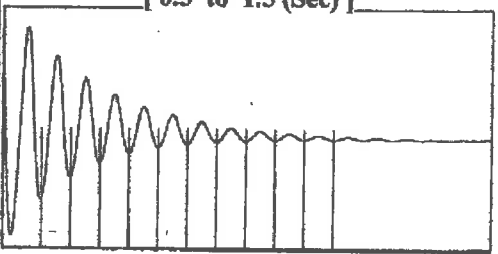
Mail to the Appropriate KCC Conservation Office:

Map of Kansas with 4 numbered districts and corresponding office addresses and phone numbers.

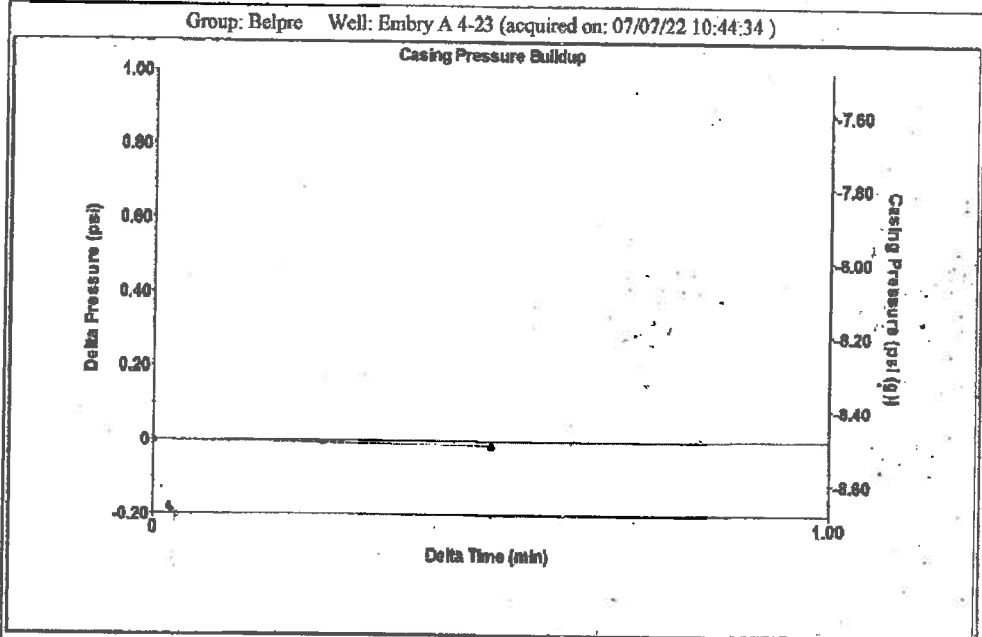


Group: Belpre Well: Embry A 4-23 (acquired on: 07/07/22 10:44:34)

Filter Type	High Pass	Automatic Collar Count	Yes	Time	6.318 sec
Manual Acoustic Velocity	1066.11 ft/s	Manual JTS/sec	16.6945	Joints	109.945 Jts
				Depth	3510.53 ft



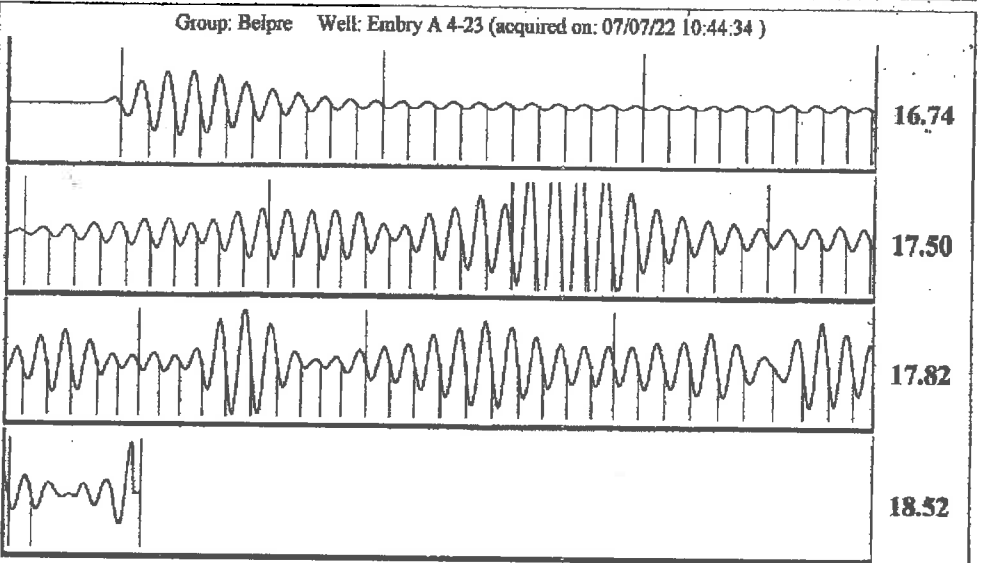
Analysis Method: Automatic



Change in Pressure	-0.01 psi	PT13440
Change in Time	0.50 min	Range
		0 - 7 psi

Group: Belpre Well: Embry A 4-23 (acquired on: 07/07/22 10:44:34)

Production	Potential	Casing Pressure	Producing
Current		-8.5 psi (g)	
Oil -*- BBL/D		Casing Pressure Buildup	
Water -*- BBL/D		-0.013 psi	
Gas -*- Mscf/D		0.50 min	
		Gas/Liquid Interface Pressure	
		-7.8 psi (g)	
IPR Method	Vogel	Liquid Level Depth	Annular Gas Flow
FBHP/SBHP		3510.53 ft	0 Mscf/D
Production Efficiency	0.0	Pump Intake Depth	% Liquid
		3992.00 ft	100 %
Oil 40 deg.API		Formation Depth	
Water 1.05 Sp.Gr.H2O		3785.00 ft	
Gas 0.88 Sp.Gr.AIR			
Acoustic Velocity	1111.28 ft/s		
		Pump Intake	
		156.0 psi (g)	
		Producing BHP	
		85.9 psi (g)	
		Static BHP	
		-*- psi (g)	
Formation Submergence			
Total Gaseous Liquid Column HT (TVD)	481 ft		
Equivalent Gas Free Liquid HT (TVD)	481 ft		
Acoustic Test			



Acoustic Velocity	1111.28 ft/s	Joints counted	101
Joints Per Second	17.4018 jts/sec	Joints to liquid level	109.945
Depth to liquid level	3510.53 ft	Filter Width	14.6945
Automatic Collar Count	Yes	Time to 1st Collar	0.26
			6.064

Conservation Division
District Office No. 1
210 E. Frontview, Suite A
Dodge City, KS 67801



Phone: 620-682-7933
<http://kcc.ks.gov/>

Dwight D. Keen, Chair
Susan K. Duffy, Commissioner
Andrew J. French, Commissioner

Laura Kelly, Governor

July 20, 2022

Loveness Mpanje
F. G. Holl Company L.L.C.
9431 E CENTRAL STE 100
WICHITA, KS 67206-2563

Re: Temporary Abandonment
API 15-047-20944-00-00
EMBRY - A 4-23
NW/4 Sec.23-24S-16W
Edwards County, Kansas

Dear Loveness Mpanje:

"Your temporary abandonment (TA) application for the well listed above has been approved. In accordance with K.A.R. 82-3-111 the TA status of this well will expire 07/20/2023.

- * If you return this well to service or plug it, please notify the District Office.
- * If you sell this well you are required to file a Transfer of Operator form, T-1.
- * If the well will remain temporarily abandoned, you must submit a new TA application, CP-111, before 07/20/2023.

You may contact me at the number above if you have questions.

Very truly yours,

Michael Maier"