

KANSAS CORPORATION COMMISSION
OIL & GAS CONSERVATION DIVISION

TEMPORARY ABANDONMENT WELL APPLICATION

OPERATOR: License#
Name:
Address 1:
Address 2:
City: State: Zip:
Contact Person:
Phone:
Contact Person Email:
Field Contact Person:
Field Contact Person Phone:

API No. 15-
Spot Description:
Sec. Twp. S. R.
GPS Location: Lat, Long
Datum: NAD27, NAD83, WGS84
County: Elevation:
Lease Name: Well #:
Well Type: Oil, Gas, OG, WSW, Other
SWD Permit #: ENHR Permit #:
Gas Storage Permit #:
Spud Date: Date Shut-In:

Table with 7 columns: Conductor, Surface, Production, Intermediate, Liner, Tubing. Rows include Size, Setting Depth, Amount of Cement, Top of Cement, Bottom of Cement.

Casing Fluid Level from Surface: How Determined? Date:
Casing Squeeze(s): to w / sacks of cement, to w / sacks of cement. Date:
Do you have a valid Oil & Gas Lease? Yes No
Depth and Type: Junk in Hole at Tools in Hole at Casing Leaks: Yes No Depth of casing leak(s):
Type Completion: ALT. I ALT. II Depth of: DV Tool: w / sacks of cement Port Collar: w / sack of cement
Packer Type: Size: Inch Set at: Feet
Total Depth: Plug Back Depth: Plug Back Method:

Geological Data:

Table with 4 columns: Formation Name, Formation Top, Formation Base, Completion Information. Rows 1 and 2.

UNDER PENALTY OF PERJURY I HEREBY ATTEST THAT THE INFORMATION CONTAINED HEREIN IS TRUE AND CORRECT TO THE BEST OF MY KNOWLEDGE

Submitted Electronically

Do NOT Write in This Space - KCC USE ONLY
Date Tested: Results: Date Plugged: Date Repaired: Date Put Back in Service:
Review Completed by: Comments:
TA Approved: Yes Denied Date:

Mail to the Appropriate KCC Conservation Office:

Table with 2 columns: Office Address, Phone. Rows for District Office #1, #2, #3, #4.

Liquid Level

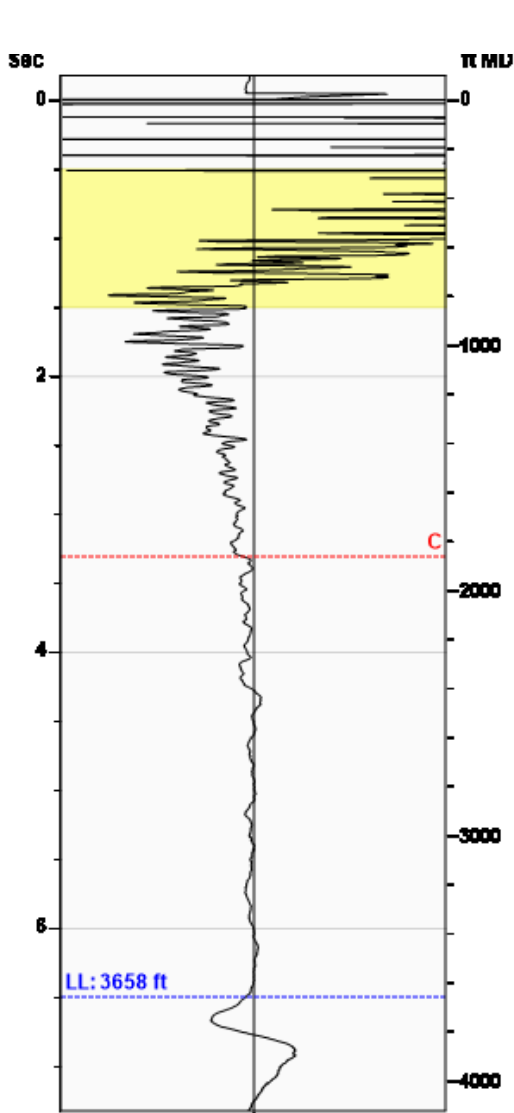
3658 ft MD

Fluid Above Pump

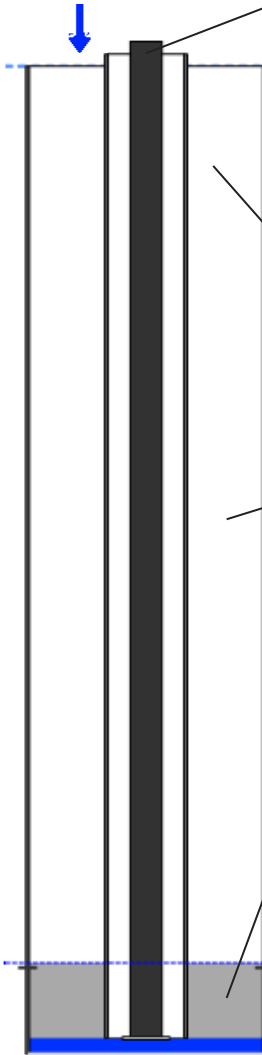
306 ft TVD

Equivalent Gas Free Above Pump

300 ft TVD



Gun - WRFG 721



Production

Date Entered	07/20/22		
	Current	Potential	
Oil	**	**	BBL/D
Water	**	**	BBL/D
Gas	**	**	Mscf/D
IPR Method	Vogel		
PBHP/SBHP	-0.00		
Producing Efficiency	0.00%		

Casing Pressure

Pressure	-0.4 psi (g)
----------	--------------

Annular Gas Flow

Gas Flow	3.5 Mscf/D
----------	------------

Fluid Properties

% Liquid Above Pump	78.72%
% Liquid Below Pump	**

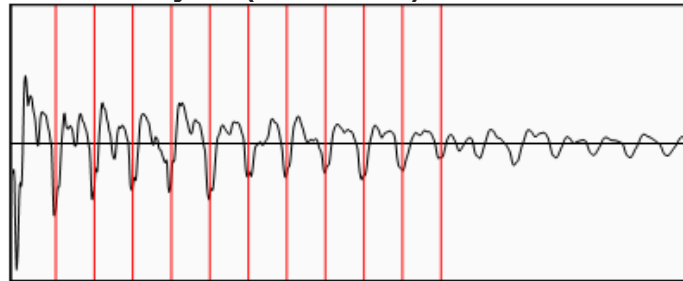
Wellbore Pressures

PIP	103.2 psi (g) @ 3964 ft
PBHP	9.3 psi (g) @ 3688 ft
SBHP	**
Gas/Liq Interface	1.2 psi (g) @ 3658 ft

Depths

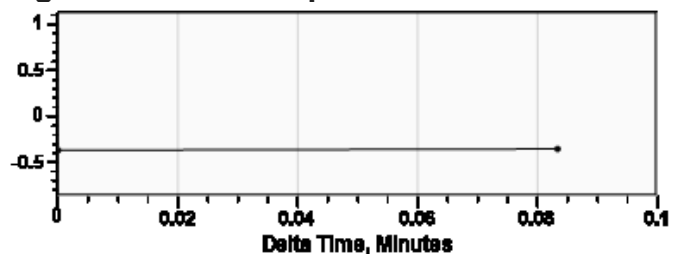
Pump Intake Depth	3964 ft
Formation Depth	3688 ft

Collar Analysis (Automatic)



Average Acoustic Velocity	1126 ft/s
Average Joints Per Sec.	17.76 Jts/sec
Joints To Liquid	115.39 Jts

Casing Pressure Buildup



Casing Pressure	-0.4 psi (g)
Buildup	0.0 psi (g)
Buildup Time	5 sec
Gas Gravity from Collar Analysis (Automatic)	0.8715 Air = 1

Comments and Recommendations

Echometer Company
 5001 Ditto Lane
 Wichita Falls, TX 76302
 (940) 767-4334
 info@echometer.com

Conservation Division
District Office No. 4
2301 E. 13th Street
Hays, KS 67601-2651



Phone: 785-261-6250
Fax: 785-625-0564
<http://kcc.ks.gov/>

Dwight D. Keen, Chair
Susan K. Duffy, Commissioner
Andrew J. French, Commissioner

Laura Kelly, Governor

July 21, 2022

Trevor Calvin
Kansas Crude Investments LLC
1593 220TH AVE
HAYS, KS 67601-9306

Re: Temporary Abandonment
API 15-195-20744-00-01
HILLMAN 1
NE/4 Sec.35-11S-22W
Trego County, Kansas

Dear Trevor Calvin:

"Your temporary abandonment (TA) application for the well listed above has been approved. In accordance with K.A.R. 82-3-111 the TA status of this well will expire 07/21/2023.

- * If you return this well to service or plug it, please notify the District Office.
- * If you sell this well you are required to file a Transfer of Operator form, T-1.
- * If the well will remain temporarily abandoned, you must submit a new TA application, CP-111, before 07/21/2023.

You may contact me at the number above if you have questions.

Very truly yours,

RICHARD WILLIAMS"