

KANSAS CORPORATION COMMISSION
OIL & GAS CONSERVATION DIVISION

TEMPORARY ABANDONMENT WELL APPLICATION

OPERATOR: License#
Name:
Address 1:
Address 2:
City: State: Zip:
Contact Person:
Phone:
Contact Person Email:
Field Contact Person:
Field Contact Person Phone:

API No. 15-
Spot Description:
Sec. Twp. S. R.
feet from N / S Line of Section
feet from E / W Line of Section
GPS Location: Lat: , Long:
Datum: NAD27 NAD83 WGS84
County: Elevation: GL KB
Lease Name: Well #:
Well Type: (check one) Oil Gas OG WSW Other:
SWD Permit #: ENHR Permit #:
Gas Storage Permit #:
Spud Date: Date Shut-In:

Table with 7 columns: Conductor, Surface, Production, Intermediate, Liner, Tubing. Rows include Size, Setting Depth, Amount of Cement, Top of Cement, Bottom of Cement.

Casing Fluid Level from Surface: How Determined? Date:
Casing Squeeze(s): to w / sacks of cement, to w / sacks of cement. Date:
Do you have a valid Oil & Gas Lease? Yes No
Depth and Type: Junk in Hole at Tools in Hole at Casing Leaks: Yes No Depth of casing leak(s):
Type Completion: ALT. I ALT. II Depth of: DV Tool: w / sacks of cement Port Collar: w / sack of cement
Packer Type: Size: Inch Set at: Feet
Total Depth: Plug Back Depth: Plug Back Method:

Geological Data:

Table with 4 columns: Formation Name, Formation Top, Formation Base, Completion Information. Rows 1 and 2.

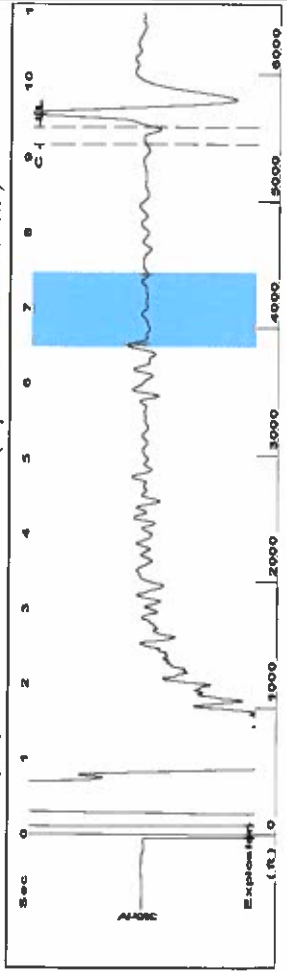
UNDER PENALTY OF PERJURY I HEREBY ATTEST THAT THE INFORMATION CONTAINED HEREIN IS TRUE AND CORRECT TO THE BEST OF MY KNOWLEDGE

Submitted Electronically

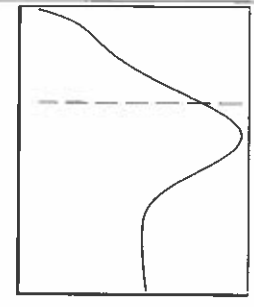
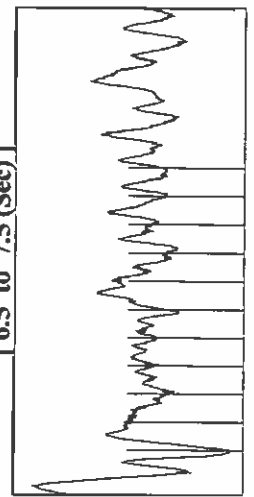
Do NOT Write in This Space - KCC USE ONLY
Date Tested: Results: Date Plugged: Date Repaired: Date Put Back in Service:
Review Completed by: Comments:
TA Approved: Yes Denied Date:

Mail to the Appropriate KCC Conservation Office:

Table with 3 columns: District Office #, Address, Phone. Rows 1-4.



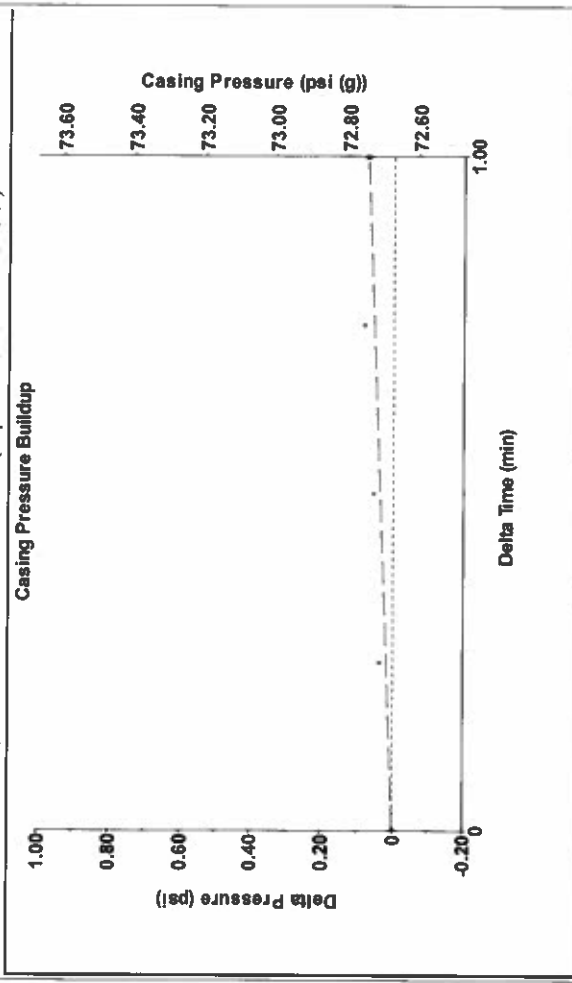
Filter Type High Pass Automatic Collar Count Yes
 Manual Acoustic Veloc 1094.99 ft/s Manual JTS/sec 17.2712
 Time 9.408 sec
 Joints 176.215 Jts
 Depth 5386.03 ft



Analysis Method: Automatic

Production	Potential	Casing Pressure	72.7 psi (g)
Oil -*- BBL/D	-*- BBL/D	Casing Pressure Buildup	0.1 psi
Water -*-	-*- Mscf/D	Gas/Liquid Interface Pressure	1.00 min
Gas -*-		Liquid Level Depth	5586.03 ft
IPR Method Vogel		Pump Intake Depth	5594.00 ft
PBHP/SBHP -*-		Formation Depth	5594.00 ft
Production Efficiency 0.0		Acoustic Velocity	1187.51 ft/s
Oil 40 deg-API		Formation Submergence	8 ft
Water 1.05 Sp.Gr.H2O		Total Gaseous Liquid Column HT (TVD)	7 ft
Gas 0.80 Sp.Gr.AIR		Equivalent Gas Free Liquid HT (TVD)	
Acoustic Test			

Producing	Annular	Gas Flow	2 Mscf/D
% Liquid			85 %
Pump Intake			
89.2 psi (g)			
Producing BHP			
89.2 psi (g)			
Static BHP			
-*- psi (g)			



Change in Pressure 0.07 psi
 Change in Time 1.00 min
 PTI 4654
 Range

Group: MyWells Well: Brian Daniels 1-34 (acquired on: 07/12/21 09:44:45)	18.82	18.81	18.84	18.35	18.91
Acoustic Velocity	1187.51 ft/s	Joints counted	167		
Joints Per Second	18.7304 jts/sec	Joints to liquid level	176.215		
Depth to liquid level	5586.03 ft	Filter Width	15.2712		19.2712
Automatic Collar Count	Yes	Time to 1st Collar	0.264		9.18

July 25, 2022

Katherine McClurkan
Merit Energy Company, LLC
13727 Noel Road, Suite 1200
Dallas, TX 75240-7362

Re: Temporary Abandonment
API 15-187-20787-00-00
Brian Daniel 1-34
NE/4 Sec.34-29S-40W
Stanton County, Kansas

Dear Katherine McClurkan:

"Your temporary abandonment (TA) application for the well listed above has been approved. In accordance with K.A.R. 82-3-111 the TA status of this well will expire 07/25/2023.

- * If you return this well to service or plug it, please notify the District Office.
- * If you sell this well you are required to file a Transfer of Operator form, T-1.
- * If the well will remain temporarily abandoned, you must submit a new TA application, CP-111, before 07/25/2023.

You may contact me at the number above if you have questions.

Very truly yours,

Michael Maier"