

KANSAS CORPORATION COMMISSION
OIL & GAS CONSERVATION DIVISION

TEMPORARY ABANDONMENT WELL APPLICATION

OPERATOR: License#
Name:
Address 1:
Address 2:
City: State: Zip:
Contact Person:
Phone:
Contact Person Email:
Field Contact Person:
Field Contact Person Phone:

API No. 15-
Spot Description:
Sec. Twp. S. R.
GPS Location: Lat: Long:
Datum: NAD27 NAD83 WGS84
County: Elevation:
Lease Name: Well #:
Well Type: Oil Gas OG WSW Other:
SWD Permit #: ENHR Permit #:
Gas Storage Permit #:
Spud Date: Date Shut-In:

Table with 7 columns: Conductor, Surface, Production, Intermediate, Liner, Tubing. Rows include Size, Setting Depth, Amount of Cement, Top of Cement, Bottom of Cement.

Casing Fluid Level from Surface: How Determined? Date:
Casing Squeeze(s): to w / sacks of cement, to w / sacks of cement. Date:
Do you have a valid Oil & Gas Lease? Yes No
Depth and Type: Junk in Hole at Tools in Hole at Casing Leaks: Yes No Depth of casing leak(s):
Type Completion: ALT. I ALT. II Depth of: DV Tool: w / sacks of cement Port Collar: w / sack of cement
Packer Type: Size: Inch Set at: Feet
Total Depth: Plug Back Depth: Plug Back Method:

Geological Data:

Table with 4 columns: Formation Name, Formation Top, Formation Base, Completion Information. Rows 1 and 2.

UNDER PENALTY OF PERJURY I HEREBY ATTEST THAT THE INFORMATION CONTAINED HEREIN IS TRUE AND CORRECT TO THE BEST OF MY KNOWLEDGE

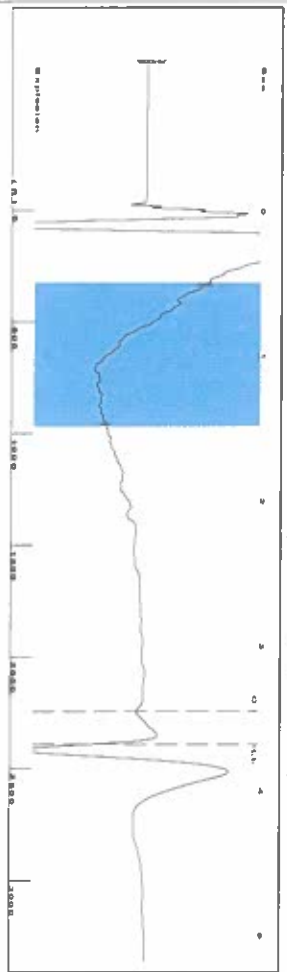
Submitted Electronically

Do NOT Write in This Space - KCC USE ONLY
Date Tested: Results: Date Plugged: Date Repaired: Date Put Back in Service:
Review Completed by: Comments:
TA Approved: Yes Denied Date:

Mail to the Appropriate KCC Conservation Office:

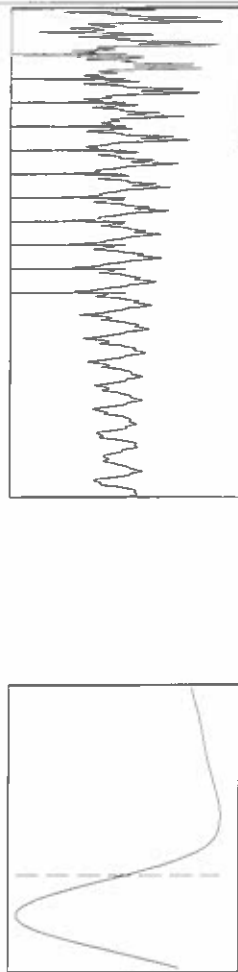
Table with 2 columns: Office Address, Phone. Rows for KCC District Office #1, #2, #3, #4.

Group: SUBLETTE Well: Anton 3-21 (acquired on: 07/21/22 13:38:46)



Filter Type High Pass
 Manual Acoustic Velo 1299.18 ft/s
 Automatic Collar Count Yes
 Manual JTS/sec 20.4918
 Time 3.684 sec
 Joints 75.3967 Jts
 Depth 2390.08 ft

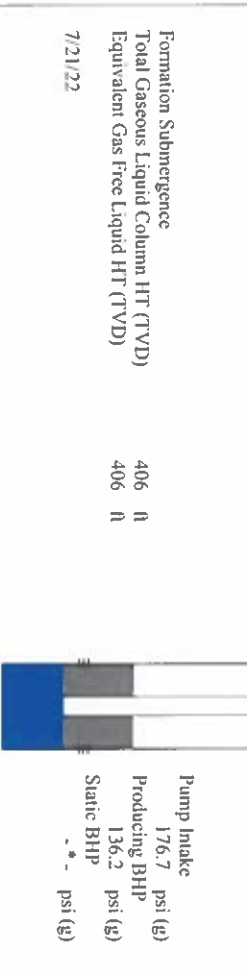
0.5 to 1.5 (Sec)



Analysis Method: Automatic

Group: SUBLETTE Well: Anton 3-21 (acquired on: 07/21/22 13:38:46)

Production	Potential	Casing Pressure	Producing
Oil Current	Oil - * -	37.1 psi (g)	Annular Gas Flow
Water - * -	Water - * -	Casing Pressure Buildup	% Liquid
Gas - * -	Gas - * -	-0.009 psi	100 %
IPR Method	Vogel	Gas/Liquid Interface Pressure	
PBHP/SBHP	0.0	40.1 psi (g)	
Production Efficiency		Liquid Level Depth	
		2390.08 ft	
Oil 40 deg API		Pump Intake Depth	
Water 1.05 Sp.Gr.H2O		2796.00 ft	
Gas 0.70 Sp.Gr.AIR		Formation Depth	
		2675.00 ft	
Acoustic Velocity	1297.54 ft/s		

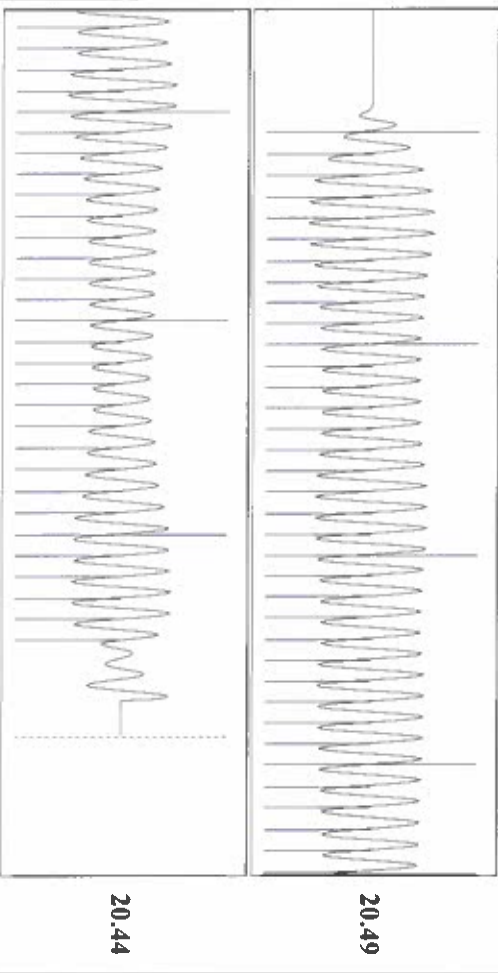


Group: SUBLETTE Well: Anton 3-21 (acquired on: 07/21/22 13:38:46)



Change in Pressure -0.01 psi
 Change in Time 1.00 min
 PT16716
 Range 0 - ? psi

Group: SUBLETTE Well: Anton 3-21 (acquired on: 07/21/22 13:38:46)



Acoustic Velocity	1297.54 ft/s	Joints counted	65
Joints Per Second	20.466 Jts/sec	Joints to liquid level	75.3967
Depth to liquid level	2390.08 ft	Filter Width	18.4918
Automatic Collar Count	Yes	Time to 1st Collar	0.284

Conservation Division
District Office No. 1
210 E. Frontview, Suite A
Dodge City, KS 67801



Phone: 620-682-7933
<http://kcc.ks.gov/>

Dwight D. Keen, Chair
Susan K. Duffy, Commissioner
Andrew J. French, Commissioner

Laura Kelly, Governor

July 25, 2022

Katherine McClurkan
Merit Energy Company, LLC
13727 Noel Road, Suite 1200
DALLAS, TX 75240-7362

Re: Temporary Abandonment
API 15-081-21834-00-00
Anton 3-21
NE/4 Sec.21-30S-33W
Haskell County, Kansas

Dear Katherine McClurkan:

"Your temporary abandonment (TA) application for the well listed above has been approved. In accordance with K.A.R. 82-3-111 the TA status of this well will expire 07/25/2023.

- * If you return this well to service or plug it, please notify the District Office.
- * If you sell this well you are required to file a Transfer of Operator form, T-1.
- * If the well will remain temporarily abandoned, you must submit a new TA application, CP-111, before 07/25/2023.

You may contact me at the number above if you have questions.

Very truly yours,

Michael Maier"