

KANSAS CORPORATION COMMISSION
OIL & GAS CONSERVATION DIVISION

TEMPORARY ABANDONMENT WELL APPLICATION

OPERATOR: License#
Name:
Address 1:
Address 2:
City: State: Zip:
Contact Person:
Phone:
Contact Person Email:
Field Contact Person:
Field Contact Person Phone:

API No. 15-
Spot Description:
Sec. Twp. S. R.
GPS Location: Lat: Long:
Datum: NAD27 NAD83 WGS84
County: Elevation:
Lease Name: Well #:
Well Type: Oil Gas OG WSW Other:
SWD Permit #: ENHR Permit #:
Gas Storage Permit #:
Spud Date: Date Shut-In:

Table with 7 columns: Conductor, Surface, Production, Intermediate, Liner, Tubing. Rows include Size, Setting Depth, Amount of Cement, Top of Cement, Bottom of Cement.

Casing Fluid Level from Surface: How Determined? Date:
Casing Squeeze(s): to w / sacks of cement, to w / sacks of cement. Date:
Do you have a valid Oil & Gas Lease? Yes No
Depth and Type: Junk in Hole at Tools in Hole at Casing Leaks: Yes No Depth of casing leak(s):
Type Completion: ALT. I ALT. II Depth of: DV Tool: w / sacks of cement Port Collar: w / sack of cement
Packer Type: Size: Inch Set at: Feet
Total Depth: Plug Back Depth: Plug Back Method:

Geological Data:

Table with 4 columns: Formation Name, Formation Top, Formation Base, Completion Information. Rows 1 and 2.

UNDER PENALTY OF PERJURY I HEREBY ATTEST THAT THE INFORMATION CONTAINED HEREIN IS TRUE AND CORRECT TO THE BEST OF MY KNOWLEDGE

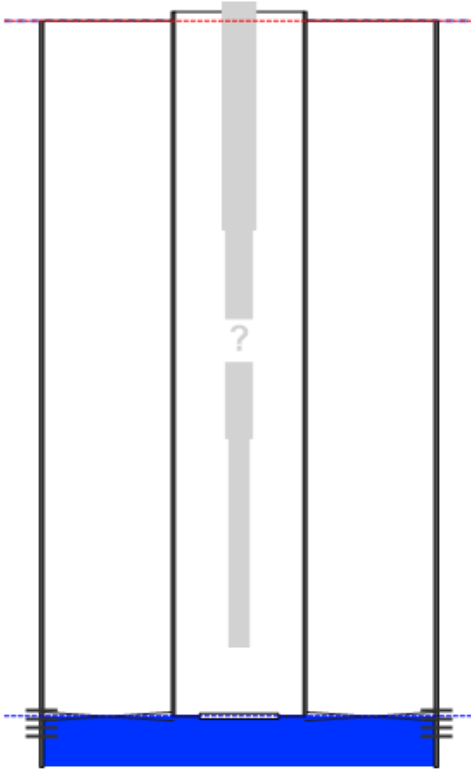
Submitted Electronically

Form with fields: Do NOT Write in This Space - KCC USE ONLY, Date Tested, Results, Date Plugged, Date Repaired, Date Put Back in Service, Review Completed by, Comments, TA Approved: Yes Denied, Date.

Mail to the Appropriate KCC Conservation Office:

Table with 3 columns: District Office (1-4), Address, Phone number.

**Producing Shot
Manual Input**



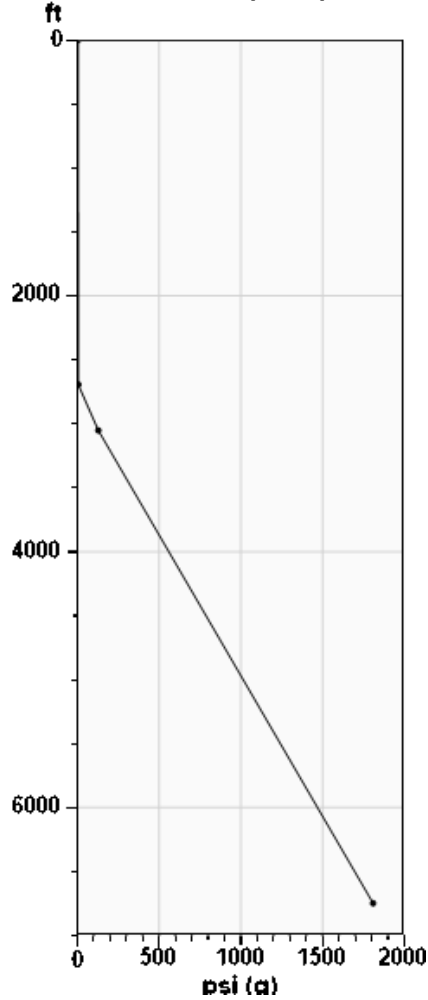
Manually Entered Production

Liquid Level 6285 ft
Percent Liquid 100.00%

**Static Bottomhole Pressure
1711.4 psi (g) @ 6534 ft TVD**

Static Liquid Level 2693 ft MD
Oil Column Height 359 ft MD
Water Column Height 3482 ft MD

Pressure Profile (TVD)

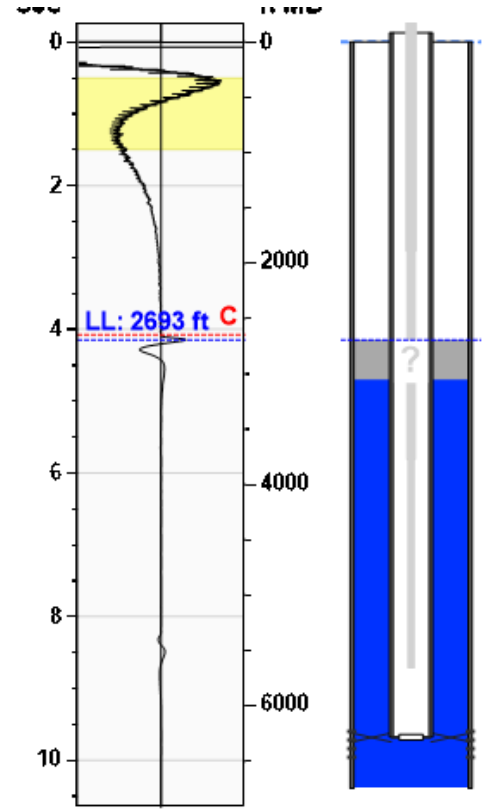


Well Test

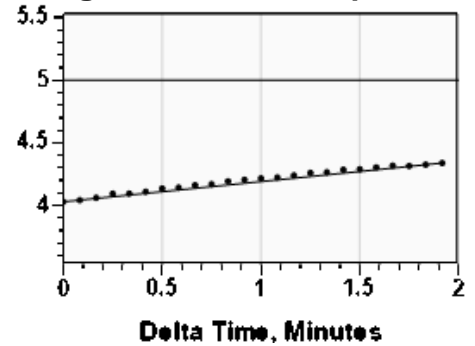
Oil 10 BBL/D
Water 90 BBL/D

**Comments and
Recommendations**

**Static Shot
07/20/2022 01:24:34PM**



Casing Pressure Buildup



Casing Pressure 4.0 psi (g)
Buildup 0.3 psi (g)
Buildup Time 1 min 55 sec
Gas Gravity 0.6893 Air = 1

Casing Pressure

Pressure 4.0 psi (g)

Annular Gas Flow

Gas Flow 2.4 Mscf/D

Conservation Division
District Office No. 1
210 E. Frontview, Suite A
Dodge City, KS 67801



Phone: 620-682-7933
<http://kcc.ks.gov/>

Dwight D. Keen, Chair
Susan K. Duffy, Commissioner
Andrew J. French, Commissioner

Laura Kelly, Governor

July 28, 2022

Liv Adams
XTO Energy Inc.
210 PARK AVE STE 2240
OKLAHOMA CITY, OK 73102

Re: Temporary Abandonment
API 15-189-20491-00-01
MAHONEY 1-2
NW/4 Sec.02-35S-35W
Stevens County, Kansas

Dear Liv Adams:

"Your temporary abandonment (TA) application for the well listed above has been approved. In accordance with K.A.R. 82-3-111 the TA status of this well will expire 07/28/2023.

- * If you return this well to service or plug it, please notify the District Office.
- * If you sell this well you are required to file a Transfer of Operator form, T-1.
- * If the well will remain temporarily abandoned, you must submit a new TA application, CP-111, before 07/28/2023.

You may contact me at the number above if you have questions.

Very truly yours,

Michael Maier"