

KANSAS CORPORATION COMMISSION
OIL & GAS CONSERVATION DIVISION

TEMPORARY ABANDONMENT WELL APPLICATION

OPERATOR: License#
Name:
Address 1:
Address 2:
City: State: Zip:
Contact Person:
Phone:
Contact Person Email:
Field Contact Person:
Field Contact Person Phone:

API No. 15-
Spot Description:
Sec. Twp. S. R.
feet from N / S Line of Section
feet from E / W Line of Section
GPS Location: Lat: , Long:
Datum: NAD27 NAD83 WGS84
County: Elevation: GL KB
Lease Name: Well #:
Well Type: Oil Gas OG WSW Other:
SWD Permit #: ENHR Permit #:
Gas Storage Permit #:
Spud Date: Date Shut-In:

Table with 7 columns: Conductor, Surface, Production, Intermediate, Liner, Tubing. Rows include Size, Setting Depth, Amount of Cement, Top of Cement, Bottom of Cement.

Casing Fluid Level from Surface: How Determined? Date:
Casing Squeeze(s): to w / sacks of cement, to w / sacks of cement. Date:
Do you have a valid Oil & Gas Lease? Yes No
Depth and Type: Junk in Hole at Tools in Hole at Casing Leaks: Yes No Depth of casing leak(s):
Type Completion: ALT. I ALT. II Depth of: DV Tool: w / sacks of cement Port Collar: w / sack of cement
Packer Type: Size: Inch Set at: Feet
Total Depth: Plug Back Depth: Plug Back Method:

Geological Data:

Table with 4 columns: Formation Name, Formation Top, Formation Base, Completion Information. Rows 1 and 2.

UNDER PENALTY OF PERJURY I HEREBY ATTEST THAT THE INFORMATION CONTAINED HEREIN IS TRUE AND CORRECT TO THE BEST OF MY KNOWLEDGE

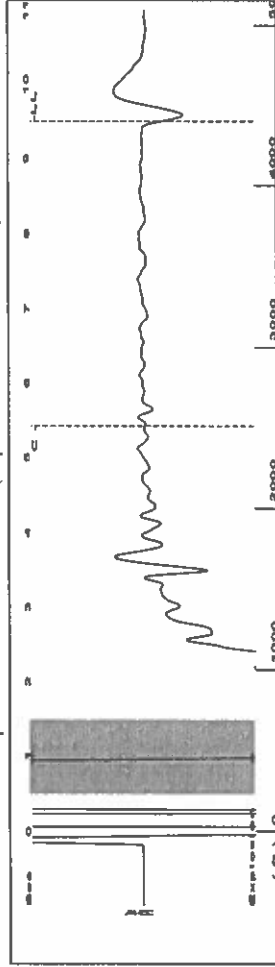
Submitted Electronically

Do NOT Write in This Space - KCC USE ONLY
Date Tested: Results: Date Plugged: Date Repaired: Date Put Back in Service:
Review Completed by: Comments:
TA Approved: Yes Denied Date:

Mail to the Appropriate KCC Conservation Office:

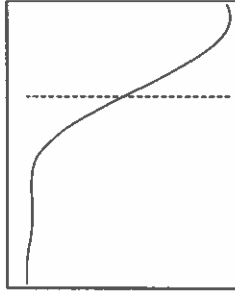
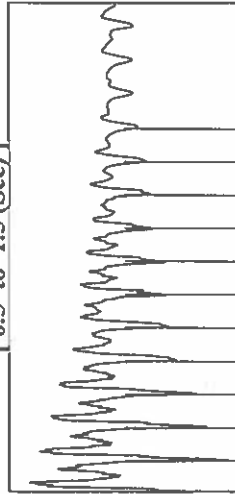
Table with 3 columns: District Office, Address, Phone. Rows 1-4.

Group: TAD Well: Miles 1-1128 (acquired on: 07/14/22 10:58:02)



Filter Type High Pass Automatic Collar Count Yes Time 9.5 sec  
 Manual Acoustic Velocity 32.353 ft/s Manual JTS/sec 14,7059 Joints 138,727  
 Depth 4397.63 ft

1.05 to 1.5 (Sec)

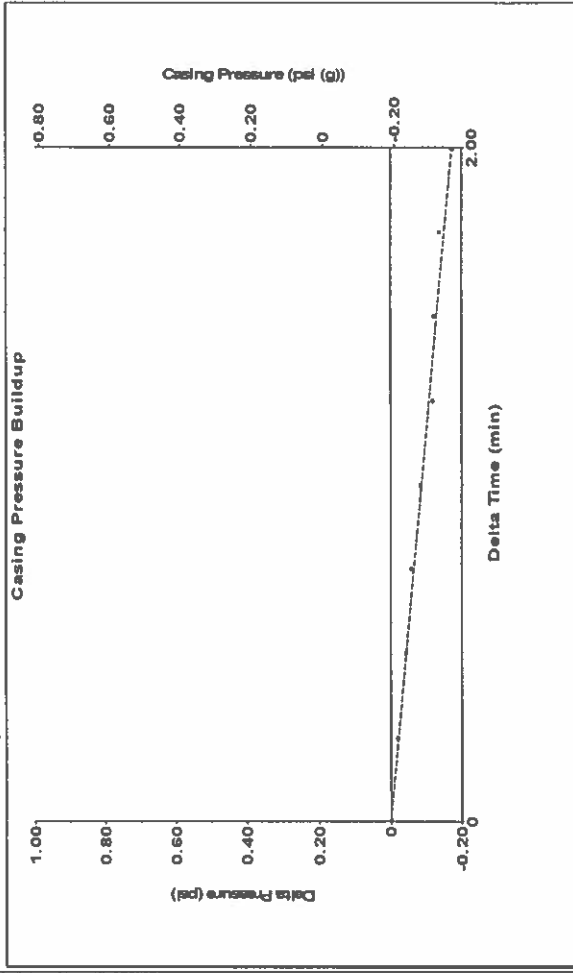


Analysis Method: Automatic

Group: TAD Well: Miles 1-1128 (acquired on: 07/14/22 10:58:02)

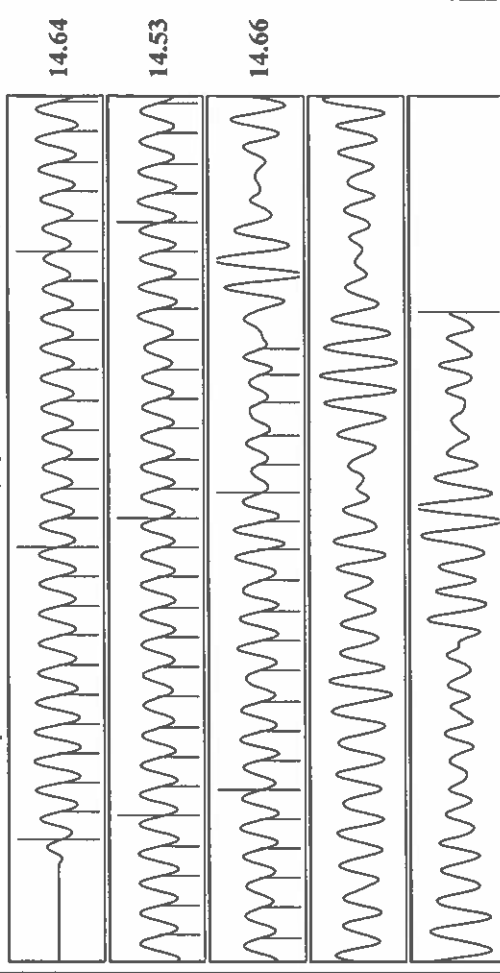
Production Current	Potential	Casing Pressure	Producing
Oil -*- BBL/D	-0.2 psi (g)	-0.173 psi	Annular
Water -*- BBL/D	2.00 min	2.2 psi (g)	Gas Flow 0 Mscf/D
Gas -*- Mscf/D	Vogel -*-	Gas/Liquid Interface Pressure	% Liquid 100 %
IPR Method	Production Efficiency 0.0	Liquid Level Depth	Pump Intake 205.6 psi (g)
PBHP/SBHP	Oil 40 deg-API	4397.63 ft	Producing BHP 197.2 psi (g)
Production Efficiency	Water 1.05 Sp.Gr:H2O	Pump Intake Depth	Static BHP -*- psi (g)
Oil 40 deg-API	Gas 1.05 Sp.Gr:AIR	4993.00 ft	
Water 1.05 Sp.Gr:H2O	Acoustic Velocity 925.818 ft/s	Formation Depth	
Gas 1.05 Sp.Gr:AIR	Formation Submergence	4968.00 ft	
Acoustic Velocity 925.818 ft/s	Total Gaseous Liquid Column HT (TVD)		
	Equivalent Gas Free Liquid HT (TVD)		
	Acoustic Test		

Group: TAD Well: Miles 1-1128 (acquired on: 07/14/22 10:58:02)



Change in Pressure -0.17 psi PT13865 Range 0 - ? psi  
 Change in Time 2.00 min

Group: TAD Well: Miles 1-1128 (acquired on: 07/14/22 10:58:02)



Acoustic Velocity 925.818 ft/s Joints counted 75  
 Joints Per Second 14.6028 Joints to liquid level 138.727  
 Depth to liquid level 4397.63 ft Filter Width 16.7059  
 Automatic Collar Count Yes Time to 1st Collar 5.416

Conservation Division  
District Office No. 1  
210 E. Frontview, Suite A  
Dodge City, KS 67801



Phone: 620-682-7933  
<http://kcc.ks.gov/>

Dwight D. Keen, Chair  
Susan K. Duffy, Commissioner  
Andrew J. French, Commissioner

Laura Kelly, Governor

August 01, 2022

Katherine McClurkan  
Merit Energy Company, LLC  
13727 Noel Road, Suite 1200  
Dallas, TX 75240-7362

Re: Temporary Abandonment  
API 15-093-21756-00-00  
Miles 1-1128  
SW/4 Sec.28-23S-37W  
Kearny County, Kansas

Dear Katherine McClurkan:

"Your temporary abandonment (TA) application for the well listed above has been approved. In accordance with K.A.R. 82-3-111 the TA status of this well will expire 08/01/2023.

- \* If you return this well to service or plug it, please notify the District Office.
- \* If you sell this well you are required to file a Transfer of Operator form, T-1.
- \* If the well will remain temporarily abandoned, you must submit a new TA application, CP-111, before 08/01/2023.

You may contact me at the number above if you have questions.

Very truly yours,

Michael Maier"