

KANSAS CORPORATION COMMISSION
OIL & GAS CONSERVATION DIVISION

TEMPORARY ABANDONMENT WELL APPLICATION

OPERATOR: License#
Name:
Address 1:
Address 2:
City: State: Zip:
Contact Person:
Phone:
Contact Person Email:
Field Contact Person:
Field Contact Person Phone:

API No. 15-
Spot Description:
Sec. Twp. S. R.
GPS Location: Lat: Long:
Datum: NAD27 NAD83 WGS84
County: Elevation:
Lease Name: Well #:
Well Type: Oil Gas OG WSW Other:
SWD Permit #: ENHR Permit #:
Gas Storage Permit #:
Spud Date: Date Shut-In:

Table with 7 columns: Conductor, Surface, Production, Intermediate, Liner, Tubing. Rows include Size, Setting Depth, Amount of Cement, Top of Cement, Bottom of Cement.

Casing Fluid Level from Surface: How Determined? Date:
Casing Squeeze(s): to w / sacks of cement, to w / sacks of cement. Date:
Do you have a valid Oil & Gas Lease? Yes No
Depth and Type: Junk in Hole at Tools in Hole at Casing Leaks: Yes No Depth of casing leak(s):
Type Completion: ALT. I ALT. II Depth of: DV Tool: w / sacks of cement Port Collar: w / sack of cement
Packer Type: Size: Inch Set at: Feet
Total Depth: Plug Back Depth: Plug Back Method:

Geological Data:

Table with 4 columns: Formation Name, Formation Top, Formation Base, Completion Information. Rows 1 and 2.

UNDER PENALTY OF PERJURY I HEREBY ATTEST THAT THE INFORMATION CONTAINED HEREIN IS TRUE AND CORRECT TO THE BEST OF MY KNOWLEDGE

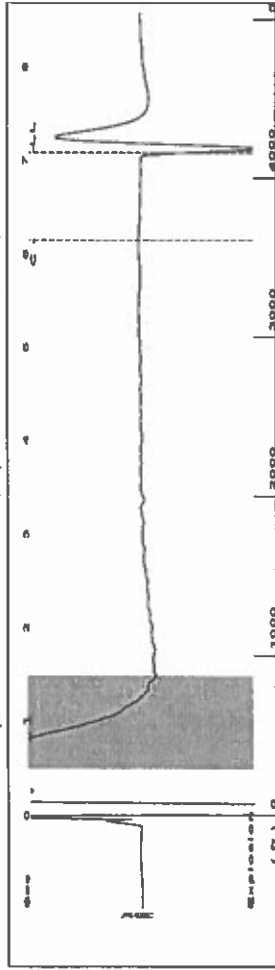
Submitted Electronically

Do NOT Write in This Space - KCC USE ONLY
Date Tested: Results: Date Plugged: Date Repaired: Date Put Back in Service:
Review Completed by: Comments:
TA Approved: Yes Denied Date:

Mail to the Appropriate KCC Conservation Office:

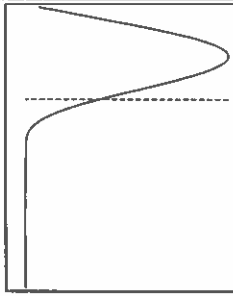
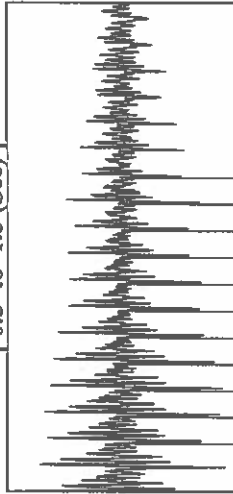
Table with 3 columns: District Office, Address, Phone. Rows for District Office #1, #2, #3, #4.

Group: TAD Well: atkins m-2 (acquired on: 07/28/22 13:30:44)



Filter Type High Pass Automatic Collar Count Yes Time 7.08 sec
 Manual Acoustic Velocity 1163.3 ft/s Manual JTS/sec 18.3486 Joints 131.156 Jts
 Depth 4157.63 ft

10.5 to 1.5 (Sec)

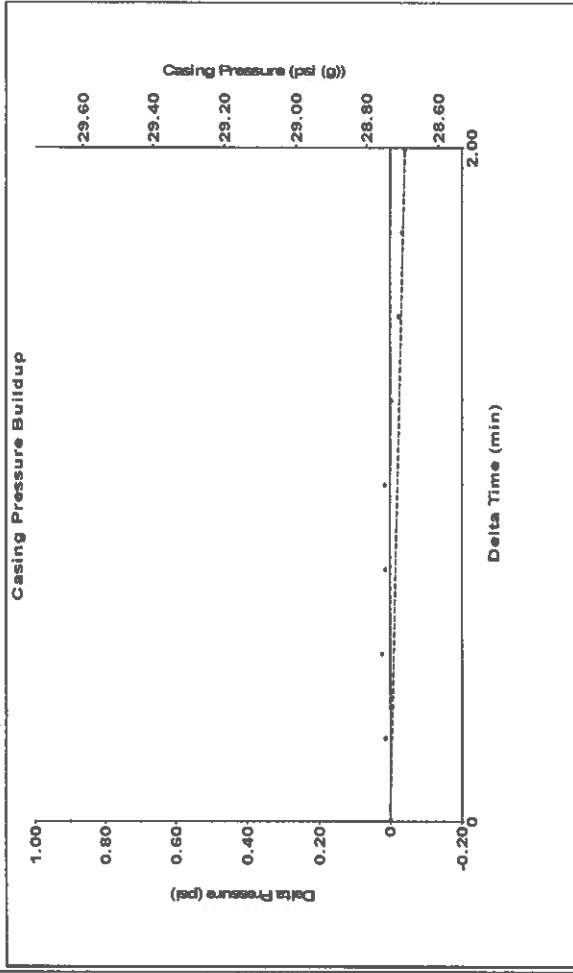


Analysis Method: Automatic

Group: TAD Well: atkins m-2 (acquired on: 07/28/22 13:30:44)

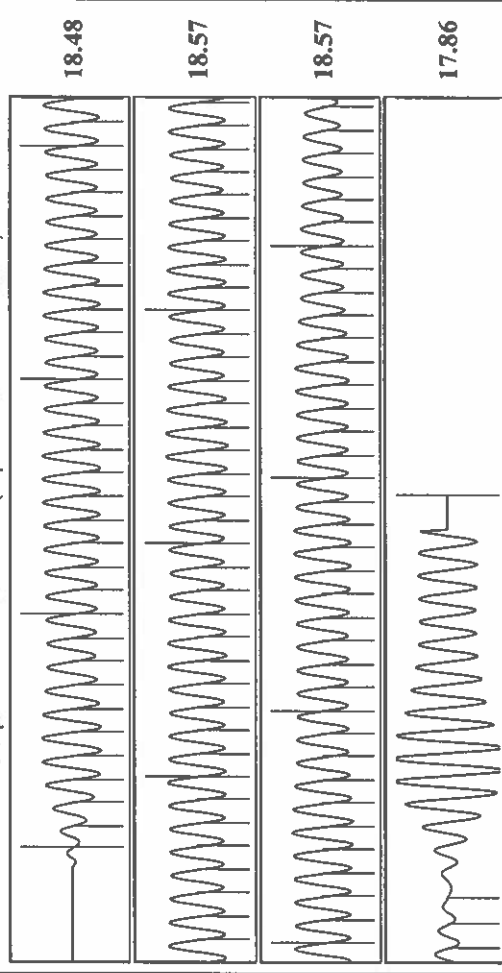
Production	Potential	Casing Pressure	28.7 psi (g)
Oil	-*- BBL/D	Casing Pressure Buildup	-0.041 psi
Water	-*- BBL/D	Gas/Liquid Interface Pressure	34.0 psi (g)
Gas	-*- Mscf/D	Liquid Level Depth	4157.63 ft
IPR Method	Vogel	Pump Intake Depth	5191.00 ft
PBHP/SBHP	-*-	Formation Depth	5134.00 ft
Production Efficiency	0.0		
Oil	40 deg-API		
Water	1.05 Sp.Gr.H2O		
Gas	0.82 Sp.Gr.AIR		
Acoustic Velocity	1174.47 ft/s		
Formation Submergence			
Total Gaseous Liquid Column HT (TVD)	1033 ft		
Equivalent Gas Free Liquid HT (TVD)	1033 ft		
Acoustic Test			
Producing			
Annular Gas Flow	0 Mscf/D		
% Liquid	100 %		
Pump Intake	381.6 psi (g)		
Producing BHP	362.8 psi (g)		
Static BHP	-*- psi (g)		

Group: TAD Well: atkins m-2 (acquired on: 07/28/22 13:30:44)



Change in Pressure -0.04 psi PT13865 Range
 Change in Time 2.00 min

Group: TAD Well: atkins m-2 (acquired on: 07/28/22 13:30:44)



Acoustic Velocity 1174.47 ft/s Joints counted 109
 Joints Per Second 18.5248 Jts/sec Joints to liquid level 131.156
 Depth to liquid level 4157.63 ft Filter Width 20.3486
 Automatic Collar Count Yes Time to 1st Collar 6.148

August 01, 2022

Katherine McClurkan
Merit Energy Company, LLC
13727 Noel Road, Suite 1200
Dallas, TX 75240

Re: Temporary Abandonment
API 15-081-21366-00-00
Atkins M 2
NW/4 Sec.17-27S-33W
Haskell County, Kansas

Dear Katherine McClurkan:

"Your temporary abandonment (TA) application for the well listed above has been approved. In accordance with K.A.R. 82-3-111 the TA status of this well will expire 08/01/2023.

- * If you return this well to service or plug it, please notify the District Office.
- * If you sell this well you are required to file a Transfer of Operator form, T-1.
- * If the well will remain temporarily abandoned, you must submit a new TA application, CP-111, before 08/01/2023.

You may contact me at the number above if you have questions.

Very truly yours,

Michael Maier"