

KANSAS CORPORATION COMMISSION
OIL & GAS CONSERVATION DIVISION

TEMPORARY ABANDONMENT WELL APPLICATION

OPERATOR: License#
Name:
Address 1:
Address 2:
City: State: Zip:
Contact Person:
Phone:
Contact Person Email:
Field Contact Person:
Field Contact Person Phone:

API No. 15-
Spot Description:
Sec. Twp. S. R.
GPS Location: Lat: Long:
Datum: NAD27 NAD83 WGS84
County: Elevation:
Lease Name: Well #:
Well Type: Oil Gas OG WSW Other:
SWD Permit #: ENHR Permit #:
Gas Storage Permit #:
Spud Date: Date Shut-In:

Table with 7 columns: Conductor, Surface, Production, Intermediate, Liner, Tubing. Rows include Size, Setting Depth, Amount of Cement, Top of Cement, Bottom of Cement.

Casing Fluid Level from Surface: How Determined? Date:
Casing Squeeze(s): to w / sacks of cement, to w / sacks of cement. Date:
Do you have a valid Oil & Gas Lease? Yes No
Depth and Type: Junk in Hole at Tools in Hole at Casing Leaks: Yes No Depth of casing leak(s):
Type Completion: ALT. I ALT. II Depth of: DV Tool: w / sacks of cement Port Collar: w / sack of cement
Packer Type: Size: Inch Set at: Feet
Total Depth: Plug Back Depth: Plug Back Method:

Geological Data:

Table with 4 columns: Formation Name, Formation Top, Formation Base, Completion Information. Rows 1 and 2.

UNDER PENALTY OF PERJURY I HEREBY ATTEST THAT THE INFORMATION CONTAINED HEREIN IS TRUE AND CORRECT TO THE BEST OF MY KNOWLEDGE

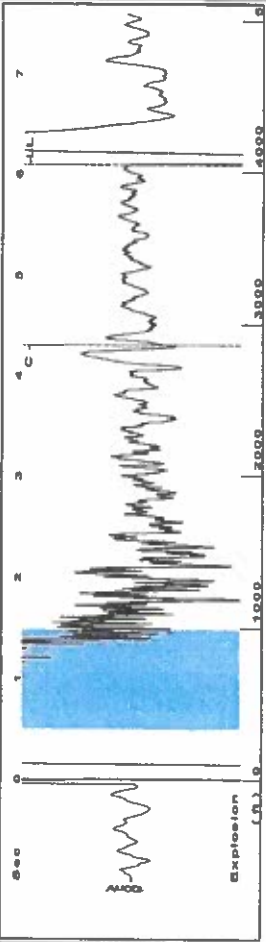
Submitted Electronically

Do NOT Write in This Space - KCC USE ONLY
Date Tested: Results: Date Plugged: Date Repaired: Date Put Back in Service:
Review Completed by: Comments:
TA Approved: Yes Denied Date:

Mail to the Appropriate KCC Conservation Office:

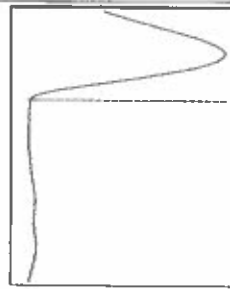
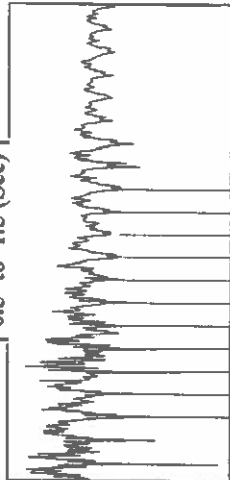
Table with 3 columns: District Office #, Address, Phone. Rows 1-4.

Group: CMX Well: #1 Simms (acquired on: 07/27/22 14:28:09)



Filter Type High Pass Automatic Collar Count Yes Time 6.099 sec  
 Manual Acoustic Velo 1323.59 ft/s Manual JTS/sec 20.8768 Joints 127.688 Jts  
 Depth 4047.72 ft

0.5 to 1.5 (Sec)



**Analysis Method: Automatic**

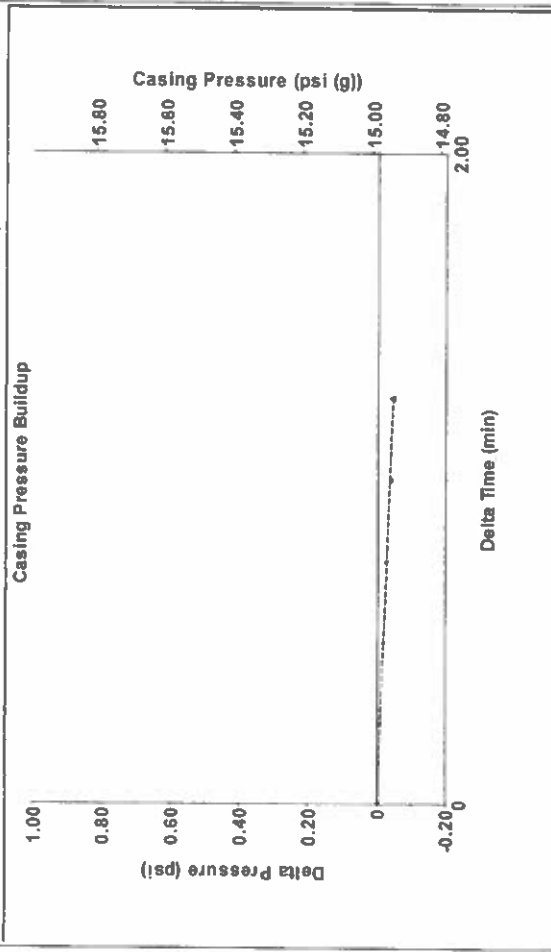
Group: CMX Well: #1 Simms (acquired on: 07/27/22 14:28:09)

Production	Potential	Casing Pressure	15.0 psi (g)
Current	Oil	Casing Pressure Buildup	-0.044 psi
Oil	Water	Gas/Liquid Interface Pressure	17.8 psi (g)
Water	Gas	Vogel	0.0
Gas	Production Efficiency	Oil 40 deg API	
IPR Method		Water 1.05 Sp.Gr.H2O	
PBHP/SBHP		Gas 0.68 Sp.Gr.AIR	
Production Efficiency		Acoustic Velocity	1327.34 ft/s
		Liquid Level Depth	4047.72 ft
		Pump Intake Depth	4780.00 ft
		Formation Depth	4780.00 ft



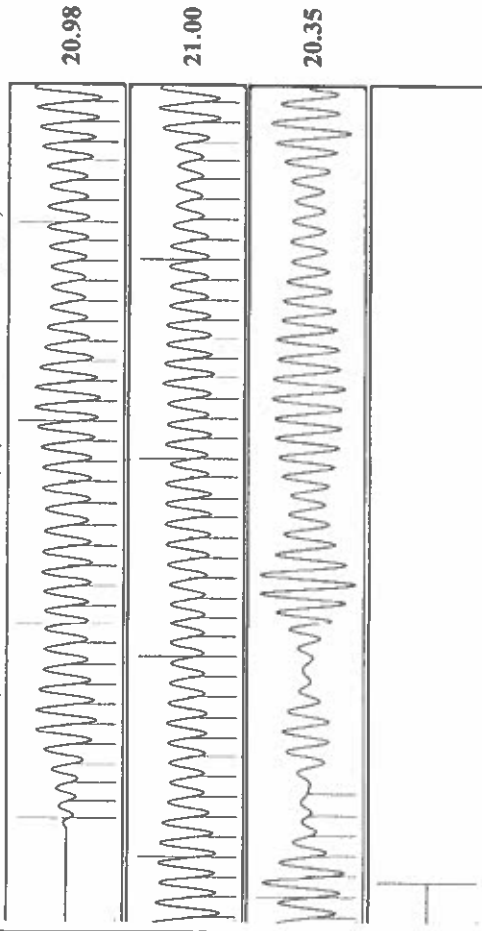
Acoustic Test

Group: CMX Well: #1 Simms (acquired on: 07/27/22 14:28:09)



Change in Pressure -0.04 psi PT8496 Range  
 Change in Time 1.25 min

Group: CMX Well: #1 Simms (acquired on: 07/27/22 14:28:09)



Acoustic Velocity 1327.34 ft/s Joints counted 85  
 Joints Per Second 20.936 jts/sec Joints to liquid level 127.688  
 Depth to liquid level 4047.72 ft Filter Width 22.8768  
 Automatic Collar Count Yes Time to 1st Collar 0.248 4.308

August 02, 2022

Douglas McGinness II  
CMX, Inc.  
9330 E CENTRAL SUITE 300  
WICHITA, KS 67206-6610

Re: Temporary Abandonment  
API 15-007-30132-00-00  
M.K SIMS 1  
SW/4 Sec.01-34S-14W  
Barber County, Kansas

Dear Douglas McGinness II:

"Your temporary abandonment (TA) application for the well listed above has been approved. In accordance with K.A.R. 82-3-111 the TA status of this well will expire 08/02/2023.

- \* If you return this well to service or plug it, please notify the District Office.
- \* If you sell this well you are required to file a Transfer of Operator form, T-1.
- \* If the well will remain temporarily abandoned, you must submit a new TA application, CP-111, before 08/02/2023.

You may contact me at the number above if you have questions.

Very truly yours,

Michael Maier"