

KANSAS CORPORATION COMMISSION
OIL & GAS CONSERVATION DIVISION

TEMPORARY ABANDONMENT WELL APPLICATION

OPERATOR: License#
Name:
Address 1:
Address 2:
City: State: Zip:
Contact Person:
Phone:
Contact Person Email:
Field Contact Person:
Field Contact Person Phone:

API No. 15-
Spot Description:
Sec. Twp. S. R.
GPS Location: Lat: Long:
Datum:
County: Elevation:
Lease Name: Well #:
Well Type:
SWD Permit #: ENHR Permit #:
Gas Storage Permit #:
Spud Date: Date Shut-In:

Table with 7 columns: Conductor, Surface, Production, Intermediate, Liner, Tubing. Rows include Size, Setting Depth, Amount of Cement, Top of Cement, Bottom of Cement.

Casing Fluid Level from Surface: How Determined? Date:
Casing Squeeze(s): to w / sacks of cement, to w / sacks of cement. Date:
Do you have a valid Oil & Gas Lease? Yes No
Depth and Type: Junk in Hole at Tools in Hole at Casing Leaks: Yes No Depth of casing leak(s):
Type Completion: ALT. I ALT. II Depth of: DV Tool: w / sacks of cement Port Collar: w / sack of cement
Packer Type: Size: Inch Set at: Feet
Total Depth: Plug Back Depth: Plug Back Method:

Geological Data:

Table with 4 columns: Formation Name, Formation Top, Formation Base, Completion Information. Rows 1 and 2.

UNDER PENALTY OF PERJURY I HEREBY ATTEST THAT THE INFORMATION CONTAINED HEREIN IS TRUE AND CORRECT TO THE BEST OF MY KNOWLEDGE

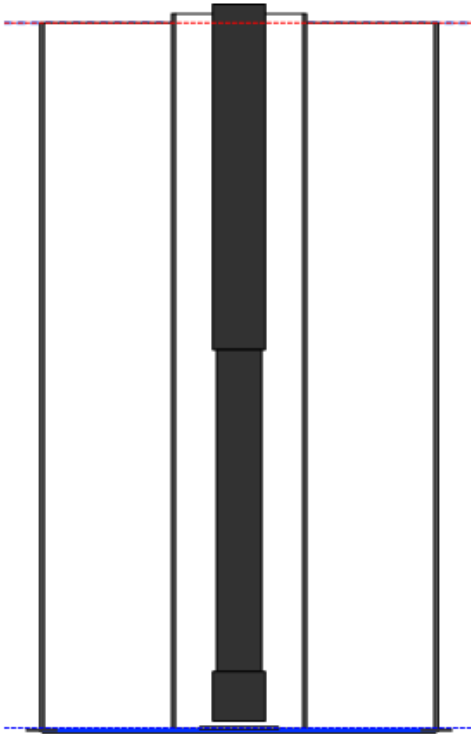
Submitted Electronically

Do NOT Write in This Space - KCC USE ONLY
Date Tested: Results: Date Plugged: Date Repaired: Date Put Back in Service:
Review Completed by: Comments:
TA Approved: Yes Denied Date:

Mail to the Appropriate KCC Conservation Office:

Table with 2 columns: Office Address, Phone. Rows for District Office #1, #2, #3, #4.

**Producing Shot
Manual Input**



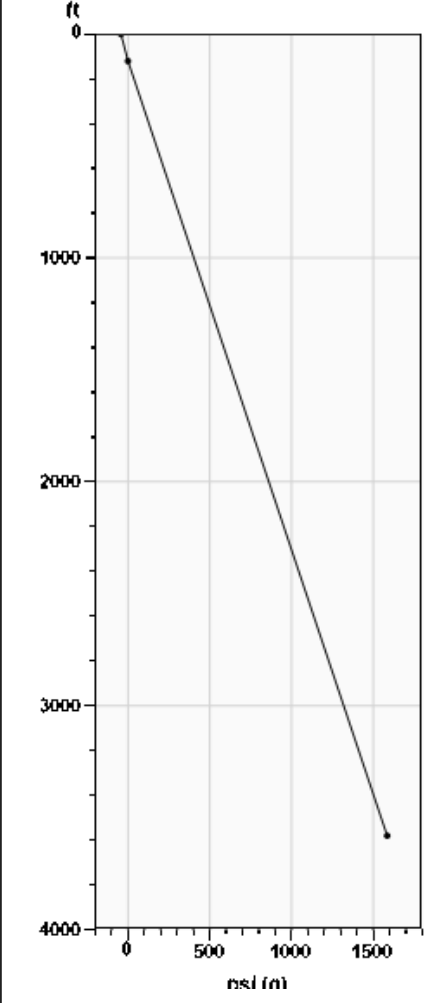
Manually Entered Production

Liquid Level 3560 ft
Percent Liquid 100.00%

**Static Bottomhole Pressure
1584.9 psi (g) @ 3581 ft TVD**

Static Liquid Level 121 ft MD
Oil Column Height -121 ft MD
Water Column Height 3581 ft MD

Pressure Profile (TVD)

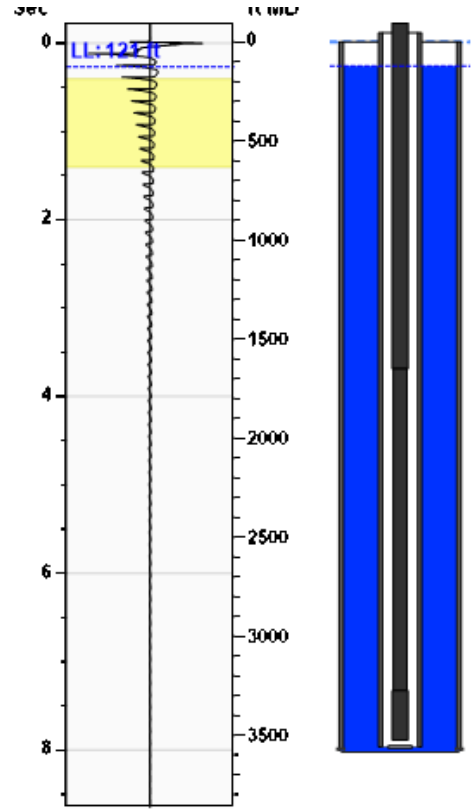


Well Test

Oil 0 BBL/D
Water 0 BBL/D

**Comments and
Recommendations**

**Static Shot
07/15/2022 02:05:56PM**



Casing Pressure Buildup

No Pressure Acquired

Casing Pressure *.* psi (g)
Buildup *.* psi (g)
Buildup Time *.* sec
Gas Gravity 0.7000 Air = 1

Casing Pressure

Pressure *.* psi (g)

Annular Gas Flow

Gas Flow 0.0 Mscf/D

Conservation Division
District Office No. 4
2301 E. 13th Street
Hays, KS 67601-2651



Phone: 785-261-6250
Fax: 785-625-0564
<http://kcc.ks.gov/>

Dwight D. Keen, Chair
Susan K. Duffy, Commissioner
Andrew J. French, Commissioner

Laura Kelly, Governor

August 10, 2022

Kristina M. Clevenger
Trans Pacific Oil Corporation
100 S MAIN ST STE 200
WICHITA, KS 67202-3735

Re: Temporary Abandonment
API 15-051-25775-00-00
LEIKER 8-18
NW/4 Sec.18-15S-17W
Ellis County, Kansas

Dear Kristina M. Clevenger:

Your application for Temporary Abandonment (TA) for the above-listed well is denied for the following reasons(s):

High Fluid Level

Pursuant to K.A.R. 82-3-111, the well must be plugged, or returned to service, or obtain temporary abandonment status by 09/09/2022.

This deadline does NOT override any compliance deadline given to you in any Commission Order.

You may contact me if you have any questions.

Sincerely,
RICHARD WILLIAMS
KCC DISTRICT 4