

KANSAS CORPORATION COMMISSION  
OIL & GAS CONSERVATION DIVISION

TEMPORARY ABANDONMENT WELL APPLICATION

OPERATOR: License# \_\_\_\_\_  
 Name: \_\_\_\_\_  
 Address 1: \_\_\_\_\_  
 Address 2: \_\_\_\_\_  
 City: \_\_\_\_\_ State: \_\_\_\_\_ Zip: \_\_\_\_\_ + \_\_\_\_\_  
 Contact Person: \_\_\_\_\_  
 Phone: ( \_\_\_\_\_ ) \_\_\_\_\_  
 Contact Person Email: \_\_\_\_\_  
 Field Contact Person: \_\_\_\_\_  
 Field Contact Person Phone: ( \_\_\_\_\_ ) \_\_\_\_\_

API No. 15- \_\_\_\_\_  
 Spot Description: \_\_\_\_\_  
 \_\_\_\_\_ - \_\_\_\_\_ - \_\_\_\_\_ - \_\_\_\_\_ Sec. \_\_\_\_\_ Twp. \_\_\_\_\_ S. R. \_\_\_\_\_  E  W  
 \_\_\_\_\_ feet from  N /  S Line of Section  
 \_\_\_\_\_ feet from  E /  W Line of Section  
 GPS Location: Lat: \_\_\_\_\_, Long: \_\_\_\_\_  
(e.g. xx.xxxxx) (e.g. -xxx.xxxxx)  
 Datum:  NAD27  NAD83  WGS84  
 County: \_\_\_\_\_ Elevation: \_\_\_\_\_  GL  KB  
 Lease Name: \_\_\_\_\_ Well #: \_\_\_\_\_  
 Well Type: (check one)  Oil  Gas  OG  WSW  Other: \_\_\_\_\_  
 SWD Permit #: \_\_\_\_\_  ENHR Permit #: \_\_\_\_\_  
 Gas Storage Permit #: \_\_\_\_\_  
 Spud Date: \_\_\_\_\_ Date Shut-In: \_\_\_\_\_

|                  | Conductor | Surface | Production | Intermediate | Liner | Tubing |
|------------------|-----------|---------|------------|--------------|-------|--------|
| Size             |           |         |            |              |       |        |
| Setting Depth    |           |         |            |              |       |        |
| Amount of Cement |           |         |            |              |       |        |
| Top of Cement    |           |         |            |              |       |        |
| Bottom of Cement |           |         |            |              |       |        |

Casing Fluid Level from Surface: \_\_\_\_\_ How Determined? \_\_\_\_\_ Date: \_\_\_\_\_  
 Casing Squeeze(s): \_\_\_\_\_ to \_\_\_\_\_ w / \_\_\_\_\_ sacks of cement, \_\_\_\_\_ to \_\_\_\_\_ w / \_\_\_\_\_ sacks of cement. Date: \_\_\_\_\_  
(top) (bottom) (top) (bottom)  
 Do you have a valid Oil & Gas Lease?  Yes  No  
 Depth and Type:  Junk in Hole at \_\_\_\_\_  Tools in Hole at \_\_\_\_\_ Casing Leaks:  Yes  No Depth of casing leak(s): \_\_\_\_\_  
(depth) (depth)  
 Type Completion:  ALT. I  ALT. II Depth of:  DV Tool: \_\_\_\_\_ w / \_\_\_\_\_ sacks of cement  Port Collar: \_\_\_\_\_ w / \_\_\_\_\_ sack of cement  
(depth) (depth)  
 Packer Type: \_\_\_\_\_ Size: \_\_\_\_\_ Inch Set at: \_\_\_\_\_ Feet  
 Total Depth: \_\_\_\_\_ Plug Back Depth: \_\_\_\_\_ Plug Back Method: \_\_\_\_\_

**Geological Data:**

| Formation Name | Formation Top | Formation Base | Completion Information   |
|----------------|---------------|----------------|--|
| 1. _____       | At: _____     | to _____ Feet  | Perforation Interval _____ to _____ Feet or Open Hole Interval _____ to _____ Feet |
| 2. _____       | At: _____     | to _____ Feet  | Perforation Interval _____ to _____ Feet or Open Hole Interval _____ to _____ Feet |

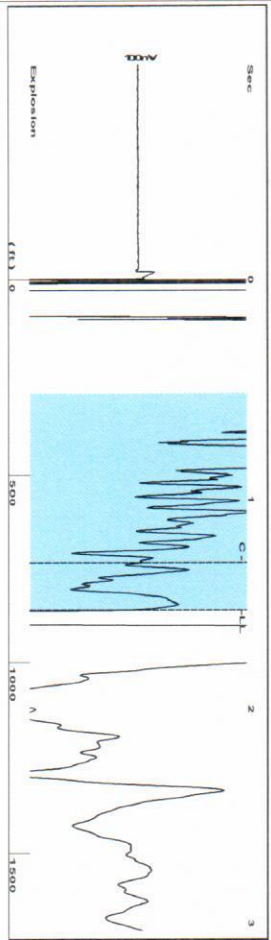
UNDER PENALTY OF PERJURY I HEREBY ATTEST THAT THE INFORMATION CONTAINED HEREIN IS TRUE AND CORRECT TO THE BEST OF MY KNOWLEDGE

Submitted Electronically

|   |  |                |                     |                      |                                 |
|---|--|----------------|---------------------|----------------------|---------------------------------|
| <b>Do NOT Write in This Space - KCC USE ONLY</b>                                      | Date Tested: _____                         | Results: _____ | Date Plugged: _____ | Date Repaired: _____ | Date Put Back in Service: _____ |
|   | Review Completed by: _____ Comments: _____ |                |                     |                      |                                 |
| TA Approved: <input type="checkbox"/> Yes <input type="checkbox"/> Denied Date: _____ |  |                |                     |                      |                                 |

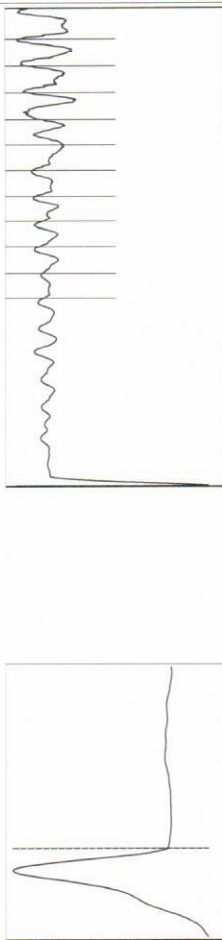
Mail to the Appropriate KCC Conservation Office:

|  |  |                    |
|--|--|--------------------|
|  | KCC District Office #1 - 210 E. Frontview, Suite A, Dodge City, KS 67801               | Phone 620.682.7933 |
|  | KCC District Office #2 - 3450 N. Rock Road, Building 600, Suite 601, Wichita, KS 67226 | Phone 316.337.7400 |
|  | KCC District Office #3 - 137 E. 21st St., Chanute, KS 66720                            | Phone 620.902.6450 |
|  | KCC District Office #4 - 2301 E. 13th Street, Hays, KS 67601-2651                      | Phone 785.261.6250 |



Filter Type High Pass Automatic Collar Count Yes  
 Manual Acoustic Velocity 154.83 f/s Manual JTS/sec 18.2149  
 Time 1.532 sec  
 Joints 27.1417 Jts  
 Depth 860.39 ft

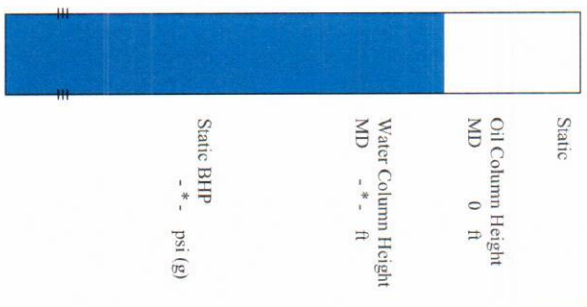
0.5 to 1.5 (Sec) |



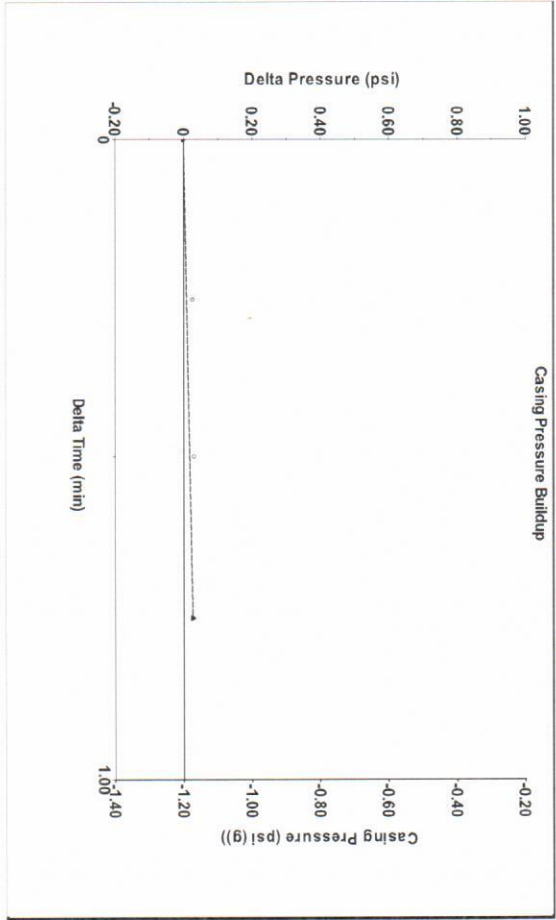
Analysis Method: Automatic

Group: Smith Oil Operations Well: Swarner 1 (acquired on: 08/04/22 10:50:01 )

| Production            | Potential    | Casing Pressure               | Static              |
|-----------------------|--------------|-------------------------------|---------------------|
| Oil -*- BBL/D         | -*- BBL/D    | -1.2 psi (g)                  | Oil Column Height   |
| Water -*- BBL/D       | -*- BBL/D    | Casing Pressure Buildup       | MD 0 ft             |
| Gas -*- Mscf/D        | -*- Mscf/D   | 0.0 psi                       | Water Column Height |
|                       |              | 0.75 min                      | MD -*- ft           |
| IPR Method            | Vogel        | Gas/Liquid Interface Pressure |                     |
| PBHP/SBHP             | -*-          | -*- psi (g)                   |                     |
| Production Efficiency | 0.0          |                               |                     |
| Oil 40 deg API        |              | Liquid Level Depth            |                     |
| Water 1.05 Sp.Gr:H2O  |              | 860.39 ft                     |                     |
| Gas 0.85 Sp.Gr:AIR    |              | Pump Intake Depth             |                     |
|                       |              | -*- ft                        |                     |
| Acoustic Velocity     | 1123.23 ft/s | Formation Depth               |                     |
|                       |              | 5026.00 ft                    |                     |

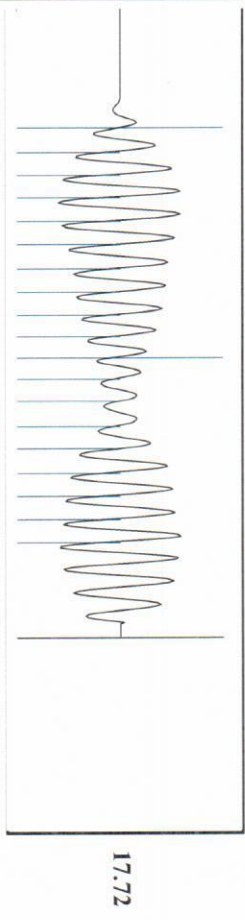


Acoustic Test



Change in Pressure 0.03 psi PTT 8948  
 Change in Time 0.75 min Range 0 - ? psi

Group: Smith Oil Operations Well: Swarner 1 (acquired on: 08/04/22 10:50:01 )



Acoustic Velocity 1123.23 ft/s Joints counted 18  
 Joints Per Second 17.7165 Jts/sec Joints to liquid level 27.1417  
 Depth to liquid level 860.393 ft Filter Width 16.2149  
 Automatic Collar Count Yes Time to 1st Collar 0.288 1.304

Conservation Division  
District Office No. 1  
210 E. Frontview, Suite A  
Dodge City, KS 67801



Phone: 620-682-7933  
<http://kcc.ks.gov/>

Dwight D. Keen, Chair  
Susan K. Duffy, Commissioner  
Andrew J. French, Commissioner

Laura Kelly, Governor

August 10, 2022

DALE R. OHL  
Smith, Richard E. dba Smith Oil Operations  
410 N. ADAMS  
PO BOX 550  
HUTCHINSON, KS 67504-0550

Re: Temporary Abandonment  
API 15-033-01007-00-01  
SWARNER OWWO 1  
NW/4 Sec.17-31S-18W  
Comanche County, Kansas

Dear DALE R. OHL:

"Your temporary abandonment (TA) application for the well listed above has been approved. In accordance with K.A.R. 82-3-111 the TA status of this well will expire 08/10/2023.

- \* If you return this well to service or plug it, please notify the District Office.
- \* If you sell this well you are required to file a Transfer of Operator form, T-1.
- \* If the well will remain temporarily abandoned, you must submit a new TA application, CP-111, before 08/10/2023.

You may contact me at the number above if you have questions.

Very truly yours,

Michael Maier"