

KANSAS CORPORATION COMMISSION
OIL & GAS CONSERVATION DIVISION

TEMPORARY ABANDONMENT WELL APPLICATION

OPERATOR: License#
Name:
Address 1:
Address 2:
City: State: Zip:
Contact Person:
Phone:
Contact Person Email:
Field Contact Person:
Field Contact Person Phone:

API No. 15-
Spot Description:
Sec. Twp. S. R.
GPS Location: Lat, Long
Datum: NAD27, NAD83, WGS84
County: Elevation:
Lease Name: Well #:
Well Type: Oil, Gas, OG, WSW, Other
SWD Permit #: ENHR Permit #:
Gas Storage Permit #:
Spud Date: Date Shut-In:

Table with 7 columns: Conductor, Surface, Production, Intermediate, Liner, Tubing. Rows include Size, Setting Depth, Amount of Cement, Top of Cement, Bottom of Cement.

Casing Fluid Level from Surface: How Determined? Date:
Casing Squeeze(s): to w / sacks of cement, to w / sacks of cement. Date:
Do you have a valid Oil & Gas Lease? Yes No
Depth and Type: Junk in Hole at Tools in Hole at Casing Leaks: Yes No Depth of casing leak(s):
Type Completion: ALT. I ALT. II Depth of: DV Tool: w / sacks of cement Port Collar: w / sack of cement
Packer Type: Size: Inch Set at: Feet
Total Depth: Plug Back Depth: Plug Back Method:

Geological Date:

Table with 4 columns: Formation Name, Formation Top, Formation Base, Completion Information. Rows 1 and 2.

UNDER PENALTY OF PERJURY I HEREBY ATTEST THAT THE INFORMATION CONTAINED HEREIN IS TRUE AND CORRECT TO THE BEST OF MY KNOWLEDGE

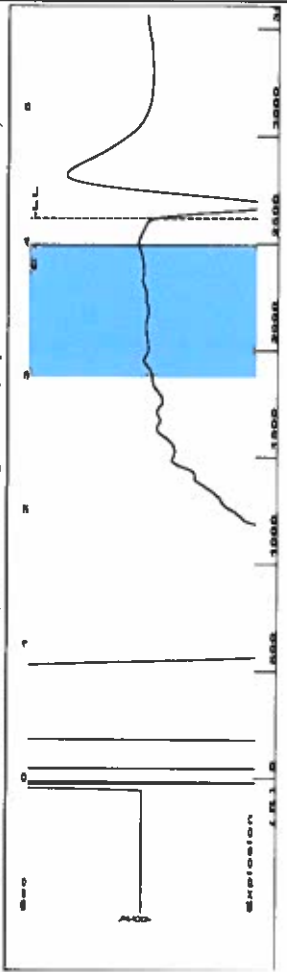
Submitted Electronically

Form with fields: Do NOT Write in This Space - KCC USE ONLY, Date Tested, Results, Date Plugged, Date Repaired, Date Put Back in Service, Review Completed by, Comments, TA Approved: Yes Denied, Date.

Mail to the Appropriate KCC Conservation Office:

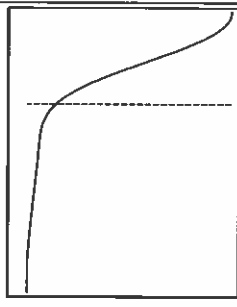
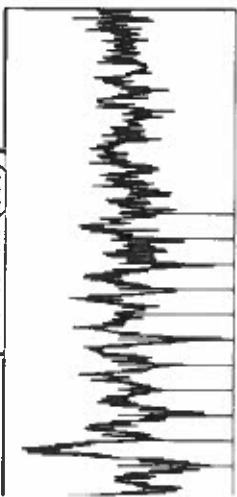
Table with 3 columns: District Office (1-4), Address, Phone number.

Group: Merit Energy Company-Ulysses Well: English G-2 (acquired on: 08/02/22 17:07:16)



Filter Type High Pass Automatic Collar Count Yes
 Manual Acoustic Velox 1226.31 ft/s Manual JTS/sec 19.3424
 Time 4.178 sec
 Joints 82.6094 Jts
 Depth 2618.72 ft

[3.0 to 4.0 (Sec)]



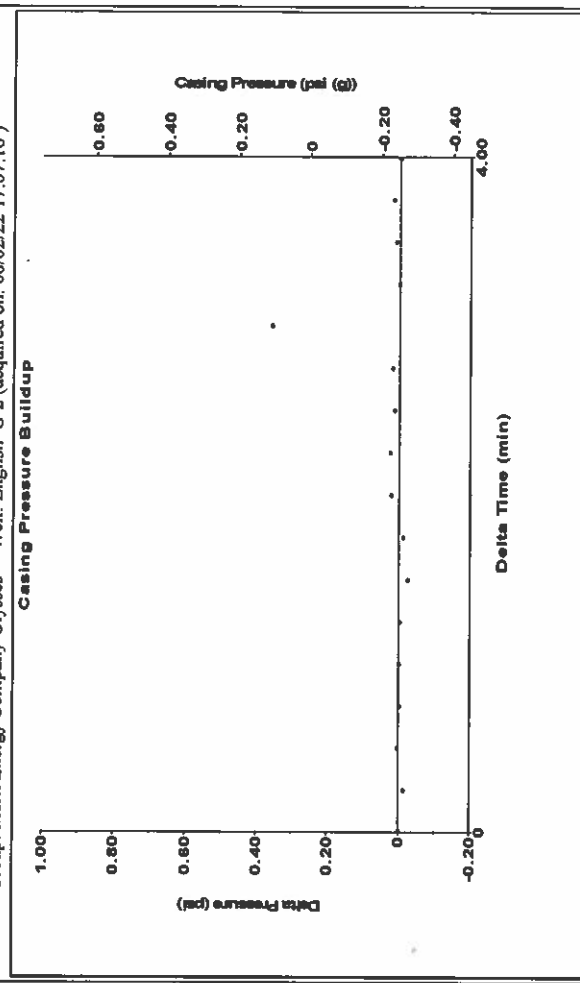
Analysis Method: Automatic

Group: Merit Energy Company-Ulysses Well: English G-2 (acquired on: 08/02/22 17:07:16)

Production	Potential	Casing Pressure	Producing
Oil - * -	- * - BBL/D	-0.2 psi (g)	Annular
Water - * -	- * - BBL/D	-0.0 psi	Gas Flow 0 Mscf/D
Gas - * -	- * - Mscf/D	4.00 min	% Liquid 100 %
IPR Method Vogel	Gas/Liquid Interface Pressure	0.7 psi (g)	Pump Intake 120.5 psi (g)
PBHP/SBHP - * -	Liquid Level Depth		Producing BHP 123.2 psi (g)
Production Efficiency 0.0	Pump Intake Depth		Static BHP - * - psi (g)
Oil 40 deg.API	Formation Depth		
Water 1.05 Sp.Gr.H2O			
Gas 0.75 Sp.Gr.AIR			
Acoustic Velocity 1253.58 ft/s			
Formation Submergence			
Total Gaseous Liquid Column HT (TVD) 353 ft			
Equivalent Gas Free Liquid HT (TVD) 353 ft			

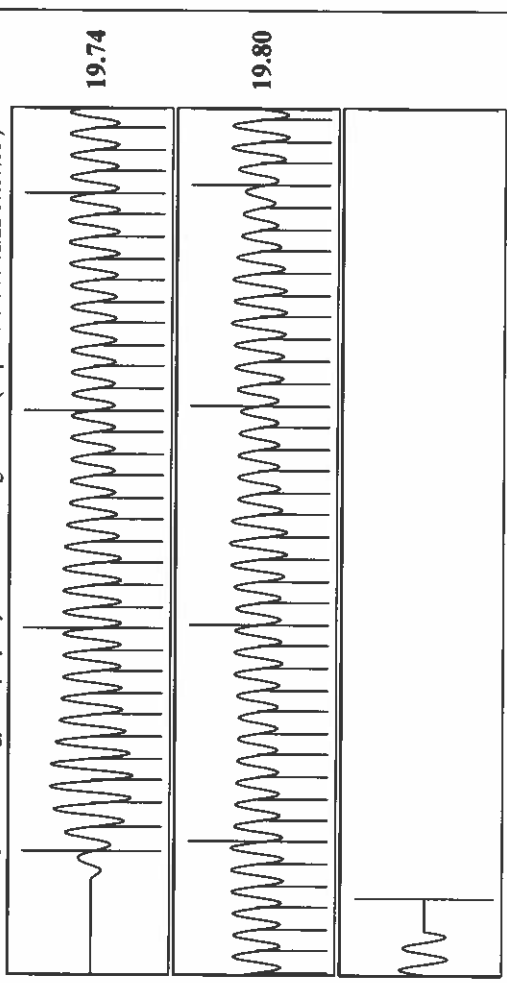
8/2/22

Group: Merit Energy Company-Ulysses Well: English G-2 (acquired on: 08/02/22 17:07:16)



Change in Pressure -0.00 psi
 Change in Time 4.00 min
 PT18865 Range

Group: Merit Energy Company-Ulysses Well: English G-2 (acquired on: 08/02/22 17:07:16)



Acoustic Velocity 1253.58 ft/s Joints counted 73
 Joints Per Second 19.7725 jts/sec Joints to liquid level 82.6094
 Depth to liquid level 2618.72 ft Filter Width 17.3424
 Automatic Collar Count Yes Time to 1st Collar 0.284
 21.3424
 3.976

Conservation Division
District Office No. 1
210 E. Frontview, Suite A
Dodge City, KS 67801



Phone: 620-682-7933
<http://kcc.ks.gov/>

Dwight D. Keen, Chair
Susan K. Duffy, Commissioner
Andrew J. French, Commissioner

Laura Kelly, Governor

August 10, 2022

Katherine McClurkan
Merit Energy Company, LLC
13727 Noel Road, Suite 1200
Dallas, TX 75240-7362

Re: Temporary Abandonment
API 15-067-20415-00-00
English G 2
NE/4 Sec.04-28S-35W
Grant County, Kansas

Dear Katherine McClurkan:

"Your temporary abandonment (TA) application for the well listed above has been approved. In accordance with K.A.R. 82-3-111 the TA status of this well will expire 08/10/2023.

- * If you return this well to service or plug it, please notify the District Office.
- * If you sell this well you are required to file a Transfer of Operator form, T-1.
- * If the well will remain temporarily abandoned, you must submit a new TA application, CP-111, before 08/10/2023.

You may contact me at the number above if you have questions.

Very truly yours,

Michael Maier"