

KANSAS CORPORATION COMMISSION
OIL & GAS CONSERVATION DIVISION

TEMPORARY ABANDONMENT WELL APPLICATION

OPERATOR: License#
Name:
Address 1:
Address 2:
City: State: Zip:
Contact Person:
Phone:
Contact Person Email:
Field Contact Person:
Field Contact Person Phone:

API No. 15-
Spot Description:
Sec. Twp. S. R.
GPS Location: Lat: Long:
Datum: NAD27 NAD83 WGS84
County: Elevation:
Lease Name: Well #:
Well Type: Oil Gas OG WSW Other:
SWD Permit #: ENHR Permit #:
Gas Storage Permit #:
Spud Date: Date Shut-In:

Table with 7 columns: Conductor, Surface, Production, Intermediate, Liner, Tubing. Rows include Size, Setting Depth, Amount of Cement, Top of Cement, Bottom of Cement.

Casing Fluid Level from Surface: How Determined? Date:
Casing Squeeze(s): to w / sacks of cement, to w / sacks of cement. Date:
Do you have a valid Oil & Gas Lease? Yes No
Depth and Type: Junk in Hole at Tools in Hole at Casing Leaks: Yes No Depth of casing leak(s):
Type Completion: ALT. I ALT. II Depth of: DV Tool: w / sacks of cement Port Collar: w / sack of cement
Packer Type: Size: Inch Set at: Feet
Total Depth: Plug Back Depth: Plug Back Method:

Geological Date:

Table with 4 columns: Formation Name, Formation Top, Formation Base, Completion Information. Rows 1 and 2.

UNDER PENALTY OF PERJURY I HEREBY ATTEST THAT THE INFORMATION CONTAINED HEREIN IS TRUE AND CORRECT TO THE BEST OF MY KNOWLEDGE

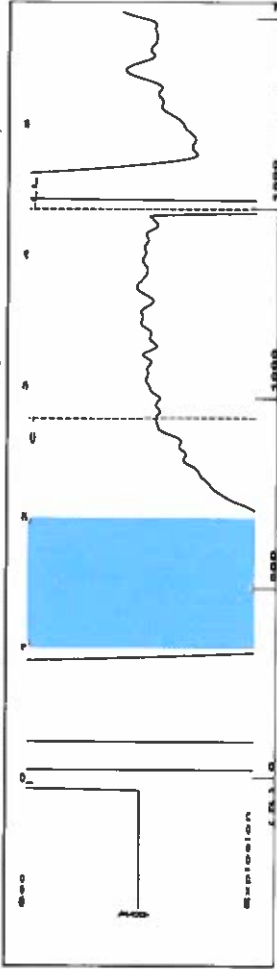
Submitted Electronically

Do NOT Write in This Space - KCC USE ONLY
Date Tested: Results: Date Plugged: Date Repaired: Date Put Back in Service:
Review Completed by: Comments:
TA Approved: Yes Denied Date:

Mail to the Appropriate KCC Conservation Office:

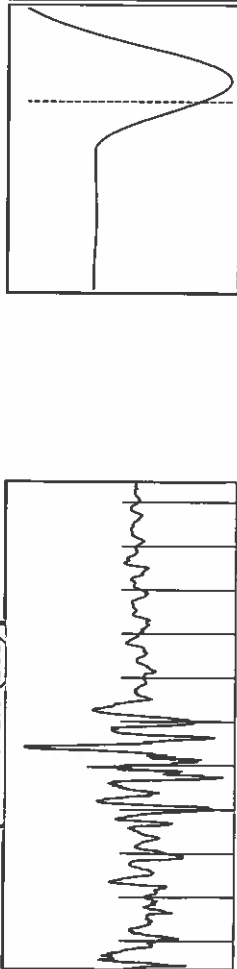
Table with 3 columns: District Office #, Address, Phone. Includes map of Kansas with numbered districts 1-4.

Group: Merit Energy Company-Ulysses Well: Dietz A-1 (acquired on: 08/02/22 15:52:55)



Filter Type High Pass Automatic Collar Count Yes Time 4.352 sec
 Manual Acoustic Veloc703.663 ft/s Manual JTS/sec 11.0988 Joints 47.3043 Jts
 Depth 1499.55 ft

[1.0 to 2.0 (Sec)]



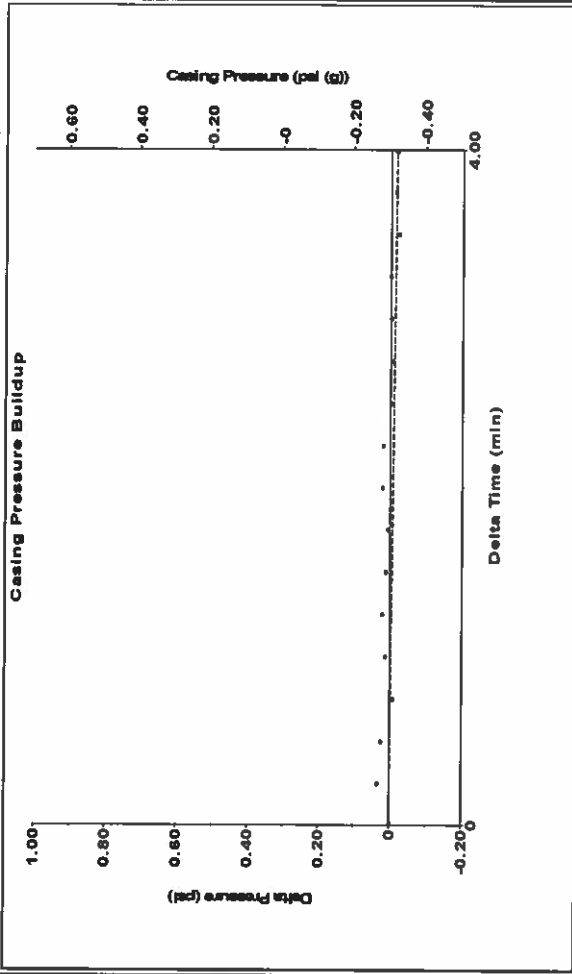
Analysis Method: Automatic

Group: Merit Energy Company-Ulysses Well: Dietz A-1 (acquired on: 08/02/22 15:52:55)

Production	Potential	Casing Pressure	Producing
Oil - * -	- * - BBL/D	-0.3 psi (g)	Annular
Water - * -	- * - BBL/D	-0.0 psi	Gas Flow
Gas - * -	- * - Mscf/D	4.00 min	% Liquid
IPR Method	Vogel	Gas/Liquid Interface Pressure	100 %
PBHP/SBHP	- * -	0.7 psi (g)	
Production Efficiency	0.0		
Oil 40 deg-API			
Water 1.05 Sp.Gr.H2O			
Gas 1.27 Sp.Gr.AIR			
Acoustic Velocity	689.13 ft/s	Liquid Level Depth	1499.55 ft
Formation Submergence		Tubing Intake Depth	22627.00 ft
Total Gaseous Liquid Column HT (TVD)	1320 ft	Formation Depth	2820.00 ft
Equivalent Gas Free Liquid HT (TVD)	1320 ft		
8/2/22B			

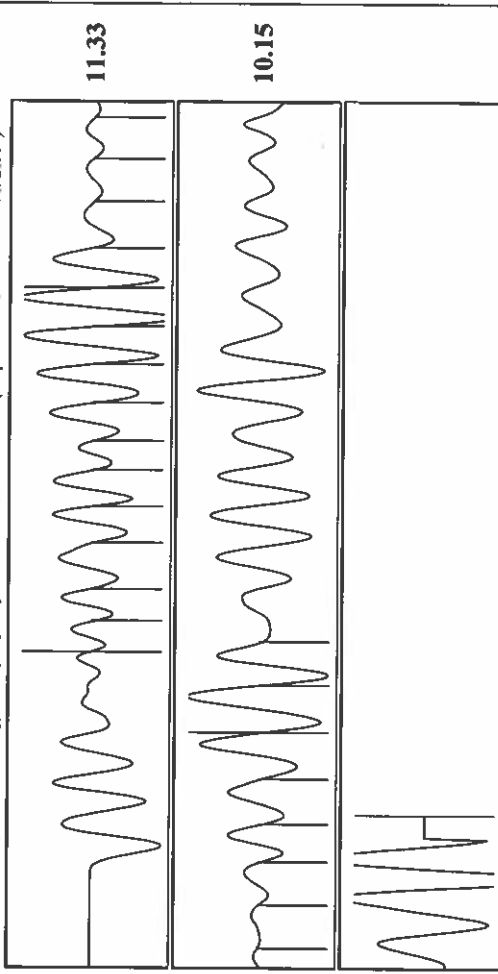
Tubing Intake 9606.3 psi (g)
 Producing BHP 601.0 psi (g)
 Static BHP - * - psi (g)

Group: Merit Energy Company-Ulysses Well: Dietz A-1 (acquired on: 08/02/22 15:52:55)



Change in Pressure -0.02 psi PT18865 Range 0 - ? psi
 Change in Time 4.00 min

Group: Merit Energy Company-Ulysses Well: Dietz A-1 (acquired on: 08/02/22 15:52:55)



Acoustic Velocity 689.13 ft/s Joints counted 22
 Joints Per Second 10.8696 jts/sec Joints to liquid level 47.3043
 Depth to liquid level 1499.55 ft Filter Width 13.0988
 Automatic Collar Count Yes Time to 1st Collar 0.728

Conservation Division
District Office No. 1
210 E. Frontview, Suite A
Dodge City, KS 67801



Phone: 620-682-7933
<http://kcc.ks.gov/>

Dwight D. Keen, Chair
Susan K. Duffy, Commissioner
Andrew J. French, Commissioner

Laura Kelly, Governor

August 10, 2022

Katherine McClurkan
Merit Energy Company, LLC
13727 Noel Road, Suite 1200
Dallas, TX 75240-7362

Re: Temporary Abandonment
API 15-067-00385-00-00
Dietz A 1
NE/4 Sec.24-28S-35W
Grant County, Kansas

Dear Katherine McClurkan:

"Your temporary abandonment (TA) application for the well listed above has been approved. In accordance with K.A.R. 82-3-111 the TA status of this well will expire 08/10/2023.

- * If you return this well to service or plug it, please notify the District Office.
- * If you sell this well you are required to file a Transfer of Operator form, T-1.
- * If the well will remain temporarily abandoned, you must submit a new TA application, CP-111, before 08/10/2023.

You may contact me at the number above if you have questions.

Very truly yours,

Michael Maier"