

KANSAS CORPORATION COMMISSION
OIL & GAS CONSERVATION DIVISION

TEMPORARY ABANDONMENT WELL APPLICATION

OPERATOR: License#
Name:
Address 1:
Address 2:
City: State: Zip:
Contact Person:
Phone:
Contact Person Email:
Field Contact Person:
Field Contact Person Phone:

API No. 15-
Spot Description:
Sec. Twp. S. R.
GPS Location: Lat: Long:
Datum: NAD27 NAD83 WGS84
County: Elevation:
Lease Name: Well #:
Well Type: Oil Gas OG WSW Other:
SWD Permit #: ENHR Permit #:
Gas Storage Permit #:
Spud Date: Date Shut-In:

Table with 7 columns: Conductor, Surface, Production, Intermediate, Liner, Tubing. Rows include Size, Setting Depth, Amount of Cement, Top of Cement, Bottom of Cement.

Casing Fluid Level from Surface: How Determined? Date:
Casing Squeeze(s): to w / sacks of cement, to w / sacks of cement. Date:
Do you have a valid Oil & Gas Lease? Yes No
Depth and Type: Junk in Hole at Tools in Hole at Casing Leaks: Yes No Depth of casing leak(s):
Type Completion: ALT. I ALT. II Depth of: DV Tool: w / sacks of cement Port Collar: w / sack of cement
Packer Type: Size: Inch Set at: Feet
Total Depth: Plug Back Depth: Plug Back Method:

Geological Data:

Table with 4 columns: Formation Name, Formation Top, Formation Base, Completion Information. Rows 1 and 2.

UNDER PENALTY OF PERJURY I HEREBY ATTEST THAT THE INFORMATION CONTAINED HEREIN IS TRUE AND CORRECT TO THE BEST OF MY KNOWLEDGE

Submitted Electronically

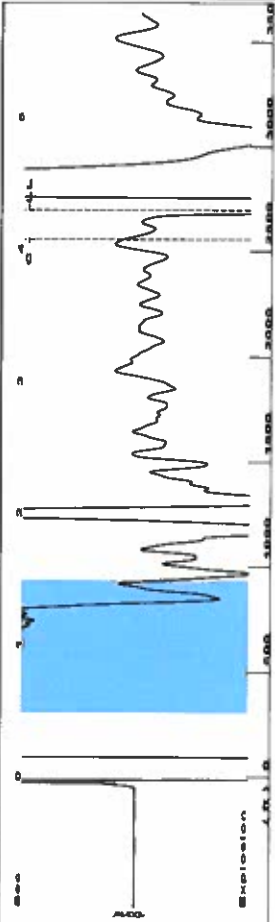
Do NOT Write in This Space - KCC USE ONLY
Date Tested: Results: Date Plugged: Date Repaired: Date Put Back in Service:
Review Completed by: Comments:
TA Approved: Yes Denied Date:

Mail to the Appropriate KCC Conservation Office:

Table with 2 columns: Office Address, Phone. Rows for District Office #1, #2, #3, #4.

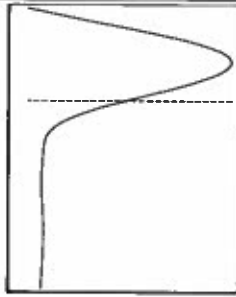
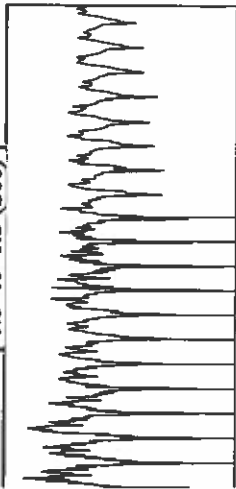


Group: Merit Energy Company-Ulysses Well: Askew A-2 (acquired on: 08/02/22 16:21:59)



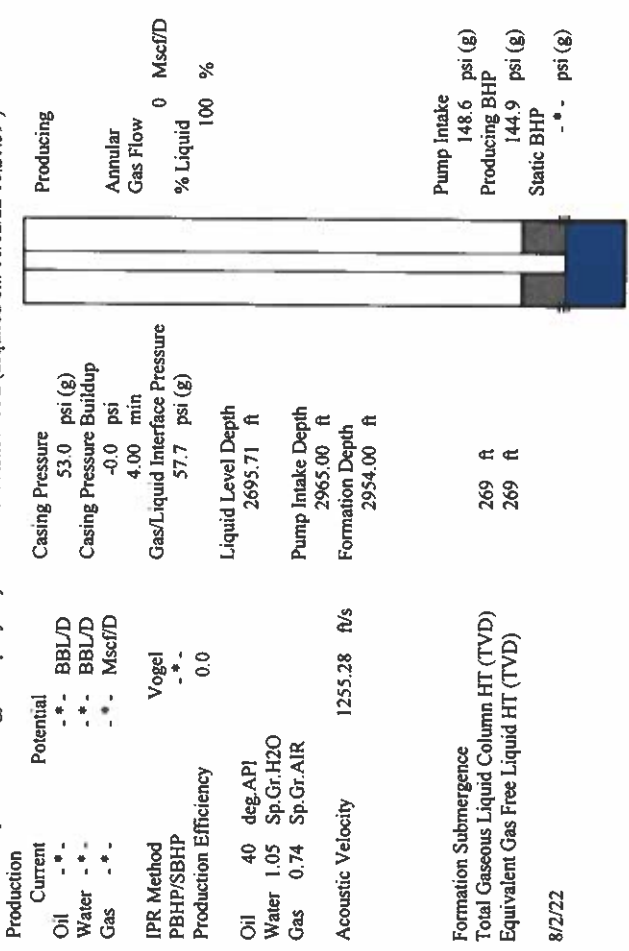
Filter Type High Pass Automatic Collar Count Yes Time 4.295 sec  
 Manual Acoustic Velocity 1252.96 ft/s Manual JTS/sec 19.7628 J/s  
 Depth 2695.71 ft

1.05 to 1.5 (Sec)



**Analysis Method: Automatic**

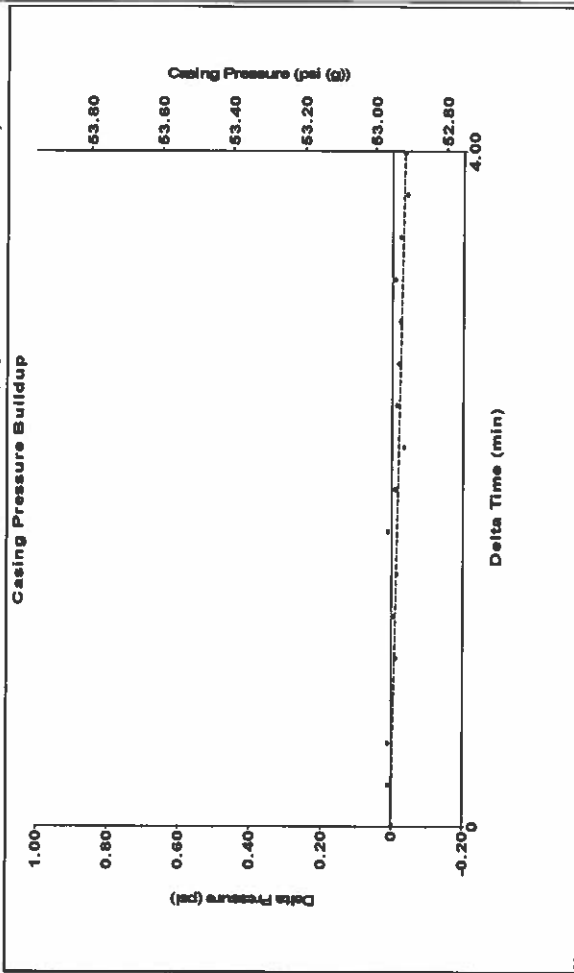
Group: Merit Energy Company-Ulysses Well: Askew A-2 (acquired on: 08/02/22 16:21:59)



Production	Potential	Casing Pressure	Producing
Oil - * -	BBL/D - *	53.0 psi (g)	Annular
Water - * -	BBL/D - *	-0.0 psi	Gas Flow 0 Mscf/D
Gas - * -	Mscf/D - *	4.00 min	% Liquid 100 %
IPR Method Vogel	Gas/Liquid Interface Pressure	57.7 psi (g)	
PBHP/SBHP - * -			
Production Efficiency 0.0	Liquid Level Depth		
Oil 40 deg-API	2695.71 ft		
Water 1.05 Sp.Gr.H2O	Pump Intake Depth		
Gas 0.74 Sp.Gr.AIR	2965.00 ft		
Acoustic Velocity 1255.28 ft/s	Formation Depth		
	2954.00 ft		
Formation Submergence			
Total Gaseous Liquid Column HT (TVD)	269 ft		
Equivalent Gas Free Liquid HT (TVD)	269 ft		

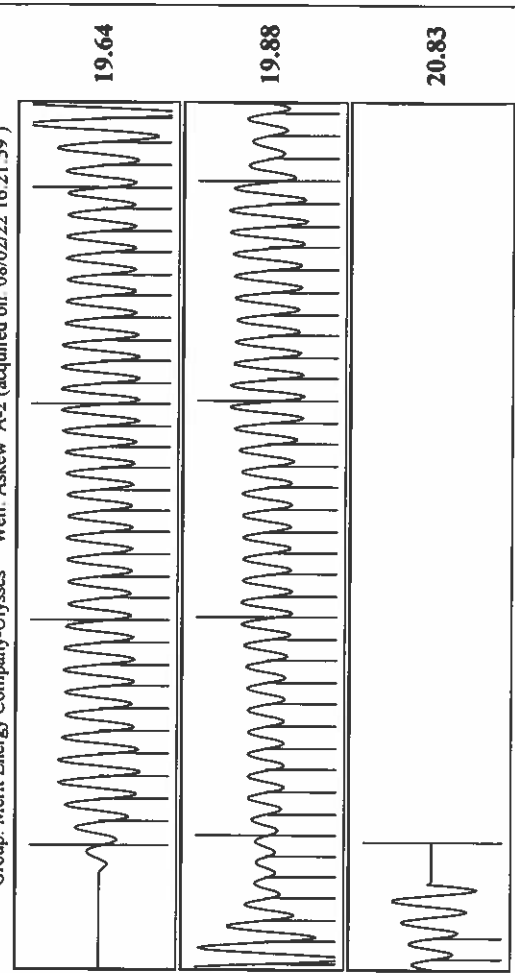
8/2/22

Group: Merit Energy Company-Ulysses Well: Askew A-2 (acquired on: 08/02/22 16:21:59)



Change in Pressure -0.03 psi PT18865 Range  
 Change in Time 4.00 min

Group: Merit Energy Company-Ulysses Well: Askew A-2 (acquired on: 08/02/22 16:21:59)



Acoustic Velocity	1255.28 ft/s	Joints counted	75
Joints Per Second	19.7994 Jts/sec	Joints to liquid level	85.0383
Depth to liquid level	2695.71 ft	Filter Width	17.7628
Automatic Collar Count	Yes	Time to 1st Collar	4.072

Conservation Division  
District Office No. 1  
210 E. Frontview, Suite A  
Dodge City, KS 67801



Phone: 620-682-7933  
<http://kcc.ks.gov/>

Dwight D. Keen, Chair  
Susan K. Duffy, Commissioner  
Andrew J. French, Commissioner

Laura Kelly, Governor

August 10, 2022

Katherine McClurkan  
Merit Energy Company, LLC  
13727 Noel Road, Suite 1200  
Dallas, TX 75240-7362

Re: Temporary Abandonment  
API 15-067-20435-00-00  
Askew A 2  
NE/4 Sec.23-27S-35W  
Grant County, Kansas

Dear Katherine McClurkan:

"Your temporary abandonment (TA) application for the well listed above has been approved. In accordance with K.A.R. 82-3-111 the TA status of this well will expire 08/10/2023.

- \* If you return this well to service or plug it, please notify the District Office.
- \* If you sell this well you are required to file a Transfer of Operator form, T-1.
- \* If the well will remain temporarily abandoned, you must submit a new TA application, CP-111, before 08/10/2023.

You may contact me at the number above if you have questions.

Very truly yours,

Michael Maier"