

KANSAS CORPORATION COMMISSION
OIL & GAS CONSERVATION DIVISION

TEMPORARY ABANDONMENT WELL APPLICATION

OPERATOR: License#
Name:
Address 1:
Address 2:
City: State: Zip:
Contact Person:
Phone:
Contact Person Email:
Field Contact Person:
Field Contact Person Phone:

API No. 15-
Spot Description:
Sec. Twp. S. R.
GPS Location: Lat: Long:
Datum: NAD27 NAD83 WGS84
County: Elevation:
Lease Name: Well #:
Well Type: Oil Gas OG WSW Other:
SWD Permit #: ENHR Permit #:
Gas Storage Permit #:
Spud Date: Date Shut-In:

Table with 7 columns: Conductor, Surface, Production, Intermediate, Liner, Tubing. Rows include Size, Setting Depth, Amount of Cement, Top of Cement, Bottom of Cement.

Casing Fluid Level from Surface: How Determined? Date:
Casing Squeeze(s): to w / sacks of cement, to w / sacks of cement. Date:
Do you have a valid Oil & Gas Lease? Yes No
Depth and Type: Junk in Hole at Tools in Hole at Casing Leaks: Yes No Depth of casing leak(s):
Type Completion: ALT. I ALT. II Depth of: DV Tool: w / sacks of cement Port Collar: w / sack of cement
Packer Type: Size: Inch Set at: Feet
Total Depth: Plug Back Depth: Plug Back Method:

Geological Date:

Table with 4 columns: Formation Name, Formation Top, Formation Base, Completion Information. Rows 1 and 2.

UNDER PENALTY OF PERJURY I HEREBY ATTEST THAT THE INFORMATION CONTAINED HEREIN IS TRUE AND CORRECT TO THE BEST OF MY KNOWLEDGE

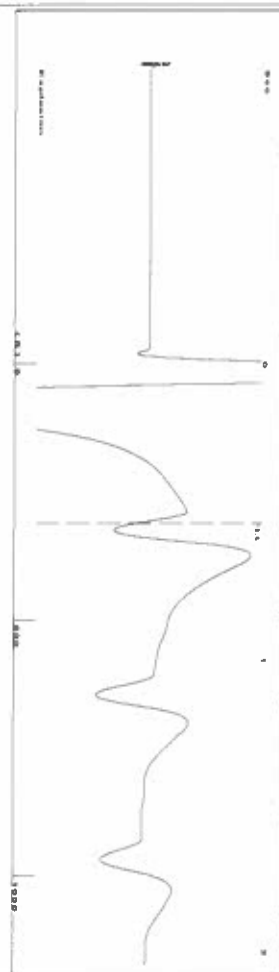
Submitted Electronically

Do NOT Write in This Space - KCC USE ONLY
Date Tested: Results: Date Plugged: Date Repaired: Date Put Back in Service:
Review Completed by: Comments:
TA Approved: Yes Denied Date:

Mail to the Appropriate KCC Conservation Office:

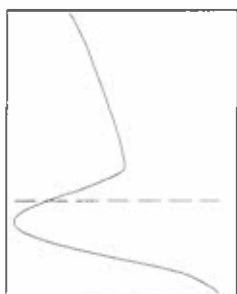
Map of Kansas with 4 numbered districts. Table with 3 columns: District Office Name, Address, Phone Number.

Group: SUBLETTE Well: Anton 1-21 (acquired on: 08/04/22 12:26:08)



Time 0.541 sec
 Joins 9.81309 ft
 Depth 311.08 ft

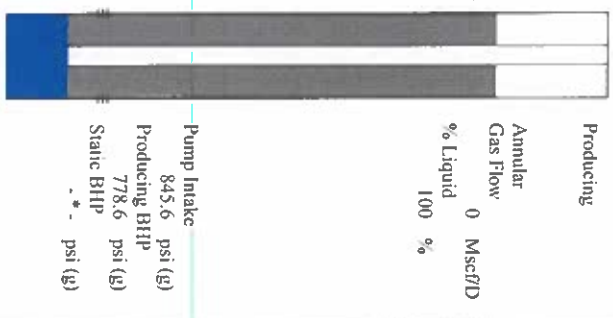
Liquid level calculated with
 user supplied Acoustic Velocity
 Acoustic Velocity 1150 ft/s



Analysis Method: Acoustic Velocity

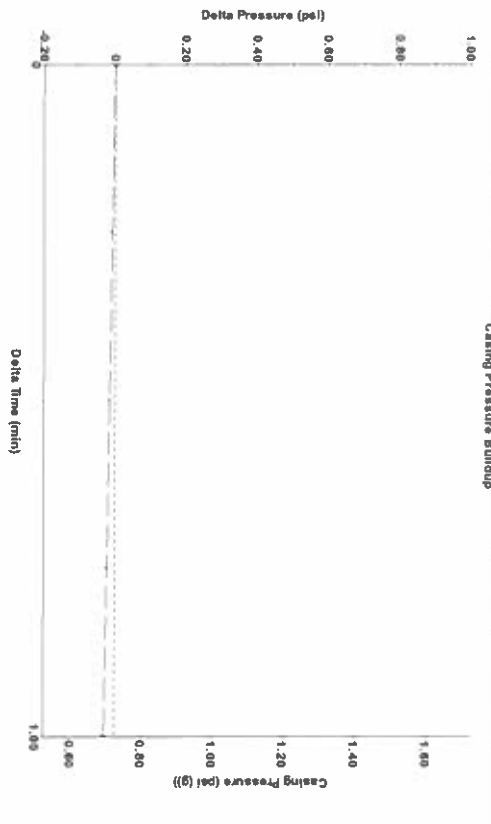
Group: SUBLETTE Well: Anton 1-21 (acquired on: 08/04/22 12:26:08)

Production Current	Potential	Casing Pressure
Oil -*- BB/L/D	BB/L/D	0.7 psi (g)
Water -*- BB/L/D	BB/L/D	Casing Pressure Buildup
Gas -*- Mscf/D	Mscf/D	-0.030 psi
IPR Method	Vogel	1.00 min
PHLP/SBHP	-*-	Gas/Liquid Interface Pressure
Production Efficiency	0.0	0.9 psi (g)
Oil 40 deg.API		Liquid Level Depth
Water 1.05 Sp.Gr.:H2O		311.08 ft
Gas 0.85 Sp.Gr.:AIR		Pump Intake Depth
Acoustic Velocity	1150 ft/s	2853.00 ft
		Formation Depth
		2640.00 ft



Producing Annular Gas Flow 0 Mscf/D
 % Liquid 100 %
 Pump Intake 845.6 psi (g)
 Producing BHP 778.6 psi (g)
 Static BHP -*- psi (g)

Group: SUBLETTE Well: Anton 1-21 (acquired on: 08/04/22 12:26:08)



Change in Pressure -0.03 psi
 Change in Time 1.00 min
 PT16716 Range
 0 - 2 psi

Group: SUBLETTE Well: Anton 1-21 (acquired on: 08/04/22 12:26:08)

Entered Acoustic Velocity for Liquid Level depth determination

August 11, 2022

Katherine McClurkan
Merit Energy Company, LLC
13727 Noel Road, Suite 1200
DALLAS, TX 75240-7362

Re: Temporary Abandonment
API 15-081-00511-00-00
Anton 1-21
SW/4 Sec.21-30S-33W
Haskell County, Kansas

Dear Katherine McClurkan:

Your application for Temporary Abandonment (TA) for the above-listed well is denied for the following reasons(s):

High Fluid Level

Pursuant to K.A.R. 82-3-111, the well must be plugged, or returned to service, or obtain temporary abandonment status by 09/10/2022.

This deadline does NOT override any compliance deadline given to you in any Commission Order.

You may contact me if you have any questions.

Sincerely,
Michael Maier
KCC DISTRICT 1