

KANSAS CORPORATION COMMISSION
OIL & GAS CONSERVATION DIVISION

Form must be Typed
Form must be signed

TEMPORARY ABANDONMENT WELL APPLICATION

All blanks must be complete

OPERATOR: License#
Name:
Address 1:
Address 2:
City: State: Zip:
Contact Person:
Phone:
Contact Person Email:
Field Contact Person:
Field Contact Person Phone:

API No. 15-
Spot Description:
Sec. Twp. S. R.
feet from N / S Line of Section
feet from E / W Line of Section
GPS Location: Lat: , Long:
Datum: NAD27 NAD83 WGS84
County: Elevation: GL KB
Lease Name: Well #:
Well Type: (check one) Oil Gas OG WSW Other:
SWD Permit #: ENHR Permit #:
Gas Storage Permit #:
Spud Date: Date Shut-In:

Table with 7 columns: Conductor, Surface, Production, Intermediate, Liner, Tubing. Rows include Size, Setting Depth, Amount of Cement, Top of Cement, Bottom of Cement.

Casing Fluid Level from Surface: How Determined? Date:
Casing Squeeze(s): to w / sacks of cement, to w / sacks of cement. Date:
Do you have a valid Oil & Gas Lease? Yes No
Depth and Type: Junk in Hole at Tools in Hole at Casing Leaks: Yes No Depth of casing leak(s):
Type Completion: ALT. I ALT. II Depth of: DV Tool: w / sacks of cement Port Collar: w / sack of cement
Packer Type: Size: Inch Set at: Feet
Total Depth: Plug Back Depth: Plug Back Method:

Geological Data:

Table with 4 columns: Formation Name, Formation Top, Formation Base, Completion Information. Rows 1 and 2.

UNDER PENALTY OF PERJURY I HEREBY ATTEST THAT THE INFORMATION CONTAINED HEREIN IS TRUE AND CORRECT TO THE BEST OF MY KNOWLEDGE

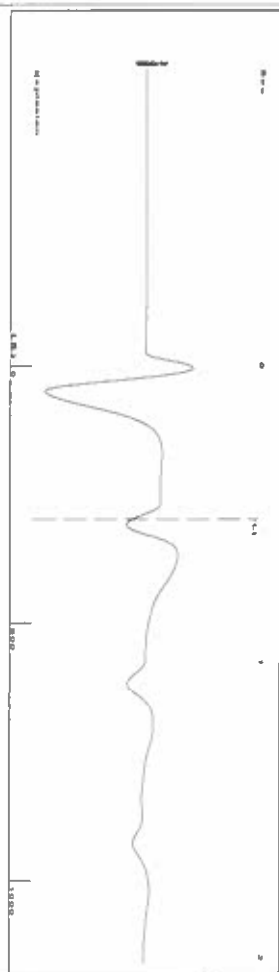
Submitted Electronically

Do NOT Write in This Space - KCC USE ONLY
Date Tested: Results: Date Plugged: Date Repaired: Date Put Back in Service:
Review Completed by: Comments:
TA Approved: Yes Denied Date:

Mail to the Appropriate KCC Conservation Office:

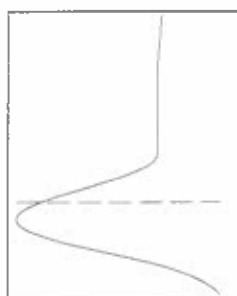
Table with 3 columns: District Office #, Address, Phone. Rows 1-4.

Group: SUBLETTE Well: Stewart 2-25 (acquired on: 08/04/22 09:34:20)



Liquid level calculated with user supplied Acoustic Velocity

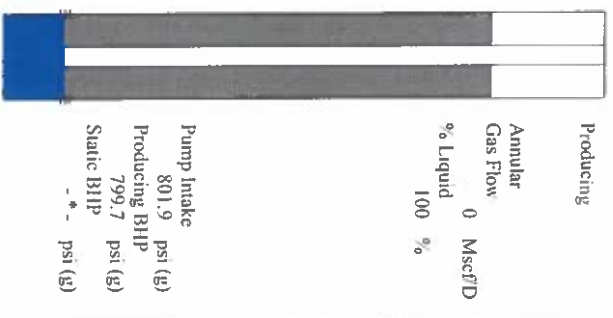
Acoustic Velocity 1150 f/s



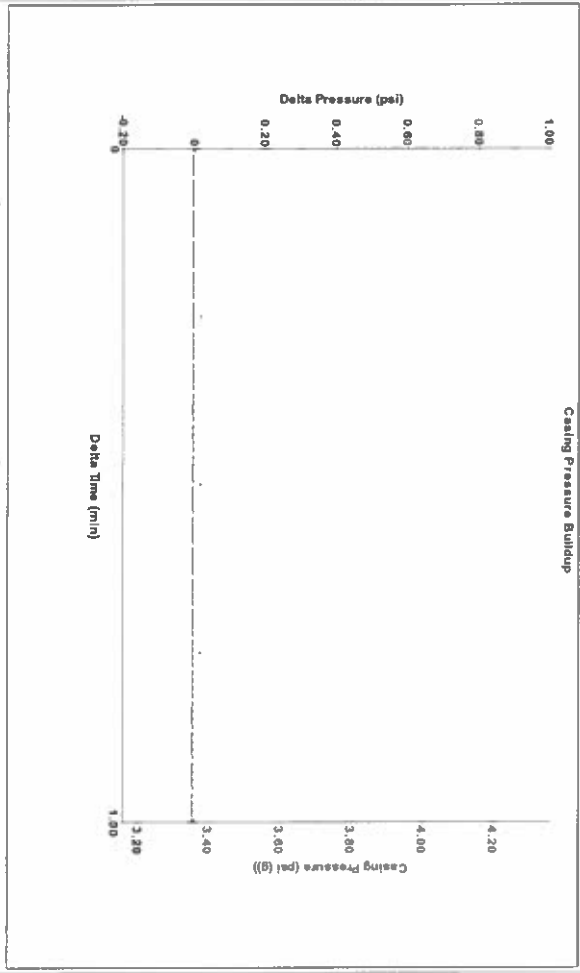
Analysis Method: Acoustic Velocity

Group: SUBLETTE Well: Stewart 2-25 (acquired on: 08/04/22 09:34:20)

Production Current	Potential	Casing Pressure	Producing
Oil -*-	BBL/D	3.4 psi (g)	Annular Gas Flow 0 Mscf/D
Water -*-	BBL/D	Casing Pressure Buildup -0.002 psi	% Liquid 100 %
Gas -*-	Mscf/D	1.00 min	
IPR Method PBHP/SBHP	Vogel -*-	Gas/Liquid Interface Pressure 3.5 psi (g)	
Production Efficiency 0.0		Liquid Level Depth 299.00 ft	
Oil 40 deg API		Pump Intake Depth 2693.00 ft	
Water 1.05 Sp.Gr.H2O		Formation Depth 2686.00 ft	
Gas 0.85 Sp.Gr.AIR			
Acoustic Velocity 1150 f/s			



Group: SUBLETTE Well: Stewart 2-25 (acquired on: 08/04/22 09:34:20)



Change in Pressure -0.00 psi
Change in Time 1.00 min
PT16716 Range 0 - ? psi

Group: SUBLETTE Well: Stewart 2-25 (acquired on: 08/04/22 09:34:20)

Entered Acoustic Velocity for Liquid Level depth determination

Conservation Division
District Office No. 1
210 E. Frontview, Suite A
Dodge City, KS 67801



Phone: 620-682-7933
<http://kcc.ks.gov/>

Dwight D. Keen, Chair
Susan K. Duffy, Commissioner
Andrew J. French, Commissioner

Laura Kelly, Governor

August 11, 2022

Katherine McClurkan
Merit Energy Company, LLC
13727 Noel Road, Suite 1200
DALLAS, TX 75240-7362

Re: Temporary Abandonment
API 15-081-21328-00-00
Stewart 2-25
NW/4 Sec.25-30S-33W
Haskell County, Kansas

Dear Katherine McClurkan:

Your application for Temporary Abandonment (TA) for the above-listed well is denied for the following reasons(s):

High Fluid Level

Pursuant to K.A.R. 82-3-111, the well must be plugged, or returned to service, or obtain temporary abandonment status by 09/10/2022.

This deadline does NOT override any compliance deadline given to you in any Commission Order.

You may contact me if you have any questions.

Sincerely,
Michael Maier
KCC DISTRICT 1