

KANSAS CORPORATION COMMISSION
OIL & GAS CONSERVATION DIVISION

TEMPORARY ABANDONMENT WELL APPLICATION

OPERATOR: License#
Name:
Address 1:
Address 2:
City: State: Zip:
Contact Person:
Phone:
Contact Person Email:
Field Contact Person:
Field Contact Person Phone:

API No. 15-
Spot Description:
Sec. Twp. S. R.
GPS Location: Lat: Long:
Datum: NAD27 NAD83 WGS84
County: Elevation:
Lease Name: Well #:
Well Type: Oil Gas OG WSW Other:
SWD Permit #: ENHR Permit #:
Gas Storage Permit #:
Spud Date: Date Shut-In:

Table with 7 columns: Conductor, Surface, Production, Intermediate, Liner, Tubing. Rows include Size, Setting Depth, Amount of Cement, Top of Cement, Bottom of Cement.

Casing Fluid Level from Surface: How Determined? Date:
Casing Squeeze(s): to w / sacks of cement, to w / sacks of cement. Date:
Do you have a valid Oil & Gas Lease? Yes No
Depth and Type: Junk in Hole at Tools in Hole at Casing Leaks: Yes No Depth of casing leak(s):
Type Completion: ALT. I ALT. II Depth of: DV Tool: w / sacks of cement Port Collar: w / sack of cement
Packer Type: Size: Inch Set at: Feet
Total Depth: Plug Back Depth: Plug Back Method:

Geological Data:

Table with 4 columns: Formation Name, Formation Top, Formation Base, Completion Information. Rows 1 and 2.

UNDER PENALTY OF PERJURY I HEREBY ATTEST THAT THE INFORMATION CONTAINED HEREIN IS TRUE AND CORRECT TO THE BEST OF MY KNOWLEDGE

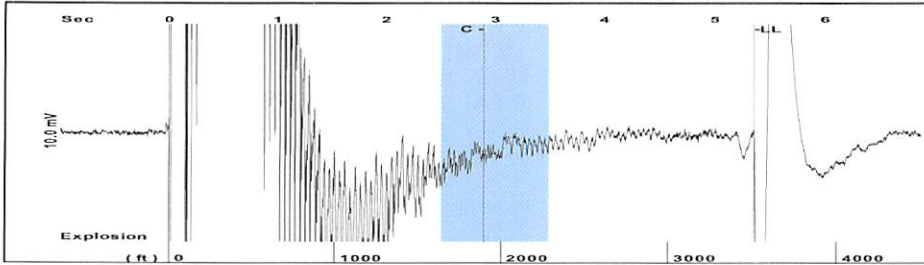
Submitted Electronically

Do NOT Write in This Space - KCC USE ONLY
Date Tested: Results: Date Plugged: Date Repaired: Date Put Back in Service:
Review Completed by: Comments:
TA Approved: Yes Denied Date:

Mail to the Appropriate KCC Conservation Office:

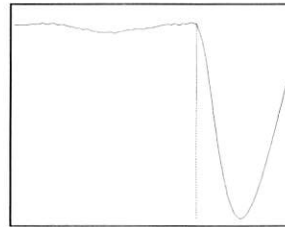
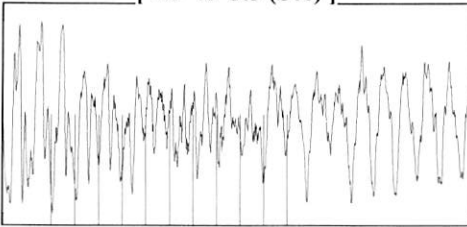
Table with 2 columns: Office Address, Phone. Rows for District Office #1, #2, #3, #4.

Group: Stratakan Well: Lousch D#1 (acquired on: 07/12/22 11:36:20 )



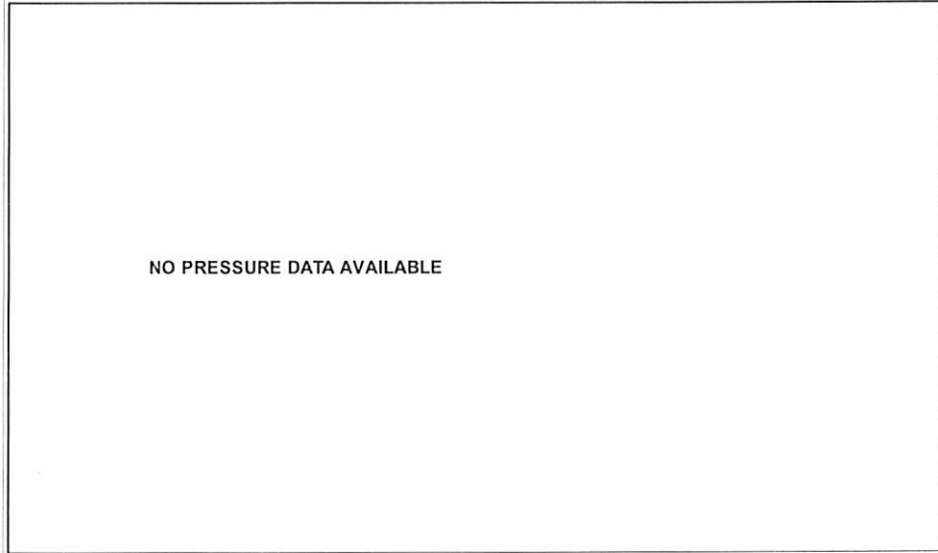
Filter Type High Pass Automatic Collar Count Yes Time 5.36 sec  
 Manual Acoustic Velo 1252.96 ft/s Manual JTS/sec 19.7628 Joints 110.812 Jts  
 Depth 3512.73 ft

[ 2.5 to 3.5 (Sec) ]



Analysis Method: Automatic

Group: Stratakan Well: Lousch D#1 (acquired on: 07/12/22 11:36:20 )



Change in Pressure -0.57 psi PT 14970  
 Range 0 - ? psi  
 Change in Time 0.75 min

Group: Stratakan Well: Lousch D#1 (acquired on: 07/12/22 11:36:20 )

Production  
 Current Potential  
 Oil - \* - 0.0 BBL/D  
 Water - \* - 0.0 BBL/D  
 Gas - \* - 0.0 Mscf/D

IPR Method Vogel  
 PBHP/SBHP 0.61  
 Production Efficiency 57.9

Oil 40 deg.API  
 Water 1.05 Sp.Gr.H2O  
 Gas 0.68 Sp.Gr.AIR

Acoustic Velocity 1310.72 ft/s

Casing Pressure 34.5 psi (g)  
 Casing Pressure Buildup -0.6 psi  
 0.75 min  
 Gas/Liquid Interface Pressure 38.7 psi (g)

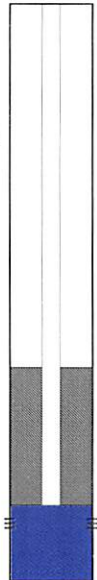
Liquid Level Depth 3512.73 ft

Pump Intake Depth 5100.00 ft

Formation Depth 5305.00 ft

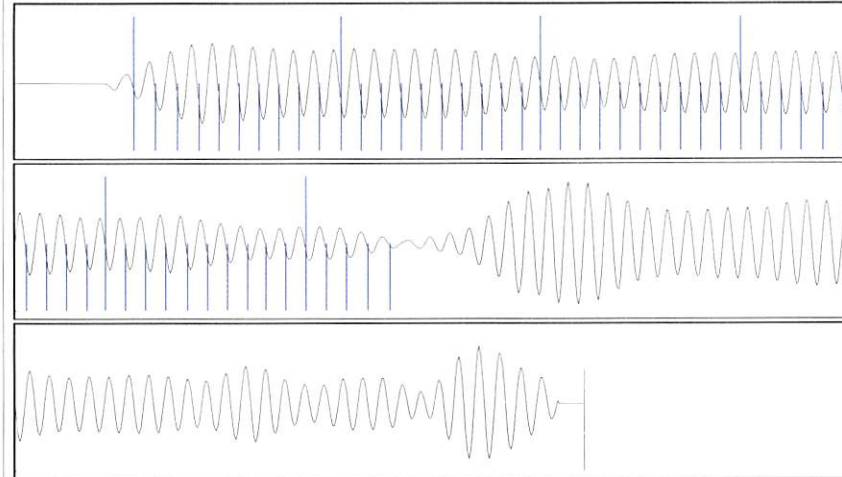
Formation Submergence  
 Total Gaseous Liquid Column HT (TVD) 1587 ft  
 Equivalent Gas Free Liquid HT (TVD) 1587 ft

Acoustic Test



Producing  
 Annular Gas Flow 0 Mscf/D  
 % Liquid 100 %  
 Pump Intake 568.2 psi (g)  
 Producing BHP 661.4 psi (g)  
 Static BHP 1090.8 psi (g)

Group: Stratakan Well: Lousch D#1 (acquired on: 07/12/22 11:36:20 )



Acoustic Velocity 1310.72 ft/s Joints counted 54  
 Joints Per Second 20.6738 jts/sec Joints to liquid level 110.812  
 Depth to liquid level 3512.73 ft Filter Width 17.7628 21.7628  
 Automatic Collar Count Yes Time to 1st Collar 0.284 2.896

Conservation Division  
District Office No. 1  
210 E. Frontview, Suite A  
Dodge City, KS 67801



Phone: 620-682-7933  
<http://kcc.ks.gov/>

Dwight D. Keen, Chair  
Susan K. Duffy, Commissioner  
Andrew J. French, Commissioner

Laura Kelly, Governor

August 18, 2022

Justin Prater  
StrataKan Exploration, LLC  
100 S MAIN ST  
PLAINVILLE, KS 67663-2234

Re: Temporary Abandonment  
API 15-033-21043-00-00  
LOUSCH D 1  
SW/4 Sec.31-32S-18W  
Comanche County, Kansas

Dear Justin Prater:

"Your temporary abandonment (TA) application for the well listed above has been approved. In accordance with K.A.R. 82-3-111 the TA status of this well will expire 08/18/2023.

- \* If you return this well to service or plug it, please notify the District Office.
- \* If you sell this well you are required to file a Transfer of Operator form, T-1.
- \* If the well will remain temporarily abandoned, you must submit a new TA application, CP-111, before 08/18/2023.

You may contact me at the number above if you have questions.

Very truly yours,

Michael Maier"