

KANSAS CORPORATION COMMISSION
OIL & GAS CONSERVATION DIVISION

TEMPORARY ABANDONMENT WELL APPLICATION

OPERATOR: License#
Name:
Address 1:
Address 2:
City: State: Zip:
Contact Person:
Phone:
Contact Person Email:
Field Contact Person:
Field Contact Person Phone:

API No. 15-
Spot Description:
Sec. Twp. S. R.
GPS Location: Lat: Long:
Datum: NAD27 NAD83 WGS84
County: Elevation:
Lease Name: Well #:
Well Type: Oil Gas OG WSW Other:
SWD Permit #: ENHR Permit #:
Gas Storage Permit #:
Spud Date: Date Shut-In:

Table with 7 columns: Conductor, Surface, Production, Intermediate, Liner, Tubing. Rows include Size, Setting Depth, Amount of Cement, Top of Cement, Bottom of Cement.

Casing Fluid Level from Surface: How Determined? Date:
Casing Squeeze(s): to w / sacks of cement, to w / sacks of cement. Date:
Do you have a valid Oil & Gas Lease? Yes No
Depth and Type: Junk in Hole at Tools in Hole at Casing Leaks: Yes No Depth of casing leak(s):
Type Completion: ALT. I ALT. II Depth of: DV Tool: w / sacks of cement Port Collar: w / sack of cement
Packer Type: Size: Inch Set at: Feet
Total Depth: Plug Back Depth: Plug Back Method:

Geological Data:

Table with 4 columns: Formation Name, Formation Top, Formation Base, Completion Information. Rows 1 and 2.

UNDER PENALTY OF PERJURY I HEREBY ATTEST THAT THE INFORMATION CONTAINED HEREIN IS TRUE AND CORRECT TO THE BEST OF MY KNOWLEDGE

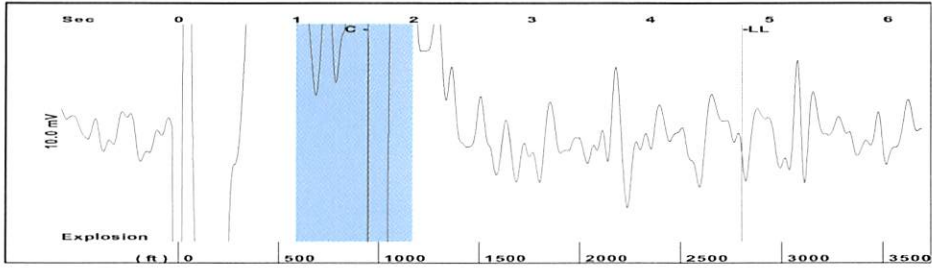
Submitted Electronically

Do NOT Write in This Space - KCC USE ONLY
Date Tested: Results: Date Plugged: Date Repaired: Date Put Back in Service:
Review Completed by: Comments:
TA Approved: Yes Denied Date:

Mail to the Appropriate KCC Conservation Office:

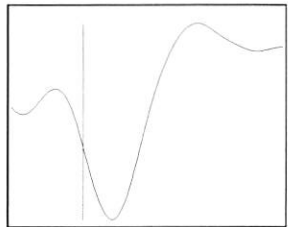
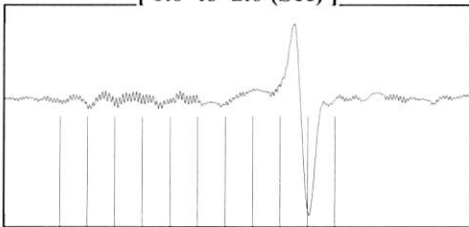
Table with 2 columns: Office Address, Phone. Rows for District Office #1, #2, #3, #4.

Group: Stratakan Well: JC A#2 (acquired on: 08/02/22 08:39:38)



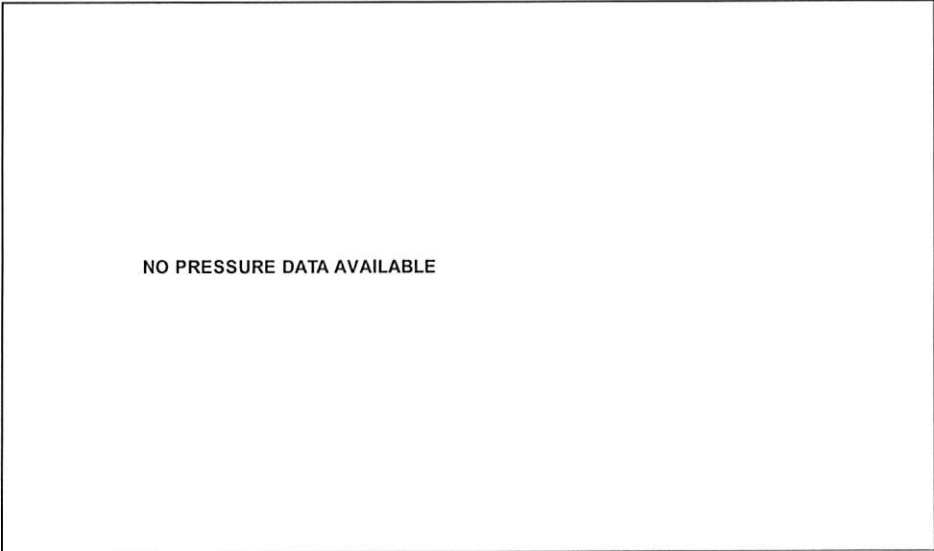
Filter Type High Pass Automatic Collar Count Yes Time 4.779 sec
 Manual Acoustic Velo 1074.58 ft/s Manual JTS/sec 16.9492 Joints 88.5 Jts
 Depth 2805.45 ft

[1.0 to 2.0 (Sec)]



Analysis Method: Automatic

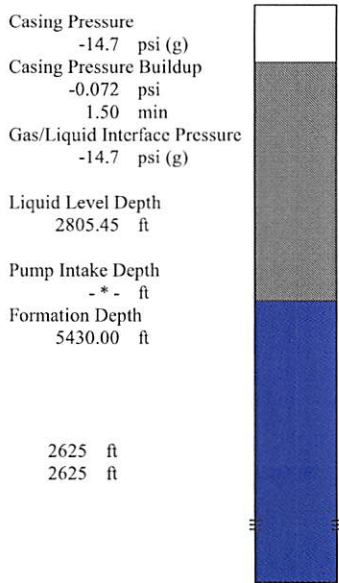
Group: Stratakan Well: JC A#2 (acquired on: 08/02/22 08:39:38)



Change in Pressure -0.07 psi PT 14970
 Range 0 - ? psi
 Change in Time 1.50 min

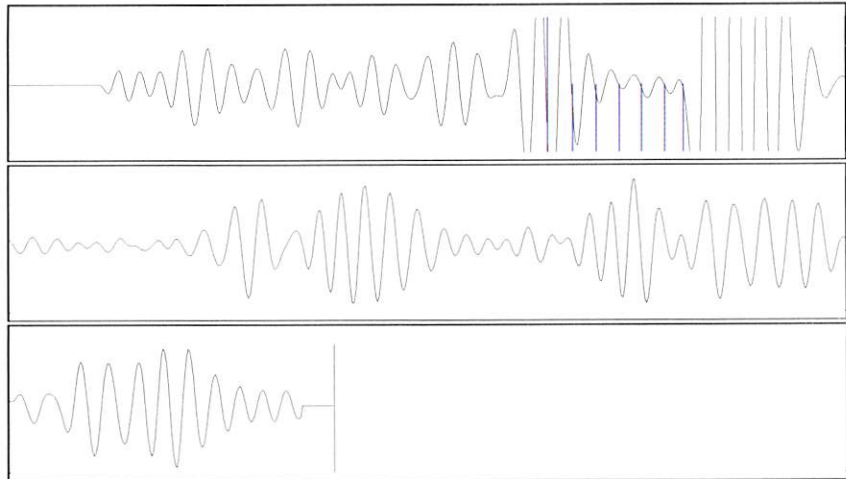
Group: Stratakan Well: JC A#2 (acquired on: 08/02/22 08:39:38)

Production Current Potential Casing Pressure
 Oil - * - BBL/D -14.7 psi (g)
 Water - * - BBL/D Casing Pressure Buildup
 Gas - * - Mscf/D -0.072 psi
 1.50 min
 IPR Method Vogel Gas/Liquid Interface Pressure
 PBHP/SBHP - * - -14.7 psi (g)
 Production Efficiency 0.0
 Liquid Level Depth
 Oil 40 deg.API 2805.45 ft
 Water 1.05 Sp.Gr.H2O
 Gas 0.70 Sp.Gr.AIR
 Pump Intake Depth
 Acoustic Velocity 1174.07 ft/s Formation Depth
 5430.00 ft
 Formation Submergence
 Total Gaseous Liquid Column HT (TVD) 2625 ft
 Equivalent Gas Free Liquid HT (TVD) 2625 ft
 Acoustic Test



Producing
 Annular Gas Flow - * - Mscf/D
 % Liquid 100 %
 Pump Intake - * - psi (g)
 Producing BHP 1178.6 psi (g)
 Static BHP 119.5 psi (g)

Group: Stratakan Well: JC A#2 (acquired on: 08/02/22 08:39:38)



18.52

Acoustic Velocity 1174.07 ft/s Joints counted 6
 Joints Per Second 18.5185 jts/sec Joints to liquid level 88.5
 Depth to liquid level 2805.45 ft Filter Width 14.9492 18.9492
 Automatic Collar Count Yes Time to 1st Collar 1.288 1.612

Conservation Division
District Office No. 1
210 E. Frontview, Suite A
Dodge City, KS 67801



Phone: 620-682-7933
<http://kcc.ks.gov/>

Dwight D. Keen, Chair
Susan K. Duffy, Commissioner
Andrew J. French, Commissioner

Laura Kelly, Governor

August 19, 2022

Justin Prater
StrataKan Exploration, LLC
100 S MAIN ST
PLAINVILLE, KS 67663-2234

Re: Temporary Abandonment
API 15-025-10098-00-00
HARPER RANCH JC2
SW/4 Sec.02-34S-21W
Clark County, Kansas

Dear Justin Prater:

"Your temporary abandonment (TA) application for the well listed above has been approved. In accordance with K.A.R. 82-3-111 the TA status of this well will expire 08/19/2023.

- * If you return this well to service or plug it, please notify the District Office.
- * If you sell this well you are required to file a Transfer of Operator form, T-1.
- * If the well will remain temporarily abandoned, you must submit a new TA application, CP-111, before 08/19/2023.

You may contact me at the number above if you have questions.

Very truly yours,

Michael Maier"