

KANSAS CORPORATION COMMISSION
OIL & GAS CONSERVATION DIVISION

TEMPORARY ABANDONMENT WELL APPLICATION

All blanks must be complete

OPERATOR: License# _____
Name: _____
Address 1: _____
Address 2: _____
City: _____ State: _____ Zip: _____ + _____
Contact Person: _____
Phone:(_____) _____
Contact Person Email: _____
Field Contact Person: _____
Field Contact Person Phone: (_____) _____

API No. 15- _____
Spot Description: _____
____ - ____ - ____ - ____ Sec. _____ Twp. _____ S. R. _____ E W
_____ feet from N / S Line of Section
_____ feet from E / W Line of Section
GPS Location: Lat: _____, Long: _____
(e.g. xx.xxxxx) (e.g. -xxx.xxxxx)
Datum: NAD27 NAD83 WGS84
County: _____ Elevation: _____ GL KB
Lease Name: _____ Well #: _____
Well Type: (check one) Oil Gas OG WSW Other: _____
 SWD Permit #: _____ ENHR Permit #: _____
 Gas Storage Permit #: _____
Spud Date: _____ Date Shut-In: _____

	Conductor	Surface	Production	Intermediate	Liner	Tubing
Size						
Setting Depth						
Amount of Cement						
Top of Cement						
Bottom of Cement						

Casing Fluid Level from Surface: _____ How Determined? _____ Date: _____
Casing Squeeze(s): _____ to _____ w / _____ sacks of cement, _____ to _____ w / _____ sacks of cement. Date: _____
(top) (bottom) (top) (bottom)
Do you have a valid Oil & Gas Lease? Yes No
Depth and Type: Junk in Hole at _____ Tools in Hole at _____ Casing Leaks: Yes No Depth of casing leak(s): _____
(depth) (depth)
Type Completion: ALT. I ALT. II Depth of: DV Tool: _____ w / _____ sacks of cement Port Collar: _____ w / _____ sack of cement
(depth) (depth)
Packer Type: _____ Size: _____ Inch Set at: _____ Feet
Total Depth: _____ Plug Back Depth: _____ Plug Back Method: _____

Geological Data:

Formation Name	Formation Top	Formation Base	Completion Information
1. _____	At: _____	to _____ Feet	Perforation Interval _____ to _____ Feet or Open Hole Interval _____ to _____ Feet
2. _____	At: _____	to _____ Feet	Perforation Interval _____ to _____ Feet or Open Hole Interval _____ to _____ Feet

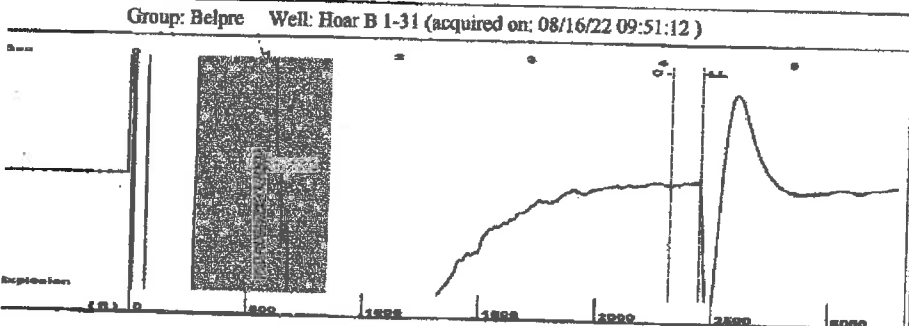
UNDER PENALTY OF PERJURY I HEREBY ATTEST THAT THE INFORMATION CONTAINED HEREIN IS TRUE AND CORRECT TO THE BEST OF MY KNOWLEDGE

Submitted Electronically

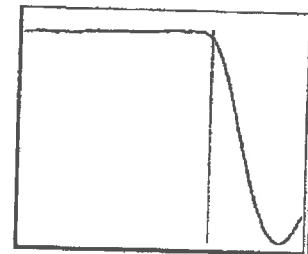
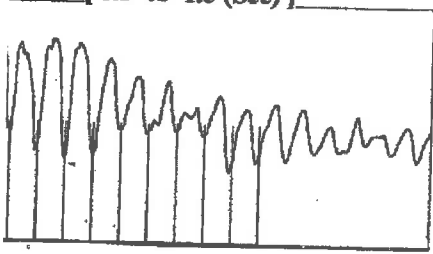
Do NOT Write in This Space - KCC USE ONLY	Date Tested: _____	Results: _____	Date Plugged: _____	Date Repaired: _____	Date Put Back in Service: _____
	Review Completed by: _____ Comments: _____				
TA Approved: <input type="checkbox"/> Yes <input type="checkbox"/> Denied Date: _____					

Mail to the Appropriate KCC Conservation Office:

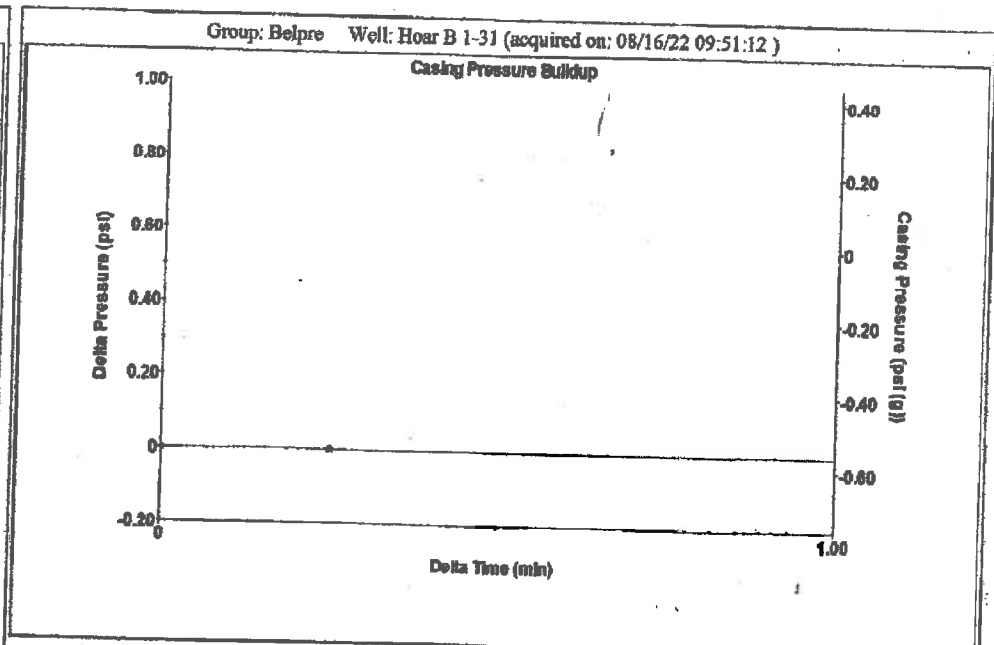
	KCC District Office #1 - 210 E. Frontview, Suite A, Dodge City, KS 67801	Phone 620.682.7933
	KCC District Office #2 - 3450 N. Rock Road, Building 600, Suite 601, Wichita, KS 67226	Phone 316.337.7400
	KCC District Office #3 - 137 E. 21st St., Chanute, KS 66720	Phone 620.902.6450
	KCC District Office #4 - 2301 E. 13th Street, Hays, KS 67601-2651	Phone 785.261.6250



Type High Pass Automatic Collar Count Yes Time 4.313 sec
 Acoustic Velocity 1097.72 ft/s Manual JTS/sec 17.5747 Joints 78.2326 Jts
 Depth 2443.21 ft



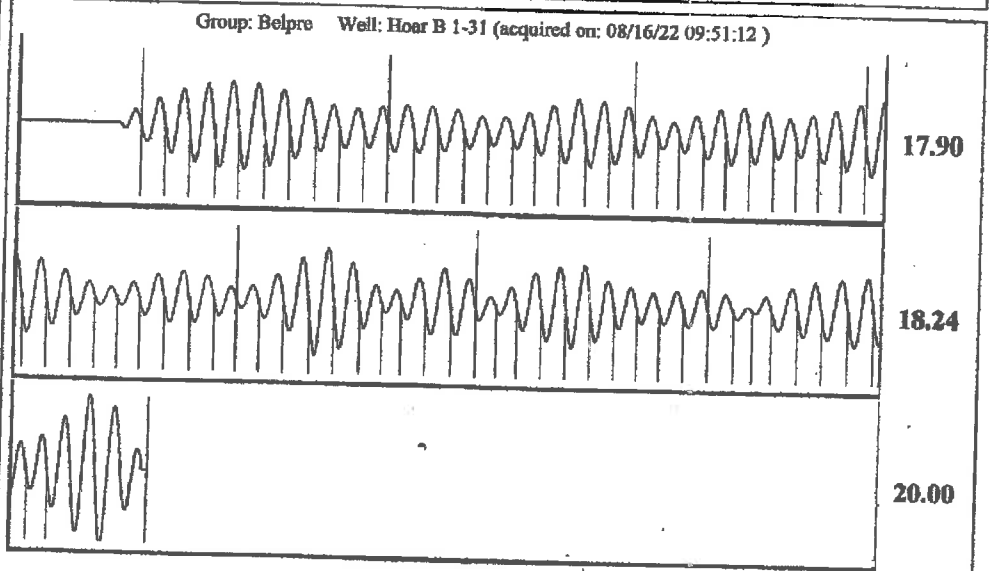
Analysis Method: Automatic



Change in Pressure -0.00 psi PT13440
 Change in Time 0.25 min Range 0 - 7 psi

Group: Belpre Well: Hoar B 1-31 (acquired on: 08/16/22 09:51:12)

Potential - * - BBL/D - * - BBL/D - * - Mscf/D Vogel - * - 0.0 40 deg API 1.05 Sp.Gr.H2O 0.85 Sp.Gr.AIR Acoustic Velocity 1132.95 ft/s	Casing Pressure -0.6 psi (g) Casing Pressure Buildup -0.0 psi 0.25 min Gas/Liquid Interface Pressure 0.5 psi (g) Liquid Level Depth 2443.21 ft Pump Intake Depth 4373.00 ft Formation Depth 4373.00 ft Gaseous Liquid Column HT (TVD) 1930 ft Gas Free Liquid HT (TVD) 1930 ft	Producing Annular Gas Flow 0 Mscf/D % Liquid 100 % Pump Intake 645.5 psi (g) Producing BHP 645.5 psi (g) Static BHP - * - psi (g)
-------------------------------------------------------------------------------------------------------------------------------------------------------------------------	--------------------------------------------------------------------------------------------------------------------------------------------------------------------------------------------------------------------------------------------------------------------------------------------------------------------------------	-----------------------------------------------------------------------------------------------------------------------------------------------------------------



Acoustic Velocity	1132.95 ft/s	Joints counted	69
Joints Per Second	18.1388 jts/sec	Joints to liquid level	78.2326
Depth to liquid level	2443.21 ft	Filter Width	15.5747
Automatic Collar Count	Yes	Time to 1st Collar	0.28
			19.5747
			4.084

F. G. HOLL COMPANY, L. L. C.

9431 EAST CENTRAL, SUITE 100
WICHITA, KS 67206-2543
(316) 684-8481
FAX (316) 684-0594

August 19, 2022

Attention: Mr. Michael Maier
Conservation Division
District Office No. 1
210 E. Frontview, Suite A
Dodge City, KS 67801-2651

Re: Seeking an extension of time to return the Hoar "B" No.1-31 well back to production.
API No. 15-145-20643-00-00
N/2 N/2 NW/4
Sec.31-23S-17W
Pawnee Co., KS

Dear Michael,

I am writing to request for an extension of time after submitting the CP-111 for renewal of Temporary Abandonment status for the Hoar "B" No.1-31. The well is at the ten year limit for Temporary Abandonment status.

F.G. Holl Company, L.L.C. has attained a lease ratification from the current mineral and land owner Mark Greene covering the NW/4 of section 31-23S-17W Pawnee Co., KS.

The lease is currently planted in irrigated milo and will be harvested around the end of September to the beginning of October. We are unable to move in on the well under these conditions.

F.G. Holl Company, L.L.C.is requesting a 4 month time extension for the well-site to be dried enough to allow access the well location and return the well to production.

Sincerely,

Franklin R. Greenbaum
Petroleum Geologist

Cc: Rob Long, Field Superintendent, F.G. Holl Company, LLC.

August 19, 2022

Loveness Mpanje
F. G. Holl Company L.L.C.
9431 E CENTRAL STE 100
WICHITA, KS 67206-2563

Re: Temporary Abandonment
API 15-145-20643-00-00
HOAR B 1-31
NW/4 Sec.31-23S-17W
Pawnee County, Kansas

Dear Loveness Mpanje:

Your application for Temporary Abandonment (TA) for the above-listed well is denied for the following reasons(s):

Shut-in Over 10 years

Pursuant to K.A.R. 82-3-111, the well must be plugged or returned to service by 09/18/2022.

If you wish to instead file an application for an exception to the 10-year limitation of K.A.R. 82-3-111, demonstrating why it is necessary to TA the well for more than 10 years, then you must file the application for an exception by 09/18/2022.

This deadline does NOT override any compliance deadline given to you in any Commission Order.

You may contact me if you have any questions.

Sincerely,
Michael Maier
KCC DISTRICT 1