

KANSAS CORPORATION COMMISSION
OIL & GAS CONSERVATION DIVISION

TEMPORARY ABANDONMENT WELL APPLICATION

OPERATOR: License#
Name:
Address 1:
Address 2:
City: State: Zip:
Contact Person:
Phone:
Contact Person Email:
Field Contact Person:
Field Contact Person Phone:

API No. 15-
Spot Description:
Sec. Twp. S. R.
GPS Location: Lat: Long:
Datum: NAD27 NAD83 WGS84
County: Elevation:
Lease Name: Well #:
Well Type: Oil Gas OG WSW Other:
SWD Permit #: ENHR Permit #:
Gas Storage Permit #:
Spud Date: Date Shut-In:

Table with 7 columns: Conductor, Surface, Production, Intermediate, Liner, Tubing. Rows include Size, Setting Depth, Amount of Cement, Top of Cement, Bottom of Cement.

Casing Fluid Level from Surface: How Determined? Date:
Casing Squeeze(s): to w / sacks of cement, to w / sacks of cement. Date:
Do you have a valid Oil & Gas Lease? Yes No
Depth and Type: Junk in Hole at Tools in Hole at Casing Leaks: Yes No Depth of casing leak(s):
Type Completion: ALT. I ALT. II Depth of: DV Tool: w / sacks of cement Port Collar: w / sack of cement
Packer Type: Size: Inch Set at: Feet
Total Depth: Plug Back Depth: Plug Back Method:

Geological Data:

Table with 4 columns: Formation Name, Formation Top, Formation Base, Completion Information. Rows 1 and 2.

UNDER PENALTY OF PERJURY I HEREBY ATTEST THAT THE INFORMATION CONTAINED HEREIN IS TRUE AND CORRECT TO THE BEST OF MY KNOWLEDGE

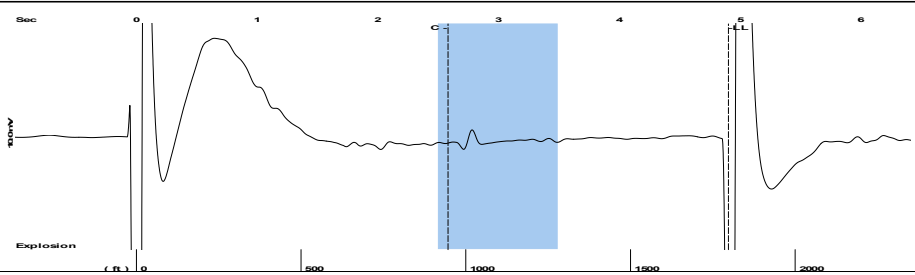
Submitted Electronically

Do NOT Write in This Space - KCC USE ONLY
Date Tested: Results: Date Plugged: Date Repaired: Date Put Back in Service:
Review Completed by: Comments:
TA Approved: Yes Denied Date:

Mail to the Appropriate KCC Conservation Office:

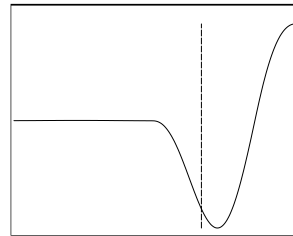
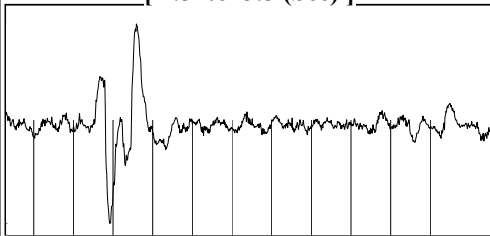
Table with 3 columns: District Office #, Address, Phone. Includes map of Kansas with numbered districts 1-4.

Group: Examples Well: SCHOMAKER C #2 (acquired on: 07/27/22 12:28:56 )



Filter Type High Pass Automatic Collar Count Yes Time 4.902 sec  
 Manual Acoustic Veloc 777.914 ft/s Manual JTS/sec 12.2699 Joints 56.6957 Jts  
 Depth 1797.25 ft

[ 2.5 to 3.5 (Sec) ]



Analysis Method: Automatic

Group: Examples Well: SCHOMAKER C #2 (acquired on: 07/27/22 12:28:56 )

NO PRESSURE DATA AVAILABLE

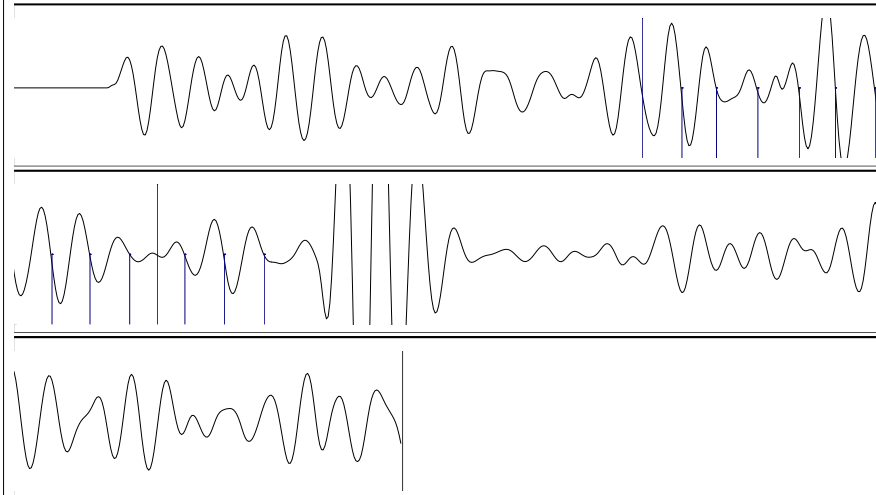
Change in Pressure 0.00 psi PT18514  
 Range 0 - ? psi  
 Change in Time 0.00 min

Group: Examples Well: SCHOMAKER C #2 (acquired on: 07/27/22 12:28:56 )

Production		Potential	Casing Pressure	Producing
Oil	- * -	- * - BBL/D	37.3 psi (g)	Annular
Water	- * -	- * - BBL/D	Casing Pressure Buildup	Gas Flow
Gas	- * -	- * - Mscf/D	- * - psi	- * - Mscf/D
			- * - min	% Liquid
IPR Method	Vogel	Gas/Liquid Interface Pressure	- * - psi (g)	100 %
PBHP/SBHP	- * -	Liquid Level Depth		
Production Efficiency	0.0	1797.25 ft	Pump Intake Depth	
			- * - ft	
Oil	40 deg.API	Formation Depth	4986.00 ft	
Water	1.05 Sp.Gr.H2O			
Gas	1.21 Sp.Gr.AIR			
Acoustic Velocity	733.274 ft/s			
Formation Submergence				
Total Gaseous Liquid Column HT (TVD)		- * - ft		
Equivalent Gas Free Liquid HT (TVD)		- * - ft		
Acoustic Test				



Group: Examples Well: SCHOMAKER C #2 (acquired on: 07/27/22 12:28:56 )



Acoustic Velocity	733.274 ft/s	Joints counted	13
Joints Per Second	11.5658 jts/sec	Joints to liquid level	56.6957
Depth to liquid level	1797.25 ft	Filter Width	10.2699 14.2699
Automatic Collar Count	Yes	Time to 1st Collar	1.456 2.58

Conservation Division  
District Office No. 1  
210 E. Frontview, Suite A  
Dodge City, KS 67801



Phone: 620-682-7933  
<http://kcc.ks.gov/>

Dwight D. Keen, Chair  
Susan K. Duffy, Commissioner  
Andrew J. French, Commissioner

Laura Kelly, Governor

August 31, 2022

Jose Reyes  
American Warrior, Inc.  
PO BOX 399  
GARDEN CITY, KS 67846-0399

Re: Temporary Abandonment  
API 15-057-20419-00-01  
SCHOMAKER 'C' #2  
SW/4 Sec.13-27S-22W  
Ford County, Kansas

Dear Jose Reyes:

"Your temporary abandonment (TA) application for the well listed above has been approved. In accordance with K.A.R. 82-3-111 the TA status of this well will expire 08/31/2023.

- \* If you return this well to service or plug it, please notify the District Office.
- \* If you sell this well you are required to file a Transfer of Operator form, T-1.
- \* If the well will remain temporarily abandoned, you must submit a new TA application, CP-111, before 08/31/2023.

You may contact me at the number above if you have questions.

Very truly yours,

Michael Maier"