

KANSAS CORPORATION COMMISSION
OIL & GAS CONSERVATION DIVISION

Form must be Typed
Form must be signed

TEMPORARY ABANDONMENT WELL APPLICATION

All blanks must be complete

OPERATOR: License#
Name:
Address 1:
Address 2:
City: State: Zip:
Contact Person:
Phone:
Contact Person Email:
Field Contact Person:
Field Contact Person Phone:

API No. 15-
Spot Description:
Sec. Twp. S. R.
GPS Location: Lat: Long:
Datum: NAD27 NAD83 WGS84
County: Elevation:
Lease Name: Well #:
Well Type: Oil Gas OG WSW Other:
SWD Permit #: ENHR Permit #:
Gas Storage Permit #:
Spud Date: Date Shut-In:

Table with 7 columns: Conductor, Surface, Production, Intermediate, Liner, Tubing. Rows include Size, Setting Depth, Amount of Cement, Top of Cement, Bottom of Cement.

Casing Fluid Level from Surface: How Determined? Date:
Casing Squeeze(s): to w / sacks of cement, to w / sacks of cement. Date:
Do you have a valid Oil & Gas Lease? Yes No
Depth and Type: Junk in Hole at Tools in Hole at Casing Leaks: Yes No Depth of casing leak(s):
Type Completion: ALT. I ALT. II Depth of: DV Tool: w / sacks of cement Port Collar: w / sack of cement
Packer Type: Size: Inch Set at: Feet
Total Depth: Plug Back Depth: Plug Back Method:

Geological Data:

Table with 4 columns: Formation Name, Formation Top, Formation Base, Completion Information. Rows 1 and 2.

UNDER PENALTY OF PERJURY I HEREBY ATTEST THAT THE INFORMATION CONTAINED HEREIN IS TRUE AND CORRECT TO THE BEST OF MY KNOWLEDGE

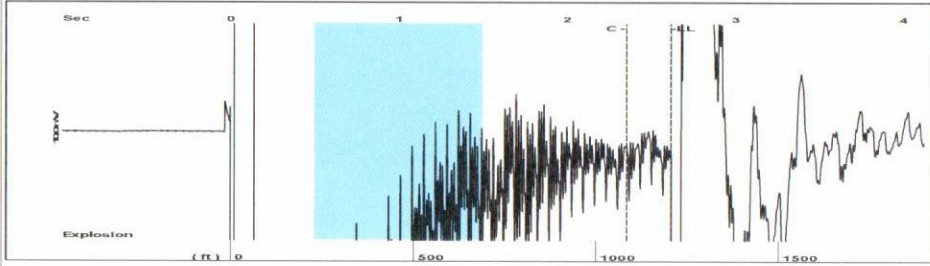
Submitted Electronically

Do NOT Write in This Space - KCC USE ONLY
Date Tested: Results: Date Plugged: Date Repaired: Date Put Back in Service:
Review Completed by: Comments:
TA Approved: Yes Denied Date:

Mail to the Appropriate KCC Conservation Office:

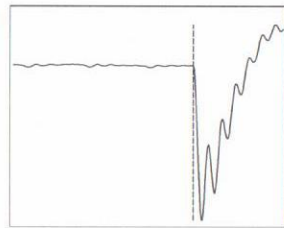
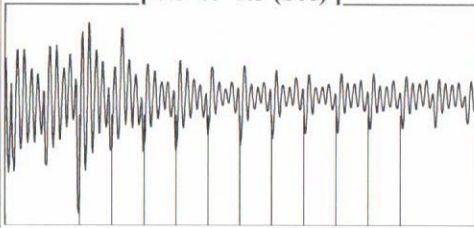
Table with 2 columns: Office Address, Phone. Rows for District Office #1, #2, #3, #4.

Group: MyWells Well: Fair Sleeper 1 OWWO (acquired on: 08/25/22 14:04:26)



Filter Type High Pass Automatic Collar Count Yes Time 2.619 sec
 Manual Acoustic Velo 926.901 ft/s Manual JTS/sec 14.6199 Joints 38.0353 Jts
 Depth 1205.72 ft

[0.5 to 1.5 (Sec)]



Analysis Method: Automatic

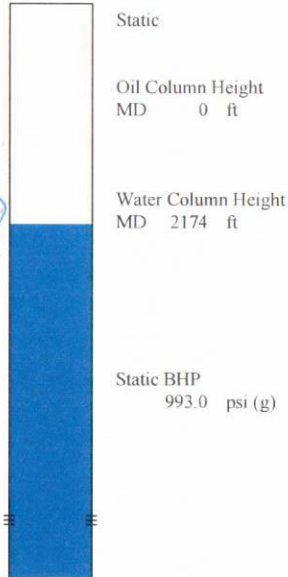
Group: MyWells Well: Fair Sleeper 1 OWWO (acquired on: 08/25/22 14:04:26)

NO PRESSURE DATA AVAILABLE

Change in Pressure 0.00 psi PT18948
 Change in Time 0.00 min Range 0 - ? psi

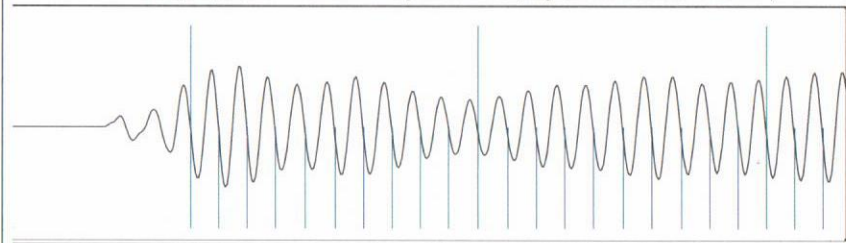
Group: MyWells Well: Fair Sleeper 1 OWWO (acquired on: 08/25/22 14:04:26)

Production	Potential	Casing Pressure
Current	- * - BBL/D	3.7 psi (g)
Oil - * -	- * - BBL/D	Casing Pressure Buildup
Water - * -	- * - Mscf/D	-0.0 psi
Gas - * -		0.50 min
IPR Method	Vogel	Gas/Liquid Interface Pressure
PBHP/SBHP	- * -	4.5 psi (g)
Production Efficiency	0.0	Liquid Level Depth
		1205.72 ft **
Oil 40 deg API		Pump Intake Depth
Water 1.05 Sp.Gr.H2O		- * - ft
Gas 1.04 Sp.Gr.AIR		Formation Depth
		3380.00 ft
Acoustic Velocity	920.747 ft/s	



Acoustic Test

Group: MyWells Well: Fair Sleeper 1 OWWO (acquired on: 08/25/22 14:04:26)



Acoustic Velocity	920.747 ft/s	Joints counted	28
Joints Per Second	14.5228 jts/sec	Joints to liquid level	38.0353
Depth to liquid level	1205.72 ft	Filter Width	12.6199 16.6199
Automatic Collar Count	Yes	Time to 1st Collar	0.428 2.356

Conservation Division
District Office No. 1
210 E. Frontview, Suite A
Dodge City, KS 67801



Phone: 620-682-7933
<http://kcc.ks.gov/>

Dwight D. Keen, Chair
Susan K. Duffy, Commissioner
Andrew J. French, Commissioner

Laura Kelly, Governor

September 01, 2022

DALE R. OHL
Smith, Richard E. dba Smith Oil Operations
410 N. ADAMS
PO BOX 550
HUTCHINSON, KS 67504-0550

Re: Temporary Abandonment
API 15-185-30193-00-01
FAIR SLEEPER TRUST 1 OWWO
NW/4 Sec.15-21S-11W
Stafford County, Kansas

Dear DALE R. OHL:

"Your temporary abandonment (TA) application for the well listed above has been approved. In accordance with K.A.R. 82-3-111 the TA status of this well will expire 09/01/2023.

- * If you return this well to service or plug it, please notify the District Office.
- * If you sell this well you are required to file a Transfer of Operator form, T-1.
- * If the well will remain temporarily abandoned, you must submit a new TA application, CP-111, before 09/01/2023.

You may contact me at the number above if you have questions.

Very truly yours,

Michael Maier"