

KANSAS CORPORATION COMMISSION
OIL & GAS CONSERVATION DIVISION

Form must be Typed
Form must be signed

TEMPORARY ABANDONMENT WELL APPLICATION

All blanks must be complete

OPERATOR: License#
Name:
Address 1:
Address 2:
City: State: Zip:
Contact Person:
Phone:
Contact Person Email:
Field Contact Person:
Field Contact Person Phone:

API No. 15-
Spot Description:
Sec. Twp. S. R.
GPS Location: Lat: Long:
Datum: NAD27 NAD83 WGS84
County: Elevation:
Lease Name: Well #:
Well Type: Oil Gas OG WSW Other:
SWD Permit #: ENHR Permit #:
Gas Storage Permit #:
Spud Date: Date Shut-In:

Table with 7 columns: Conductor, Surface, Production, Intermediate, Liner, Tubing. Rows include Size, Setting Depth, Amount of Cement, Top of Cement, Bottom of Cement.

Casing Fluid Level from Surface: How Determined? Date:
Casing Squeeze(s): to w / sacks of cement, to w / sacks of cement. Date:
Do you have a valid Oil & Gas Lease? Yes No
Depth and Type: Junk in Hole at Tools in Hole at Casing Leaks: Yes No Depth of casing leak(s):
Type Completion: ALT. I ALT. II Depth of: DV Tool: w / sacks of cement Port Collar: w / sack of cement
Packer Type: Size: Inch Set at: Feet
Total Depth: Plug Back Depth: Plug Back Method:

Geological Data:

Table with 4 columns: Formation Name, Formation Top, Formation Base, Completion Information. Rows 1 and 2.

UNDER PENALTY OF PERJURY I HEREBY ATTEST THAT THE INFORMATION CONTAINED HEREIN IS TRUE AND CORRECT TO THE BEST OF MY KNOWLEDGE

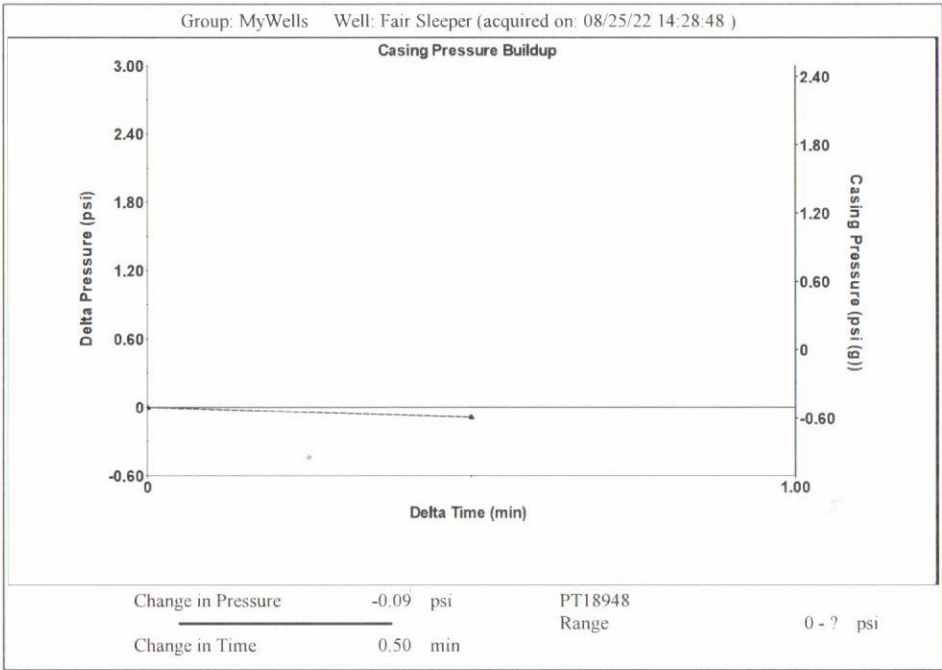
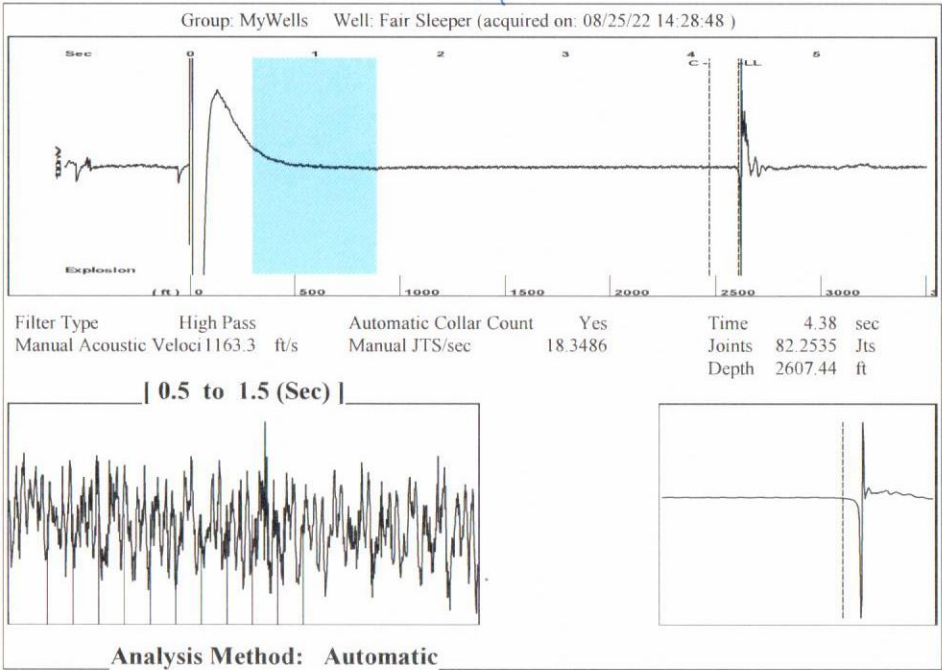
Submitted Electronically

Do NOT Write in This Space - KCC USE ONLY
Date Tested: Results: Date Plugged: Date Repaired: Date Put Back in Service:
Review Completed by: Comments:
TA Approved: Yes Denied Date:

Mail to the Appropriate KCC Conservation Office:

Table with 3 columns: Office Name, Address, Phone. Rows for District Office #1, #2, #3, #4.

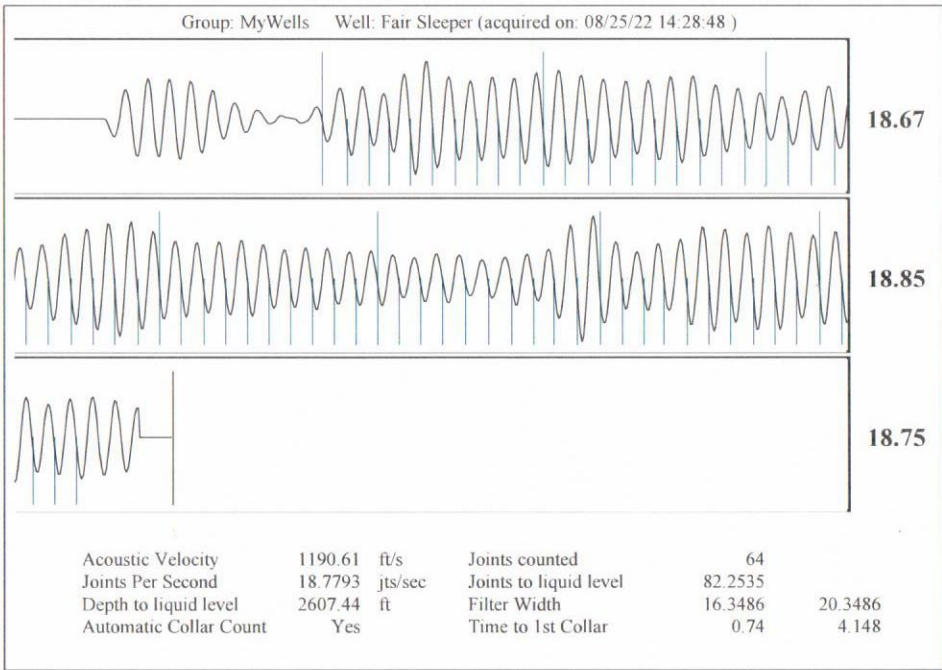
#11



Group: MyWells Well: Fair Sleeper (acquired on: 08/25/22 14:28:48)

Production Current	Potential	Casing Pressure	Static
Oil - * -	- * - BBL/D	-0.5 psi (g)	Oil Column Height MD 0 ft
Water - * -	- * - BBL/D	Casing Pressure Buildup -0.1 psi	Water Column Height MD 393 ft
Gas - * -	- * - Mscf/D	0.50 min	Static BHP 179.0 psi (g)
IPR Method	Vogel	Gas/Liquid Interface Pressure 0.5 psi (g)	
PBHP/SBHP	- * -	Liquid Level Depth 2607.44 ft **	
Production Efficiency	0.0	Pump Intake Depth - * - ft	
Oil 40 deg.API		Formation Depth 3000.00 ft	
Water 1.05 Sp.Gr.H2O			
Gas 0.81 Sp.Gr.AIR			
Acoustic Velocity 1190.61 ft/s			

Acoustic Test



September 01, 2022

DALE R. OHL
Smith, Richard E. dba Smith Oil Operations
410 N. ADAMS
PO BOX 550
HUTCHINSON, KS 67504-0550

Re: Temporary Abandonment
API 15-185-23913-00-00
FAIR SLEEPER TRUST 4
NW/4 Sec.15-21S-11W
Stafford County, Kansas

Dear DALE R. OHL:

"Your temporary abandonment (TA) application for the well listed above has been approved. In accordance with K.A.R. 82-3-111 the TA status of this well will expire 09/01/2023.

- * If you return this well to service or plug it, please notify the District Office.
- * If you sell this well you are required to file a Transfer of Operator form, T-1.
- * If the well will remain temporarily abandoned, you must submit a new TA application, CP-111, before 09/01/2023.

You may contact me at the number above if you have questions.

Very truly yours,

Michael Maier"