

KANSAS CORPORATION COMMISSION
OIL & GAS CONSERVATION DIVISION

TEMPORARY ABANDONMENT WELL APPLICATION

OPERATOR: License#
Name:
Address 1:
Address 2:
City: State: Zip:
Contact Person:
Phone:
Contact Person Email:
Field Contact Person:
Field Contact Person Phone:

API No. 15-
Spot Description:
Sec. Twp. S. R.
GPS Location: Lat: Long:
Datum: NAD27 NAD83 WGS84
County: Elevation:
Lease Name: Well #:
Well Type: Oil Gas OG WSW Other:
SWD Permit #: ENHR Permit #:
Gas Storage Permit #:
Spud Date: Date Shut-In:

Table with 7 columns: Conductor, Surface, Production, Intermediate, Liner, Tubing. Rows include Size, Setting Depth, Amount of Cement, Top of Cement, Bottom of Cement.

Casing Fluid Level from Surface: How Determined? Date:
Casing Squeeze(s): to w / sacks of cement, to w / sacks of cement. Date:
Do you have a valid Oil & Gas Lease? Yes No
Depth and Type: Junk in Hole at Tools in Hole at Casing Leaks: Yes No Depth of casing leak(s):
Type Completion: ALT. I ALT. II Depth of: DV Tool: w / sacks of cement Port Collar: w / sack of cement
Packer Type: Size: Inch Set at: Feet
Total Depth: Plug Back Depth: Plug Back Method:

Geological Data:

Table with 4 columns: Formation Name, Formation Top, Formation Base, Completion Information. Rows 1 and 2.

UNDER PENALTY OF PERJURY I HEREBY ATTEST THAT THE INFORMATION CONTAINED HEREIN IS TRUE AND CORRECT TO THE BEST OF MY KNOWLEDGE

Submitted Electronically

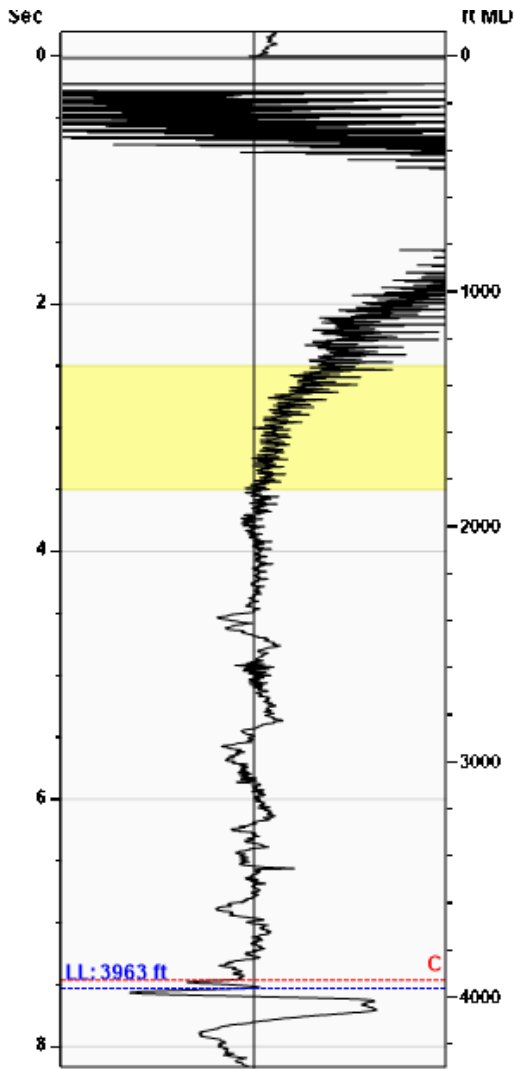
Do NOT Write in This Space - KCC USE ONLY
Date Tested: Results: Date Plugged: Date Repaired: Date Put Back in Service:
Review Completed by: Comments:
TA Approved: Yes Denied Date:

Mail to the Appropriate KCC Conservation Office:

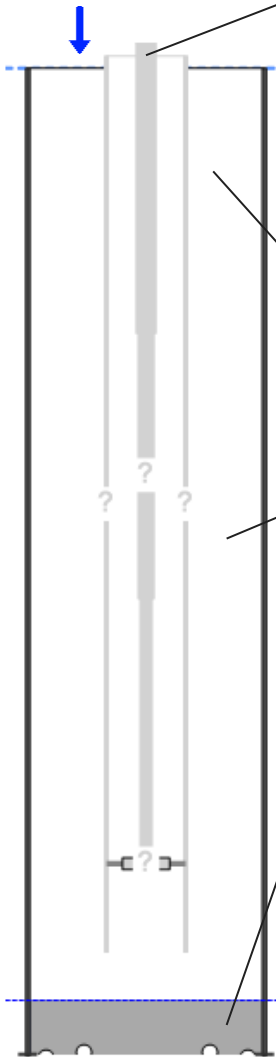
Table with 3 columns: District Office, Address, Phone. Rows for District Office #1, #2, #3, #4.

**Liquid Level** **3963 ft MD**

**Fluid Above Pump** **237 ft TVD**  
**Equivalent Gas Free Above Pump** **196 ft TVD**



Gun - CG 6540



**Production**

Date Entered	09/06/22		
	Current	Potential	
Oil	**	**	BBL/D
Water	**	**	BBL/D
Gas	**	**	Mscf/D
IPR Method	Vogel		
PBHP/SBHP	-0.00		
Producing Efficiency	0.00%		

**Casing Pressure**

Pressure 9.1 psi (g)

**Annular Gas Flow**

Gas Flow 3.8 Mscf/D

**Fluid Properties**

% Liquid Above Pump 83.01%  
 % Liquid Below Pump \*\*

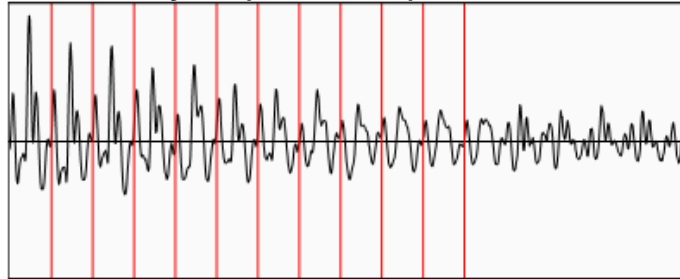
**Depths**

Pump Intake Depth 0 ft  
 Formation Depth 4200 ft

**Wellbore Pressures**

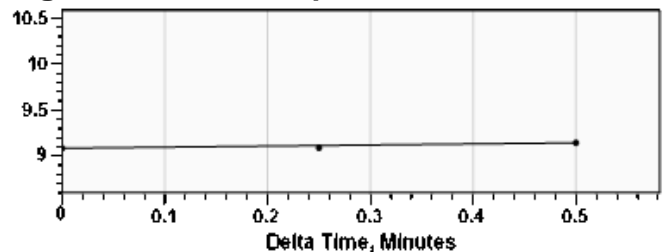
PIP \*\*  
 PBHP 79.4 psi (g)  
 SBHP \*\*  
 Gas/Liq Interface 12.2 psi (g)

**Collar Analysis (Automatic)**



Average Acoustic Velocity 1053 ft/s  
 Average Joints Per Sec. 16.61 Jts/sec  
 Joints To Liquid 125.03 Jts

**Casing Pressure Buildup**



Casing Pressure 9.1 psi (g)  
 Buildup 0.1 psi (g)  
 Buildup Time 30 sec  
 Gas Gravity from Collar Analysis (Automatic) 0.9358 Air = 1

**Comments and Recommendations**

shot 1

September 08, 2022

Tom Garner  
Thomas Garner, Inc.  
305 E 7th Ave  
ST JOHN, KS 67576-8318

Re: Temporary Abandonment  
API 15-185-21071-00-00  
HARRISON L 1  
SE/4 Sec.26-25S-13W  
Stafford County, Kansas

Dear Tom Garner:

"Your temporary abandonment (TA) application for the well listed above has been approved. In accordance with K.A.R. 82-3-111 the TA status of this well will expire 09/08/2023.

- \* If you return this well to service or plug it, please notify the District Office.
- \* If you sell this well you are required to file a Transfer of Operator form, T-1.
- \* If the well will remain temporarily abandoned, you must submit a new TA application, CP-111, before 09/08/2023.

You may contact me at the number above if you have questions.

Very truly yours,

Michael Maier"