

KANSAS CORPORATION COMMISSION
OIL & GAS CONSERVATION DIVISION

TEMPORARY ABANDONMENT WELL APPLICATION

OPERATOR: License#
Name:
Address 1:
Address 2:
City: State: Zip:
Contact Person:
Phone:
Contact Person Email:
Field Contact Person:
Field Contact Person Phone:

API No. 15-
Spot Description:
Sec. Twp. S. R.
GPS Location: Lat: Long:
Datum: NAD27 NAD83 WGS84
County: Elevation:
Lease Name: Well #:
Well Type: Oil Gas OG WSW Other:
SWD Permit #: ENHR Permit #:
Gas Storage Permit #:
Spud Date: Date Shut-In:

Table with 7 columns: Conductor, Surface, Production, Intermediate, Liner, Tubing. Rows include Size, Setting Depth, Amount of Cement, Top of Cement, Bottom of Cement.

Casing Fluid Level from Surface: How Determined? Date:
Casing Squeeze(s): to w / sacks of cement, to w / sacks of cement. Date:
Do you have a valid Oil & Gas Lease? Yes No
Depth and Type: Junk in Hole at Tools in Hole at Casing Leaks: Yes No Depth of casing leak(s):
Type Completion: ALT. I ALT. II Depth of: DV Tool: w / sacks of cement Port Collar: w / sack of cement
Packer Type: Size: Inch Set at: Feet
Total Depth: Plug Back Depth: Plug Back Method:

Geological Data:

Table with 4 columns: Formation Name, Formation Top, Formation Base, Completion Information. Rows 1 and 2.

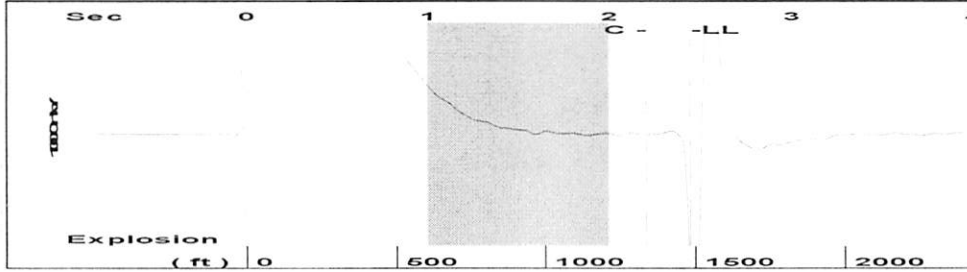
UNDER PENALTY OF PERJURY I HEREBY ATTEST THAT THE INFORMATION CONTAINED HEREIN IS TRUE AND CORRECT TO THE BEST OF MY KNOWLEDGE

Submitted Electronically

Do NOT Write in This Space - KCC USE ONLY
Date Tested: Results: Date Plugged: Date Repaired: Date Put Back in Service:
Review Completed by: Comments:
TA Approved: Yes Denied Date:

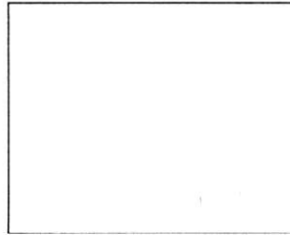
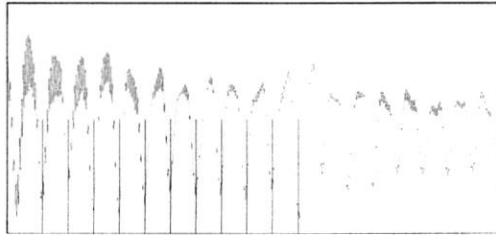
Mail to the Appropriate KCC Conservation Office:

Table with 3 columns: District Office #, Address, Phone. Rows 1-4.

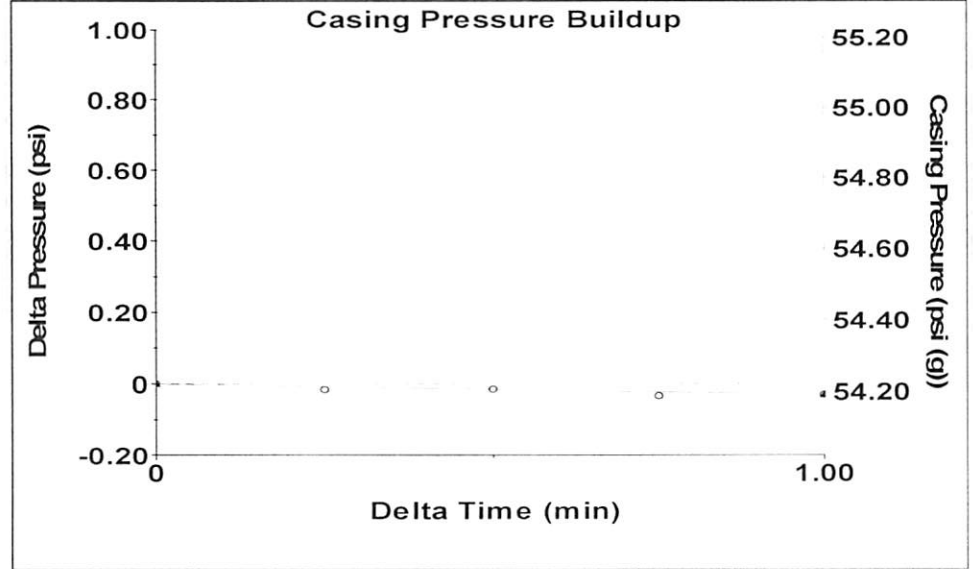


Filter Type High Pass Automatic Collar Count Yes Time 2.444 sec  
 Manual Acoustic Velo 1214.56 ft/s Manual JTS/sec 19.1571 Joints 46.8054 Jts  
 Depth 1483.73 ft

[ 1.0 to 2.0 (Sec) ]



Analysis Method: Automatic



Change in Pressure -0.03 psi PT15469  
 Range 0 - 2 psi  
 Change in Time 1.00 min

Production  
 Current Potential  
 Oil - \* - BBL/D  
 Water - \* - BBL/D  
 Gas - \* - Mscf/D

IPR Method Vogel  
 PBHP/SBHP - \* -  
 Production Efficiency 0.0

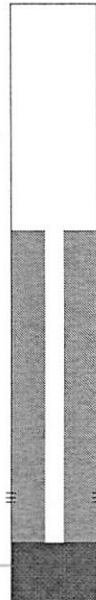
Oil 40 deg.API  
 Water 1.05 Sp.Gr.H2O  
 Gas 0.76 Sp.Gr.AIR

Acoustic Velocity 1214.18 ft/s

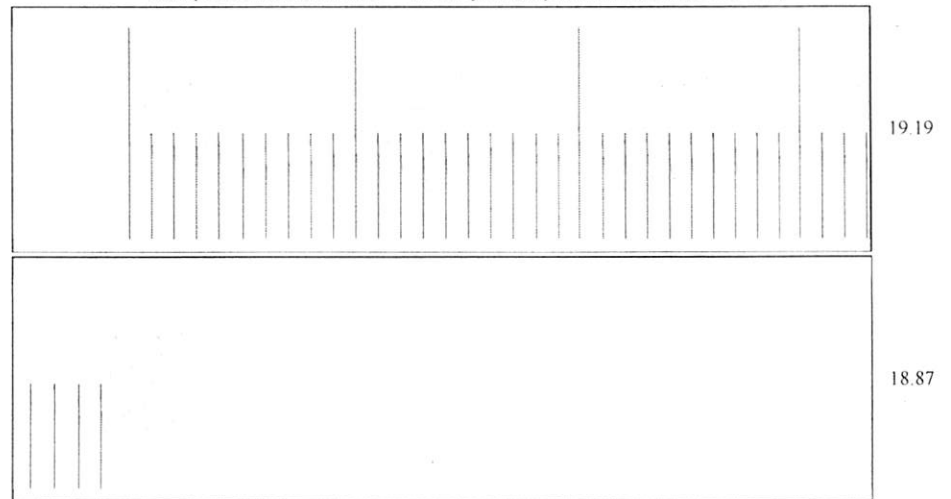
Formation Submergence  
 Total Gaseous Liquid Column HT (TVD) 2781 ft  
 Equivalent Gas Free Liquid HT (TVD) 2781 ft

Acoustic Test

Casing Pressure 54.2 psi (g)  
 Casing Pressure Buildup -0.0 psi  
 1.00 min  
 Gas/Liquid Interface Pressure 57.0 psi (g)  
 Liquid Level Depth 1483.73 ft  
 Tubing Intake Depth 4265.00 ft  
 Formation Depth 3859.00 ft



Producing  
 Casing % Liquid 100 %  
 Tubing Intake 1027.3 psi (g)  
 Producing BHP 842.7 psi (g)  
 Static BHP - \* - psi (g)



Acoustic Velocity 1214.18 ft/s Joints counted 37  
 Joints Per Second 19.1511 jts/sec Joints to liquid level 46.8054  
 Depth to liquid level 1483.73 ft Filter Width 17.1571 21.1571  
 Automatic Collar Count Yes Time to 1st Collar 0.272 2.204

Conservation Division  
District Office No. 1  
210 E. Frontview, Suite A  
Dodge City, KS 67801



Phone: 620-682-7933  
<http://kcc.ks.gov/>

Dwight D. Keen, Chair  
Susan K. Duffy, Commissioner  
Andrew J. French, Commissioner

Laura Kelly, Governor

September 08, 2022

Kenneth C Gates  
3G Production, LLC  
10387 NE SR 61  
PO BOX 847  
PRATT, KS 67124-0847

Re: Temporary Abandonment  
API 15-151-20856-00-00  
DYCHE 1  
SW/4 Sec.32-27S-13W  
Pratt County, Kansas

Dear Kenneth C Gates:

"Your temporary abandonment (TA) application for the well listed above has been approved. In accordance with K.A.R. 82-3-111 the TA status of this well will expire 09/08/2023.

- \* If you return this well to service or plug it, please notify the District Office.
- \* If you sell this well you are required to file a Transfer of Operator form, T-1.
- \* If the well will remain temporarily abandoned, you must submit a new TA application, CP-111, before 09/08/2023.

You may contact me at the number above if you have questions.

Very truly yours,

Michael Maier"