

KANSAS CORPORATION COMMISSION
OIL & GAS CONSERVATION DIVISION

TEMPORARY ABANDONMENT WELL APPLICATION

OPERATOR: License#
Name:
Address 1:
Address 2:
City: State: Zip:
Contact Person:
Phone:
Contact Person Email:
Field Contact Person:
Field Contact Person Phone:

API No. 15-
Spot Description:
Sec. Twp. S. R.
GPS Location: Lat: Long:
Datum: NAD27 NAD83 WGS84
County: Elevation:
Lease Name: Well #:
Well Type: Oil Gas OG WSW Other:
SWD Permit #: ENHR Permit #:
Gas Storage Permit #:
Spud Date: Date Shut-In:

Table with 7 columns: Conductor, Surface, Production, Intermediate, Liner, Tubing. Rows include Size, Setting Depth, Amount of Cement, Top of Cement, Bottom of Cement.

Casing Fluid Level from Surface: How Determined? Date:
Casing Squeeze(s): to w / sacks of cement, to w / sacks of cement. Date:
Do you have a valid Oil & Gas Lease? Yes No
Depth and Type: Junk in Hole at Tools in Hole at Casing Leaks: Yes No Depth of casing leak(s):
Type Completion: ALT. I ALT. II Depth of: DV Tool: w / sacks of cement Port Collar: w / sack of cement
Packer Type: Size: Inch Set at: Feet
Total Depth: Plug Back Depth: Plug Back Method:

Geological Date:

Table with 4 columns: Formation Name, Formation Top, Formation Base, Completion Information. Rows 1 and 2.

UNDER PENALTY OF PERJURY I HEREBY ATTEST THAT THE INFORMATION CONTAINED HEREIN IS TRUE AND CORRECT TO THE BEST OF MY KNOWLEDGE

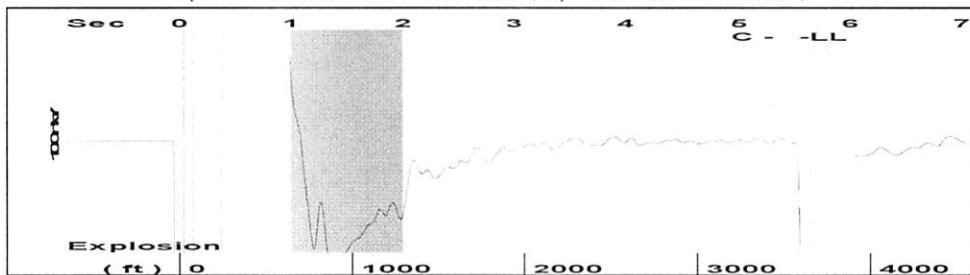
Submitted Electronically

Do NOT Write in This Space - KCC USE ONLY
Date Tested: Results: Date Plugged: Date Repaired: Date Put Back in Service:
Review Completed by: Comments:
TA Approved: Yes Denied Date:

Mail to the Appropriate KCC Conservation Office:

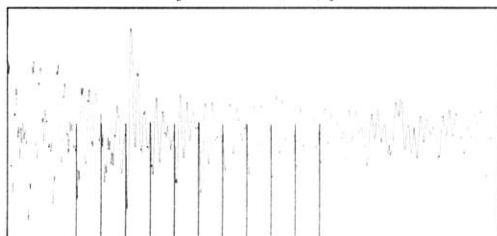
Table with 3 columns: District Office, Address, Phone. Rows for District Office #1, #2, #3, #4.

Group: 3G Production, LLC Well: Newsom (acquired on: 08/31/22 11:39:59)



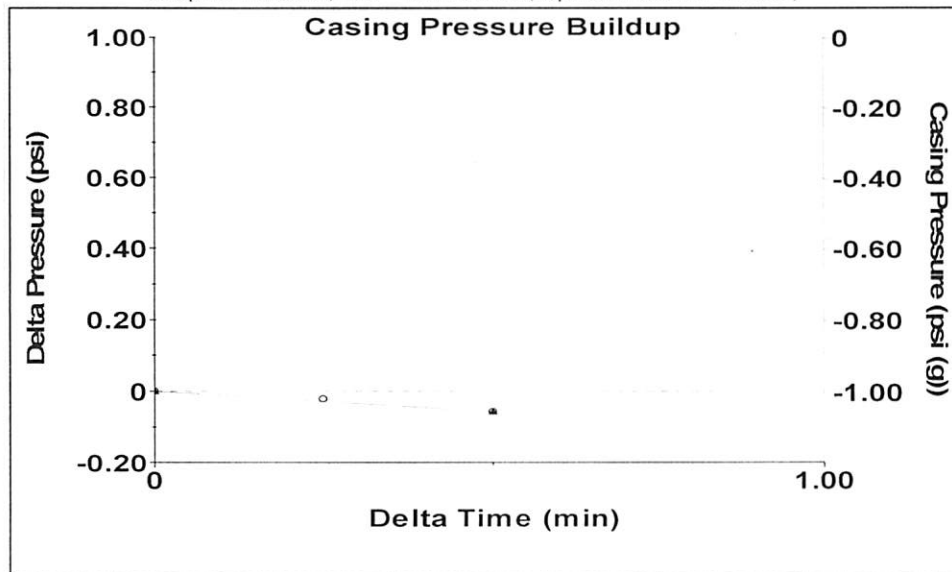
Filter Type High Pass Automatic Collar Count Yes Time 5.539 sec
 Manual Acoustic Veloc 1283.4 ft/s Manual JTS/sec 20.2429 Joints 113.198 Jts
 Depth 3588.37 ft

[1.0 to 2.0 (Sec)]



Analysis Method: Automatic

Group: 3G Production, LLC Well: Newsom (acquired on: 08/31/22 11:39:59)



Change in Pressure -0.06 psi PT15469
 Change in Time 0.50 min Range 0 - ? psi

Group: 3G Production, LLC Well: Newsom (acquired on: 08/31/22 11:39:59)

Production
 Current Potential
 Oil -*- -*- BBL/D
 Water -*- -*- BBL/D
 Gas -*- -*- Mscf/D
 IPR Method Vogel
 PBHP/SBHP -*-
 Production Efficiency 0.0

Oil 40 deg API
 Water 1.05 Sp.Gr.H2O
 Gas 0.71 Sp.Gr.AIR

Acoustic Velocity 1295.67 ft/s

Formation Submergence
 Total Gaseous Liquid Column HT (TVD) 980 ft
 Equivalent Gas Free Liquid HT (TVD) 980 ft

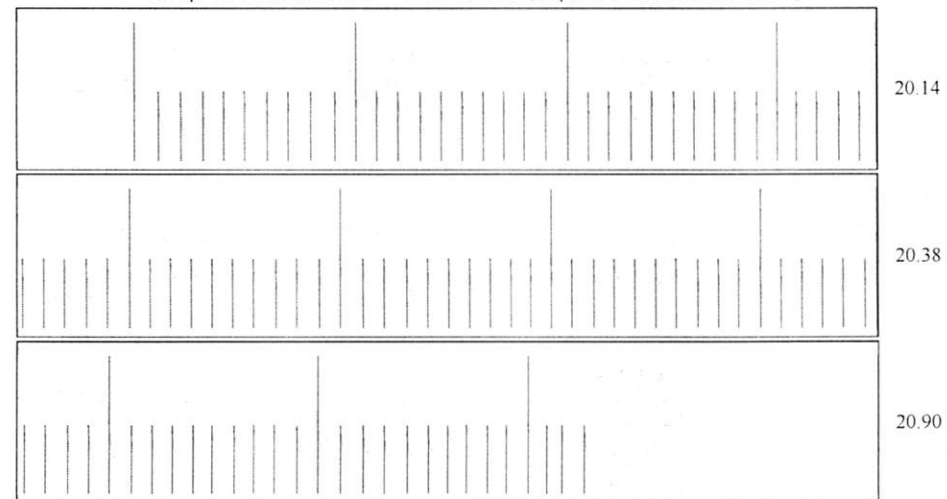
Acoustic Test

Casing Pressure -1.0 psi (g)
 Casing Pressure Buildup -0.1 psi
 0.50 min
 Gas/Liquid Interface Pressure 0.2 psi (g)
 Liquid Level Depth 3588.37 ft
 Tubing Intake Depth 4568.00 ft
 Formation Depth 4550.00 ft



Producing
 Casing % Liquid 100 %
 Tubing Intake 332.0 psi (g)
 Producing BHP 323.8 psi (g)
 Static BHP - *- psi (g)

Group: 3G Production, LLC Well: Newsom (acquired on: 08/31/22 11:39:59)



Acoustic Velocity 1295.67 ft/s Joints counted 103
 Joints Per Second 20.4365 jts/sec Joints to liquid level 113.198
 Depth to liquid level 3588.37 ft Filter Width 18.2429 22.2429
 Automatic Collar Count Yes Time to 1st Collar 0.272 5.312

Conservation Division
District Office No. 1
210 E. Frontview, Suite A
Dodge City, KS 67801



Phone: 620-682-7933
<http://kcc.ks.gov/>

Dwight D. Keen, Chair
Susan K. Duffy, Commissioner
Andrew J. French, Commissioner

Laura Kelly, Governor

September 08, 2022

Kenneth C Gates
3G Production, LLC
10387 NE SR 61
PO BOX 847
PRATT, KS 67124-0847

Re: Temporary Abandonment
API 15-047-00227-00-01
NEWSOM 1
SE/4 Sec.01-26S-18W
Edwards County, Kansas

Dear Kenneth C Gates:

"Your temporary abandonment (TA) application for the well listed above has been approved. In accordance with K.A.R. 82-3-111 the TA status of this well will expire 09/08/2023.

- * If you return this well to service or plug it, please notify the District Office.
- * If you sell this well you are required to file a Transfer of Operator form, T-1.
- * If the well will remain temporarily abandoned, you must submit a new TA application, CP-111, before 09/08/2023.

You may contact me at the number above if you have questions.

Very truly yours,

Michael Maier"