

KANSAS CORPORATION COMMISSION
OIL & GAS CONSERVATION DIVISION

TEMPORARY ABANDONMENT WELL APPLICATION

OPERATOR: License# \_\_\_\_\_
Name: \_\_\_\_\_
Address 1: \_\_\_\_\_
Address 2: \_\_\_\_\_
City: \_\_\_\_\_ State: \_\_\_\_\_ Zip: \_\_\_\_\_ + \_\_\_\_\_
Contact Person: \_\_\_\_\_
Phone:( \_\_\_\_\_ ) \_\_\_\_\_
Contact Person Email: \_\_\_\_\_
Field Contact Person: \_\_\_\_\_
Field Contact Person Phone: ( \_\_\_\_\_ ) \_\_\_\_\_

API No. 15- \_\_\_\_\_
Spot Description: \_\_\_\_\_
Sec. \_\_\_\_\_ Twp. \_\_\_\_\_ S. R. \_\_\_\_\_ E \_\_\_\_\_ W \_\_\_\_\_
feet from \_\_\_\_\_ N / \_\_\_\_\_ S Line of Section \_\_\_\_\_
feet from \_\_\_\_\_ E / \_\_\_\_\_ W Line of Section \_\_\_\_\_
GPS Location: Lat: \_\_\_\_\_, Long: \_\_\_\_\_
Datum: \_\_\_\_\_ NAD27 \_\_\_\_\_ NAD83 \_\_\_\_\_ WGS84
County: \_\_\_\_\_ Elevation: \_\_\_\_\_ GL \_\_\_\_\_ KB
Lease Name: \_\_\_\_\_ Well #: \_\_\_\_\_
Well Type: (check one) \_\_\_\_\_ Oil \_\_\_\_\_ Gas \_\_\_\_\_ OG \_\_\_\_\_ WSW \_\_\_\_\_ Other: \_\_\_\_\_
\_\_\_\_\_ SWD Permit #: \_\_\_\_\_ ENHR Permit #: \_\_\_\_\_
\_\_\_\_\_ Gas Storage Permit #: \_\_\_\_\_
Spud Date: \_\_\_\_\_ Date Shut-In: \_\_\_\_\_

Table with 7 columns: Conductor, Surface, Production, Intermediate, Liner, Tubing. Rows include Size, Setting Depth, Amount of Cement, Top of Cement, Bottom of Cement.

Casing Fluid Level from Surface: \_\_\_\_\_ How Determined? \_\_\_\_\_ Date: \_\_\_\_\_
Casing Squeeze(s): \_\_\_\_\_ to \_\_\_\_\_ w / \_\_\_\_\_ sacks of cement, \_\_\_\_\_ to \_\_\_\_\_ w / \_\_\_\_\_ sacks of cement. Date: \_\_\_\_\_
Do you have a valid Oil & Gas Lease? \_\_\_\_\_ Yes \_\_\_\_\_ No
Depth and Type: \_\_\_\_\_ Junk in Hole at \_\_\_\_\_ Tools in Hole at \_\_\_\_\_ Casing Leaks: \_\_\_\_\_ Yes \_\_\_\_\_ No Depth of casing leak(s): \_\_\_\_\_
Type Completion: \_\_\_\_\_ ALT. I \_\_\_\_\_ ALT. II Depth of: \_\_\_\_\_ DV Tool: \_\_\_\_\_ w / \_\_\_\_\_ sacks of cement \_\_\_\_\_ Port Collar: \_\_\_\_\_ w / \_\_\_\_\_ sack of cement
Packer Type: \_\_\_\_\_ Size: \_\_\_\_\_ Inch Set at: \_\_\_\_\_ Feet
Total Depth: \_\_\_\_\_ Plug Back Depth: \_\_\_\_\_ Plug Back Method: \_\_\_\_\_

Geological Date:

Table with 4 columns: Formation Name, Formation Top, Formation Base, Completion Information. Rows 1 and 2.

UNDER PENALTY OF PERJURY I HEREBY ATTEST THAT THE INFORMATION CONTAINED HEREIN IS TRUE AND CORRECT TO THE BEST OF MY KNOWLEDGE

Submitted Electronically

Do NOT Write in This Space - KCC USE ONLY
Date Tested: \_\_\_\_\_ Results: \_\_\_\_\_ Date Plugged: \_\_\_\_\_ Date Repaired: \_\_\_\_\_ Date Put Back in Service: \_\_\_\_\_
Review Completed by: \_\_\_\_\_ Comments: \_\_\_\_\_
TA Approved: \_\_\_\_\_ Yes \_\_\_\_\_ Denied Date: \_\_\_\_\_

Mail to the Appropriate KCC Conservation Office:

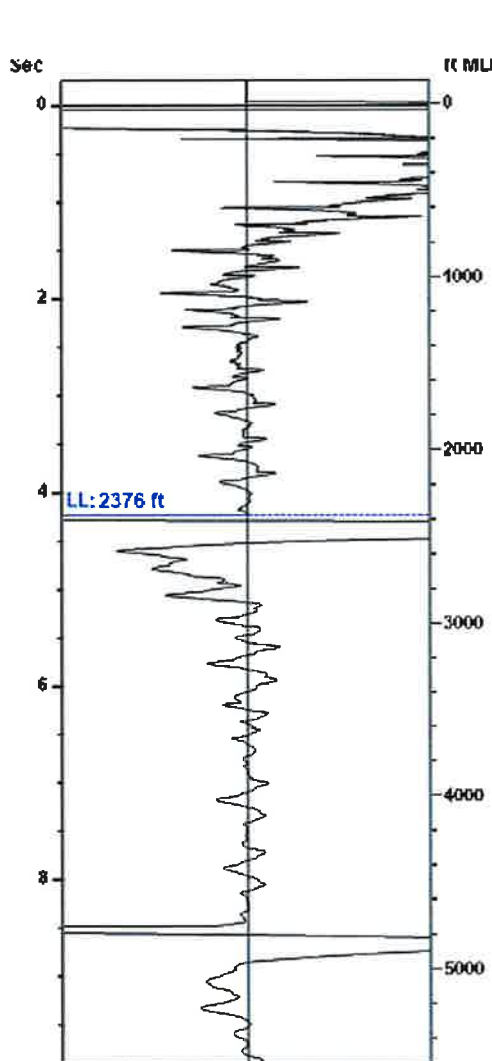
Table with 3 columns: District Office, Address, Phone. Rows for District Office #1, #2, #3, #4.

Liquid Level

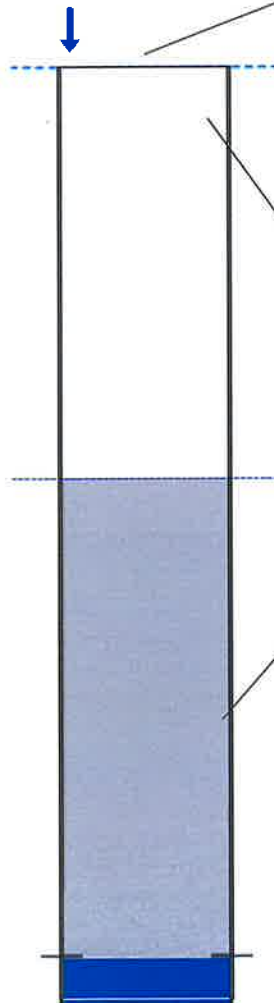
2376 ft MD

Fluid Above Tubing  
Gas Free Above Tubing

2773 ft TVD  
2773 ft TVD



Gun - WRFG 923



**Production**

Date Entered	09/08/22		
	Current	Potential	
Oil	**	**	BBL/D
Water	**	**	BBL/D
Gas	**	**	Mscf/D
IPR Method	Vogel		
PBHP/SBHP	-0.00		
Producing Efficiency	0.00%		

**Casing Pressure**

Pressure	0.5 psi (g)
----------	-------------

**Annular Gas Flow**

Gas Flow	** Mscf/D
----------	-----------

**Fluid Properties**

% Liquid Above Tubing	100.00%
% Liquid Below Tubing	**

**Depths**

Tubing Depth	0 ft
Formation Depth	5149 ft

**Wellbore Pressures**

TIP	**
PBHP	914.5 psi (g)
SBHP	**
Gas/Liq Interface	1.7 psi (g)

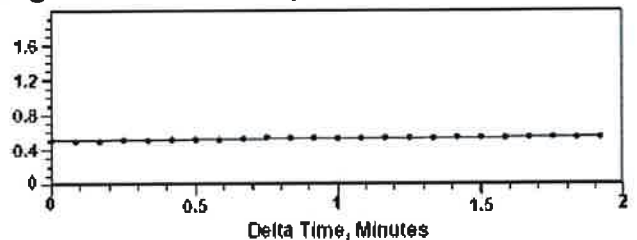
**Acoustic Velocity**

Surface Temp	70 deg F	0.00% CO2
Bottomhole Temp	150 deg F	0.00% N2
Pressure	0.5 psi (g)	0.00% H2S
Gas Gravity	0.9220 Air = 1	

Acoustic Velocity	1118 ft/s
Joints Per Sec.	17.63 Jts/sec
Joints To Liquid	74.96 Jts

Calculated From Known Gas Specific Gravity

**Casing Pressure Buildup**



Casing Pressure	0.5 psi (g)
Buildup	0.0 psi (g)
Buildup Time	1 min 55 sec
Gas Gravity from Acoustic Velocity	0.9220 Air = 1

**Comments and Recommendations**

Echometer Company  
5001 Ditto Lane  
Wichita Falls, TX 76302  
(940) 767-4334  
info@echometer.com

Conservation Division  
District Office No. 1  
210 E. Frontview, Suite A  
Dodge City, KS 67801



Phone: 620-682-7933  
<http://kcc.ks.gov/>

Dwight D. Keen, Chair  
Susan K. Duffy, Commissioner  
Andrew J. French, Commissioner

Laura Kelly, Governor

September 13, 2022

M.L. Korphage  
Vincent Oil Corporation  
200 W DOUGLAS AVE #725  
WICHITA, KS 67202-3023

Re: Temporary Abandonment  
API 15-057-20778-00-00  
ZIMMERMAN 1-8  
NW/4 Sec.08-28S-23W  
Ford County, Kansas

Dear M.L. Korphage:

"Your temporary abandonment (TA) application for the well listed above has been approved. In accordance with K.A.R. 82-3-111 the TA status of this well will expire 09/13/2023.

- \* If you return this well to service or plug it, please notify the District Office.
- \* If you sell this well you are required to file a Transfer of Operator form, T-1.
- \* If the well will remain temporarily abandoned, you must submit a new TA application, CP-111, before 09/13/2023.

You may contact me at the number above if you have questions.

Very truly yours,

Michael Maier"