

KANSAS CORPORATION COMMISSION
OIL & GAS CONSERVATION DIVISION

TEMPORARY ABANDONMENT WELL APPLICATION

OPERATOR: License#
Name:
Address 1:
Address 2:
City: State: Zip:
Contact Person:
Phone:
Contact Person Email:
Field Contact Person:
Field Contact Person Phone:

API No. 15-
Spot Description:
Sec. Twp. S. R.
GPS Location: Lat: Long:
Datum: NAD27 NAD83 WGS84
County: Elevation:
Lease Name: Well #:
Well Type: Oil Gas OG WSW Other:
SWD Permit #: ENHR Permit #:
Gas Storage Permit #:
Spud Date: Date Shut-In:

Table with 7 columns: Conductor, Surface, Production, Intermediate, Liner, Tubing. Rows include Size, Setting Depth, Amount of Cement, Top of Cement, Bottom of Cement.

Casing Fluid Level from Surface: How Determined? Date:
Casing Squeeze(s): to w / sacks of cement, to w / sacks of cement. Date:
Do you have a valid Oil & Gas Lease? Yes No
Depth and Type: Junk in Hole at Tools in Hole at Casing Leaks: Yes No Depth of casing leak(s):
Type Completion: ALT. I ALT. II Depth of: DV Tool: w / sacks of cement Port Collar: w / sack of cement
Packer Type: Size: Inch Set at: Feet
Total Depth: Plug Back Depth: Plug Back Method:

Geological Data:

Table with 4 columns: Formation Name, Formation Top, Formation Base, Completion Information. Rows 1 and 2.

UNDER PENALTY OF PERJURY I HEREBY ATTEST THAT THE INFORMATION CONTAINED HEREIN IS TRUE AND CORRECT TO THE BEST OF MY KNOWLEDGE

Submitted Electronically

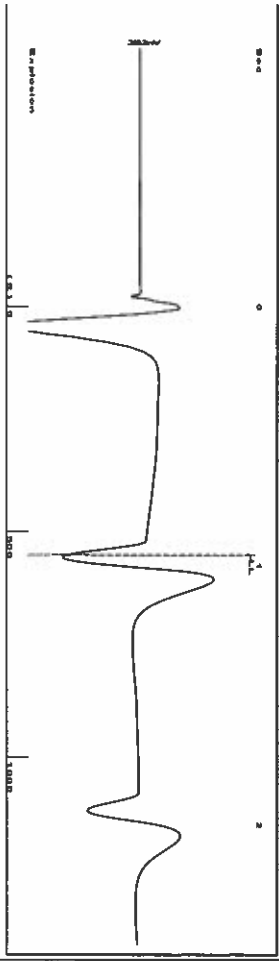
Do NOT Write in This Space - KCC USE ONLY
Date Tested: Results: Date Plugged: Date Repaired: Date Put Back in Service:
Review Completed by: Comments:
TA Approved: Yes Denied Date:

Mail to the Appropriate KCC Conservation Office:

Table with 3 columns: District Office, Address, Phone. Rows 1-4.

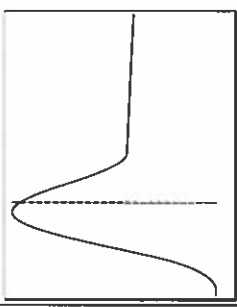
Shot @ 3000

Group: Hugoton TAD Well: JF Schroeder 3-16 (acquired on: 08/23/22 09:31:16)



Time 0.959 sec  
 Joints 17.3951 Jts  
 Depth 551.42 ft

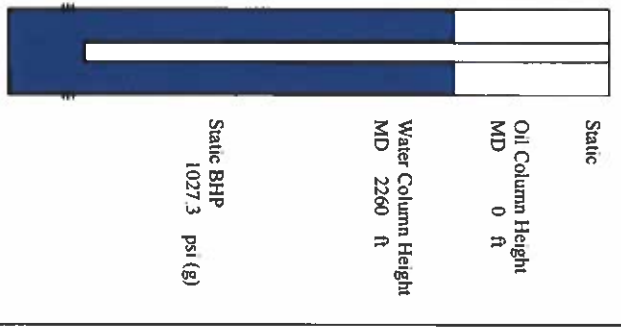
Liquid level calculated with  
 user supplied Acoustic Velocity  
 Acoustic Velocity 1150 ft/s



**Analysis Method: Acoustic Velocity**

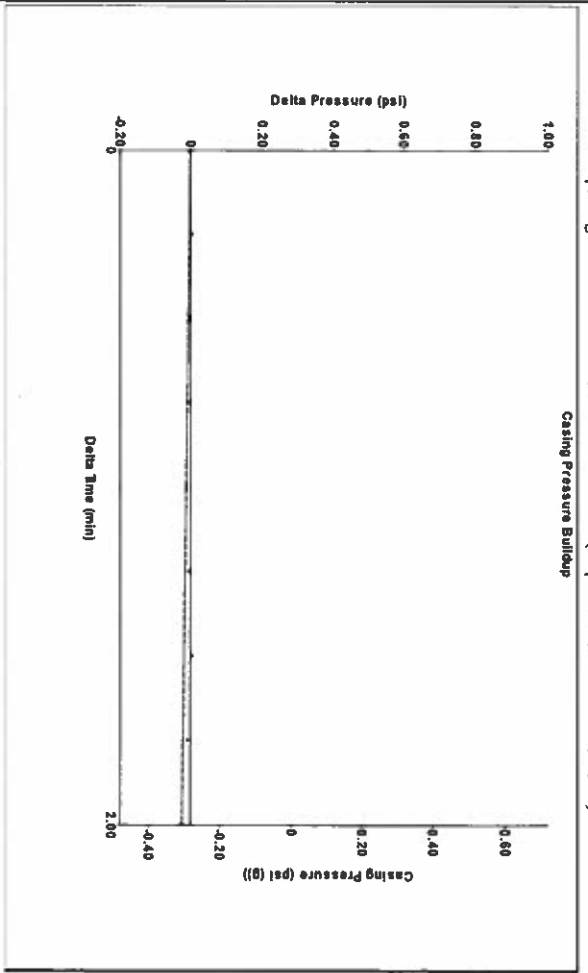
Group: Hugoton TAD Well: JF Schroeder 3-16 (acquired on: 08/23/22 09:31:16)

Production	Potential	Casing Pressure	Static
Current -*- BBL/D	-0.3 psi (g)		
Oil -*- BBL/D	Casing Pressure Buildup		
Water -*- BBL/D	-0.0 psi		Oil Column Height
Gas -*- Misc/D	2.00 min		MD 0 ft
IPR Method Vogel	Gas/Liquid Interface Pressure		
PBHP/SBHP -*-	-0.0 psi (g)		
Production Efficiency 0.0			
Oil 40 deg/API	Liquid Level Depth		Water Column Height
Water 1.05 Sp Gr H2O	551.42 ft		MD 2260 ft
Gas 0.85 Sp Gr AIR	Pump Intake Depth		
	2716.00 ft		
	Formation Depth		
	2811.00 ft		
Acoustic Velocity 1150 ft/s			



Acoustic Test

Group: Hugoton TAD Well: JF Schroeder 3-16 (acquired on: 08/23/22 09:31:16)



Change in Pressure -0.02 psi PT 10411  
 Change in Time 2.00 min Range 0 - ? psi

Group: Hugoton TAD Well: JF Schroeder 3-16 (acquired on: 08/23/22 09:31:16)

**Entered Acoustic Velocity for Liquid Level depth determination**

September 15, 2022

Katherine McClurkan  
Merit Energy Company, LLC  
13727 Noel Road, Suite 1200  
Dallas, TX 75240-7362

Re: Temporary Abandonment  
API 15-129-21397-00-00  
J F Schroeder (TBM) 16-3  
NW/4 Sec.16-35S-40W  
Morton County, Kansas

Dear Katherine McClurkan:

"Your temporary abandonment (TA) application for the well listed above has been approved. In accordance with K.A.R. 82-3-111 the TA status of this well will expire 09/15/2023.

- \* If you return this well to service or plug it, please notify the District Office.
- \* If you sell this well you are required to file a Transfer of Operator form, T-1.
- \* If the well will remain temporarily abandoned, you must submit a new TA application, CP-111, before 09/15/2023.

You may contact me at the number above if you have questions.

Very truly yours,

Michael Maier"